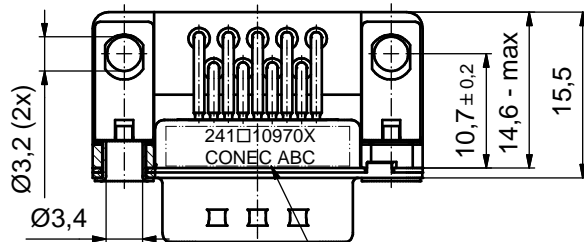
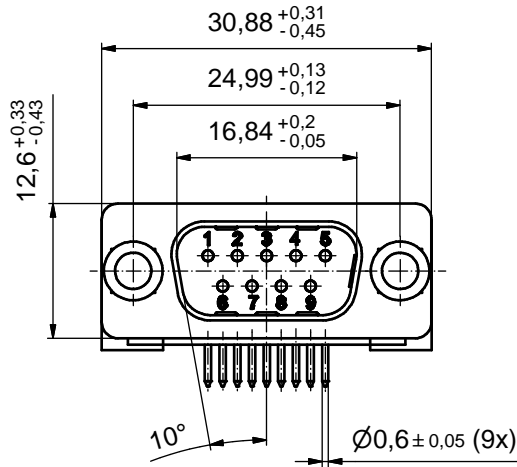
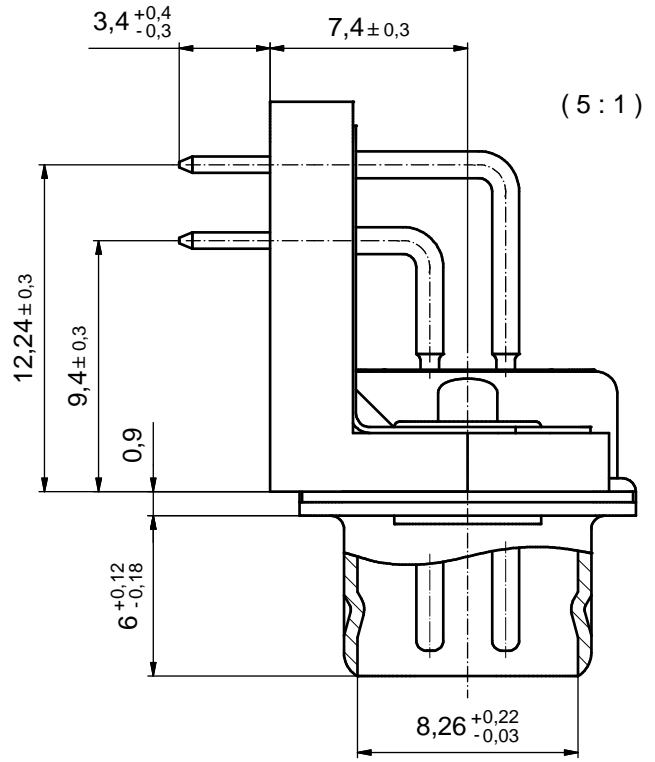
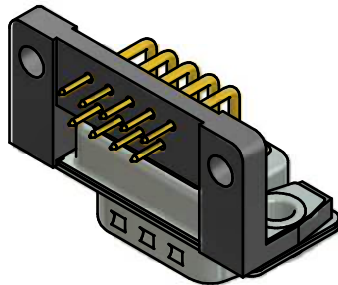


P.C.B. HOLE DRILLINGS (P.C.B. TOP SIDE)



SEE NOTE 10



NOTES:

1. FOR WAVESOLDERING (SOLDER BATH TEMPERATURE 260°C FOR 5 SEC. AND SOLDER PREHEAT 100°C FOR 30 SEC.)
2. METALSHELLS: STEEL; min. 315µin TIN over 40-80µin NICKEL
3. INSULATOR: HIGH TEMPERATURE PLASTIC UL 94 V-0, BLACK
4. CONTACTS: COPPER ALLOY, PLATING:
 - PLEASE ADD A for GOLD FLASH over NICKEL (PREFERRED TYPE)
 - PLEASE ADD B for 20µin HARD GOLD over min. 50µin NICKEL
 - PLEASE ADD C for 30µin HARD GOLD over min. 50µin NICKEL
- CONTACT TAILS PRETINNED
5. MOUNTING BRACKET: HIGH TEMPERATURE PLASTIC UL 94 V-0; BLACK
6. RIVETED INSERTS: COPPER ALLOY; min. 200µin TIN over 80µin NICKEL
7. GROUNDING BRACKETS: COPPER ALLOY; TIN PLATED
8. CAPACITANCE: 370pF±20%
9. DIELECTRIC WITHSTANDING VOLTAGE: 424 VDC
10. CONNECTOR IS PART MARKED: 241□10970X CONEC ABC (see note 3)

Directive 2002/95/EC RoHS compliant

THIS DRAWING MAY NOT BE COPIED OR REPRODUCED IN ANY WAY, AND MAY NOT BE PASSED ON TO A THIRD PARTY WITHOUT WRITTEN PERMISSION. OWNERSHIP AND COPYRIGHT OF CONEC GmbH DO NOT ALTER CAD DRAWING BY HAND	tolerance		dim. in mm	scale: 2:1 (5:1)		
				material: SEE NOTES		
	drawn	04.09.2014	Heinrich	title: D-SUB FILTER MALE 90° 9pos. SOLDER PIN ANGLED 0.370inch through hole, mounting bracket, grounding bracket dwg no: DIN-A3		
	appd.	04.09.2014	Lehmenkühler			
norm						
d-old						
a	Original				sh: 1	
rev.	description	date			name	part no: 241□10970X (see note 3)