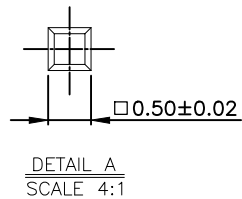
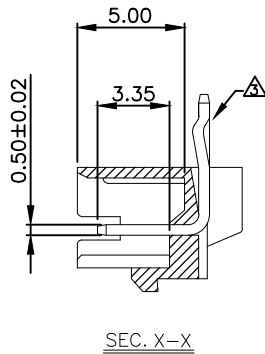
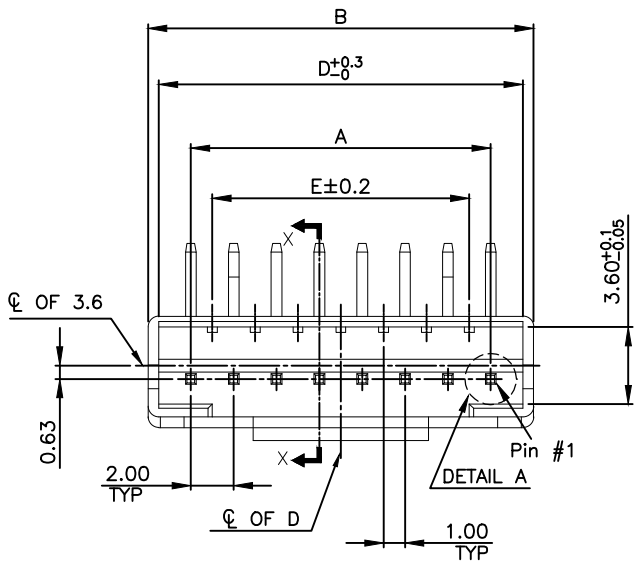


THIS DRAWING IS UNPUBLISHED. RELEASED FOR PUBLICATION
 © COPYRIGHT - BY - ALL RIGHTS RESERVED.

LOC	DIST	REVISIONS					
DW	-	P	LTR	DESCRIPTION	DATE	DWN	APVD
			A3	ECR-20-004159		07MAY2020	T.Q

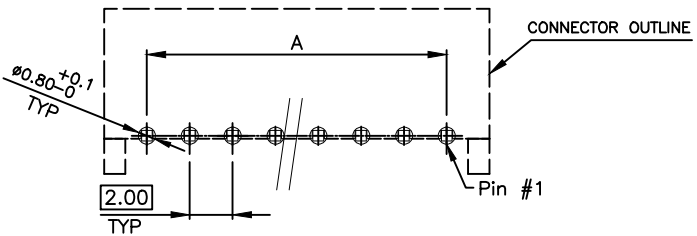
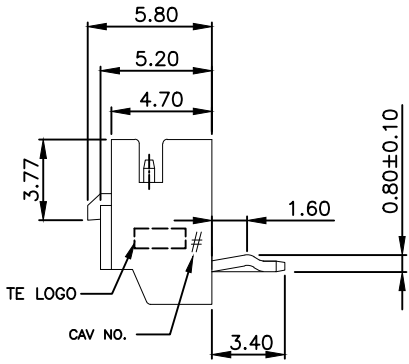
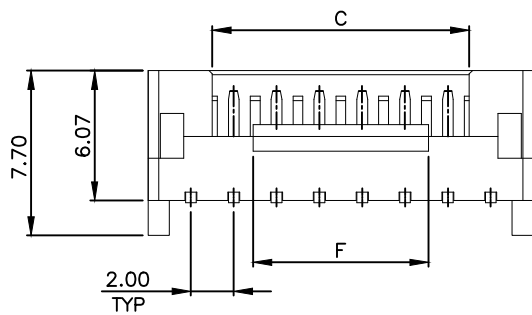
NOTE:

- MATERIAL:
HSG: NYLON 66, UL 94V-0. COLOR:NATURAL
CONTACTS: BRONZE.
- FINISH:
CONTACTS: 2.032 μ m [80 μ "] MIN. BRIGHT-TIN ON OVER ALL
0.762 μ m [30 μ "] MIN. NICKEL UNDERPLATED
- CONTACT SOLDER TAIL KINK DIRECTION (BOARD LOCK) SEE TABLE
- NON ACCUMULATIVE TOLERANCE
- WAVE SOLDER SPECIFICATION REFER TO 108-57788.



POS	1	2	3	4	5	6	7	8	9	10	11	12	13	14	15	16
2P	●	●														
3P	●	○	●													
4P	○	○	○	○												
5P	●	○	○	○	○	○										
6P	○	○	○	○	○	○	○									
7P	○	○	○	○	○	○	○	○								
8P	○	○	○	○	○	○	○	○	○							
9P	○	○	○	○	○	○	○	○	○	○						
10P	○	○	○	○	○	○	○	○	○	○	○					
11P	○	○	○	○	○	○	○	○	○	○	○	○				
12P	○	○	○	○	○	○	○	○	○	○	○	○	○			
13P	○	○	○	○	○	○	○	○	○	○	○	○	○	○		
14P	○	○	○	○	○	○	○	○	○	○	○	○	○	○	○	
15P	○	○	○	○	○	○	○	○	○	○	○	○	○	○	○	○
16P	○	○	○	○	○	○	○	○	○	○	○	○	○	○	○	○

● WITH LOCK KINK
○ WITHOUT LOCK KINK



RECOMMENDER PCB LAYOUT
 TOLERANCE: ±0.05 (TOP VIEW)
 (PCB THK=1.0~1.6mm)

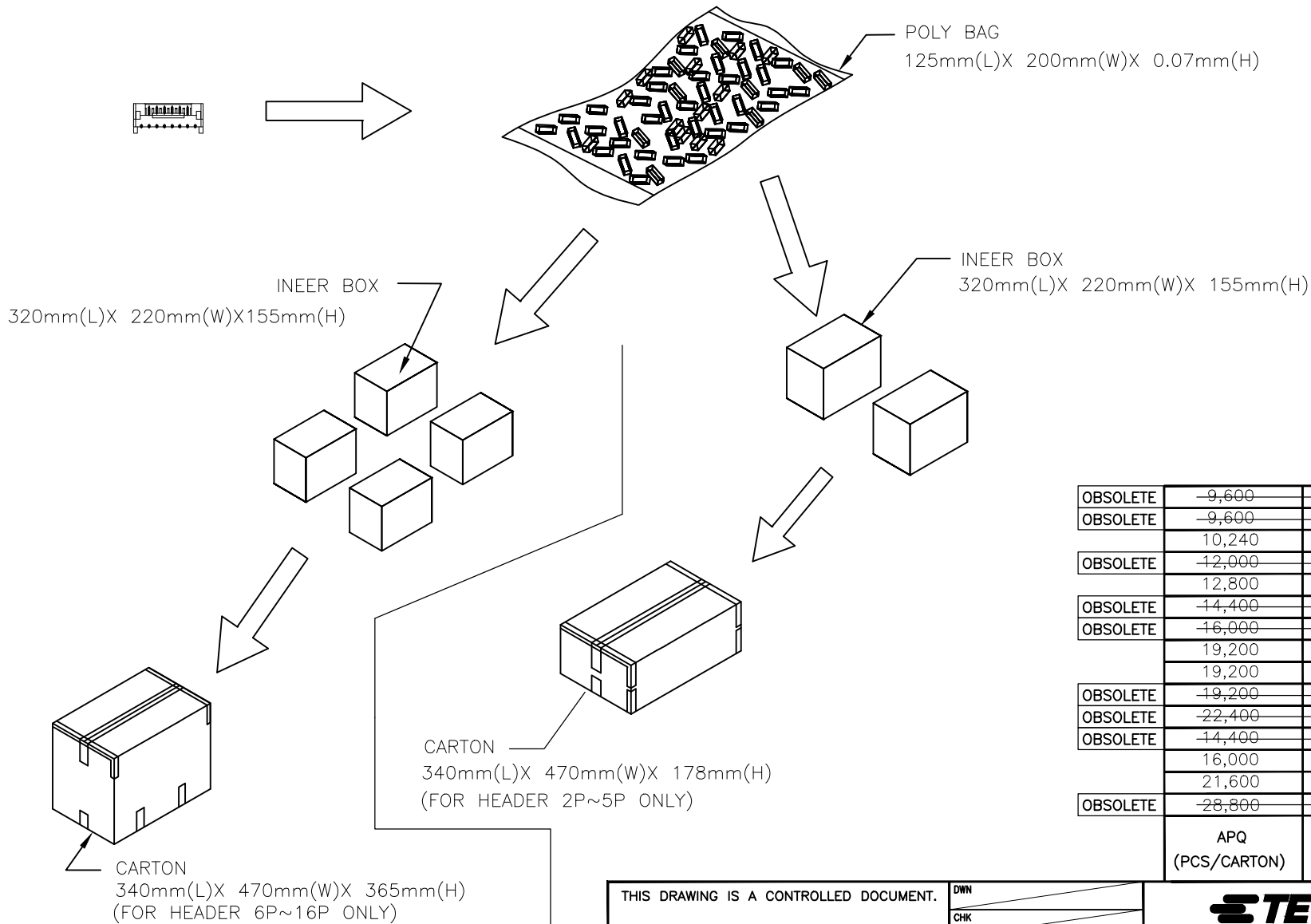
OBSOLETE	0.835	8.2	28.0	33.0	28.0±0.2	34.0	30.0	16P	1-2041145-6
OBSOLETE	0.785	8.2	26.0	31.0	26.0±0.2	32.0	28.0	15P	1-2041145-5
	0.735	8.2	24.0	29.0	24.0±0.2	30.0	26.0	14P	1-2041145-4
OBSOLETE	0.685	8.2	22.0	27.0	22.0±0.2	28.0	24.0	13P	1-2041145-3
	0.635	8.2	20.0	25.0	20.0±0.2	26.0	22.0	12P	1-2041145-2
OBSOLETE	0.585	8.2	18.0	23.0	18.0±0.2	24.0	20.0	11P	1-2041145-1
OBSOLETE	0.54	8.2	16.0	21.0	16.0±0.2	22.0	18.0	10P	1-2041145-0
	0.49	8.2	14.0	19.0	14.0±0.2	20.0	16.0	9P	2041145-9
	0.44	8.2	12.0	17.0	12.0±0.2	18.0	14.0	8P	2041145-8
OBSOLETE	0.40	8.2	10.0	15.0	10.0±0.2	16.0	12.0	7P	2041145-7
OBSOLETE	0.37	4.0	8.0	13.0	8.0±0.2	14.0	10.0	6P	2041145-6
OBSOLETE	0.32	4.0	6.0	11.0	6.0±0.2	12.0	8.0	5P	2041145-5
	0.26	4.0	4.0	9.0	4.0±0.2	10.0	6.0	4P	2041145-4
	0.20	2.0	2.0	7.0	2.0 ^{+0.2} _{-0.08}	8.0	4.0	3P	2041145-3
OBSOLETE	0.14	2.0	/	5.0	2.0	6.0	2.0	2P	2041145-2

THIS DRAWING IS A CONTROLLED DOCUMENT.

DIMENSIONS: MM	TOLERANCES UNLESS OTHERWISE SPECIFIED:	DWN J. LAI 300CT2009	TE Connectivity HPI 2.0mm HEADER CONNECTOR, R/A, DIP TYPE
	0 PLC ± -	CHK S. CHIEN 300CT2009	
	1 PLC ± 0.3	APVD W. KODAMA 300CT2009	
	2 PLC ± 0.2	NAME	
	3 PLC ± 0.15	PRODUCT SPEC	108-57788
	4 PLC ± -	APPLICATION SPEC	
	ANGLES ± 3'	WEIGHT SEE TABLE	SIZE CAGE CODE DRAWING NO RESTRICTED TO
MATERIAL SEE NOTE	FINISH SEE NOTE	CUSTOMER DRAWING	A300779 C-2041145
		SCALE	SHEET 1 of 2 REV A3

THIS DRAWING IS UNPUBLISHED. RELEASED FOR PUBLICATION
 © COPYRIGHT BY ALL RIGHTS RESERVED.

LOC DW	DIST	REVISIONS		
P	LTR	DESCRIPTION	DATE	DWN APVD
		SEE SHEET 1.		



OBSOLETE	-9,600	160	16P	1-2041145-6
OBSOLETE	-9,600	160	15P	1-2041145-5
	10,240	160	14P	1-2041145-4
OBSOLETE	-12,000	200	13P	1-2041145-3
	12,800	200	12P	1-2041145-2
OBSOLETE	-14,400	200	11P	1-2041145-1
OBSOLETE	-16,000	250	10P	1-2041145-0
	19,200	300	9P	2041145-9
	19,200	300	8P	2041145-8
OBSOLETE	-19,200	300	7P	2041145-7
OBSOLETE	-22,400	350	6P	2041145-6
OBSOLETE	-14,400	450	5P	2041145-5
	16,000	500	4P	2041145-4
	21,600	600	3P	2041145-3
OBSOLETE	-28,800	800	2P	2041145-2
	APQ (PCS/CARTON)	PPQ (PCS/BAG)	CIRCUITS	PART NUMBER

THIS DRAWING IS A CONTROLLED DOCUMENT.		DWN	TE TE Connectivity	
DIMENSIONS: MM		CHK		
TOLERANCES UNLESS OTHERWISE SPECIFIED:		APVD	NAME HPI 2.0mm HEADER CONNECTOR, R/A, DIP TYPE	
0 PLC ± -		PRODUCT SPEC		
1 PLC ± -		APPLICATION SPEC	SIZE A3	
2 PLC ± -		WEIGHT		
3 PLC ± -		CUSTOMER DRAWING	CAGE CODE 00779	DRAWING NO C=2041145
4 PLC ± -			RESTRICTED TO	
ANGLES ± -			SCALE	
FINISH			SHEET 2 OF 2	
MATERIAL			REV A3	