

DRAWING MADE IN THIRD ANGLE PROJECTION

3

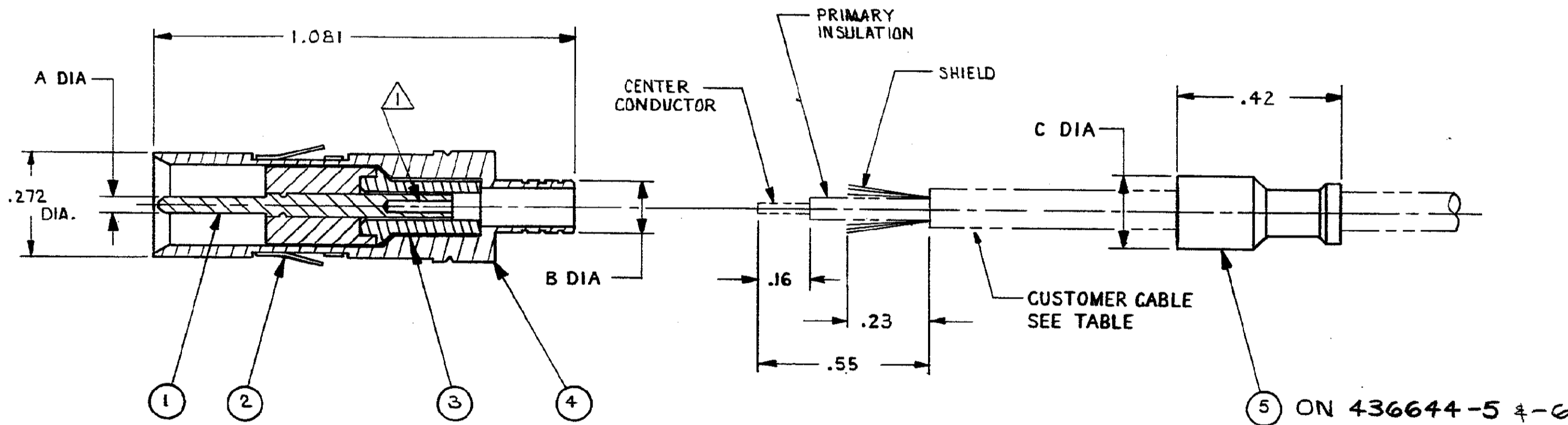
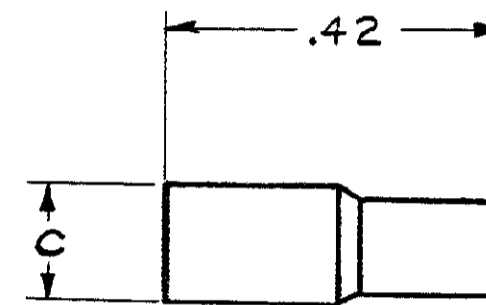
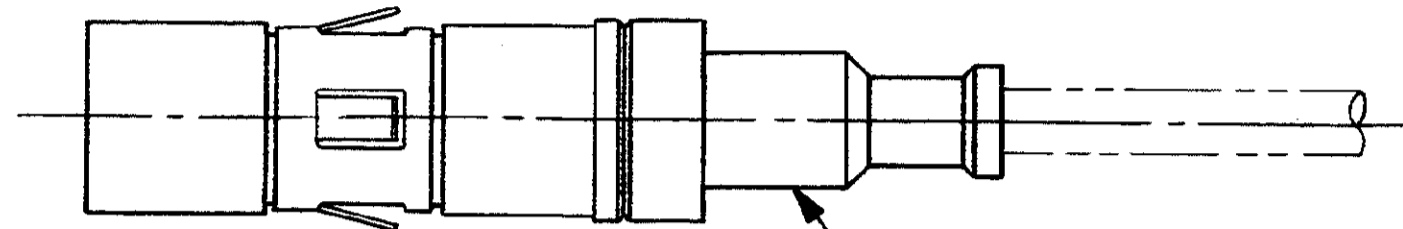
2

1

4582 LOC DF PIST

THIS DRAWING IS UNPUBLISHED. RELEASED FOR PUBLICATION, 19
 © COPYRIGHT 19 BY AMP INCORPORATED, HARRISBURG, PA. ALL INTERNATIONAL RIGHTS RESERVED. AMP PRODUCTS MAY BE COVERED BY U.S. AND FOREIGN PATENTS AND/OR PATENTS PENDING.

| P | F | ZONE | LTR | DESCRIPTION | DATE | APPROVED |
|---|---|------|-----|---|-------------|----------|
| | | | Q | RELEASED TO CUSTOMER | 12-22-83 | RS |
| | | | A | REVISED PIN SLEEVE PICTURE | 2-6-84 | CO |
| ✓ | ✓ | | B | WAS 83-17745-2 SH2 NPR S2677 | 3-5-84 | DJH |
| ✓ | ✓ | | G | 1.081 WAS 1.075, ECN S2783 | 7-30-84 | RS |
| ✓ | ✓ | | D | ADDED CRIMPER NO'S, REV'D CABLE PICT, ECN S2828 | 9-20-84 | JM |
| ✓ | ✓ | | E | REVISED ECN S3099 | 6-12-85 | RV |
| | | | F | REVISED ECN S3296 | 2-11-86 | RV |
| | | | | ADDED -5 NPR S3297 | 2/14/86 | RV |
| | | | | ADDED -2, -3 & -4 (PREASSIGNED) | | |
| ✓ | ✓ | | G | REVISED ECN S4056 | 6-18-87 | CJZ |
| ✓ | ✓ | | H | REV PER ECN DF-0350 | 2-2-88 | NR |
| ✓ | ✓ | | J | ADDED -6 | 3-30-88 | BBM |
| ✓ | ✓ | | K | REV PER ECN DF-1223 | T.W. 1-9-89 | THK |



| | | | | | | | | | | |
|--------------------|-----|------|-----------|----------------------|-----------|----------|----------|----------|---------------------|--------------|
| 58343-1 | .22 | .183 | .039-.040 | RG-180 | 328664 | 436643-3 | 436641-2 | 436585-4 | 436642-1 | 436644-6 |
| 58343-1 | .22 | .183 | .029-.030 | RG-180 | 328664 | 436643-3 | 436641-2 | 436585-4 | 436642-2 | 436644-5 |
| — | .17 | .110 | .029-.030 | RAYCHEM 9530H1014-9X | — | — | — | — | — | —4 |
| — | .17 | .110 | .039-.040 | RG-142 | — | — | — | — | — | —3 |
| 58251-1 | .17 | .110 | .029-.030 | RG-179 | 328666 | 436643-1 | 436641-1 | 436585-4 | 436642-2 | —2 |
| 58251-1 | .17 | .110 | .039-.040 | RG 174/U, 188, 316 | 328666 | 436643-1 | 436641-1 | 436585-4 | 436642-1 | 436644-1 |
| FERRULE CRIMP TOOL | C | B | A | WIRE TYPE | ⑤ FERRULE | ④ BARREL | ③ SLEEVE | ② SPRING | ① PIN & SLEEVE ASSY | KIT PART NO. |

- ① CRIMP CENTER CONDUCTOR WITH HAND TOOL M309, WITH DANIELS POSITIONER TP735.
- ② CRIMP BRAID BETWEEN BARREL AND FERRULE WITH TOOL SPECIFIED IN TABLE.
- 3. REFER TO IS 6911 FOR COMPLETE ASSY PROCEDURE.

| | | | | | |
|---|--------------------------|-------------------------|--|--------------|-----------------|
| UNLESS OTHERWISE SPECIFIED DIMENSIONS ARE IN INCHES. TOLERANCES ON: DECIMALS ±.02 ANGLES — | CONTRACT NO | | AMP AMP INCORPORATED Harrisburg, Pa. 17105 | | |
| | MATERIAL | DR R. Stone 12-22-83 | | | |
| FINISH | CHK R. Stone 12-28-83 | APPD 12-30-83 | APPD | DSGN APPD | OTHER APPD |
| | SIZE C | FSCM NO 00779 | DRAWING NO 436644 | SCALE 4:1 | SHEET 1 OF 1 |