



# Inductive Position Sensor Evaluation Kits

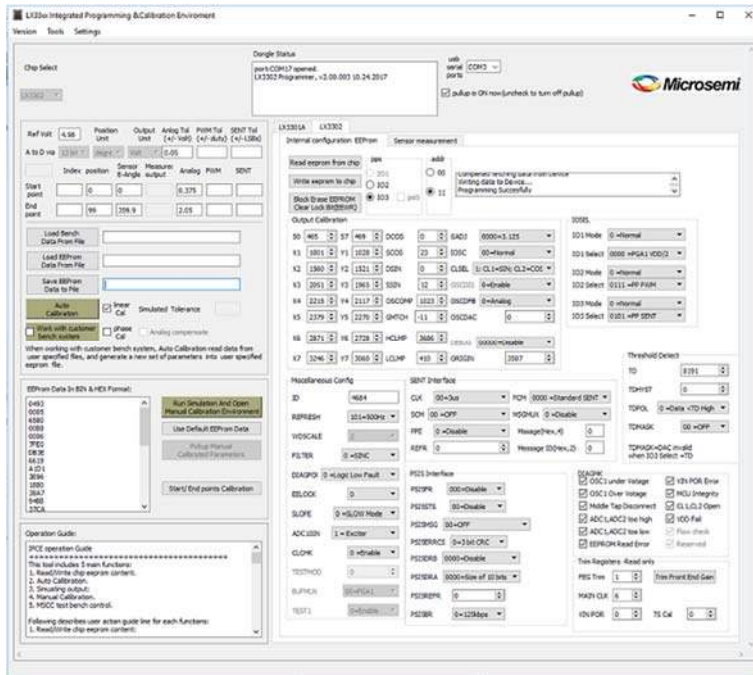
Both LX3301A and LX3302A currently have a linear position sensor evaluation kit and a rotary position sensor evaluation kit available. An evaluation kit includes a corresponding evaluation board, a programmer, a GUI, and applicable cables. There are also separate evaluation boards and programmers available for order upon request.

The programmer provides simple interface between the evaluation board and the laptop, together with the Integrated Programming and Calibration Environment (IPCE) GUI, it allows data capturing, measuring and auto calibration of the device. Some key features of the IPCE are

- Simplified Sensor System Calibration and Testing
- Programs EEPROM
- Simulates Position Output
- Auto Calibration
- Stand Alone TCP/IP Addressable Software for Production



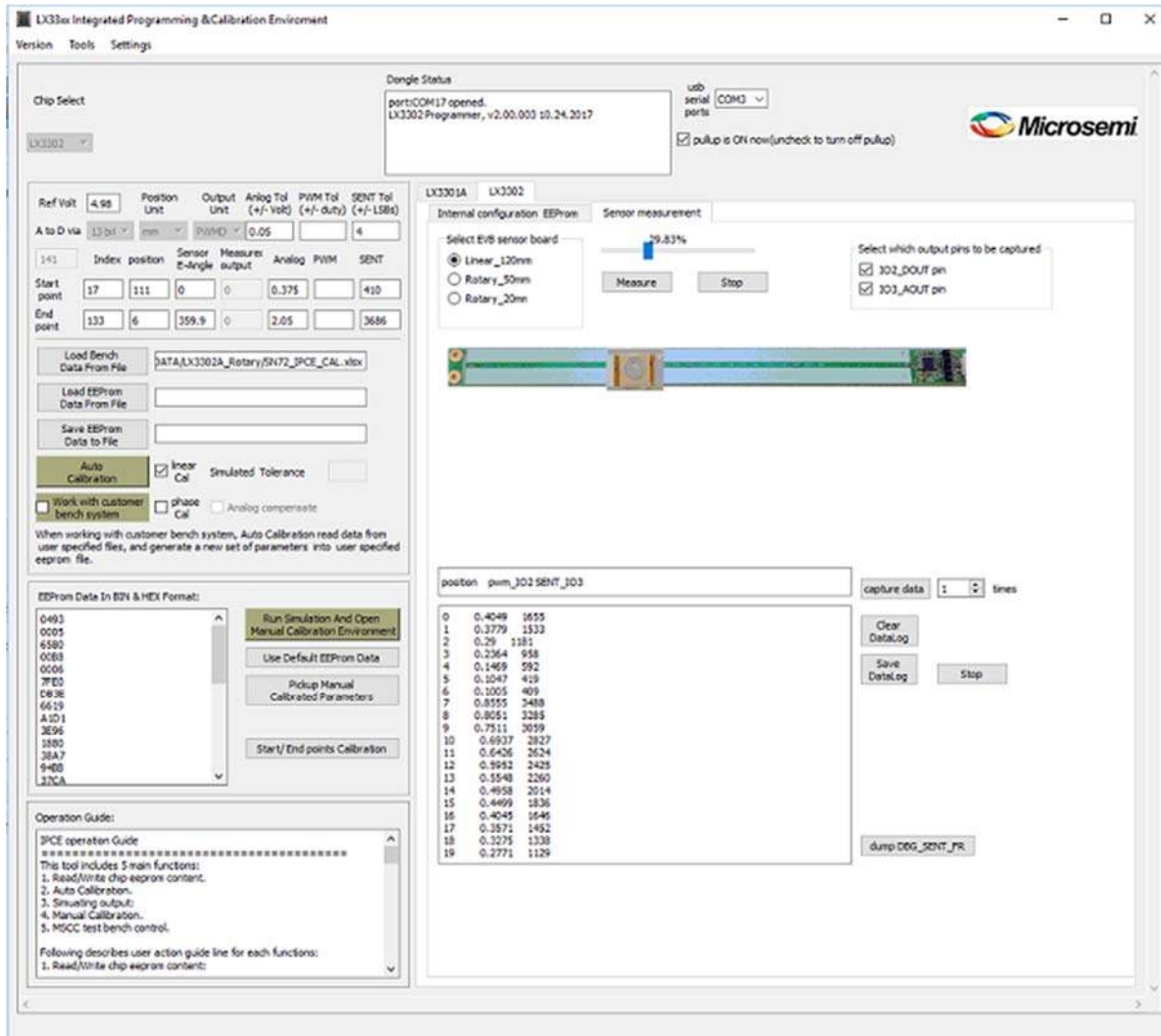
LXM9518 Programmer



Integrated Programming and Calibration Environment (IPCE)

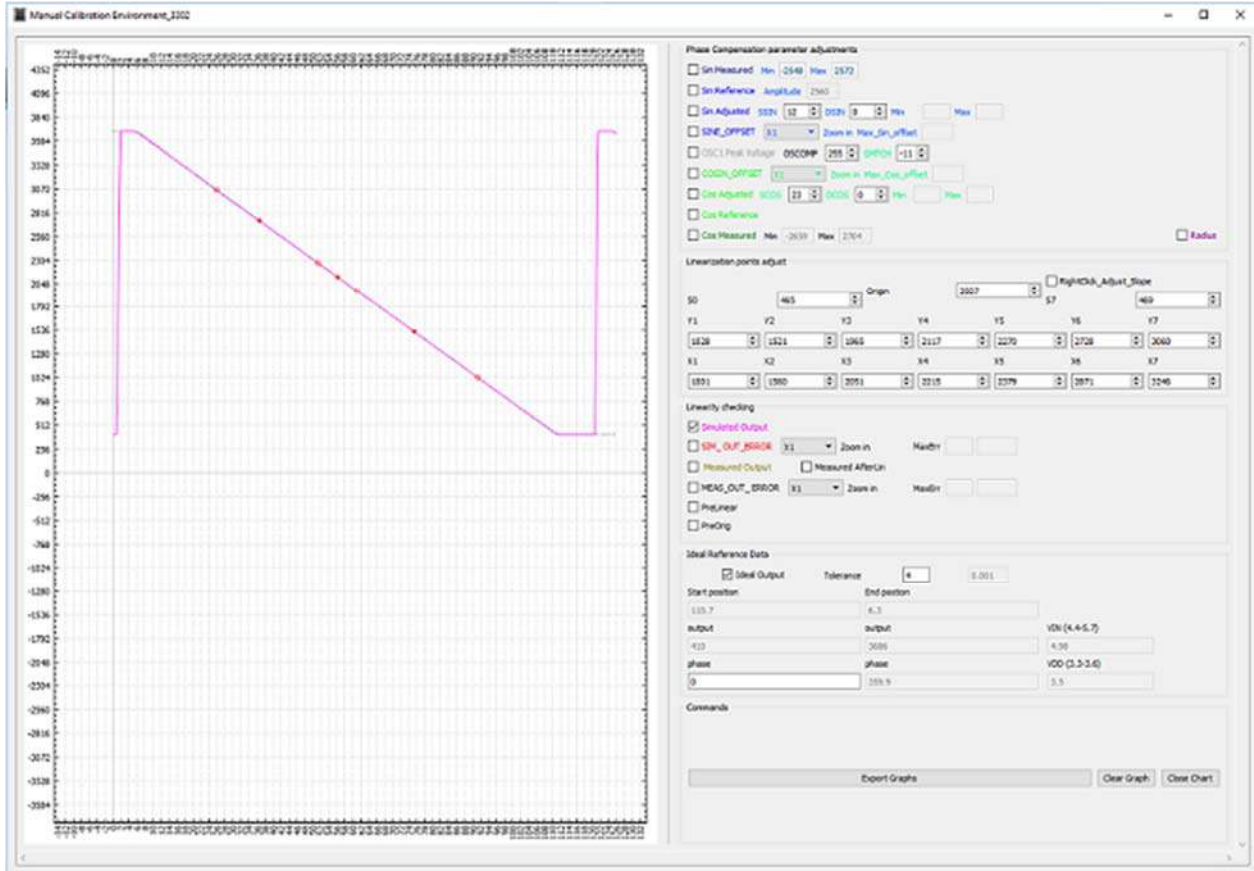
## IPCE Measurement Window, Provides Instant Data Capturing Function

The IPCE, together with the programmer, would allow instant data capturing either by manually click on the "capture data" button, or automatically through TCP/IP protocol. All data captured could be easily saved into an excel file by using the "Save Datalog" button.



## IPCE Auto-Calibration Simulation Window, Provides Optimal Calibration of the Sensor with a Single Click

The IPCE could simulate any collected data by loading up the data file through the "Load Bench Data From File" function, after loading the data, click on "Run Simulation And Open Manual Calibration Environment" button, the simulated result would show in the below window. IPCE provides a single click "Auto Calibration" function which would automatically find and present the optimal calibration result.



| Part Number  | Part Description                | Part Specification   |
|--------------|---------------------------------|--|
| LXE3301AR001 | LX3301A Rotary Evaluation Board | 18mm Diameter, 0.7mm Typical Airgap, 120 degree Rotary Position Sensor |
| LXE3301AL003 | LX3301A Linear Evaluation Board | 100mm Measurement Range, 2mm Typical Airgap Linear Position Sensor     |
| LXE3302AR001 | LX3302A Rotary Evaluation Board | 18mm Diameter, 0.7mm Typical Airgap, 120 degree Rotary Position Sensor |
| LXE3302AL002 | LX3302A Linear Evaluation Board | 100mm Measurement Range, 2mm Typical Airgap Linear Position Sensor     |

|              |                               |  |
|--------------|-------------------------------|--|
| LXK3301AR001 | LX3301A Rotary Evaluation Kit | 18mm Diameter, 0.7mm Typical Airgap, 120 degree Rotary Position Sensor with Programmer |
| LXK3301AL003 | LX3301A Linear Evaluation Kit | 100mm Measurement Range, 2mm Typical Airgap Linear Position Sensor with Programmer     |
| LXK3302AR001 | LX3302A Rotary Evaluation Kit | 18mm Diameter, 0.7mm Typical Airgap, 120 degree Rotary Position Sensor with Programmer |
| LXK3302AL002 | LX3302A Linear Evaluation Kit | 100mm Measurement Range, 2mm Typical Airgap Linear Position Sensor with Programmer     |
| LXM9518      | Programmer                    | Programmer   |