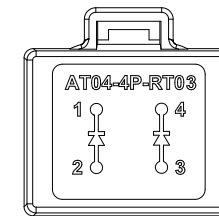
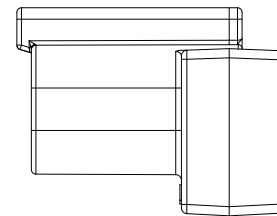
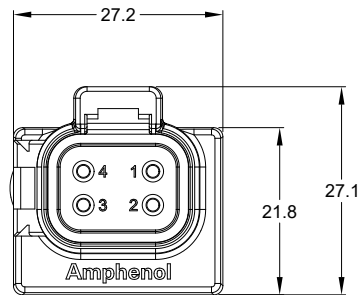
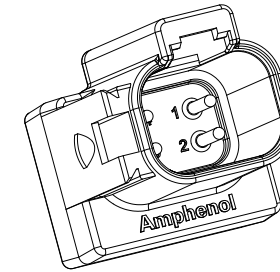
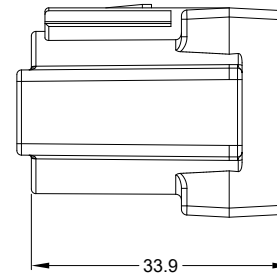


REVISIONS					
REV	ECO	DESCRIPTION	DATE	BY	APPR
A1	-	RELEASE	14MAY19	SULLEN	TOMMY
A2	-	UPDATE MOISTURE RESISTANCE	14MAY21	SULLEN	TOMMY

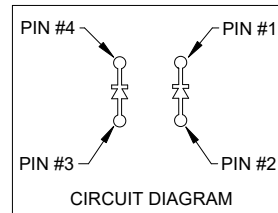


NOTES: UNLESS OTHERWISE SPECIFIED

- MATERIAL:  
HOUSING: THERMOPLASTIC, GRAY  
CONTACT: COPPER ALLOY  
CONTACT PLATING: NICKEL PLATED

- MODIFICATIONS: DIODE

- SPECIFICATIONS:
  - DIODE P/N: MUR460G
  - PEAK REVERSE VOLTAGE: 600.0 V MAX.
  - PEAK FORWARD VOLTAGE: 1.28 V MAX.
  - AVERAGE FORWARD CURRENT: 4.0 A MAX.
  - OPERATING TEMPERATURE: -55°C TO +125°C
  - MOISTURE RESISTANCE:  
IP68(1M OF WATER FOR A PERIOD OF 24 HOURS, MATED CONDITION)  
IP69K(MATED CONDITION)
  - MATING CYCLE DURABILITY: 100 CYCLES
  - RoHS COMPLIANT



- MATING PART: AT06-4S\*  
(\* = ALL MODIFICATIONS)

- ALL DIMENSIONS ARE FOR REFERENCE USE ONLY

AT04-4P-RT03		REF: DT04-4P-RT03		
PART NUMBER		DESCRIPTION		ITEM
QUANTITY		MATERIALS LIST		
UNLESS OTHERWISE SPECIFIED		SIGNATURES		
1) All dimensions are in metric(mm).		DATE		
2) Tolerances are as follows:		DRAWN: SULENZHANG 14MAY21		
1 PL DEC ±0.30		CHECKED: ORIONLI 15MAY21		
2 PL DEC ±0.15		ENGINEER:		
3 PL DEC ±0.08		APPROVAL: TOMMY.XIE 17MAY21		
3) Note reference =		CUSTOMER:		
MATERIAL SPECIFICATIONS:		THIS DRAWING IS SUPPLIED FOR INFORMATION ONLY. DESIGN FEATURES, SPECIFICATIONS AND PERFORMANCE DATA SHOWN HEREON ARE THE PROPERTY OF THE AMPHENOL CORPORATION. NO RIGHTS OF REPRODUCTION ARE IMPLIED. ALL DIMENSIONS ARE SUBJECT TO NORMAL MANUFACTURING VARIATIONS.		
PROCESS SPECIFICATIONS:		SCALE: NONE		
NEXT ASSY:		SIZE: B C- DWG NO: AT04-4P-RT03 REVISION: A2		
		SHEET 1 OF 1		

TITLE: RECEPTACLE 4PIN,TERMINATOR,AT SERIES  
DWG NO: AT04-4P-RT03  
REV: A2  
SH: 1  
OF: 1