

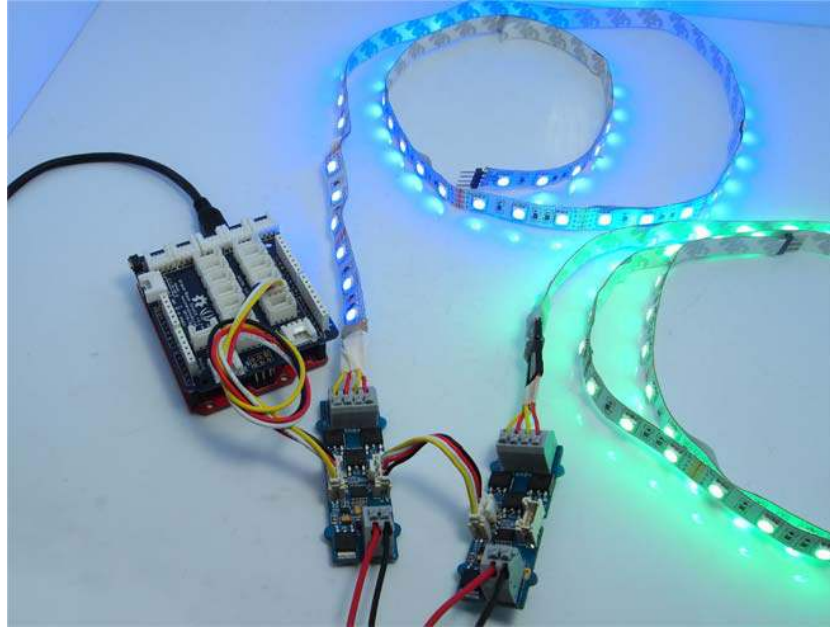
Grove - LED Strip Driver

SKU 105020002

The LED Strip Driver with 4-pin Grove interface provides easy connectivity to your standard Arduino device or Seeed Stalker. It can help you control the luminance of a single-color LED strip, as well as the color and the luminance of an RGB LED strip through Arduino or Seeeduino.

It has 2 terminals and 2 Grove interfaces. The power for the LED strip comes in through the 2-pin terminal. And the LED controlling voltages output through the 4-pin terminal. The 2 Grove interfaces are respectively screen-printed "IN" (for controlling data input) and "OUT" (for controlling data shared with the next strip driver).

It can drive an LED strip 1 to 2 meters long with 9 V, while 1 to 5 meters long with 12 V. The driver in conjunction with the colorful LED strips can add a wonderful effect to indoor or outdoor usages.



Features

- Grove compatible interface
- Can be cascaded for a larger display
- Best results achieved with LED strips 5 meters long or shorter
- Outputs PWM signals
- 256 gray-levels are adjustable via programming
- Arduino and MEGA compatible
- Screw Terminals (power input and control signal output interface)

For all Grove users (especially beginners), we provide you guidance PDF documents. Please download and read through [Preface - Getting Started](#) and [Introduction to Grove](#) before your using of the product.

Technical details

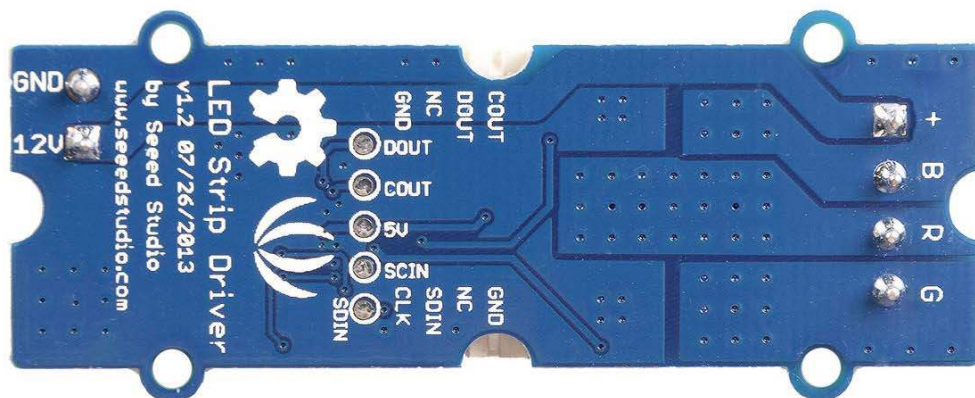
Dimensions	120mm x80mm x13mm
Weight	G.W 15g
Battery	Exclude

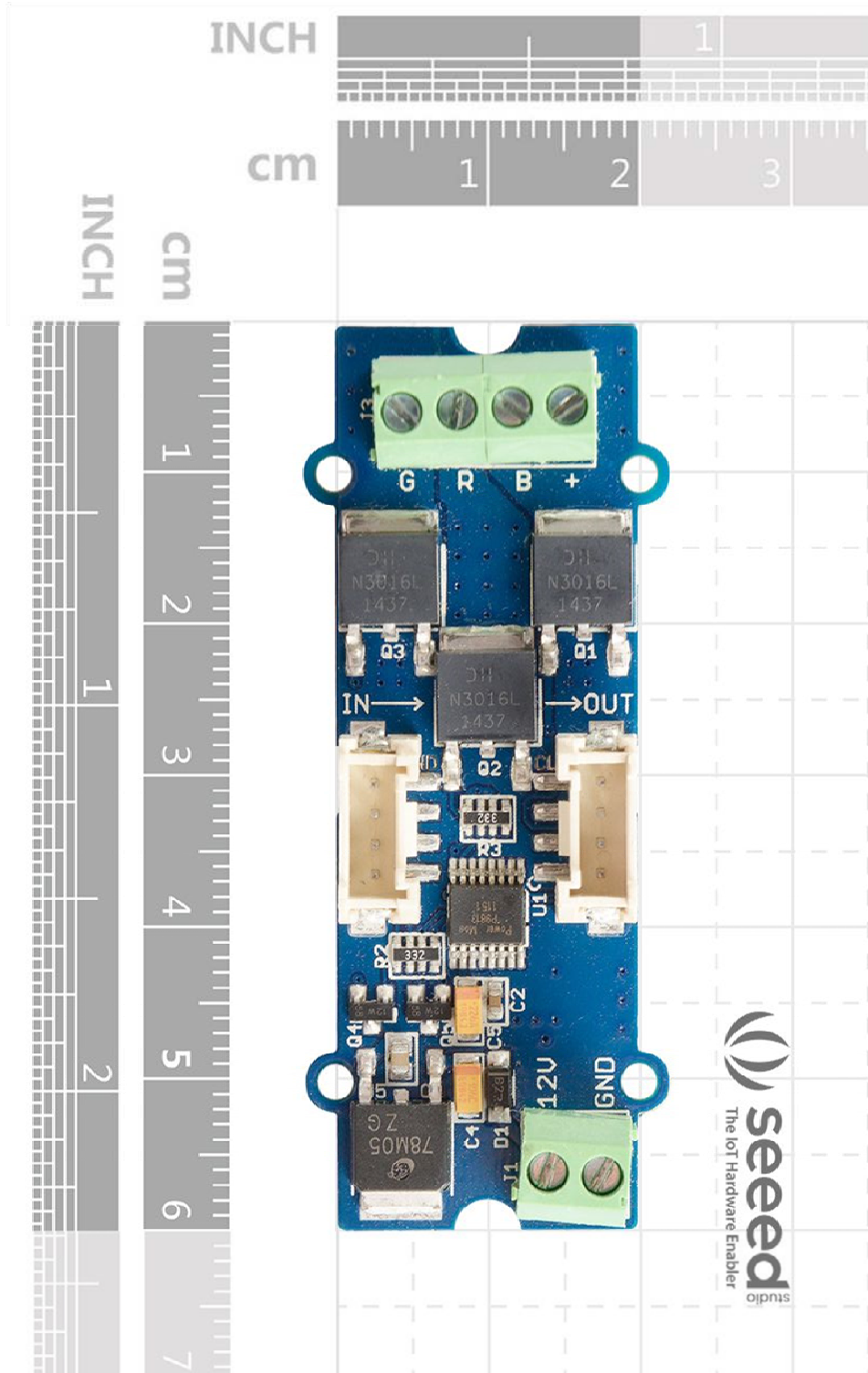
Part List

Grove - LED Strip Driver	1
--------------------------	---

ECCN/HTS

ECCN	EAR99
HSCODE	9405990000
USHSCODE	8531200040
UPC	841454108061
ROHS	1





<https://www.seedstudio.com/Grove-LED-Strip-Driver-p-1197.html/5-24-1>