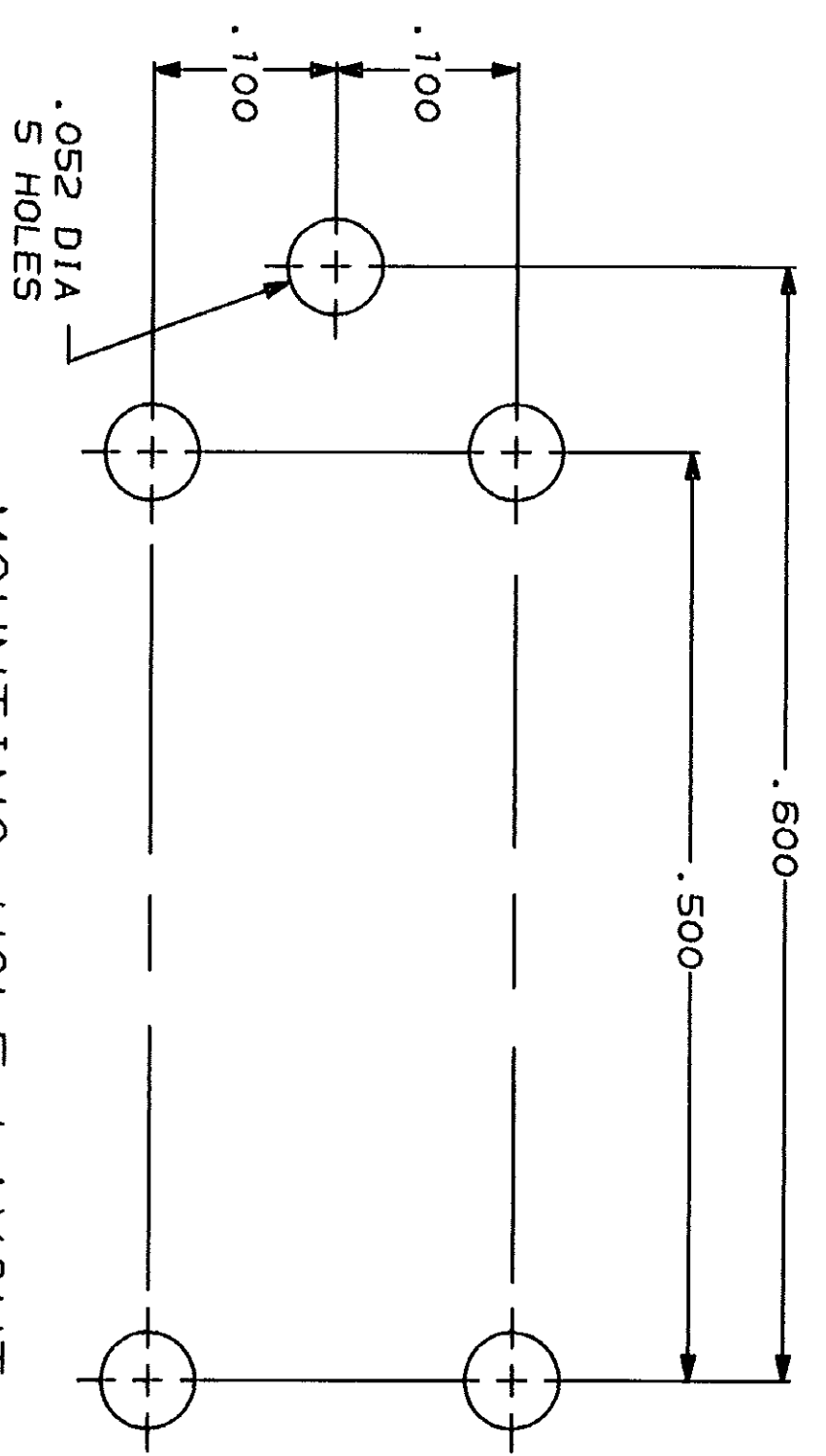
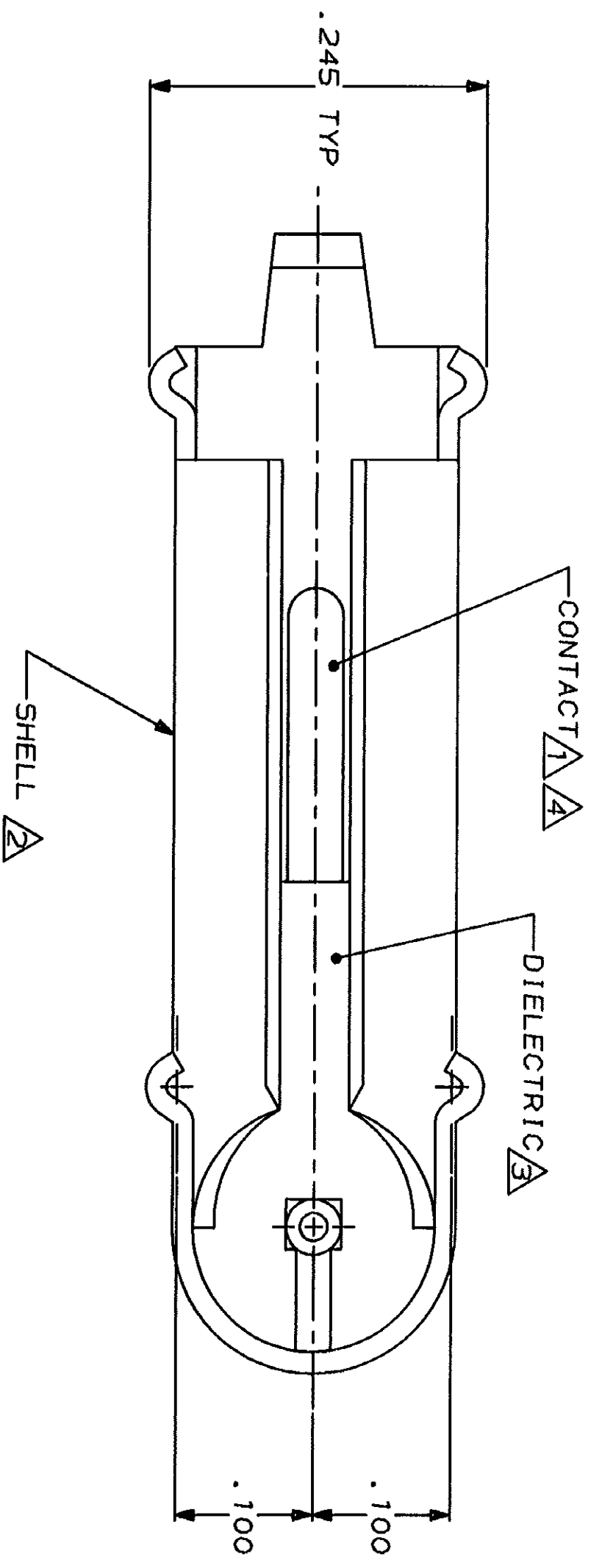
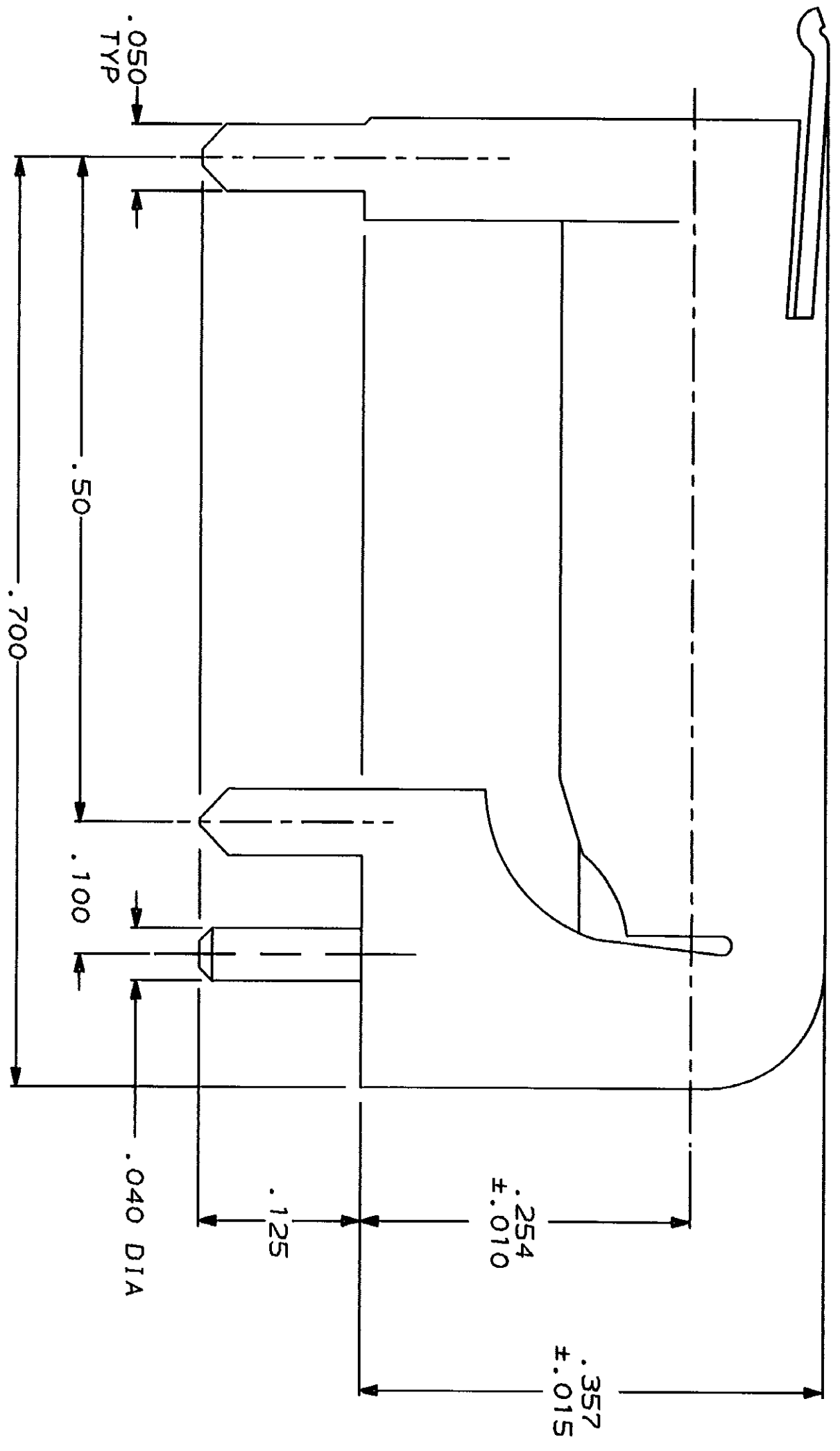


LOC	DIST	REV	ZONE	LTR	DESCRIPTION	DATE	APPD
AJ	16	P		Y	REVISED AND REDRAWN PER AJ-40408-28-89	02/02/89	JPD
		V		Z	OBS -4 PER AJ-3015		

- 1 BRASS PER QQ-B-626
- 2 BRASS PER MIL-C-50
- 3 POLYPROPYLENE, GENERAL PURPOSE.
- 4 GOLD PLATE PER MIL-G-45204, .000030 MIN THK.
- 5 TIN-LEAD PLATE PER ASTM-B-545
6. FOR USE WITH .062 MAX PRINTED CIRCUIT BOARD.
7. SEE I.S. 1204.



OBSOLETE	5	50084-4
	4	50084-1
SHELL FINISH		PART NUMBER

DR	J.L. GROFT	6-30-89	AMP INCORPORATED Harrisburg, Pa. 17105
CHK	S.J. MAGARO	9-28-89	
APPD	M. SNEED	1-16-90	
APPD	M. SNEED	1-16-90	
PRODUCT SPEC	108-12081		

FINISH	4	5	SIZE	FSCM NO	DRAWING NO
			C	00779	50084
WEIGHT			SCALE	10:1	SHEET
					1 OF 1

SOCKET, PCB, SPRING
 LATCH, MINIATURE

CUSTOMER DRAWING