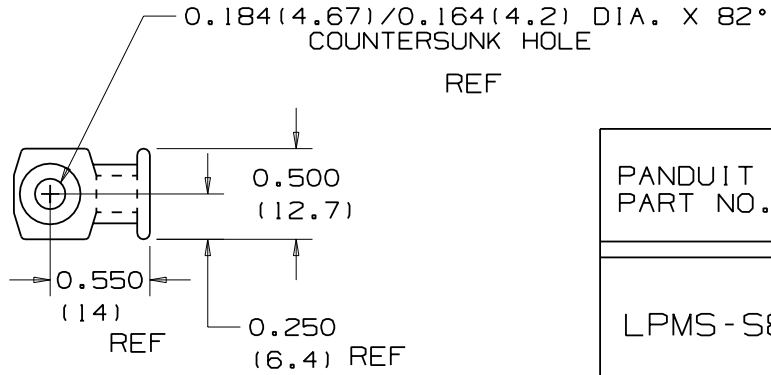
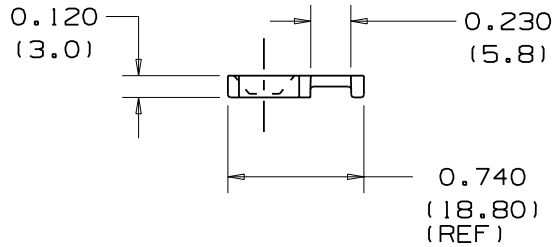


THIS COPY IS PROVIDED ON A RESTRICTED BASIS AND IS NOT TO BE USED IN ANY WAY DETRIMENTAL TO THE INTERESTS OF PANDUIT CORP.



PANDUIT PART NO. *	USE WITH ANY OF THESE CABLE TIE CROSS-SECTIONS	WEIGHT lbs/100pcs. (g)	SCREW SIZE
LPMS-S8	MINIATURE INTERMEDIATE STANDARD	0.102 (46.3)	#8 (M4)



NOTES:

- \* 1) SEE CURRENT PRICE SHEET FOR PART NUMBER SUFFIX DESIGNATION FOR PACKAGE SIZE AND COLOR.
- 2) MATERIAL:
  - \_ NATURAL NYLON 6/6
  - \_0 WEATHER RESISTANT BLACK NYLON 6/6
  - 20 HEAT STABILIZED BLACK NYLON 6/6

DIMENSIONS IN PARENTHESES ARE IN METRIC UNITS.

CAD FILENAME/LAYERS

G00239HG\_PB\_LPMS\_01

**PANDUIT** CORP. TINLEY PARK, ILLINOIS

LOW PROFILE MOUNT LPMS-S8

UNLESS OTHERWISE SPECIFIED, DIMENSIONAL TOLERANCES ARE:  
 (.X) ± ..... (.XXX) ± .020 (.5)  
 (.XX) ± ..... ANGLES ± .....

UNLESS OTHERWISE SPECIFIED, ALL DIMENSIONS ARE GIVEN IN INCHES, THIRD ANGLE PROJECTION.

DRAWN BY LGG  
 DATE 6-06-01  
 CHK'D

MAT'L: SEE NOTE 2

SCALE NONE  
 DRAWING NO. GBO239HG  
 DWG SIZE A

REV	DATE	BY	CHK	DESCRIPTION	ECN	R	CUST	SUP
I	2/1/06	JAD		ADDED NOTE 2, 0.74 (REF) WAS 0.75, 0.184/0.164 WAS 0.180/0.164	GBO239HG	I		
R	6-6-01	LGG		REVISED DRAWING FROM SS-5783-A-RV 3 TO NEW DRAWING NUMBER	GBO239HG	R		