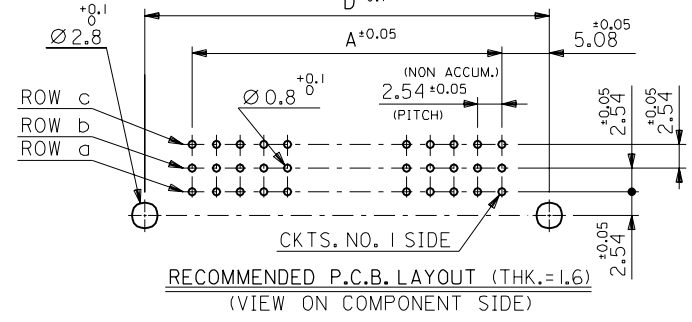
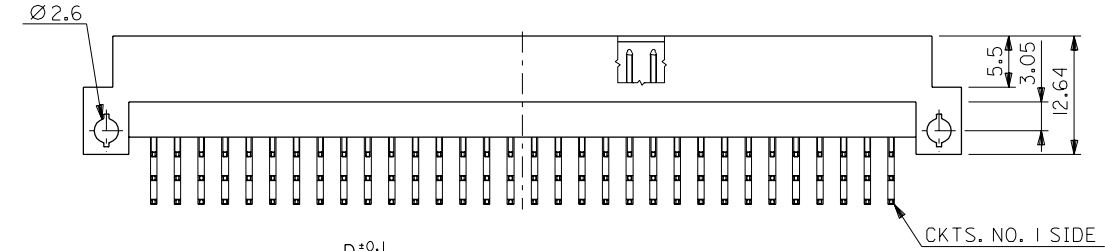
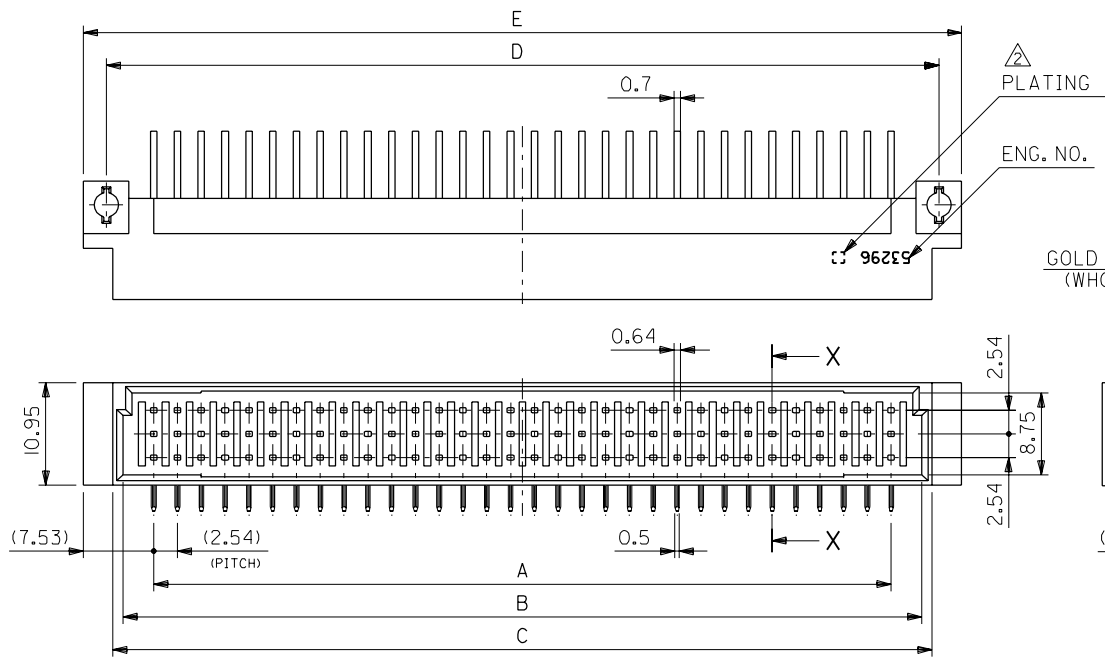


:MM DIMENSIONS IN METRIC DO NOT SCALE DRAWING

EDP NO.

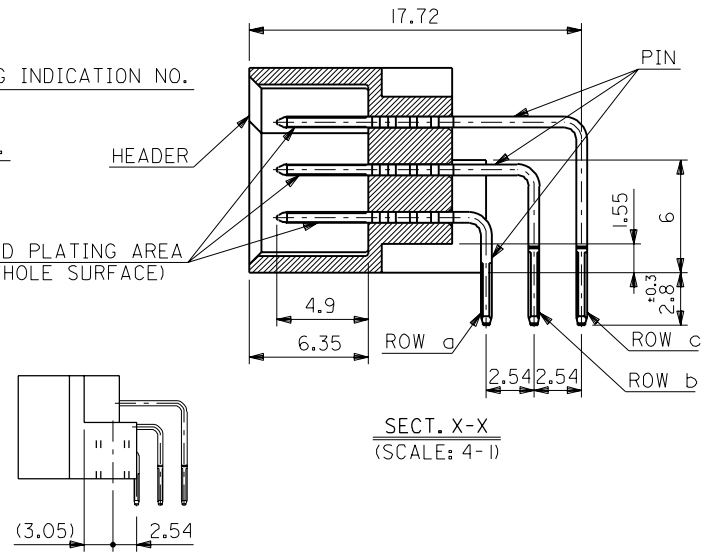
ENG. NO. SD-53296-****



PLATING INDICATION NO.

ENG. NO.

GOLD PLATING AREA
(WHOLE SURFACE)



NOTES: 1. MATERIAL
HEADER: GLASS FILLED P.B.T. (WHITE), UL94V-0
PIN: BRASS (t=0.58)

2. PLATING & PLATING INDICATION NUMBER

ENG. NO.	CONTACT AREA GOLD [μmMIN.]	SOLDER AREA TIN-LEAD [μmMIN.]	UNDER PLATE NICKEL [μmMIN.]	PLATING INDICATION NUMBER
53296-***3	0.76			3
53296-***2	0.5			2
53296-***1	0.3			1
53296-***0	0.1			0
		I.O	I.O	

3. MATE WITH : 52302, 52386, 52480, 52483 SERIES.

E	D	C	B	A	ENG. NO.	NO. OF CKTS.
93.8	88.9	87.5	85.3	78.74	53296-096*	96
53.16	48.26	46.86	44.66	38.1	53296-048*	48

角度 ANGLE	±3°				
30以上 OVER	+0.3	A	REVISED (J10138)	H.H	9/2/70
10以上 30未滿 UNDER	+0.25	O	RELEASED (J00981)	H.H	90/9/13
10未滿 UNDER	+0.2	記号 LTR	変更内容 REVISION RECORD	DR. CHK.	日付 DATE
一般公差 GENERAL TOLERANCES		REVISE ONLY ON CAD SYSTEM			

材料 MATERIAL	SEE NOTES	molex MOLEX-JAPAN CO.,LTD. 日本モレックス株式会社
仕上げ FINISH	SEE NOTES	
適用電線範囲 WIRE RANGE	—H—	EDP NO.
被覆外径 INS. RANGE	—H—	ENG. NO.
DRAWN BY '90/9/10 H.HIRAMOTO	CHK'D BY	SD-53296-****
APP'D BY	尺度 SCALE 2 - 1	REV A
TITLE 名称 2.54 B TO B CONN. RIGHT ANGLE HEADER ASS'Y (TRIPLE ROW)		

THIS DRAWING CONTAINS INFORMATION THAT IS PROPRIETARY TO MOLEX(JAPAN) AND SHOULD NOT BE USED WITHOUT WRITTEN PERMISSION
本図面は日本モレックス(株)の所有する情報を含むもので 当社の許可なく複製を禁止する。