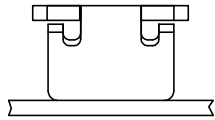
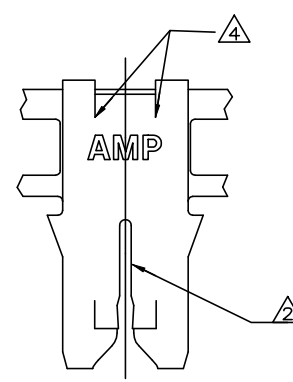
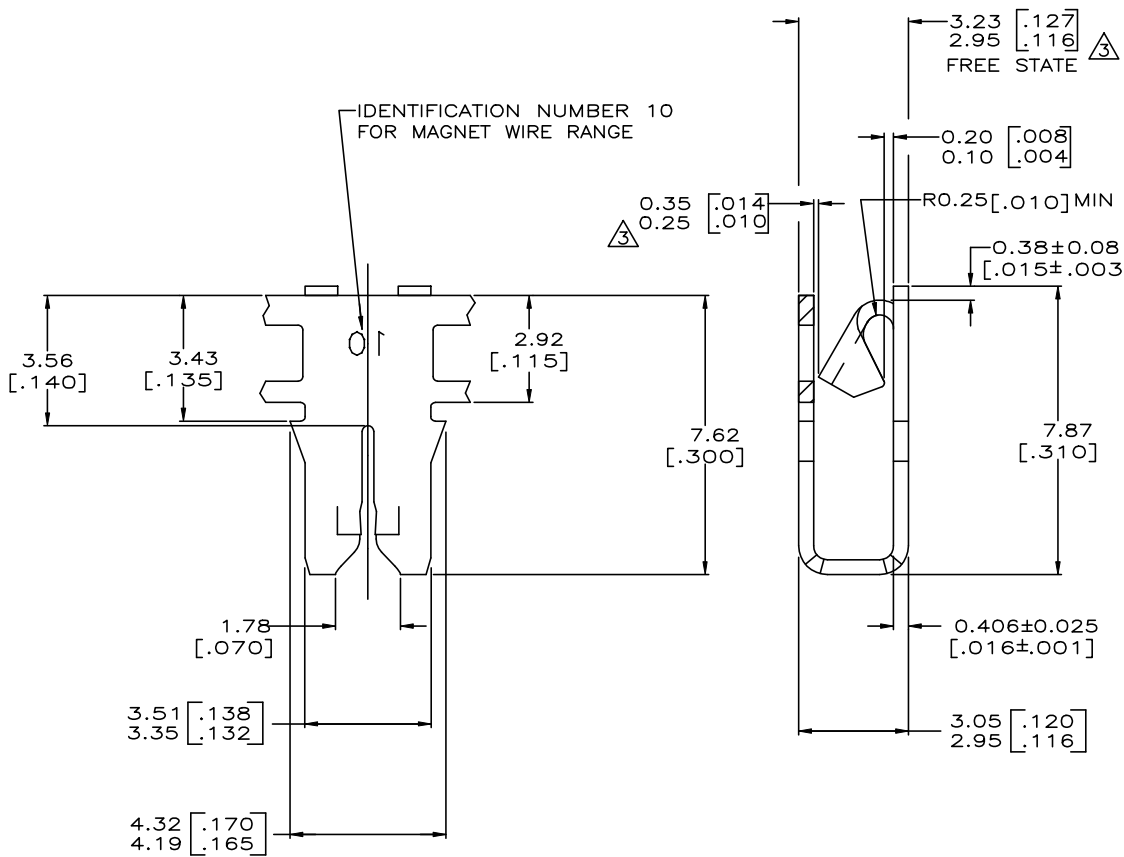


THIS DRAWING IS UNPUBLISHED. RELEASED FOR PUBLICATION
 © COPYRIGHT - TE Connectivity Ltd. ALL RIGHTS RESERVED.

REVISIONS					
P	LTR	DESCRIPTION	DATE	DWN	APVD
C1		ADDED ALUMINIUM WIRE RANGE	07NOV19	MB	PKS



- 1 CONTINUOUS STRIP ON REELS (NO SPLICES) WITH TERMINALS LOCATED ON 5.59±0.08 [.220 ± .003] CENTERS.
 - △ SLOT ACCEPTS SINGLE OR DOUBLE MAGNET WIRE OF THE SAME SIZE AND TYPE.
 COPPER RANGE 0.36-0.51mm [#27-#24] AWG
 ALUMINIUM RANGE 0.51-0.64mm [#24-#22] AWG
 ALUMINIUM WIRE RANGE APPLIES FOR POST-TIN PLATED PARTS ONLY.
 GAGING: GO, 0.241 [.0095] NO/GO, 0.318 [.0125].
 - △ FREE STATE AND GAP AT CARRIER SIDE TO BE MAINTAINED PER CHART PROVIDED.
- | FREE STATE | CARRIER GAP |
|-----------------------|-----------------------|
| 2.95-3.12 [.116-.123] | 0.25-0.35 [.010-.014] |
| 3.15 [.124] | 0.28-0.35 [.011-.014] |
| 3.18 [.125] | 0.30-0.35 [.012-.014] |
| 3.20 [.126] | 0.33-0.35 [.013-.014] |
| 3.23 [.127] | 0.35 [.014] |
- CARRIER SIDE GAP 0.25-0.35 [.010-.014] TO BE CHECKED WHEN FREE STATE IS COMPRESSED TO 3.12 [.123].
- △ NO CRACKS OR TEARS PERMISSIBLE ALONG SHEAR AND BEND LINE



63861-1

THIS DRAWING IS A CONTROLLED DOCUMENT.		DWN MICHAEL S. FEHNER 07/JUN/95			
		CHK JEFF R. RUTH 08/JUN/95			
DIMENSIONS: INCHES		APVD KURT A. RANDOLPH 08/JUN/95	NAME		
TOLERANCES UNLESS OTHERWISE SPECIFIED:		PRODUCT SPEC		TERMINAL, POKE-IN, 300 SERIES MAG-MATE™	
0 PLC ± -		108-2012		SIZE CAGE CODE DRAWING NO RESTRICTED TO	
1 PLC ± -		APPLICATION SPEC		A2 00779 C=63861	
2 PLC ± 0.25 [.010]		114-2046		SCALE 10:1 SHEET 1 OF 1 REV C1	
3 PLC ± -		CUSTOMER DRAWING			
4 PLC ± -					
ANGLES ± -					
MATERIAL UNS CS11		FINISH TIN PLATING			