

## 9926 Series Branch Circuit Breakers



Weidmüller's range of industrial, DIN-rail mounted circuit breakers are part of our broad electronics portfolio, which provides isolation and protection solutions for automation control systems. Compared with traditional fused protection, these compact circuit breakers can be closely tailored to the application, in order to simplify control and minimize equipment downtime in the event of a fault.

Product ratings and mechanical construction are designed to provide the high levels of reliability expected from automation and control equipment installed on capital plant, and specifications conform to recognized international standards.

### Overview of 9926 Series

#### Model QL

- AC Branch-rated circuit breakers
- UL489 Listed, CSA, VDE, CE conformity
- 1, 2 and 3 pole units (NEW)
- Ratings up to 240V/25A

#### Model QY

- DC Branch-rated circuit breakers
- UL489A Listed, VDE, CE conformity
- 1 and 2 pole units (NEW)
- Ratings up to 125V/60A

### 9926 Series Features

- For industrial AC and DC installations
- Models either for branch applications cULus (UL489/CSA C22.2 No 5.02) approvals or supplemental cURus/UL1077 approved /CSA C22.2 No. 235.
- Single and multi-pole models, with auxiliary/trip options
- Trip point unaffected by ambient temperature changes
- Variety of trip characteristics available, to suit equipment protected
- Narrow width on mounting rail – 13mm per pole
- GFCI models with standard ratings up to 240V/50A
- Full set of approved accessories, such as busbars, power lugs, lock-out handles



## 9926 Series Branch Circuit Breakers and Supplementary Protectors

### 9926 Series Branch Circuit Breakers (AC)

#### Circuit Breakers Hydraulic Magnetic Type

- 1, 2 and 3 pole versions
- 120/240 VAC, 50/60 Hz
- Up to 25A
- Just 13 mm wide, per pole
- Mounts on 35mm DIN-rail
- cULus listed according to UL489 CSA C22.2 No. 5.02, CE, VDE

#### 9926 Series Single Pole



#### 9926 Series Double Pole



#### 9926 Series Triple Pole



Technical Data	
Voltage	120/240 VAC, 50/60Hz
Current minimum	0.5A
Current maximum	25A
Interrupting capacity	10,000A
Dielectric strength	1500V, 50/60Hz
Insulation resistance	100 MΩ
Operating Life	10000 mechanical operations
Operating temperature	-40...+65°C
Wire size*	
*0.5-15A:	14AWG min., 10AWG max.
20-25A:	10AWG min.
Torque	20 in.-lb

#### Accessories

Type	Part No.
Bus-bar (1 pole, insulated, 1 m)	67101904
Bus-bar (2 pole, insulated, 1 m)	67101972
Bus-bar end cap, 1 pole	67101973
Bus-bar end cap, 2 pole	67101974
Power lug, straight (14 mm)	67101960
Power lug, 90° (14 mm)	67101961
Power lug, straight (32 mm)	67102480
Power lug, 90° (32 mm)	67102479
Lock-out handle	67101913

\*Wire sizes: gauges specified are the minimum allowable as per CSA and UL standards.

The 9926 circuit breakers do not have provisions for marking tags. A possible solution is to cut the adhesive SchS2 tag rail to length (approximately 20 mm on a single pole unit so the current rating remains visible or approximately 30 mm on a two pole unit). The SchS2 accepts DEK, WS and ESG 8/17 marking tags. The part number for adhesive SchS2 is 1720600000.

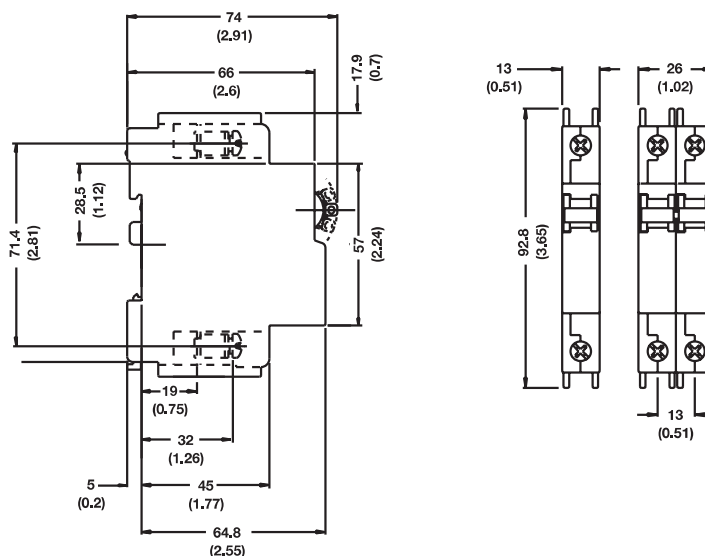
See Trip Curves 1, 3, 9, KM, OP - Page 26

Type: Single Pole (up to 120 VAC)			
Current Ratings (amps)	Description	Part No.	
0.5	QL-1-13-DM-KM-0.5	9926251000	
1	QL-1-13-DM-KM-01	9926251001	
2	QL-1-13-DM-KM-02	9926251002	
3	QL-1-13-DM-KM-03	9926251003	
4	QL-1-13-DM-KM-04	9926251004	
5	QL-1-13-DM-KM-05	9926251005	
6	QL-1-13-DM-KM-06	9926251006	
7	QL-1-13-DM-KM-07	9926251007	
8	QL-1-13-DM-KM-08	9926251008	
10	QL-1-13-DM-KM-10	9926251010	
13	QL-1-13-DM-KM-13	9926251013	
15	QL-1-13-DM-KM-15	9926251015	
16	QL-1-13-DM-KM-16	9926251016	
20	QL-1-13-DM-KM-20	9926251020	
25	QL-1-13-DM-KM-25	9926251025	

Type: Double Pole (up to 240 VAC)			
Current Ratings (amps)	Description	Part No.	
0.5	QL-2-13-DM-KM-0.5	9926252000	
1	QL-2-13-DM-KM-01	9926252001	
2	QL-2-13-DM-KM-02	9926252002	
3	QL-2-13-DM-KM-03	9926252003	
4	QL-2-13-DM-KM-04	9926252004	
5	QL-2-13-DM-KM-05	9926252005	
6	QL-2-13-DM-KM-06	9926252006	
7	QL-2-13-DM-KM-07	9926252007	
8	QL-2-13-DM-KM-08	9926252008	
10	QL-2-13-DM-KM-10	9926252010	
13	QL-2-13-DM-KM-13	9926252013	
15	QL-2-13-DM-KM-15	9926252015	
16	QL-2-13-DM-KM-16	9926252016	
20	QL-2-13-DM-KM-20	9926252020	
25	QL-2-13-DM-KM-25	9926252025	

Type: Triple Pole (up to 240 VAC)			
Current Ratings (amps)	Description	Part No.	
1	QL-3(13)-DM-KM-1A	9926253001	
2	QL-3(13)-DM-KM-2A	9926253002	
5	QL-3(13)-DM-KM-5A	9926253005	
10	QL-3(13)-DM-KM-10A	9926253010	
15	QL-3(13)-DM-KM-15A	9926253015	
20	QL-3(13)-DM-KM-20A	9926253020	
25	QL-3(13)-DM-KM-25A	9926253025	

#### Dimension Diagrams in mm (in.)



9926 Series Branch Circuit Breakers (AC)

**Circuit Breakers with Auxiliary switch, Trip alarm, Combination of both**

- AC voltages (120/240V)
- 1, 2 and 3 pole versions
- cULus listed according to UL489 and C22.2 No. 5.02, CE, VDE
- Factory fitted auxiliary or trip alarm
  - Compact 6.5mm width, per pole
  - Attached to right hand side of circuit breaker

Technical Data	
Voltage	120/240 VAC, 50/0Hz
Current minimum	0.5A
Current maximum	25A
Interrupting capacity	10,000A
Dielectric strength	1500V, 50/60Hz
Insulation resistance	100 MΩ
Operating Life	10000 mechanical operations
Operating temperature	-40...+65°C
Wire size*	
0.5-15A:	14AWG min., 10AWG max.
20-25A:	10AWG min.
Torque	20 in.-lb

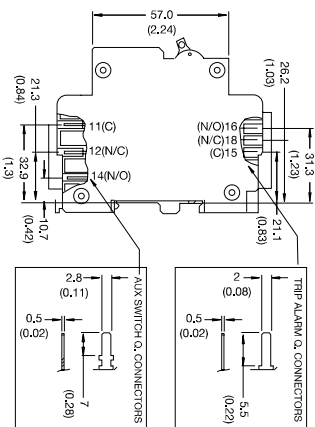
Approval	
cULus listed according to UL489 and C22.2 No. 5.02, CE, VDE	

<sup>1</sup>UL 489 listed (5A, 250 VAC; 0.5A, 80 VDC Auxiliary; 0.5A, 125 VDC Trip Alarm)  
IEC 60947-5-1 Approved (5A, 250 VAC; 0.5A, 110 VDC Auxiliary; 0.5A, 125 VDC Trip Alarm)

\*Wire sizes: gauges specified are the minimum allowable as per CSA and UL standards.

The 9926 circuit breakers do not have provisions for marking tags. A possible solution is to cut the adhesive SchS2 tag rail to length (approximately 20 mm on a single pole unit so the current rating remains visible or approximately 30 mm on a two pole unit). The SchS2 accepts DEK, WS and ESG 8/17 marking tags. The part number for adhesive SchS2 is 172060000.

**Dimension Diagrams in mm (in.)**



**9926 Series Single Pole w/ Auxiliary Contact<sup>1</sup>**



Type: Single Pole Trip (up to 120 VAC)			
Current Ratings (amps)	Description	Part No.	
1	QL-A-1-13-DM-KM-1	9926261001	
2	QL-A-1-13-DM-KM-2	9926261002	
5	QL-A-1-13-DM-KM-5	9926261005	
10	QL-A-1-13-DM-KM-10	9926261010	
15	QL-A-1-13-DM-KM-15	9926261015	
20	QL-A-1-13-DM-KM-20	9926261020	
25	QL-A-1-13-DM-KM-25	9926261025	

**9926 Series Double Pole w/ Auxiliary Contact<sup>1</sup>**



Type: Double Pole Aux (up to 240 VAC)			
Current Ratings (amps)	Description	Part No.	
1	QL-A-2-13-DM-KM-1	9926262001	
2	QL-A-2-13-DM-KM-2	9926262002	
5	QL-A-2-13-DM-KM-5	9926262005	
10	QL-A-2-13-DM-KM-10	9926262010	
15	QL-A-2-13-DM-KM-15	9926262015	
20	QL-A-2-13-DM-KM-20	9926262020	
25	QL-A-2-13-DM-KM-25	9926262025	

**9926 Series Triple Pole w/ Auxiliary Contact<sup>1</sup>**



Type: Triple Pole Aux (up to 240 VAC)			
Current Ratings (amps)	Description	Part No.	
1	QL-A-3(13)-DM-KM-1A	9926263001	
2	QL-A-3-13-DM-KM-2A	9926263002	
5	QL-A-3-13-DM-KM-5A	9926263005	
10	QL-A-3-13-DM-KM-10A	9926263010	
15	QL-A-3-13-DM-KM-15A	9926263015	
20	QL-A-3-13-DM-KM-20A	9926263020	

**9926 Series Single Pole Trip (Alarm Contact)**



Type: Single Pole Trip (up to 120 VAC)			
Current Ratings (amps)	Description	Part No.	
1	QL-T-1-13-DM-KM-1	9926271001	
2	QL-T-1-13-DM-KM-2	9926271002	
5	QL-T-1-13-DM-KM-5	9926271005	
10	QL-T-1-13-DM-KM-10	9926271010	
15	QL-T-1-13-DM-KM-15	9926271015	
20	QL-T-1-13-DM-KM-20	9926271020	
25	QL-T-1-13-DM-KM-25	9926271025	

**9926 Series Double Pole Trip (Alarm Contact)**



Type: Double Pole Trip (up to 240 VAC)			
Current Ratings (amps)	Description	Part No.	
1	QL-T-2-13-DM-KM-1	9926272001	
2	QL-T-2-13-DM-KM-2	9926272002	
5	QL-T-2-13-DM-KM-5	9926272005	
10	QL-T-2-13-DM-KM-10	9926272010	
15	QL-T-2-13-DM-KM-15	9926272015	
20	QL-T-2-13-DM-KM-20	9926272020	
25	QL-T-2-13-DM-KM-25	9926272025	

**9926 Series Triple Pole Trip (Alarm Contact)**



Type: Triple Pole Trip (up to 240 VAC)			
Current Ratings (amps)	Description	Part No.	
1	QL-T-3(13)-DM-KM-1A	9926273001	
2	QL-T-3(13)-DM-KM-2A	9926273002	
5	QL-T-3(13)-DM-KM-5A	9926273005	
10	QL-T-3(13)-DM-KM-10A	9926273010	
15	QL-T-3(13)-DM-KM-15A	9926273015	
20	QL-T-3(13)-DM-KM-20A	9926273020	

**9926 Series Single Pole Combination (Auxiliary & Alarm Contact)<sup>1</sup>**



Type: Triple Pole (up to 120 VAC)			
Current Ratings (amps)	Description	Part No.	
1	QL-AT-1-13-DM-KM-1	9926281001	
2	QL-AT-1-13-DM-KM-2	9926281002	
5	QL-AT-1-13-DM-KM-5	9926281005	
10	QL-AT-1-13-DM-KM-10	9926281010	
15	QL-AT-1-13-DM-KM-15	9926281015	
20	QL-AT-1-13-DM-KM-20	9926281020	
25	QL-AT-1-13-DM-KM-25	9926281025	

**9926 Series Double Pole Combination (Auxiliary & Alarm Contact)<sup>1</sup>**



Type: Double Pole Combo (up to 240 VAC)			
Current Ratings (amps)	Description	Part No.	
1	QL-AT-2-13-DM-KM-1	9926282001	
2	QL-AT-2-13-DM-KM-2	9926282002	
5	QL-AT-2-13-DM-KM-5	9926282005	
10	QL-AT-2-13-DM-KM-10	9926282010	
15	QL-AT-2-13-DM-KM-15	9926282015	
20	QL-AT-2-13-DM-KM-20	9926282020	
25	QL-AT-2-13-DM-KM-25	9926282025	

**9926 Series Triple Pole Combination (Auxiliary & Alarm Contact)<sup>1</sup>**



Type: Triple Pole Combo (up to 240 VAC)			
Current Ratings (amps)	Description	Part No.	
1	QL-AT-3(13)-DM-KM-1A	9926283001	
2	QL-AT-3(13)-DM-KM-2A	9926283002	
5	QL-AT-3(13)-DM-KM-5A	9926283005	
10	QL-AT-3(13)-DM-KM-10A	9926283010	
15	QL-AT-3(13)-DM-KM-15A	9926283015	
20	QL-AT-3(13)-DM-KM-20A	9926283020	



## 9926 Series Branch Circuit Breakers - DC Version

### Circuit Breakers Hydraulic Magnetic Type

- Single and double pole versions
- U2 trip curve for general purpose applications
- 80 and 125 VDC
- Up to 60A
- Just 13 mm wide, per pole
- Mounts on 35 mm DIN-rail
- UL 489A listed
- VDE

### 9926 Series Single Pole (80 VDC)



### 9926 Series Single Pole (125 VDC)



Technical Data	
Voltage	120/240 VAC, 50/60Hz
Current minimum	0.5A
Current maximum	60A
Interrupting capacity	10,000A
Dielectric strength	1500V, 50/60Hz
Insulation resistance	100 MΩ
Operating Life	10000 mechanical operations
Operating temperature	-40...+65°C
Wire size*	
1-15A:	14AWG min., 10AWG max.
20-25A:	10AWG min.
Torque	20 in.-lb

Approval	
UL listed to	UL489

\*Wire sizes: gauges specified are the minimum allowable as per CSA and UL standards.

The 9926 circuit breakers do not have provisions for marking tags. A possible solution is to cut the adhesive SchS2 tag rail to length (approximately 20 mm on a single pole unit so the current rating remains visible or approximately 30 mm on a two pole unit). The SchS2 accepts DEK, WS and ESG 8/17 marking tags. The part number for adhesive SchS2 is **1720600000**.

Type	Part No.
Bus-bar (1 pole, insulated, 1 m)	<b>67101904</b>
Bus-bar end cap, 1 pole	<b>67101973</b>
Power lug, straight (14 mm)	<b>67101960</b>
Power lug, 90° (14 mm)	<b>67101961</b>
Power lug, straight (32 mm)	<b>67102480</b>
Power lug, 90° (32 mm)	<b>67102479</b>
Lock-out handle	<b>67101913</b>

See Trip Curves 1, 9, OP, U2 - Page 26

Type: Single Pole (80 VDC)			
Current Ratings (amps)	Description	Part No.	
0.5	QY-1-13-DM-U2-0.5	<b>9926251900</b>	
1	QY-1-13-DM-U2-01	<b>9926251901</b>	
2	QY-1-13-DM-U2-02	<b>9926251902</b>	
3	QY-1-13-DM-U2-03	<b>9926251903</b>	
4	QY-1-13-DM-U2-04	<b>9926251904</b>	
5	QY-1-13-DM-U2-05	<b>9926251905</b>	
10	QY-1-13-DM-U2-10	<b>9926251910</b>	
15	QY-1-13-DM-U2-15	<b>9926251915</b>	
20	QY-1-13-DM-U2-20	<b>9926251920</b>	
25	QY-1-13-DM-U2-25	<b>9926251925</b>	
30	QY-1-13-DM-U2-30	<b>9926251930</b>	
35	QY-1-13-DM-U2-35	<b>9926251935</b>	
40	QY-1-13-DM-U2-40	<b>9926251940</b>	
45	QY-1-13-DM-U2-45	<b>9926251945</b>	
50	QY-1-13-DM-U2-50	<b>9926251950</b>	
60	QY-1-13-DM-U2-60	<b>9926251960</b>	

Type: Single Pole (125 VDC)			
Current Ratings (amps)	Description	Part No.	
1	QY-1-13-DM-U2-01-B1	<b>9926251801</b>	
2	QY-1-13-DM-U2-02-B1	<b>9926251802</b>	
3	QY-1-13-DM-U2-03-B1	<b>9926251803</b>	
4	QY-1-13-DM-U2-04-B1	<b>9926251804</b>	
5	QY-1-13-DM-U2-05-B1	<b>9926251805</b>	
10	QY-1-13-DM-U2-10-B1	<b>9926251810</b>	
15	QY-1-13-DM-U2-15-B1	<b>9926251815</b>	
20	QY-1-13-DM-U2-20-B1	<b>9926251820</b>	
25	QY-1-13-DM-U2-25-B1	<b>9926251825</b>	
30	QY-1-13-DM-U2-30-B1	<b>9926251830</b>	
35	QY-1-13-DM-U2-35-B1	<b>9926251835</b>	
40	QY-1-13-DM-U2-40-B1	<b>9926251840</b>	
45	QY-1-13-DM-U2-45-B1	<b>9926251845</b>	
50	QY-1-13-DM-U2-50-B1	<b>9926251850</b>	
60	QY-1-13-DM-U2-60-B1	<b>9926251860</b>	

### 9926 Series Double Pole (80 VDC)



### 9926 Series Double Pole (125 VDC)



Type: Double Pole (80 VDC)			
Current Ratings (amps)	Description	Part No.	
5	QY-2-13-DM-U2-5A	<b>9926252905</b>	
10	QY-2-13-DM-U2-10A	<b>9926252910</b>	
15	QY-2-13-DM-U2-15A	<b>9926252915</b>	
16	QY-2-13-DM-U2-16A	<b>9926252916</b>	
20	QY-2-13-DM-U2-20A	<b>9926252920</b>	
40	QY-2-13-DM-U2-40A	<b>9926252940</b>	

Type: Double Pole (125 VDC)			
Current Ratings (amps)	Description	Part No.	
5	QY-2-13-DM-U2-5A-B1	<b>9926252805</b>	
10	QY-2-13-DM-U2-10A-B1	<b>9926252810</b>	
15	QY-2-13-DM-U2-15A-B1	<b>9926252815</b>	
20	QY-2-13-DM-U2-20A-B1	<b>9926252820</b>	
30	QY-2-13-DM-U2-30A-B1	<b>9926252830</b>	
32	QY-2-13-DM-U2-32A-B1	<b>9926252832</b>	
40	QY-2-13-DM-U2-40A-B1	<b>9926252840</b>	
50	QY-2-13-DM-U2-50A-B1	<b>9926252850</b>	
60	QY-2-13-DM-U2-60A-B1	<b>9926252860</b>	