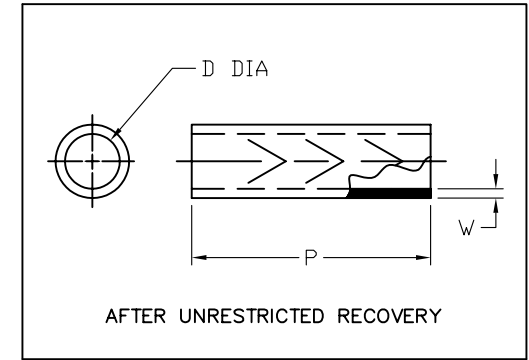
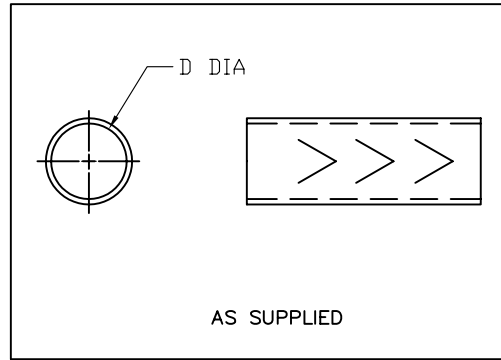


REVISIONS		
LTR	DESCRIPTION	DATE
A	ECO-07-012324	06/20/2007

**NOTES:**

- APPLICABLE STANDARDS/SPECIFICATIONS:
  - ASME Y14.100
  - ANSI Y14.5M-1982.
- DIMENSIONS APPEARING IN TABLE ARE AS FOLLOWS:
  - AS SUPPLIED
  - AFTER UNRESTRICTED RECOVERY
- MATERIAL: RW-200
- COLOR: BLACK



TYCO PART DESCRIPTION	UNISON PART NUMBER	D		P ± .25 b	W REF b
		MIN a	MAX b		
RT-1145-0X-51-0	508564-1	1.000	.250	1.250	.035
RT-1145-0X-52-0	508564-2	1.250	.312	1.250	.035
RT-1145-0X-53-0	508564-3	1.500	.375	1.250	.038
RT-1145-0X-57-0	508564-4	1.750	.375	1.250	.038
RT-1145-0X-54-0	508564-5	2.000	.500	1.250	.044
RT-1145-0X-55-0	508564-6	2.375	.625	1.250	.049
RT-1145-0X-56-0	508564-7	2.675	.750	1.250	.055

**CUSTOMER DRAWING**

UNLESS OTHERWISE SPECIFIED DIMENSIONS ARE INCHES. METRIC DIMENSIONS ARE IN BRACKETS.  DECIMAL TOLERANCES .XXX ± 0.005 [0.13 mm] .XX ± 0.01 [0.25 mm] .X ± 0.1 [0.50 mm]  ANGLE TOLERANCE .X ± 1 DEG.	DRAWN UNGUYEN	DATE 06/20/2007	 Raychem Molded Parts 305 Constitution Dr Menlo Park, CA 94025
	RPN N/A		
THIRD ANGLE PROJECTION		SIZE B	CODE IDENT. NO. 06090
© 2007 Tyco Electronics Corporation. All rights reserved.		DWG. NO. RT-1145-0X-5X-0	
DO NOT SCALE THIS DRAWING		SHEET 1 OF 1	

If this document is printed it becomes uncontrolled. Check for the latest revision