

SAW Filter 912.10MHz
Part No: MA06630

Model: TA0530A
Rev No: 1

A. MAXIMUM RATING:

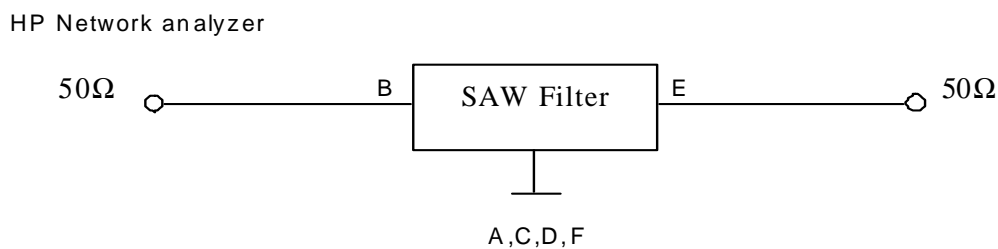
1. Input Power Level: 10dBm
2. DC voltage: 5V
3. Operating Temperature: -20°C to +65°C
4. Storage Temperature: -40°C to +85°C

B. CHARACTERISTICS:

Item	Min.	Typ.	Max.
Center frequency Fc MHz	-	912.1	-
Insertion loss 907 ~ 917.2MHz IL (dB)	-	2.95	4.1
Amplitude ripple 907 ~ 917.2MHz (dB)	-	0.5	1.8
Attenuation (Reference level from 0dB)			
10 ~ 830MHz (dB)	40	48	-
830 ~ 890MHz (dB)	30	41	-
930 ~ 960 MHz (dB)	14	27	-
960 ~ 1200MHz (dB)	40	46	-
Source impedance Z _S (Ω)	-	50	-
Load impedance Z _L (Ω)	-	50	-

Note1. No matching network required for operation at 50Ω

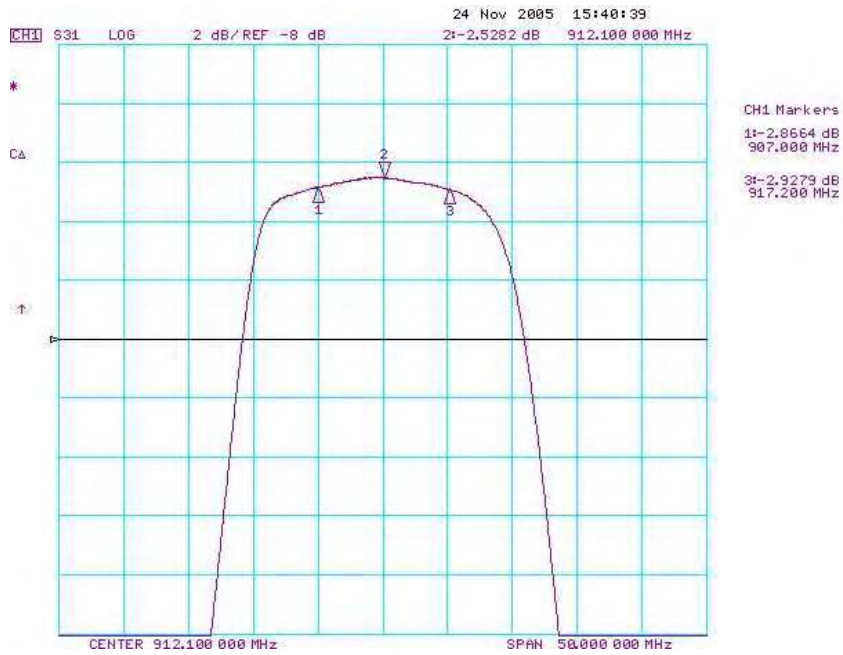
C. MEASUREMENT CIRCUIT:



SAW Filter 912.10MHz
Part No: MA06630

Model: TA0530A
Rev No: 1

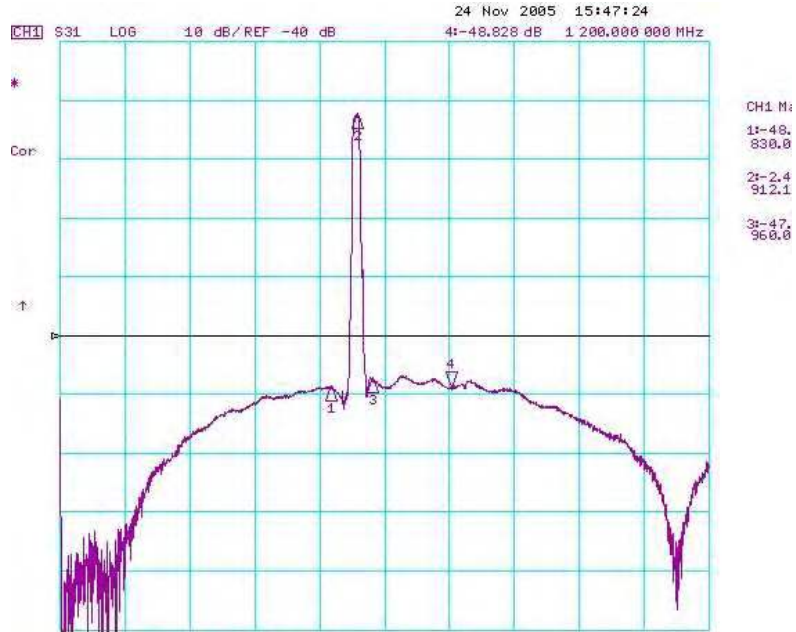
D. TRANSFER FUNCTION:



SAW Filter 912.10MHz
Part No: MA06630

Model: TA0530A
Rev No: 1

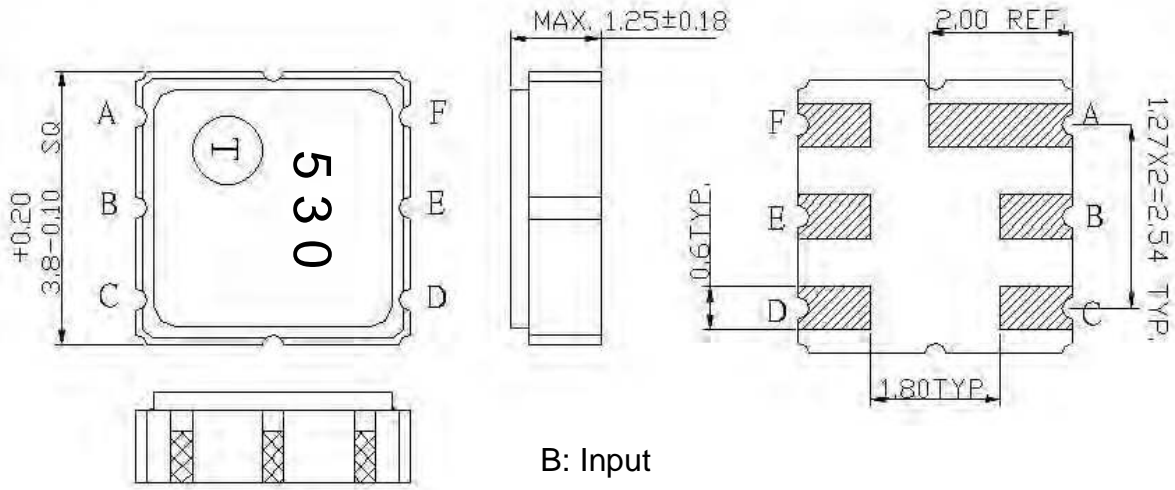
Wideband



SAW Filter 912.10MHz
Part No: MA06630

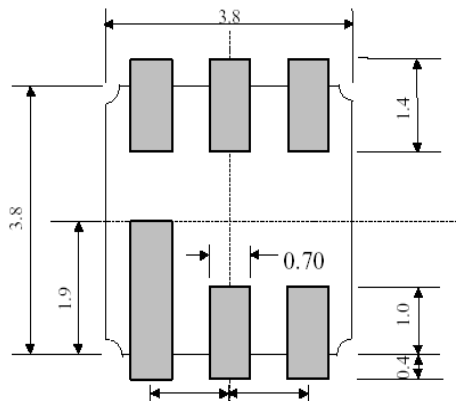
Model: TA0530A
Rev No: 1

E. OUTLINE DRAWING:



B: Input
 E: Output
 A, C, D, F: Ground
 Unit: mm

F. PCB FOOTPRINT:

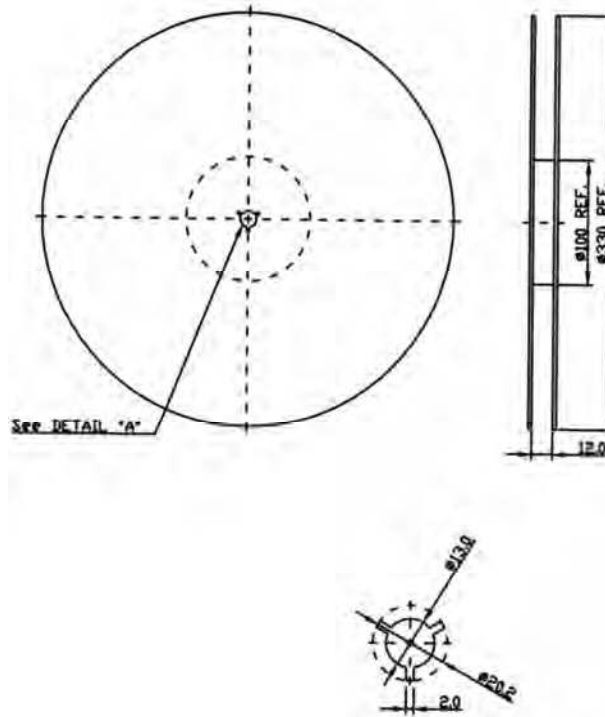


SAW Filter 912.10MHz
Part No: MA06630

Model: TA0530A
Rev No: 1

G. PACKING:

1. REEL DIMENSION



2. TAPE DIMENSION

