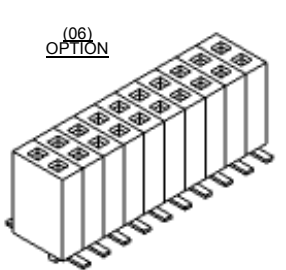
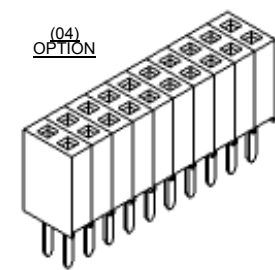
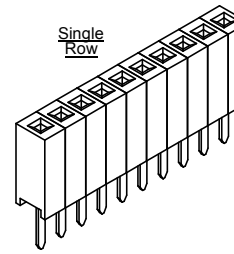
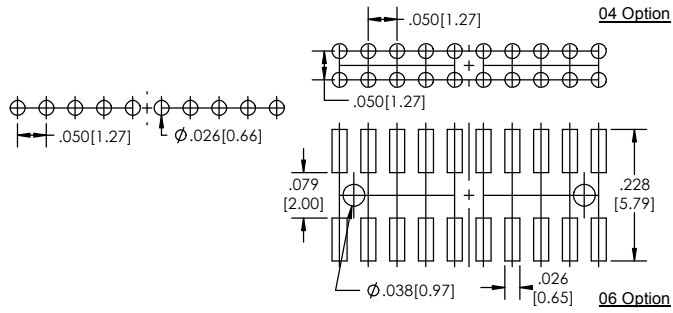


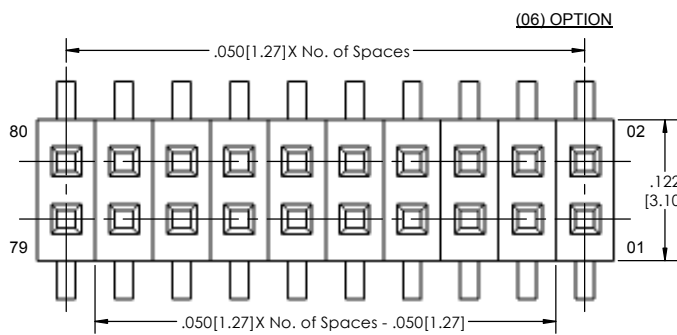
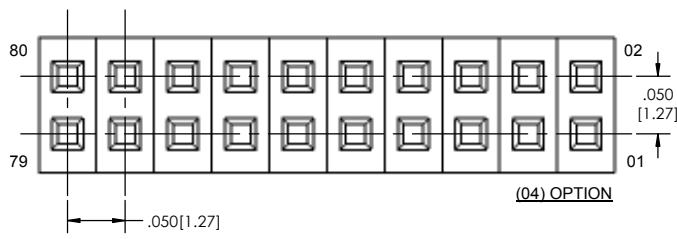
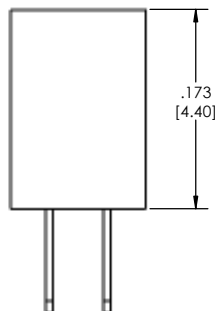
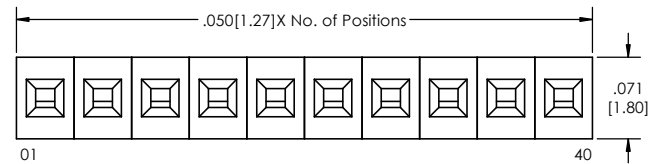
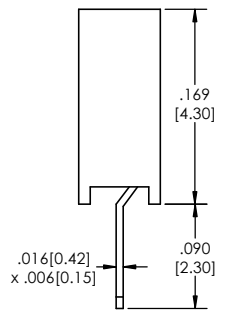
Recommended P.C. Board Layout
SCALE 6:1



SSHS-5 [XX] - [X] - [XX] - [XX] - [XXX] - [XX] - [X] - [XX] - [LF]
(A) (B) (C) (D) (E) (F) (G) (H) (I)

- A. Pins Per Row
 - 1 through 40
- B. Row Specification
 - S= Single Row
 - D= Double Row
- C. Mount Option
 - 04= Thru Hole
 - 06= Surface Mount
- D. Plating Options
 - See Plating Options below
- E. Polarized Position
 - Leave blank if not needed
 - If required, specify empty pin position
 - e.g. 012 for Pin 12
- F. Packing Information
 - TR= Tape and Reel
 - TB= Tube
- G. Pad
 - P= Plastic
 - K= Kapton
 - O= No Pad
 - If left blank, packaging at MLE's discretion
 - Pad may be metal, mylar or plastic
- H. Alignment Pin Option
 - Leave blank if not needed
 - AP= With
- I. Lead Free

Mates with:
BSTC.
BSTCM.
BSTS.
TBSTC.
TBSTCM.
TBSTS.
TSHC.
TSHR.
TSHS.
TSHSCM.
TTSHC.
TTSHR.
TTSHS.
TTSHSM.

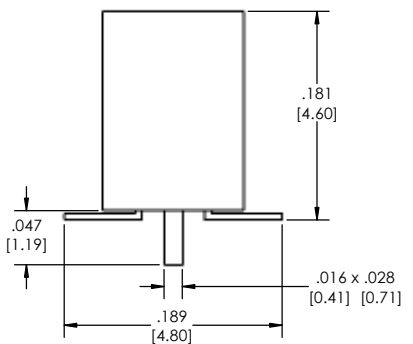


Plating options	
G	-10µ Gold on Contact Area/ Flash on Tail
T	-Matte Tin all Over
GT	-10µ Gold on Contact Area/ Matte Tin on Tail
H	-30µ Gold on Contact Area/ Matte Tin on Tail
F	-Gold Flash over Entire Pin
FT	-Gold Flash on Contact Area/ Matte Tin on Tail

Specifications:
Insertion Depth: .050 [1.27] Min.
Insertion Force- Per Contact- H Plating:
3.8oz. [1.05N] avg. with .016 [0.41] Sq. pin
Withdrawal Force- Per Contact- H Plating:
2.0oz. [0.65N] avg. with 0.16 [0.41] Sq. pin
Current Rating: 1.5 Ampere
Insulation Resistance: 1000M Ohms Min.
Dielectric Withstanding: 300V AC
Contact Resistance: 20M Ohms Max.
Operation Temperature: -40°C to +105°C
Max. Process Temperature
Peak: 260°C up to 10 secs.
Process: 230°C up to 60 secs.
Wave: 260°C up to 6 secs.
Reflow: 260°C up to 10 secs.
Manual Solder: 350°C up to 5 secs.

Materials:
Contact Material: Phosphor Bronze
Insulator Material: Nylon 6T
Plating: Au or Sn over 50µ" (1.27) Ni

Tails may be clipped to achieve specific dimensions
Products cut to specific sizes are uncancelable/nonreturnable.
Parts are subject to change without notice.



PROPRIETARY AND CONFIDENTIAL
THE INFORMATION CONTAINED IN THIS DRAWING IS THE SOLE PROPERTY OF Major League Electronics. ANY REPRODUCTION IN PART OR AS A WHOLE WITHOUT THE WRITTEN PERMISSION OF Major League Electronics IS PROHIBITED.

UNLESS OTHERWISE SPECIFIED:		NAME	DATE
DIMENSIONS ARE IN INCHES		DRAWN	EOW 10/01/15
TOLERANCES:		CHECKED	GWE 10/01/15
ONE DECIMALS ±.100		ENG APPR.	
TWO DECIMAL ±.010		MFG APPR.	
THREE DECIMAL ±.002		ADDRESS:	
FOUR DECIMAL ±.002		2533 Centennial Blvd.	
NEXT ASSY USED ON		Jeffersonville, IN 47130	
APPLICATION		Phone: 812-670-4174	
DO NOT SCALE DRAWING		Fax: 812-670-4175	
		E-Mail: mle@mlelectronics.com	

		TITLE: SSHS-5 SERIES	
		SIZE DWG. NO.	REV E
SCALE 12:1		SHEET 1 OF 1	