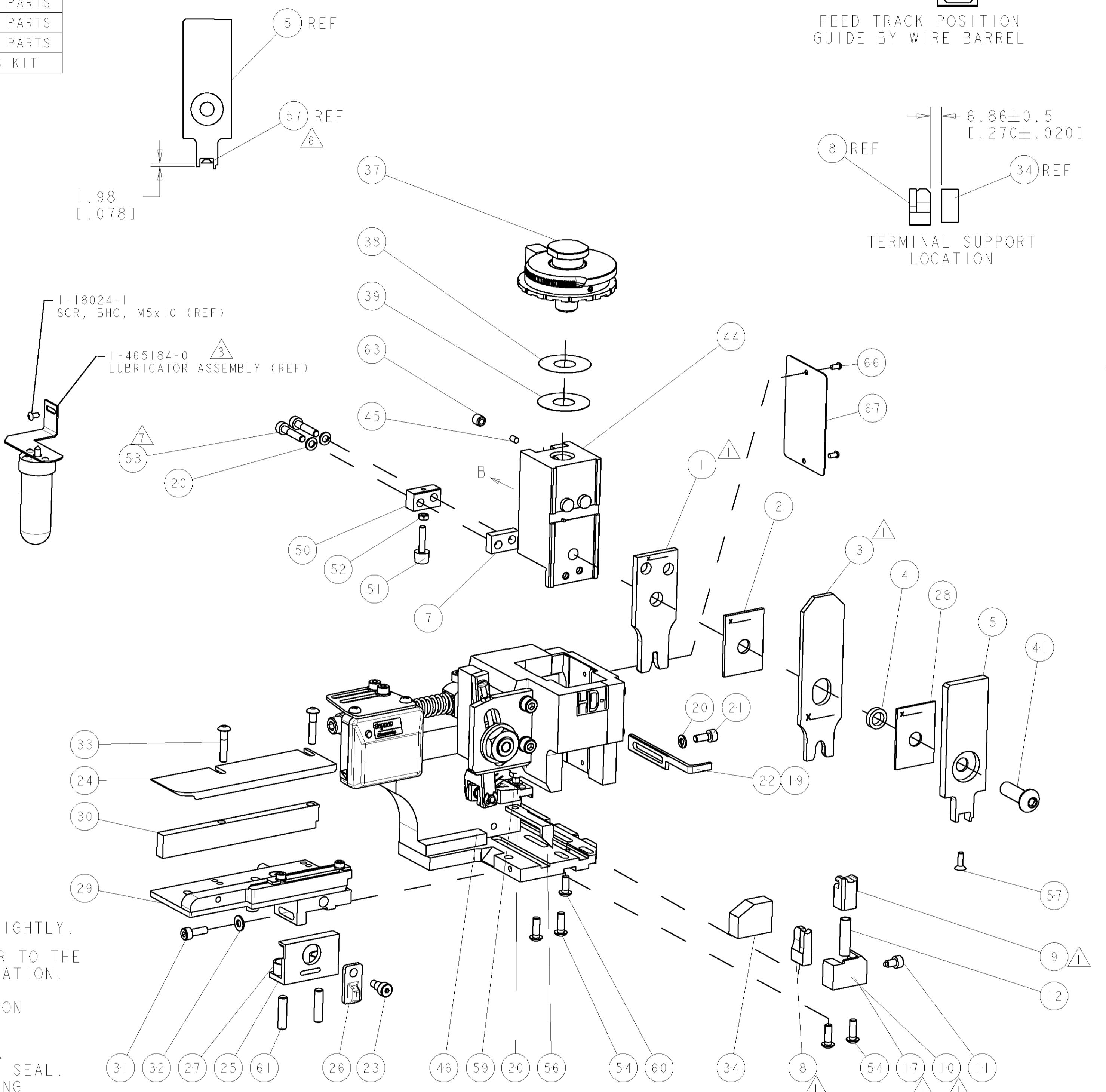


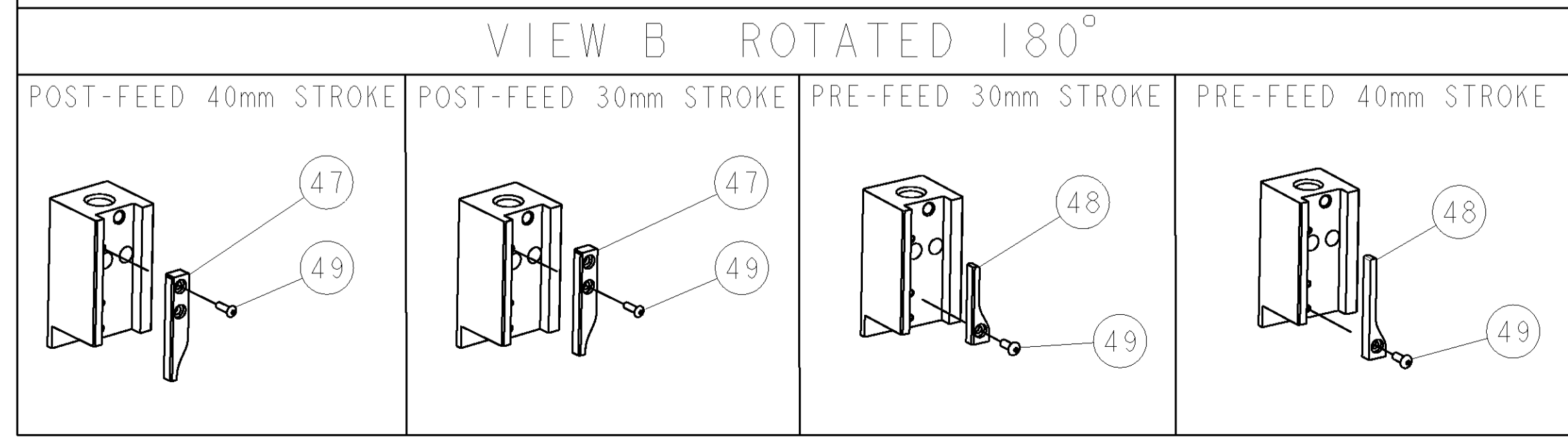
PART NUMBER	REV	TERMINATOR	FEED TYPE	DESCRIPTION
1528775-1	A	LEADMAKER	MECH POST FEED	CUTS CARRIER
1528775-2	A	BENCH	MECH PRE FEED	CUTS CARRIER
1528775-6	A	LEADMAKER	MECH POST FEED	CONTINUOUS CARRIER
7-1528775-1	A	LEADMAKER	MECH POST FEED	-1 AND SPARE PARTS
7-1528775-2	A	BENCH	MECH PRE FEED	-2 AND SPARE PARTS
7-1528775-6	A	LEADMAKER	MECH POST FEED	-6 AND SPARE PARTS
7-1528775-7	A	-	-	SPARE PARTS KIT

CRIMP DATA		TE TERMINAL		TE CRIMP SPECS	
TERMINAL NAME: MCON 2.8 RECEPTACLE					
CRIMP	SIZE	TYPE	RANGE		
WIRE	3.05 [1.20 IN]	F	>2.5-4.00mm ²		
INSUL	5.33 [2.10 IN]	O	4.10 MAX [1.61 IN MAX]		
WIRE STRIP LENGTH 5.10-5.70 [1.201-.224 IN]		APPL INSTRUCTIONS 408-8322 & 408-8490			
TERMINAL APPL SPEC 114-18718		FEED 14.50 [1.571 IN]			
TERMINALS APPLIED					
TERMINAL PN	SEAL PN				
1670806	828985-1				
WIRE SIZE		CRIMP HEIGHT	REF SETTING		
4.00mm ²		2.10 ±0.05 [1.083 ±.002 IN]	E I		



*** WARNING**
ON INSTALLATION, SET WIRE DISC TO LARGEST WIRE SIZE SETTING. USE OF SETTINGS BELOW MIN. REQUIRED CRIMP HEIGHT SETTING WILL CAUSE DAMAGE TO CRIMP TOOLING.

- △ RECOMMENDED SPARE PARTS.
- 2. GREASE RAM, CAM, CAM FOLLOWER AND FEED ROD LIGHTLY.
- △ CERTAIN TERMINALS REQUIRE LUBRICATION. REFER TO THE APPLICATOR INSTRUCTION SHEET FOR MORE INFORMATION.
- 4. LUBRICATE DAILY PER THE APPLICATOR INSTRUCTION SHEET SUPPLIED WITH THE APPLICATOR.
- △ THIS APPLICATOR APPLIES TERMINAL WITH A SEAL. INSULATION DIA QUOTED IS OUTSIDE DIAMETER OF SEAL. WIRE INSULATION DIA IS DEPENDENT ON SEAL BEING APPLIED. SEAL PN - 828985-1. INS. DIA RANGE IS 3.4-3.7 (FLR TYPE INS.).
- △ APPLY TORQ-SEAL IN ALLEN SOCKET TO FILL HOLE AFTER FLAT HD HAS BEEN ADJUSTED TO CORRECT HEIGHT AT QUALIFICATION. APPLY #1-23419-5 LOC-TITE TO THREADS.
- △ CUT TO LENGTH AT ASSEMBLY.



-77	-76	-72	-71	-6	-2	-1	PART NO	DESCRIPTION	ITEM NO
-	-	-	-	-	-	-	-	-	84
-	-	-	-	-	-	-	-	-	83
-	-	-	-	-	-	-	-	-	82
-	-	-	-	-	-	-	-	-	81
-	-	-	-	-	-	-	-	-	80
-	-	-	-	-	-	-	-	-	79
-	-	-	-	-	-	-	-	-	78
-	-	-	-	-	-	-	-	-	77
-	-	-	-	-	-	-	-	-	76
-	-	-	-	-	-	-	-	-	75
-	-	-	-	-	-	-	-	-	74

SET UP GAGE 458637-3

LOC	DIST	REV	DATE	BY	APPV
A	66				
A		SEE ECO-07-023847	10OCT2007	LJL	MC
A1		SEE ECR-08-003850	27FEB2008	LJL	MC

REVISIONS		DATE	BY	APPV
1				
2				
3				
4				
5				
6				
7				
8				
9				
10				
11				
12				
13				
14				
15				
16				
17				
18				
19				
20				
21				
22				
23				
24				
25				
26				
27				
28				
29				
30				
31				
32				
33				
34				
35				
36				
37				
38				
39				
40				
41				
42				
43				
44				
45				
46				
47				
48				
49				
50				
51				
52				
53				
54				
55				
56				
57				
58				
59				
60				
61				
62				
63				
64				
65				
66				
67				
68				
69				
70				
71				
72				
73				

THIS DRAWING IS UNPUBLISHED. RELEASED FOR PUBLICATION. COPYRIGHT © BY TYCO ELECTRONICS CORPORATION. ALL RIGHTS RESERVED.

DIMENSIONS: mm [IN] TOLERANCES UNLESS OTHERWISE SPECIFIED: 0 PLC ±, 1 PLC ±, 2 PLC ±, 3 PLC ±, 4 PLC ±, ANGLES ±.

MATERIAL: FINISH:

APPROVED: M. CLIFFORD DATE: 05MAR2007

DESIGNED: J.L. LOETHOUSE DATE: 05MAR2007

PRODUCT SPEC: APPLICATION SPEC: See Table

WEIGHT: CUSTOMER DRAWING: SCALE: 3:5 SHEET 1 OF 1 REV A1

TYCO ELECTRONICS Tyco Electronics Harrisburg, PA 17105-3608

FINE ADJUST SIDE FEED HDI APPLICATOR

SIZE: 00779 C=1528775