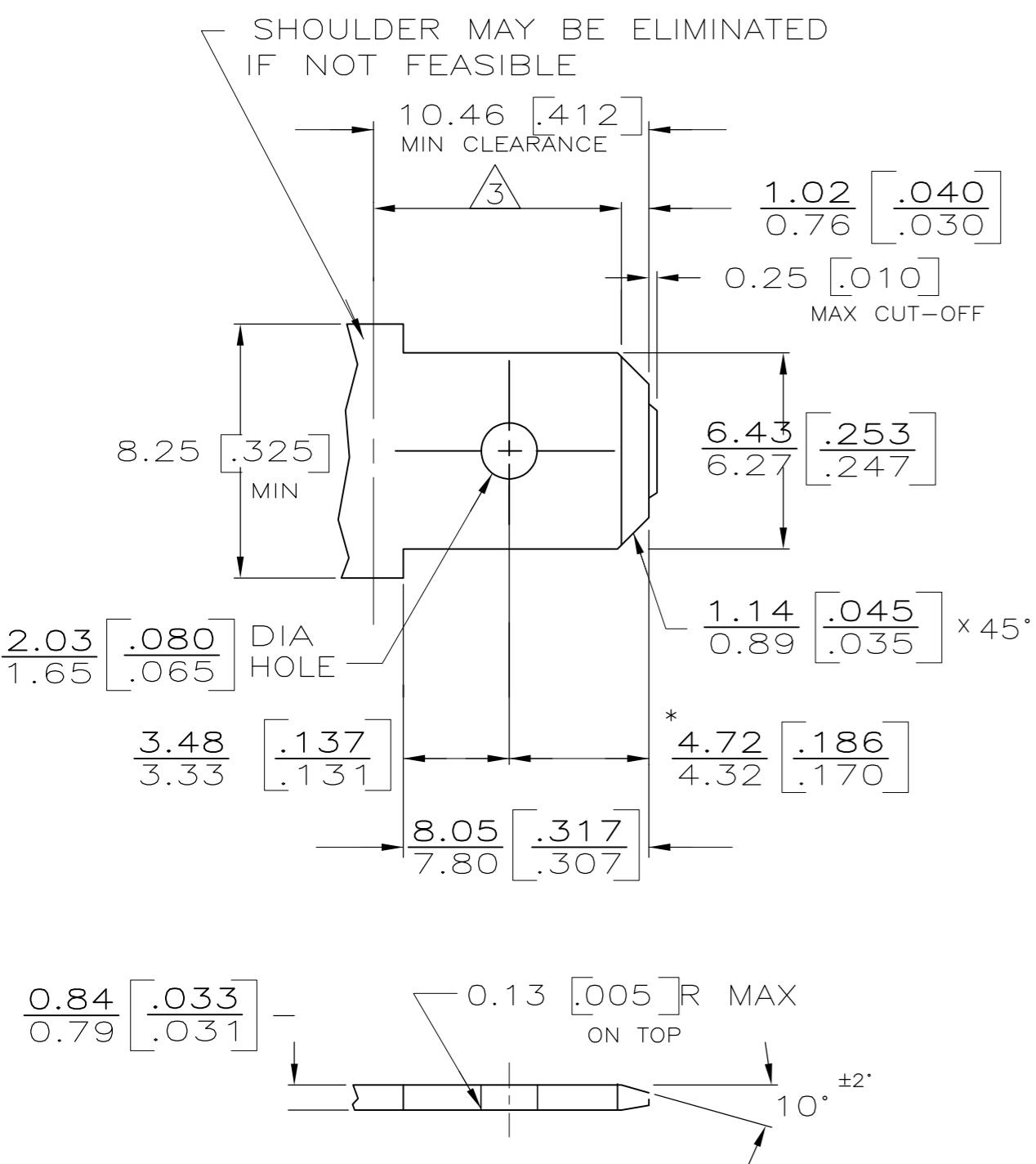
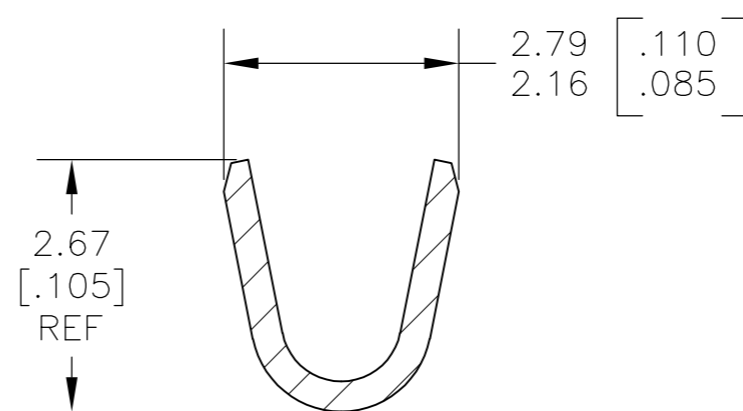
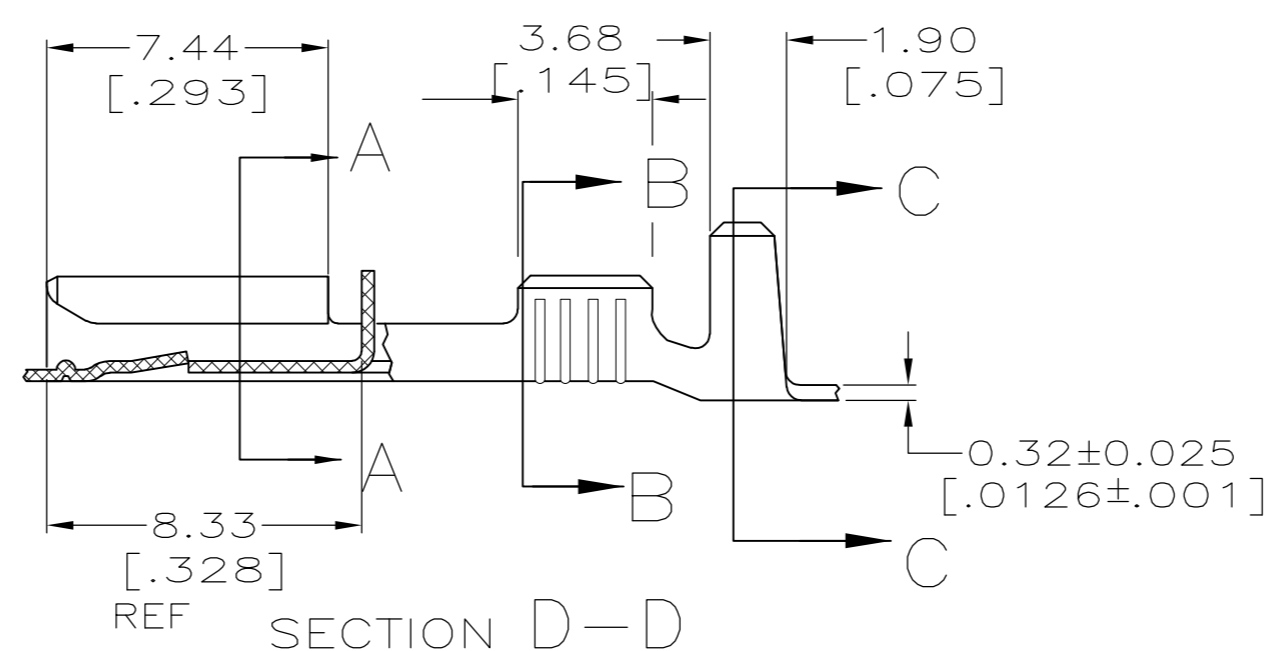
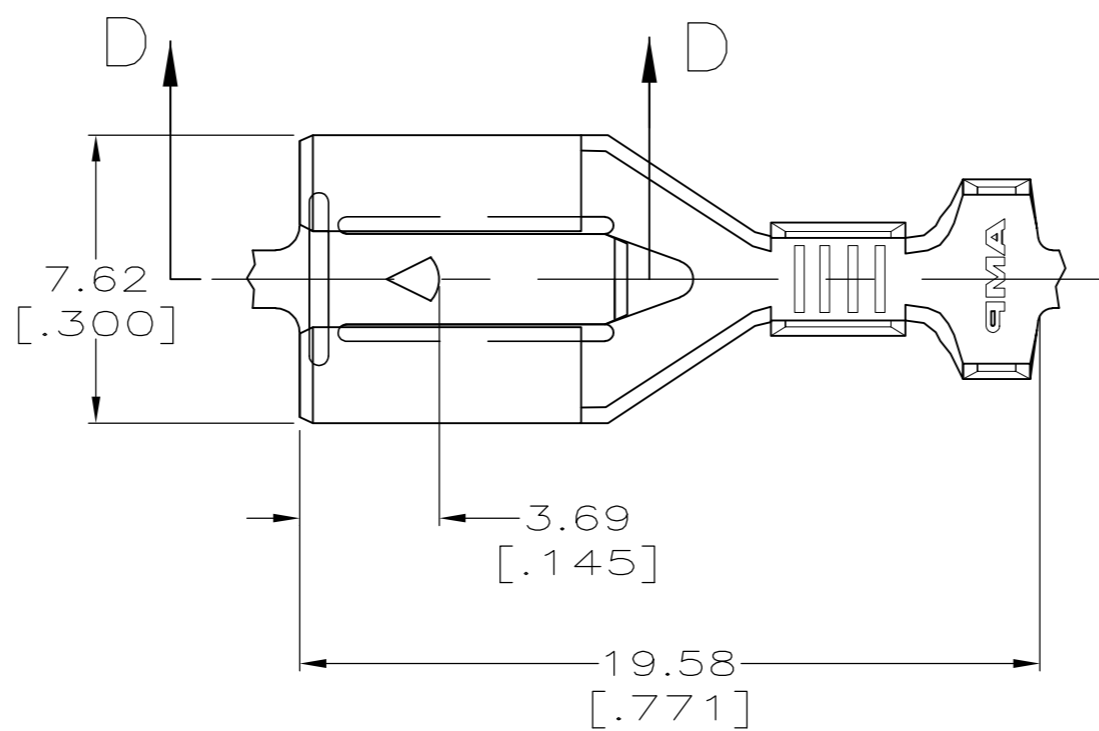


LOC	DIST	REVISIONS			
P	LTR	DESCRIPTION	DATE	DWN	APVD
AF	50	A1	REL PER ECR 08-010125	21APR08	JR RL

SUGGESTED MATING TAB

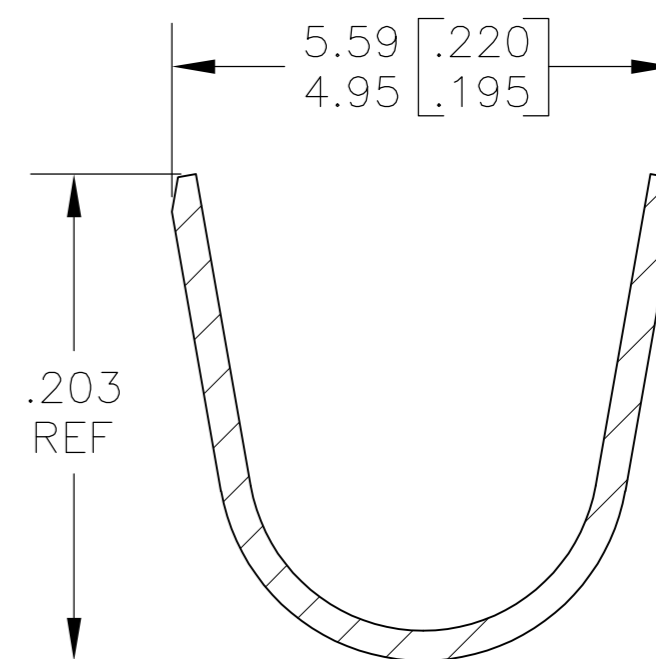
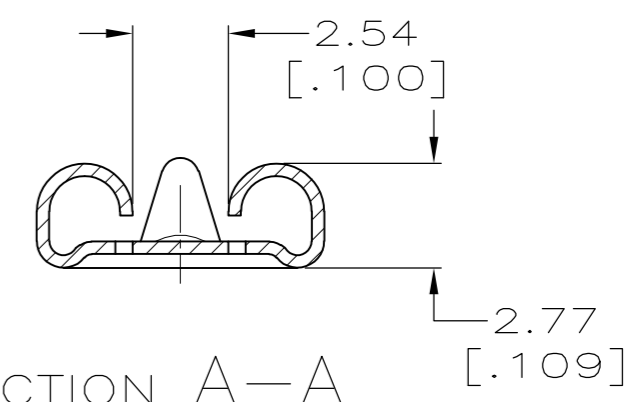


- 1 - MATL: 1/2H BRASS OR NICKEL PL STEEL.
 - 2 - NO BURRS PERMISSIBLE AT HOLE.
 - 3 - MUST BE FLAT WITHIN 0.076 [.003] OVER THIS LENGTH.
 - 4 - TIN PLATING IS REQUIRED ON BRASS WHEN TERMINAL TEMP. IS OVER 225°F.
 - 5 - HOLE MUST BE SYMMETRICAL ABOUT TAB Q WITHIN 0.076 [.003]
- * TO BE USED ONLY WHEN SHOULDER IS ELIMINATED.



SECTION B-B
SCALE 10:1

- 1 CONTINUOUS STRIP ON REELS.
- 2 ACCEPTS #22-#18 AWG WIRE SIZES. WIRE CRIMP: .080 F TYPE
- 3 INSULATION RANGE IS 2.29-3.94 [.090-.155] DIA. INSULATION CRIMP: .180 F TYPE



SECTION C-C
SCALE 10:1

0.002032[.000080] MIN TIN PLATE	1742630-2
-	1742630-1
FINISH	PART NUMBER

THIS DRAWING IS A CONTROLLED DOCUMENT.		DWN	JR RUTH	14AUG07	Tyco Electronics Corporation Harrisburg, PA 17105-3608
DIMENSIONS: MM [INCHES]		CHK	MS FEHER	14AUG07	
TOLERANCES UNLESS OTHERWISE SPECIFIED:		APVD	R LONDON	14AUG07	
0 PLC ± - 1 PLC ± - 2 PLC ± 0.25 [.010] 3 PLC ± - 4 PLC ± - ANGLES ± -		PRODUCT SPEC	-		
MATERIAL	H06 BRASS	FINISH	SEE TABLE	APPLICATION SPEC	114-2074
WEIGHT		-		SIZE	A2
CUSTOMER DRAWING		SCALE		CAGE CODE	00779
SCALE		5:1		DRAWING NO	C=1742630
SHEET		1 of 1		RESTRICTED TO	-
REV		A1			