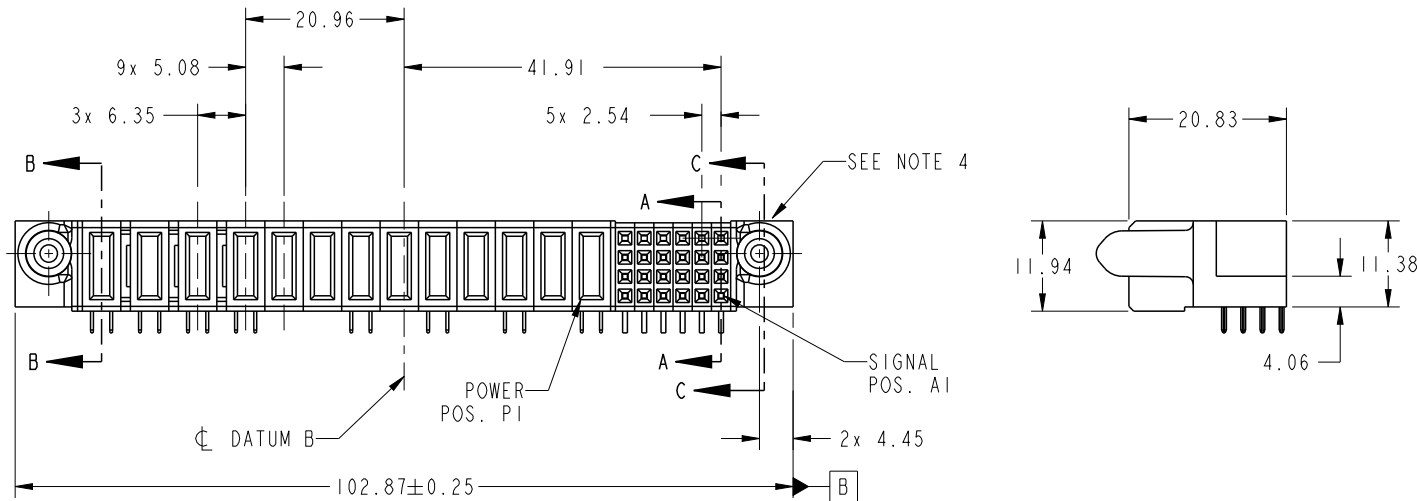


PRODUCT NO. 51915-424-- NOTE 3	ROWS D C B A	POWER														SIGNAL					E1	
		E2	P13	P12	P11	P10	P9	P8	P7	P6	P5	P4	P3	P2	P1	6	5	4	3	2		1
			PA	PC	PA	PC	X	X	PC	X	PC	X	PC	X	PA	H	H	H	H	H	H	
																G	G	G	G	G	G	
																F	F	F	F	F	F	
																E	E	E	E	E	E	

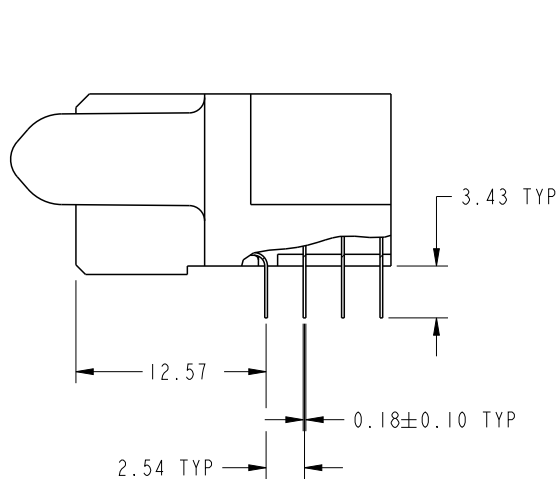
CODE	DIM "M" MATING LENGTH	CONTACT TYPE
PC	[2.34]	POWER
PA	[1.07]	POWER
H	[N/A]	SIGNAL
G	[N/A]	SIGNAL
F	[N/A]	SIGNAL
E	[N/A]	SIGNAL
X	[N/A]	OMITTED



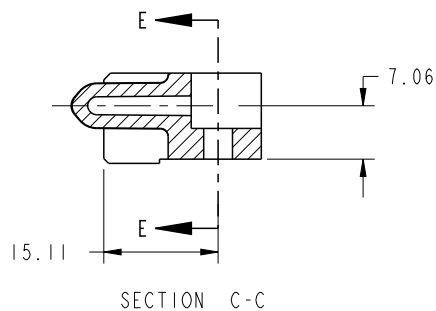
spec ref	SEE NOTES			dr	Luo Weller	2014/01/10	projection	MM	size	A4	scale	1:1	
tolerance std	TOLERANCES UNLESS OTHERWISE SPECIFIED			eng	Luo Weller	2014/02/16			ecn no	-			
SEE NOTES				chr	-	-				product family	PwrBlade		
surface ✓	linear	0.X	±0.50		title	24S + 9DCP + 4P	dwg no	51915-424	rev	A			
		0.XX	±0.25							www.fci.com	cat. no.	Product - Customer Drw	sheet 1 of 4
		0.XXX	±0.10										
angular	0°	±2°											

PRODUCT NUMBER

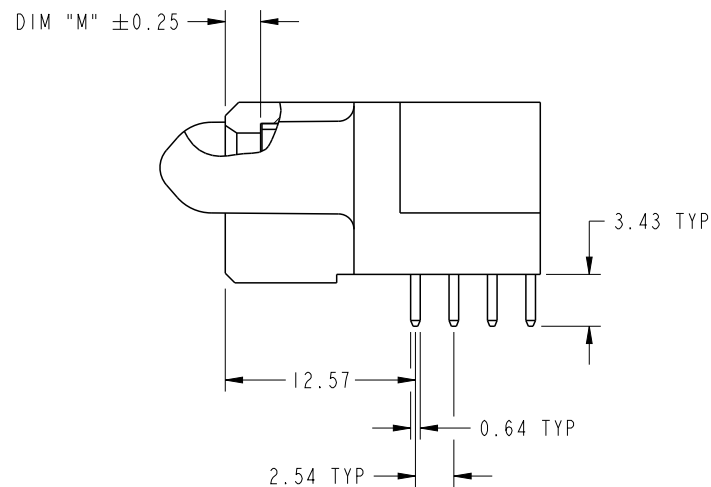
51915-424__
NOTE 3



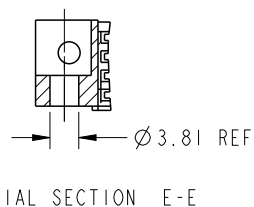
BROKEN-OUT SECTION A-A
SCALE 2:1



SECTION C-C



BROKEN-OUT SECTION B-B
SCALE 2:1

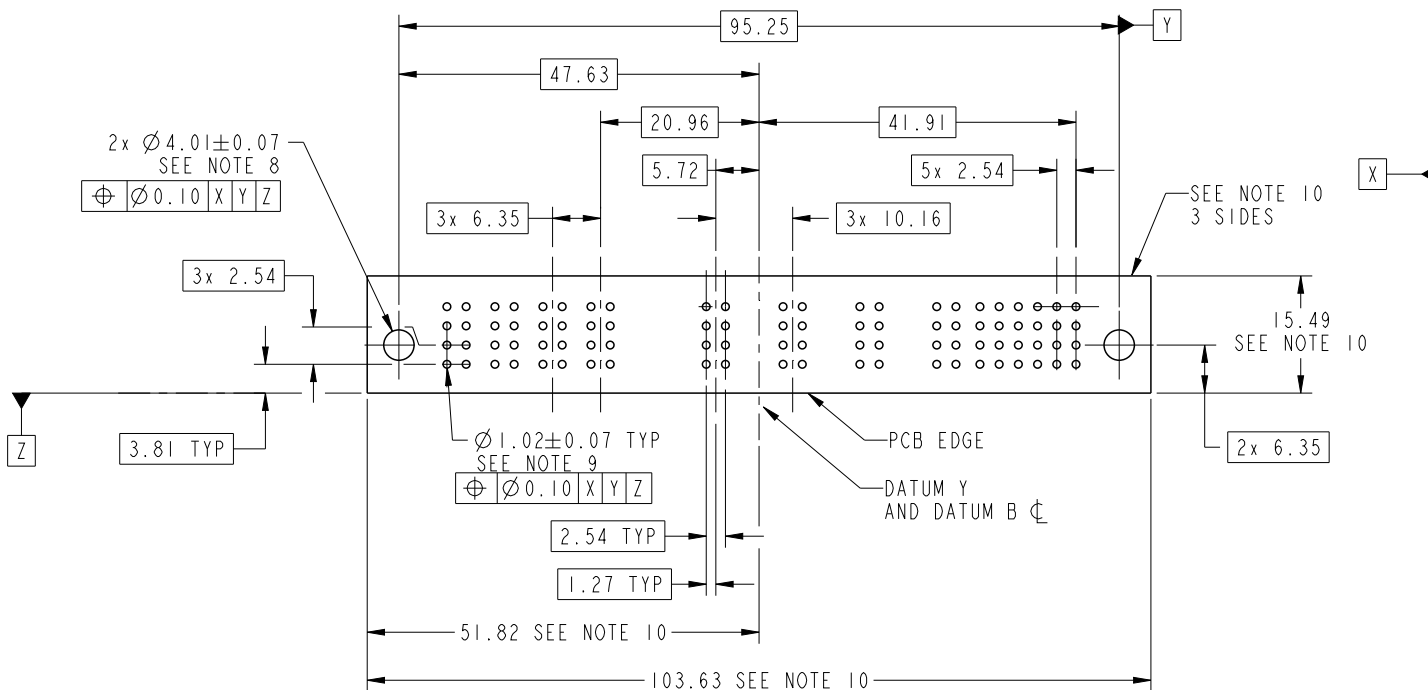


PARTIAL SECTION E-E

dr	Luo Weller	2014/01/10	projection 	MM 	size	A4	scale	1:1
eng	Luo Weller	2014/02/16			ecn no	-		
chr	-	-			rel level	Released		
appr	Pei-Ming Zheng	2014/02/16	product family	PwrBlade	rev	A		
	title	24S + 9DCP + 4P R/A SOLDER RECEPTACLE		dwg no	51915-424			
www.fci.com	cat. no.	Product - Customer Drw			sheet 2 of 4			

PRODUCT NUMBER

51915-424__
NOTE 3



RECOMMENDED PCB LAYOUT

dr	Luo Weller	2014/01/10	projection 	MM 	size	A4	scale	1:1
eng	Luo Weller	2014/02/16			ecn no	-		
chr	-	-			rel level	Released		
appr	Pei-Ming Zheng	2014/02/16	product family	PwrBlade				
	title	24S + 9DCP + 4P R/A SOLDER RECEPTACLE		dwg no	51915-424		rev	A
www.fci.com	cat. no.	Product - Customer Drw			sheet 3 of 4			

PRODUCT NUMBER

51915-424__
NOTE 3

NOTES:

1. DIMENSIONS AND TOLERANCES ARE IN ACCORDANCE WITH ASME Y14.5M, 1994 UNLESS OTHERWISE SPECIFIED.

CONNECTOR NOTES:

- 2. HOUSING MATERIAL: UL 94 V-0 GLASS FILLED HIGH-TEMP THERMOPLASTIC
POWER CONTACT MATERIAL: COPPER ALLOY
SIGNAL PIN MATERIAL: COPPER ALLOY
- 3. SEE ITEM 5 & 6 IN PRINT 10064183 FOR PLATING SPEC OF 51915-424 AND 51915-424LF RESPECTIVELY.

4. MANUFACTURER'S NAME, DATE CODE AND OPTIONAL P/N TO APPEAR ON THIS SURFACE. THE MARK CAN BE OMITTED IF THERE IS NOT ENOUGH SPACE ON THIS SURFACE.

5. PRODUCT SPECIFICATION GS-12-149.
APPLICATION SPECIFICATION BUS-20-067.

6. PACKAGED IN TRAYS.

PCB NOTES:

7. ALL HOLE DIAMETERS ARE FINISHED HOLE SIZE.

8. MOUNTING HOLES, WHERE APPLICABLE, ARE UNPLATED.

9. $\varnothing 1.151 \pm 0.025$ DRILLED HOLES PLATED WITH
0.008 MIN SnPb OR Sn OVER 0.03
TO 0.08 Cu PLATING TO ACHIEVE
 $\varnothing 1.02 \pm .07$ HOLE.

10. CONNECTOR KEEP-OUT ZONE.

11. THE VOID CORING IN BETWEEN POWER MODULES, SIGNAL MODULES AND END MODULES ARE OPTIONAL AND THE SHAPE MAY BE DIFFERENT FOR OPTIMIZE THE MOLDING PROCESS. THE VOID CORING WILL NOT EFFECT TO PRODUCT FUNCTION.

dr	Luo Weller	2014/01/10	projection 	MM 	size	A4	scale	1:1	
eng	Luo Weller	2014/02/16			ecn no	-			
chr	-	-							
appr	Pei-Ming Zheng	2014/02/16	product family	PwrBlade	rel level	Released			
	title	24S + 9DCP + 4P R/A SOLDER RECEPTACLE			dwg no	51915-424		rev	A
www.fci.com	cat. no.	Product - Customer Drw			sheet 4 of 4				