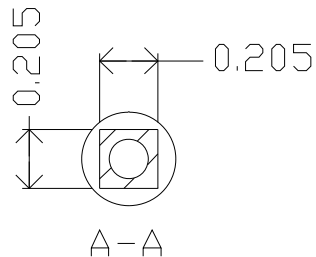
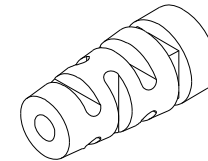
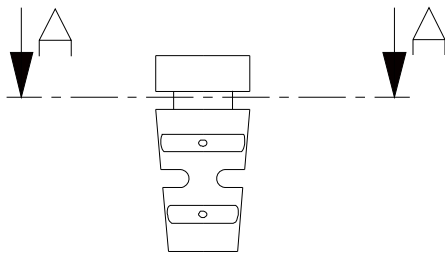
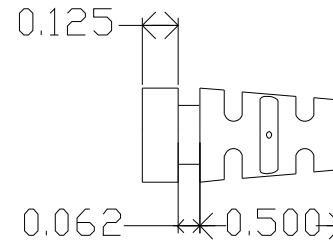
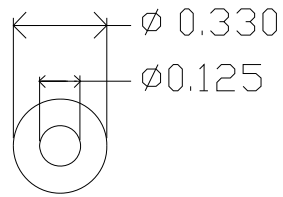


		REVISIONS	
ZONE	REV.	DESCRIPTION	DATE



MOLD MATERIAL, ISC P/N: 5000214, PVC, M1472, BLK, RoHS

Dimensions are subject to change.
 PROPRIETARY AND CONFIDENTIAL
 THE INFORMATION CONTAINED IN THIS DRAWING IS THE SOLE PROPERTY OF ISC ENGINEERING. ANY REPRODUCTION IN PART OR AS A WHOLE WITHOUT THE WRITTEN PERMISSION OF ISC ENGINEERING IS PROHIBITED.

		DIMENSIONS ARE IN INCHES	NAME	DATE	ISC Engineering 4351 Schaefer Ave, Chino, CA 91710 Ph: 909-596-3315 Fax: 909-596-3335 www.iscengineering.com www.overmoldtooling.com
		TOLERANCES: FRACTIONAL± ANGULAR: MACH± BEND± TWO PLACE DECIMAL± THREE PLACE DECIMAL±	DRAWN	R. FIERRO	
			CHECKED		
			ENG APPR.		
			MFG APPR.		
		MATERIAL --	QA		
		FINISH --	COMMENTS:		
NEXT ASSY USED ON			STRAIN RELIEF, ROUND		
APPLICATION	DO NOT SCALE DRAWING		1461080-125-B-205X205-330-0		
			SCALE: 2:1	WEIGHT:	SHEET 1 OF 1

