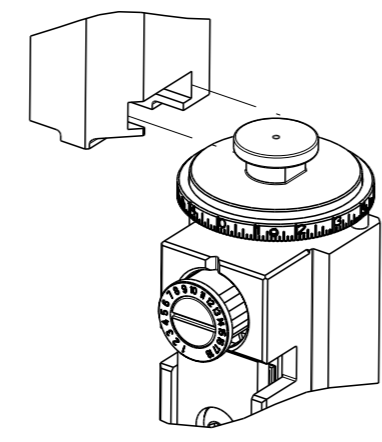


| PART NUMBER | REVISION | DESCRIPTION | FEED TYPE |
|-------------|----------|----------------------------------|------------|
| 2150424-1 | B | FINE CRIMP HEIGHT ADJUST | MECHANICAL |
| 2150424-2 | B | FINE CRIMP HEIGHT ADJUST | PNEUMATIC |
| 7-2150424-1 | B | MECHANICAL AND CRIMP TOOLING KIT | MECHANICAL |
| 7-2150424-2 | B | PNEUMATIC AND CRIMP TOOLING KIT | PNEUMATIC |
| 7-2150424-7 | A | CRIMP TOOLING KIT | - |

ATLANTIC VERSION TERMINATOR INTERFACE ADAPTER



| APPLICATOR DATA | | |
|--------------------------------------|----------------|------|
| CRIMP | SIZE | TYPE |
| WIRE | 2.03 mm [.080] | F |
| INSUL | 2.79 mm [.110] | OV |
| APPLICATOR INSTRUCTIONS 408-35043 | | |

| TERMINAL DATA: LEAR TERMINAL | | LEAR CRIMP SPECIFICATION | |
|--|-------------------------------|---|-------------------|
| TERMINAL NAME: RECEPTACLE F. ST. 4.8 X 0.8 | | | |
| WIRE STRIP LENGTH 3.80-4.56 mm [.150-.180 IN] | | INSULATION DIAMETER RANGE Ø1.40-2.10 mm [.055-.083 IN] | |
| TERMINAL APPLICATION SPECIFICATION | (A) LEAR DATA SHT 25313 Rev-7 | | - |
| | (B) LEAR DATA SHT 25314 Rev-6 | | - |
| TERMINALS APPLIED | | | |
| TE TERMINAL | LEAR TERMINAL | TE TERMINAL | LEAR TERMINAL |
| (A) 1949293-1 | (A) 25313.213.011 | (A) 1949293-7 | (A) 25313.417.328 |
| (A) 1949293-2 | (A) 25313.213.042 | (B) 1572523-1 | (B) 25314.123.204 |
| (A) 1949293-3 | (A) 25313.213.004 | (B) 1572523-2 | (B) 25314.123.211 |
| (A) 1949293-4 | (A) 25313.123.211 | (B) 1572523-3 | (B) 25314.213.004 |
| (A) 1949293-5 | (A) 25313.123.204 | (B) 1572523-4 | (B) 25314.417.031 |
| (A) 1949293-6 | (A) 25313.417.031 | | |

| WIRE SIZE | CRIMP HEIGHT mm [INCH] | CRIMP HEIGHT REFERENCE SETTING |
|-----------|-------------------------------|--------------------------------|
| 1.00mm2 | 1.40 +/- 0.05 [.055 +/- .002] | 8.2 |
| 0.75mm2 | 1.30 +/- 0.05 [.051 +/- .002] | 9.2 |
| 0.50mm2 | 1.25 +/- 0.05 [.049 +/- .002] | 9.7 |

- 1 RECOMMENDED SPARE PARTS
- 2 REFER TO SUPPLIED INSTRUCTION SHEET FOR CLEANING, LUBRICATION AND STORAGE OF APPLICATOR.
- 3 APPLY PART NUMBER 1-23419-5 LOCTITE TO THREADS OF ITEM 180. APPLY PART NUMBER 2-23419-6 LOCTITE TO THREADS OF ITEM 242.
- 4 CRIMP HEIGHT REFERENCE SETTING WAS THE SETTING USED WHEN THE APPLICATOR WAS QUALIFIED AT THE FACTORY. ADJUSTMENT MAY BE NECESSARY WHEN RUNNING APPLICATOR IN THE FIELD.
- 5. UNLESS SPECIFIED OTHERWISE TORQUE VALUES SHALL BE USED PER DOCUMENT, 101-35000.
- 6 TERMINAL LUBRICANT IS RECOMMENDED.

***WARNING**
ON INSTALLATION, SET WIRE DISC TO CRIMP HEIGHT REFERENCE SETTING FOR LARGEST WIRE SIZE. CRIMP HEIGHT REFERENCE SETTINGS GREATER THAN THE VALUE SHOWN MAY CAUSE DAMAGE TO THE CRIMP TOOLING, REFER TO THE INSTRUCTION SHEET FOR PROPER SETUP AND ADJUSTMENTS.

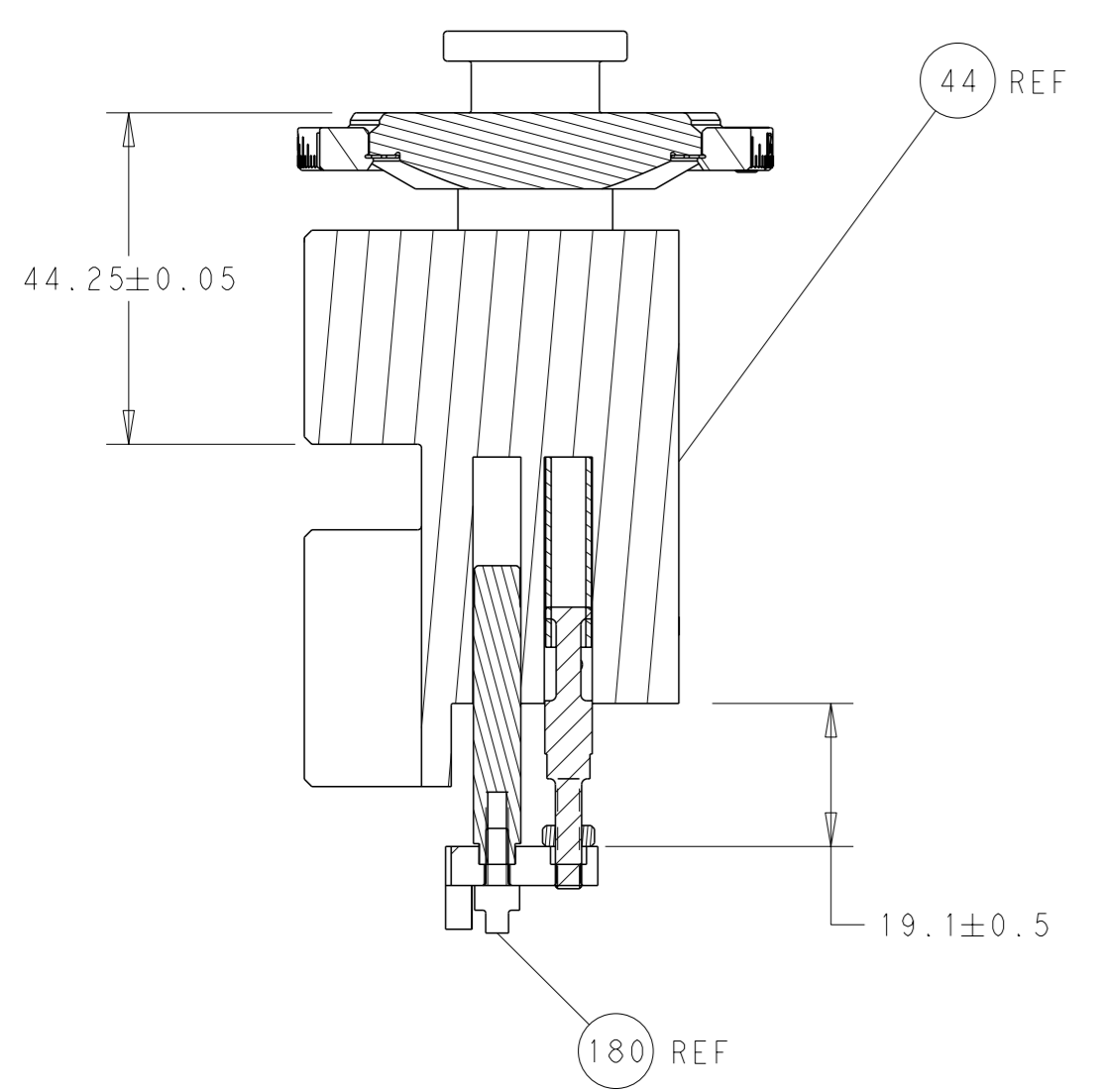
ATLANTIC VERSION
Shown on sheets 1 of 4 & 2 of 4
(Pacific version shown on sheets 3 of 4 & 4 of 4)

| LOC | DIST | REVISIONS | | | | | |
|-----|------|-----------|-----|---------------|-----------|-----|------|
| | | P | LYR | DESCRIPTION | DATE | OWN | APVD |
| A | 66 | A | | RELEASED | 10APR2014 | KH | UG |
| | | B | | ECR-20-003186 | 04MAR2020 | FZ | TE |

| | | | | | | | | |
|---|-----|-----|-----|-----|-------------|-------------------------------------|-------------|---------|
| - | 1 | - | 1 | - | 2119641-1 | FEED CAM, AIR FEED | 248 | |
| - | 1 | 1 | 1 | 1 | 2119082-4 | CAM, SNAIL, INSULATION ADJUSTMENT | 244 | |
| - | 1 | 1 | 1 | 1 | 2079764-1 | WASHER, WAVE SPRING, CREST-TO-CREST | 243 | |
| 3 | - | 1 | 1 | 1 | 2119083-1 | RETAINER, INSULATION DIAL | 242 | |
| - | - | 1 | - | 1 | 2119580-1 | MECHANICAL FEED ASSEMBLY | 239 | |
| - | 1 | - | 1 | - | 2844940-3 | AIR FEED MODULE | 238 | |
| - | 1 | 1 | 1 | 1 | 1-18028-0 | WASHER, FLAT, REG M8 | 192 | |
| 3 | - | 1 | 1 | 1 | 1-1976055-0 | STANDOFF, HOLD-DOWN | 180 | |
| - | 1 | 1 | 1 | 1 | 6-993111-6 | PIN, SLOTTED SPRING 3.0 X 14.0 | 177 | |
| - | 1 | 1 | 1 | 1 | 8-22280-7 | SPRING, COMPRESSION | 176 | |
| - | 1 | 1 | 1 | 1 | 1752353-2 | GUIDE PIN, HOLDDOWN | 175 | |
| - | 1 | 1 | 1 | 1 | 1901680-2 | GUIDE PIN, HOLDDOWN | 174 | |
| - | REF | REF | REF | REF | 994970-2 | COUNTER, MAGNETIC | 164 | |
| 6 | - | 1 | 1 | 1 | 2119955-2 | ASSY, LUBRICATOR, END FEED | 84 | |
| - | 1 | 1 | 1 | 1 | 455888-5 | SPACER, CRIMPER | 82 | |
| - | 1 | 1 | 1 | 1 | 1803607-4 | DOCUMENTATION PACKAGE | 71 | |
| - | 2 | 2 | 2 | 2 | 2-18032-2 | SCR, SET, FLT PNT, M3 X 10.0 | 70 | |
| - | 1 | 1 | 1 | 1 | 2119740-1 | TAG, IDENTIFICATION | 67 | |
| - | 2 | 2 | 2 | 2 | 2168078-1 | SCREW, DRIVE, RH, RoHS, 2 x .188 | 66 | |
| - | 1 | 1 | 1 | 1 | 1901681-5 | HOLDDOWN, TERMINAL | 65 | |
| - | 2 | 2 | 2 | 2 | 2168400-5 | SHCS, LOW HEAD, RoHS, M4 X 20 | 64 | |
| - | 1 | 1 | 1 | 1 | 2168083-2 | SCR, SKT HD CAP, RoHS, M4 X 8.0 | 60 | |
| - | 1 | 1 | 1 | 1 | 5-18022-5 | SCR, HEX HD CAP, M4 X 6.0 | 59 | |
| - | - | 1 | - | 1 | 2063961-1 | FEED FINGER | 58 | |
| - | 3 | 3 | 3 | 3 | 2168400-4 | SHCS, LOW HEAD, RoHS, M4 X 8 | 57 | |
| - | 2 | 2 | 2 | 2 | 1-2168083-0 | SCR, SKT HD CAP, RoHS, M4 X 10 | 56 | |
| - | 2 | 2 | 2 | 2 | 5018030-1 | NUT, HEX, REG, RoHS, M3 | 54 | |
| - | 2 | 2 | 2 | 2 | 986965-8 | NUT, LOCK, HEX, TORQUE (M4) | 53 | |
| - | 1 | 1 | 1 | 1 | 1-5018030-0 | NUT, HEX, REG, RoHS, M3.5 | 52 | |
| - | 1 | - | 1 | - | 2063961-9 | FEED FINGER | 51 | |
| - | 1 | 2 | 1 | 2 | 18023-9 | SCR, SKT HD CAP M4 X 6.0 | 49 | |
| - | - | 1 | - | 1 | 2119652-1 | FEED CAM, PRE FEED | 48 | |
| - | - | 1 | - | 1 | 2119653-1 | FEED CAM, POST FEED | 47 | |
| - | 1 | 1 | 1 | 1 | 2119655-5 | APPLICATOR BASIC ASSEMBLY, EF | 46 | |
| - | 1 | 1 | 1 | 1 | 1803517-1 | RAM ASSEMBLY, EF ATLANTIC | 44 | |
| - | 1 | 1 | 1 | 1 | 1803602-1 | SCR, BHSC, RoHS (M8 X 25) | 41 | |
| - | 7 | 7 | 7 | 7 | 1-18028-2 | WASHER, FLAT, REG M4 | 33 | |
| - | 2 | 2 | 2 | 2 | 2168083-9 | SCR, SKT HD CAP, RoHS, M4 X 20 | 31 | |
| - | 2 | 2 | 2 | 2 | 2168083-2 | SCR, SKT HD CAP, RoHS, M4 X 8.0 | 29 | |
| - | 1 | 1 | 1 | 1 | 240639-1 | STRIPPER (MACHINING) | 27 | |
| - | 2 | 2 | 2 | 2 | 1-2168083-5 | SCR, SKT HD CAP, RoHS, M4 X 30 | 25 | |
| - | 1 | 1 | 1 | 1 | 1752371-5 | PLATE, STRIP GUIDE | 24 | |
| - | 1 | 1 | 1 | 1 | 240825-1 | PLATE, STRIP HOLD DOWN | 23 | |
| - | 2 | 2 | 2 | 2 | 2-22281-3 | SPRING, COMPRESSION | 22 | |
| - | 1 | 1 | 1 | 1 | 1803292-4 | DRAG | 20 | |
| - | 2 | 2 | 2 | 2 | 1901259-4 | GUIDE, LOWER STRIP | 18 | |
| - | 4 | 4 | 4 | 4 | 1-2079383-1 | SCR, BHSC, RoHS (M6 X 12) | 17 | |
| - | 1 | 1 | 1 | 1 | 1752360-1 | SPACER, HOLD-DOWN | 13 | |
| - | 1 | 1 | 1 | 1 | 240644-1 | PLATE, REAR SHEAR | 11 | |
| - | - | - | - | - | - | - | 10 | |
| - | 1 | 1 | 1 | 1 | 690482-5 | PLATE, FRONT SHEAR | 9 | |
| 1 | 2 | 2 | 1 | 1 | 1-1633384-3 | ANVIL, COMBINATION | 8 | |
| 1 | - | 1 | 1 | 1 | 2217206-7 | BLADE, SLUG | 7 | |
| - | - | - | - | - | - | - | 6 | |
| - | 1 | 1 | 1 | 1 | 4-240641-1 | SPACER | 5 | |
| - | 1 | 1 | 1 | 1 | 238011-2 | BLOCK, CRIMPER SPACER | 4 | |
| 1 | 2 | 2 | 1 | 1 | 1633963-1 | CRIMPER, INSULATION OVERLAP PREMIUM | 3 | |
| - | 1 | 1 | 1 | 1 | 455888-3 | SPACER, CRIMPER | 2 | |
| 1 | 2 | 2 | 1 | 1 | 3-456405-7 | CRIMPER, WIRE PREMIUM | 1 | |
| - | 77 | 72 | 71 | 2 | -1 | PART NO | DESCRIPTION | ITEM NO |

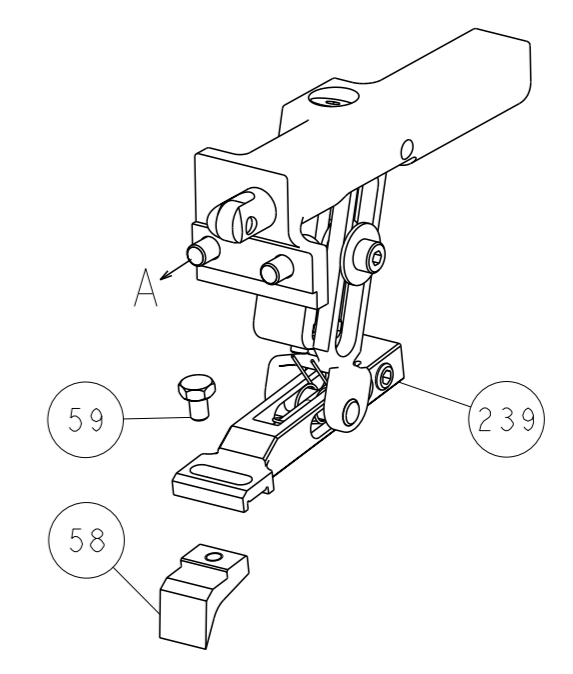
| DIMENSIONS: | | TOLERANCES UNLESS OTHERWISE SPECIFIED: | | APPROVED: | | NAME: | |
|-------------|---------|--|---------|-----------|---------|-------|--------|
| mm | 0 PLC ± | 1 PLC ± | 2 PLC ± | 3 PLC ± | 4 PLC ± | APVD | NAME |
| | ANGLES | FINISH | | | | | |
| MATERIAL | | | | WEIGHT | | SCALE | SHEET |
| | | | | | | 1:1 | 1 OF 4 |

| LOC | | DIST | | REVISIONS | | | |
|-----|----|------|-----|-------------|------|-----|------|
| A | 66 | P | LYR | DESCRIPTION | DATE | OWN | APVD |
| | | - | | SEE SHEET 1 | | | |

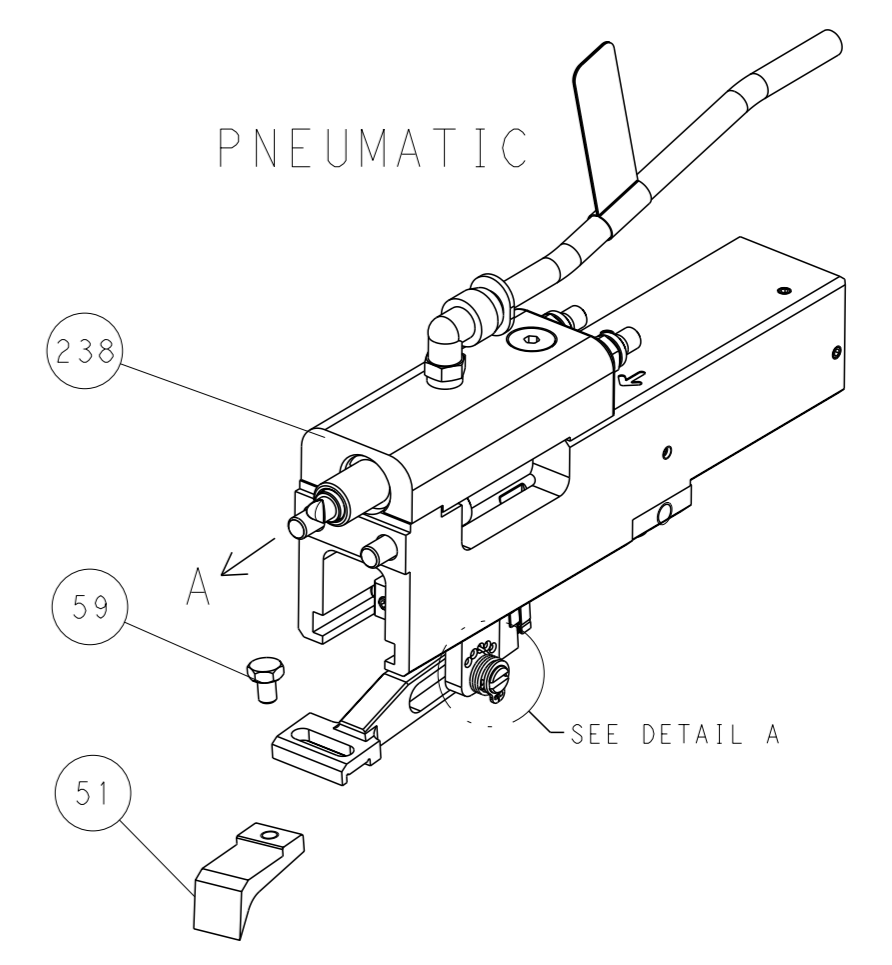


RAM AND HOLDDOWN SET-UP

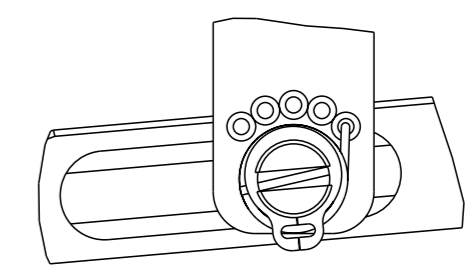
FEED TYPE
MECHANICAL



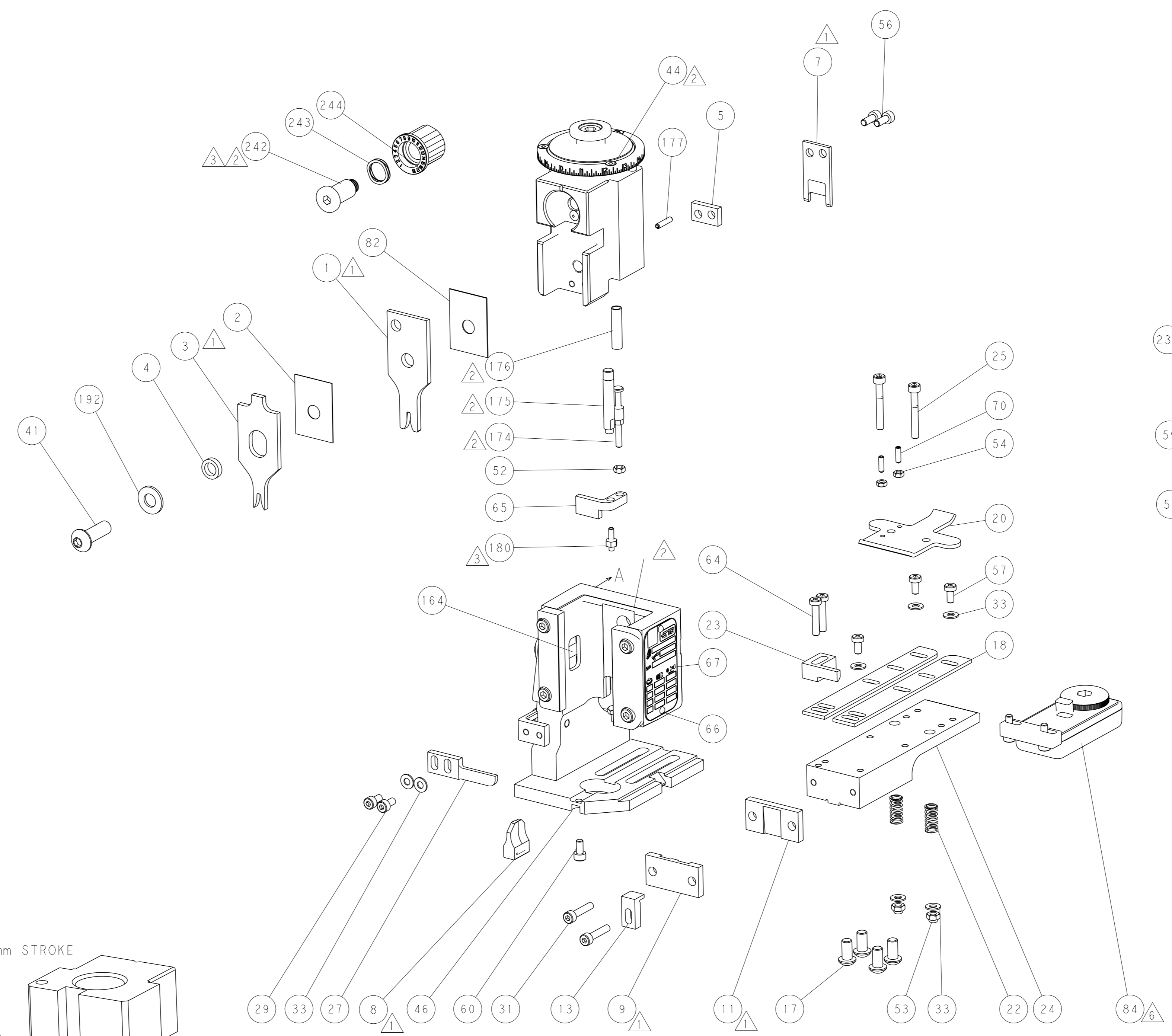
PNEUMATIC



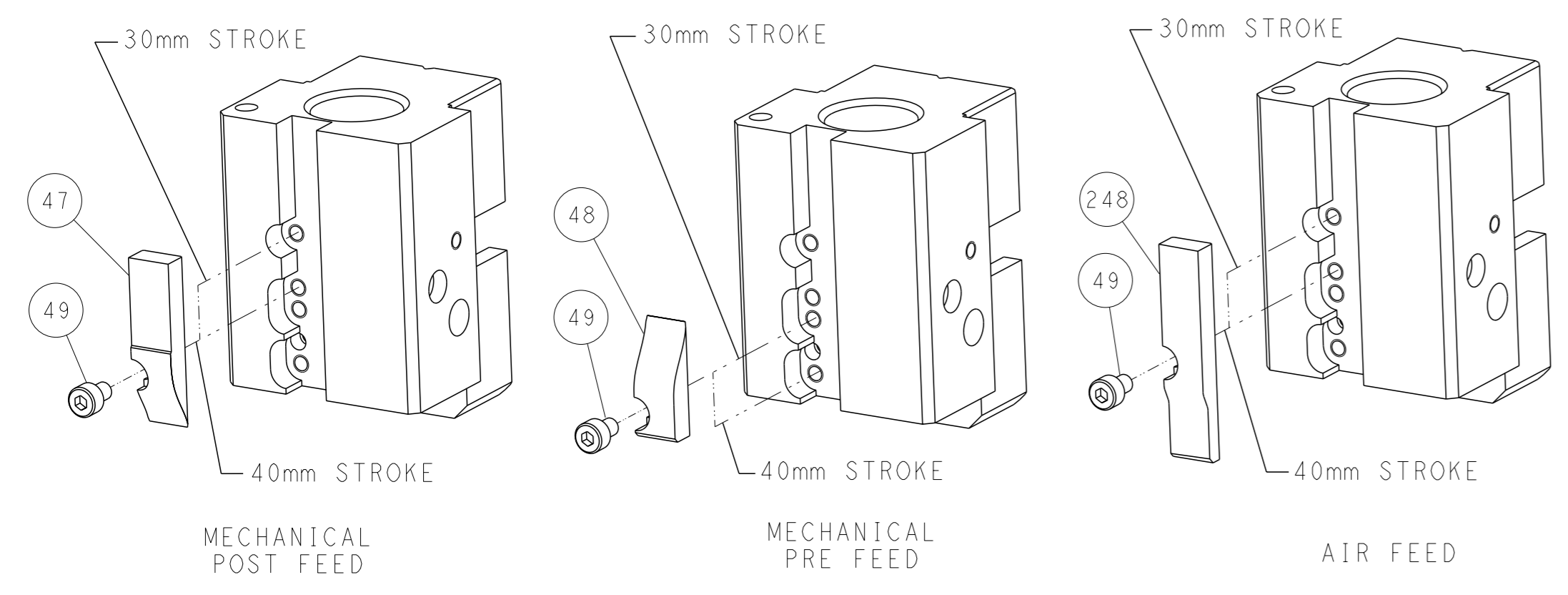
FEED SPRING
SETTING POSITION



DETAIL A



CAM POSITIONS

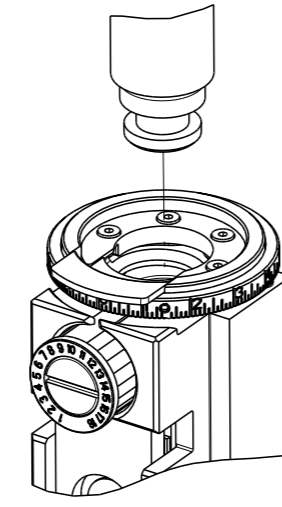


ATLANTIC VERSION
 Shown on sheets 1 of 4 & 2 of 4
 (Pacific version shown on sheets 3 of 4 & 4 of 4)

| | | | | |
|--|--|---|-------------------------------------|--|
| <small>THIS DRAWING IS UNPUBLISHED. RELEASED FOR PUBLICATION 20 BY TYCO ELECTRONICS CORPORATION. ALL RIGHTS RESERVED.</small> | | OWN: K. HUANG CHK: L. ZHANG APVD: J. GUO | Z1MAR2014 Z1MAR2014 Z1MAR2014 | TE Connectivity Harrisburg, PA 17105-3608 |
| DIMENSIONS: mm TOLERANCES UNLESS OTHERWISE SPECIFIED: 0 PLC ± 1 PLC ± 2 PLC ± 3 PLC ± 4 PLC ± ANGLES FINISH ± | | NAME: Ocean End Feed Applicator SIZE: A1 CAGE CODE: 00779 DRAWING NO: 2150424 WEIGHT: - SCALE: 1:1 | SHEET 2 OF 4 REV B | RESTRICTED TO: - |
| Customer Accessible Production Drawing | | | | |

| 8 | 7 | 6 | 5 | 4 | 3 | 2 | 1 |
|--|----------|--------------------------|------------|----|---|---|---|
| THIS DRAWING IS UNPUBLISHED. | | RELEASED FOR PUBLICATION | | 20 | | | |
| COPYRIGHT 20 BY TYCO ELECTRONICS CORPORATION. ALL RIGHTS RESERVED. | | | | | | | |
| PART NUMBER | REVISION | DESCRIPTION | FEED TYPE | | | | |
| 2-2150424-1 | B | FINE CRIMP HEIGHT ADJUST | MECHANICAL | | | | |
| 2-2150424-2 | B | FINE CRIMP HEIGHT ADJUST | PNEUMATIC | | | | |
| 7-2150424-7 | A | CRIMP TOOLING KIT | - | | | | |

PACIFIC VERSION TERMINATOR INTERFACE ADAPTER



| APPLICATOR DATA | | |
|--------------------------------------|----------------|------|
| CRIMP | SIZE | TYPE |
| WIRE | 2.03 mm (.080) | F |
| INSUL | 2.79 mm (.110) | OV |
| APPLICATOR INSTRUCTIONS 408-35043 | | |

| | | | |
|--|------------------------------|---|---|
| TERMINAL DATA: LEAR TERMINAL | | LEAR CRIMP SPECIFICATION | |
| TERMINAL NAME: RECEPTACLE F. ST. 4.8 X 0.8 | | | |
| WIRE STRIP LENGTH 3.80-4.56 mm (.150-.180 IN) | | INSULATION DIAMETER RANGE Ø1.40-2.10 mm (.055-.083 IN) | |
| TERMINAL APPLICATION SPECIFICATION | (A)LEAR DATA SHT 25313 Rev-7 | - | - |
| | (B)LEAR DATA SHT 25314 Rev-6 | - | - |

| TERMINALS APPLIED | | | |
|-------------------|-------------------|---------------|-------------------|
| TE TERMINAL | LEAR TERMINAL | TE TERMINAL | LEAR TERMINAL |
| (A) 1949293-1 | (A) 25313.213.011 | (A) 1949293-7 | (A) 25313.417.328 |
| (A) 1949293-2 | (A) 25313.213.042 | (B) 1572523-1 | (B) 25314.123.204 |
| (A) 1949293-3 | (A) 25313.213.004 | (B) 1572523-2 | (B) 25314.123.211 |
| (A) 1949293-4 | (A) 25313.123.211 | (B) 1572523-3 | (B) 25314.213.004 |
| (A) 1949293-5 | (A) 25313.123.204 | (B) 1572523-4 | (B) 25314.417.031 |
| (A) 1949293-6 | (A) 25313.417.031 | | |

| WIRE SIZE | CRIMP HEIGHT mm [INCH] | CRIMP HEIGHT REFERENCE SETTING |
|---------------------|--------------------------------|--------------------------------|
| 1.00mm ² | 1.40 +/- 0.05 [0.055 +/- .002] | 8.2 |
| 0.75mm ² | 1.30 +/- 0.05 [0.051 +/- .002] | 9.2 |
| 0.50mm ² | 1.25 +/- 0.05 [0.049 +/- .002] | 9.7 |

- RECOMMENDED SPARE PARTS
- REFER TO SUPPLIED INSTRUCTION SHEET FOR CLEANING, LUBRICATION AND STORAGE OF APPLICATOR.
- APPLY PART NUMBER 1-23419-5 LOCTITE TO THREADS OF ITEM 180. APPLY PART NUMBER 2-23419-6 LOCTITE TO THREADS OF ITEM 242.
- CRIMP HEIGHT REFERENCE SETTING WAS THE SETTING USED WHEN THE APPLICATOR WAS QUALIFIED AT THE FACTORY. ADJUSTMENT MAY BE NECESSARY WHEN RUNNING APPLICATOR IN THE FIELD.
- 5. UNLESS SPECIFIED OTHERWISE TORQUE VALUES SHALL BE USED PER DOCUMENT, 101-35000.
- TERMINAL LUBRICANT IS RECOMMENDED.

***WARNING**
ON INSTALLATION, SET WIRE DISC TO CRIMP HEIGHT REFERENCE SETTING FOR LARGEST WIRE SIZE. CRIMP HEIGHT REFERENCE SETTINGS GREATER THAN THE VALUE SHOWN MAY CAUSE DAMAGE TO THE CRIMP TOOLING, REFER TO THE INSTRUCTION SHEET FOR PROPER SETUP AND ADJUSTMENTS.

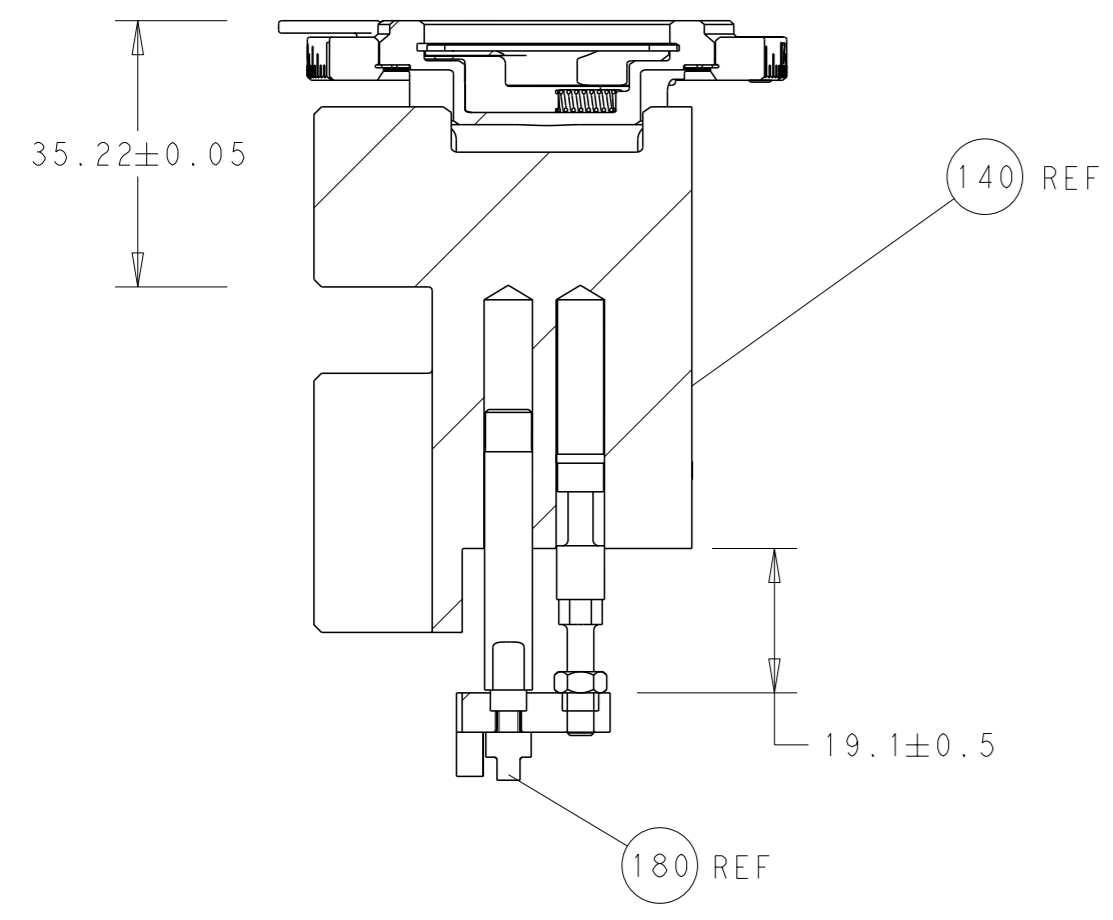
PACIFIC VERSION
Shown on sheets 3 of 4 & 4 of 4
(Atlantic version shown on sheets 1 of 4 & 2 of 4)

| LOC | DIST | REVISIONS | | | | | |
|-----|------|-----------|-----|-------------|------|-----|------|
| A | 66 | P | LY# | DESCRIPTION | DATE | OWN | APVD |
| | | - | | SEE SHEET 1 | - | - | - |

| | | | | | |
|---|-----|-----|-------------|-------------------------------------|---------|
| - | 1 | 1 | 2119082-4 | CAM, SNAIL, INSULATION ADJUSTMENT | 244 |
| - | 1 | 1 | 2079764-1 | WASHER, WAVE SPRING, CREST-TO-CREST | 243 |
| - | 1 | 1 | 2119083-1 | RETAINER, INSULATION DIAL | 242 |
| - | - | 1 | 2119580-1 | MECHANICAL FEED ASSEMBLY | 239 |
| - | 1 | - | 2844940-3 | AIR FEED MODULE | 238 |
| - | 1 | 1 | 1-18028-0 | WASHER, FLAT, REG M8 | 192 |
| - | 4 | 4 | 2079383-9 | SCR, BHSC, RoHS (M6 X 20) | 186 |
| - | 1 | 1 | 1-1976055-0 | STANDOFF, HOLD-DOWN | 180 |
| - | 1 | 1 | 6-993111-6 | PIN, SLOTTED SPRING 3.0 X 14.0 | 177 |
| - | 1 | 1 | 8-22280-7 | SPRING, COMPRESSION | 176 |
| - | 1 | 1 | 1752353-2 | GUIDE PIN, HOLDDOWN | 175 |
| - | 1 | 1 | 1901680-2 | GUIDE PIN, HOLDDOWN | 174 |
| - | REF | REF | 994970-2 | COUNTER, MAGNETIC | 164 |
| - | 1 | - | 2119641-2 | FEED CAM, AIR FEED | 152 |
| - | 1 | 1 | 2168083-8 | SCR, SKT HD CAP, RoHS, M4 X 16 | 144 |
| - | - | 1 | 2119653-2 | FEED CAM, POST FEED | 142 |
| - | 1 | 1 | 2119655-6 | APPLICATOR BASIC ASSEMBLY, EF | 141 |
| - | 1 | 1 | 1803518-1 | RAM ASSEMBLY, EF PACIFIC | 140 |
| - | 1 | 1 | 2119955-2 | ASSY, LUBRICATOR, END FEED | 84 |
| - | 1 | 1 | 455888-5 | SPACER, CRIMPER | 82 |
| - | 1 | 1 | 1803607-4 | DOCUMENTATION PACKAGE | 71 |
| - | 2 | 2 | 2-18032-2 | SCR, SET, FLT PNT, M3 X 10.0 | 70 |
| - | 1 | 1 | 2119740-1 | TAG, IDENTIFICATION | 67 |
| - | 2 | 2 | 2168078-1 | SCREW, DRIVE, RH, RoHS, 2 x .188 | 66 |
| - | 1 | 1 | 1901681-5 | HOLDDOWN, TERMINAL | 65 |
| - | 2 | 2 | 2168400-5 | SHCS, LOW HEAD, RoHS, M4 X 20 | 64 |
| - | 1 | 1 | 5-18022-5 | SCR, HEX HD CAP, M4 X 6.0 | 59 |
| - | - | 1 | 2063961-1 | FEED FINGER | 58 |
| - | 3 | 3 | 2168400-4 | SHCS, LOW HEAD, RoHS, M4 X 8 | 57 |
| - | 2 | 2 | 1-2168083-0 | SCR, SKT HD CAP, RoHS, M4 X 10 | 56 |
| - | 2 | 2 | 5018030-1 | NUT, HEX, REG, RoHS, M3 | 54 |
| - | 2 | 2 | 986965-8 | NUT, LOCK, HEX, TORQUE (M4) | 53 |
| - | 1 | 1 | 1-5018030-0 | NUT, HEX, REG, RoHS, M3.5 | 52 |
| - | 1 | - | 2063961-9 | FEED FINGER | 51 |
| - | 1 | 2 | 18023-9 | SCR, SKT HD CAP M4 X 6.0 | 49 |
| - | - | 1 | 2119652-1 | FEED CAM, PRE FEED | 48 |
| - | 1 | 1 | 1803602-1 | SCR, BHSC, RoHS (M8 X 25) | 41 |
| - | 7 | 7 | 1-18028-2 | WASHER, FLAT, REG M4 | 33 |
| - | 2 | 2 | 2168083-9 | SCR, SKT HD CAP, RoHS, M4 X 20 | 31 |
| - | 2 | 2 | 2168083-2 | SCR, SKT HD CAP, RoHS, M4 X 8.0 | 29 |
| - | 1 | 1 | 240639-1 | STRIPPER (MACHINING) | 27 |
| - | 2 | 2 | 1-2168083-5 | SCR, SKT HD CAP, RoHS, M4 X 30 | 25 |
| - | 1 | 1 | 1752371-5 | PLATE, STRIP GUIDE | 24 |
| - | 1 | 1 | 240825-1 | PLATE, STRIP HOLD DOWN | 23 |
| - | 2 | 2 | 2-22281-3 | SPRING, COMPRESSION | 22 |
| - | 1 | 1 | 1803292-4 | DRAG | 20 |
| - | 2 | 2 | 1901259-4 | GUIDE, LOWER STRIP | 18 |
| - | 1 | 1 | 1752360-1 | SPACER, HOLD-DOWN | 13 |
| - | 1 | 1 | 240644-1 | PLATE, REAR SHEAR | 11 |
| - | - | - | - | - | 10 |
| - | 1 | 1 | 690482-5 | PLATE, FRONT SHEAR | 9 |
| - | 1 | 1 | 1-1633384-3 | ANVIL, COMBINATION | 8 |
| - | 1 | 1 | 2217206-7 | BLADE, SLUG | 7 |
| - | - | - | - | - | 6 |
| - | 1 | 1 | 4-240641-1 | SPACER | 5 |
| - | 1 | 1 | 238011-2 | BLOCK, CRIMPER SPACER | 4 |
| - | 1 | 1 | 1633963-1 | CRIMPER, INSULATION OVERLAP PREMIUM | 3 |
| - | 1 | 1 | 455888-3 | SPACER, CRIMPER | 2 |
| - | 1 | 1 | 3-456405-7 | CRIMPER, WIRE PREMIUM | 1 |
| - | 77 | 22 | 21 | PART NO | ITEM NO |

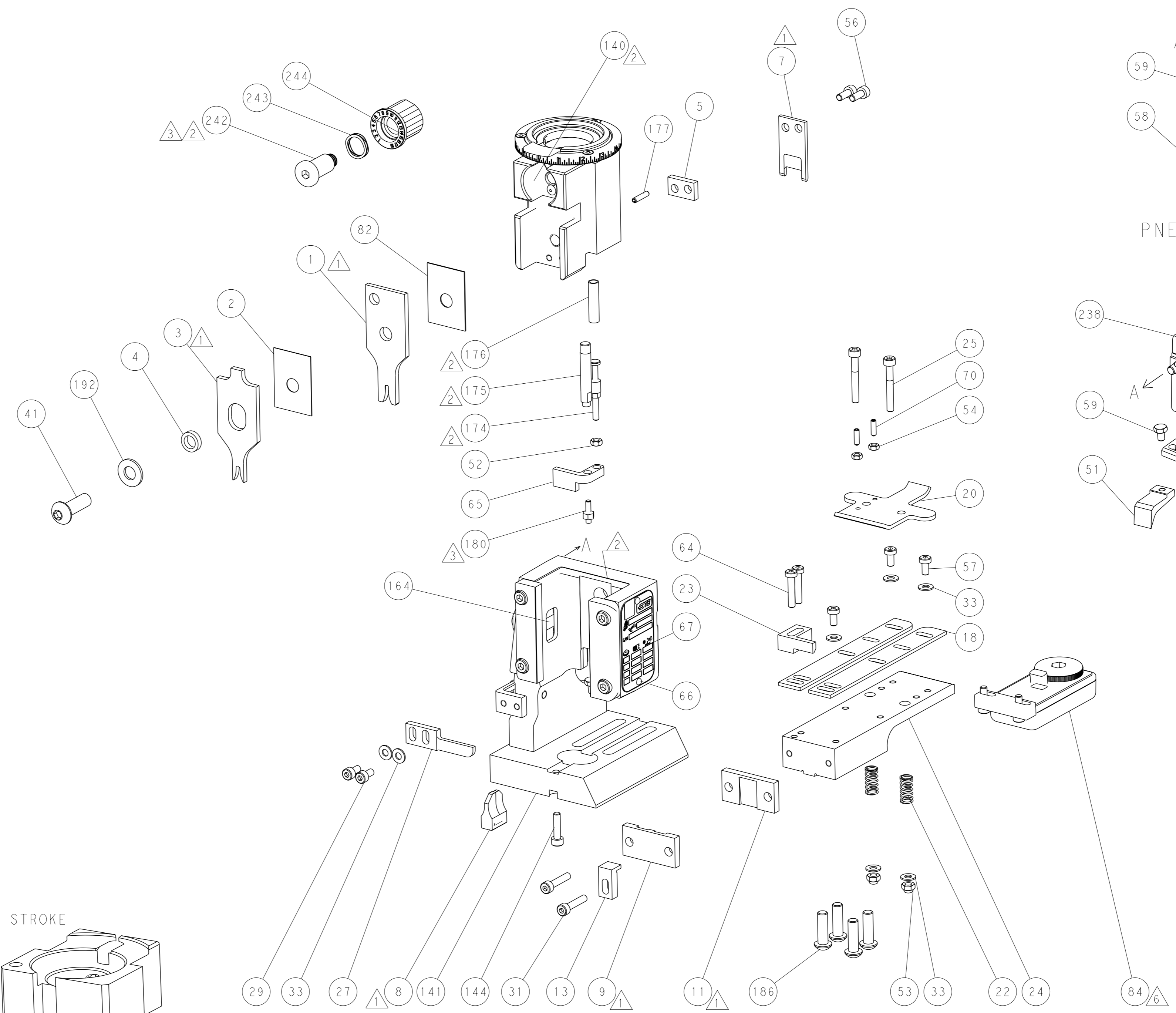
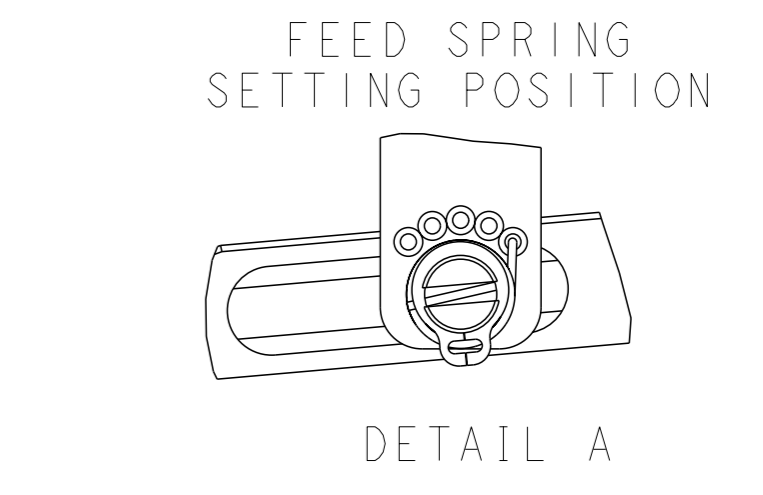
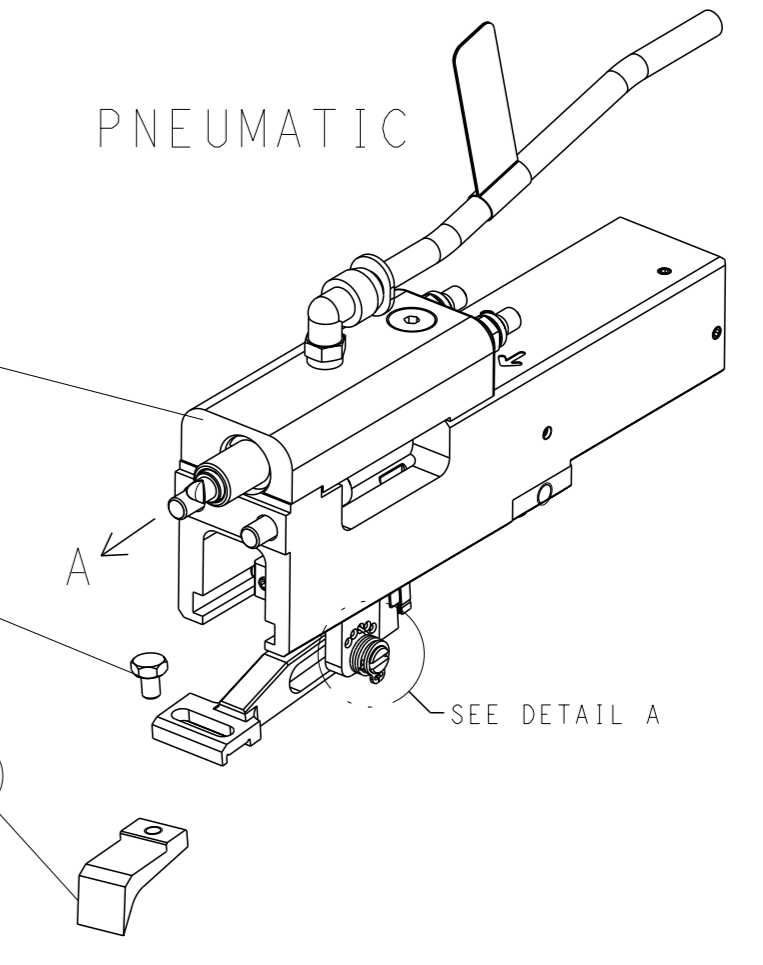
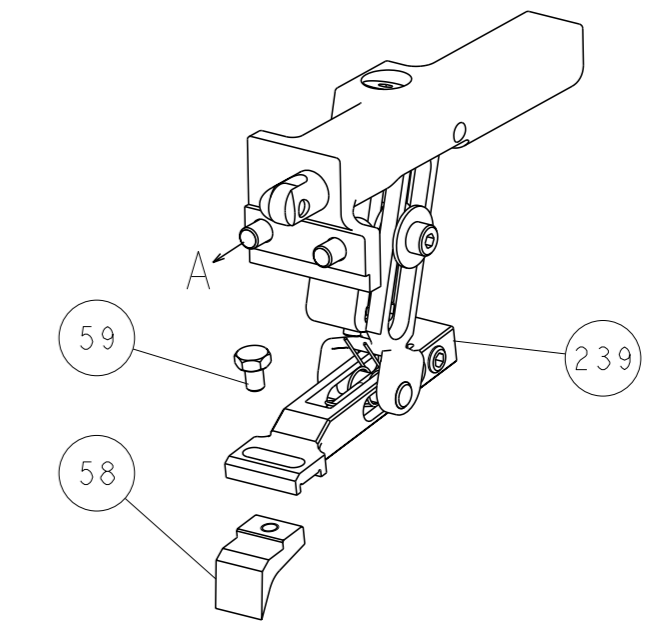
| | | | |
|---|--|--|--|
| <small>THE DRAWING IS CONTROLLED AND THE CONTROL AND REVISIONS INFORMATION SHOULD BE CONTACTED FOR THE LATEST REVISION.</small> | | DWG: H. HUANG 21MAR2014 CHK: L. ZHANG 21MAR2014 APVD: J. GUO 21MAR2014 | TE Connectivity Harrisburg, PA 17105-3608 |
| DIMENSIONS: mm | | TOLERANCES UNLESS OTHERWISE SPECIFIED: 0 PLC ± 1 PLC ± 2 PLC ± 3 PLC ± 4 PLC ± ANGLES FINISH ± | NAME: Ocean End Feed Applicator SIZE: A1 CAGE CODE: 00779 DRAWING NO: 2150424 RESTRICTED TO: - |
| MATERIAL: - | | WEIGHT: - | SCALE: 1:1 SHEET: 3 of 4 REV: B |

| LOC | DIST | REVISIONS | | | |
|-----|-------------|-----------|------|-----|------|
| A | 66 | REV | DATE | OWN | APVD |
| - | SEE SHEET 1 | - | - | - | - |

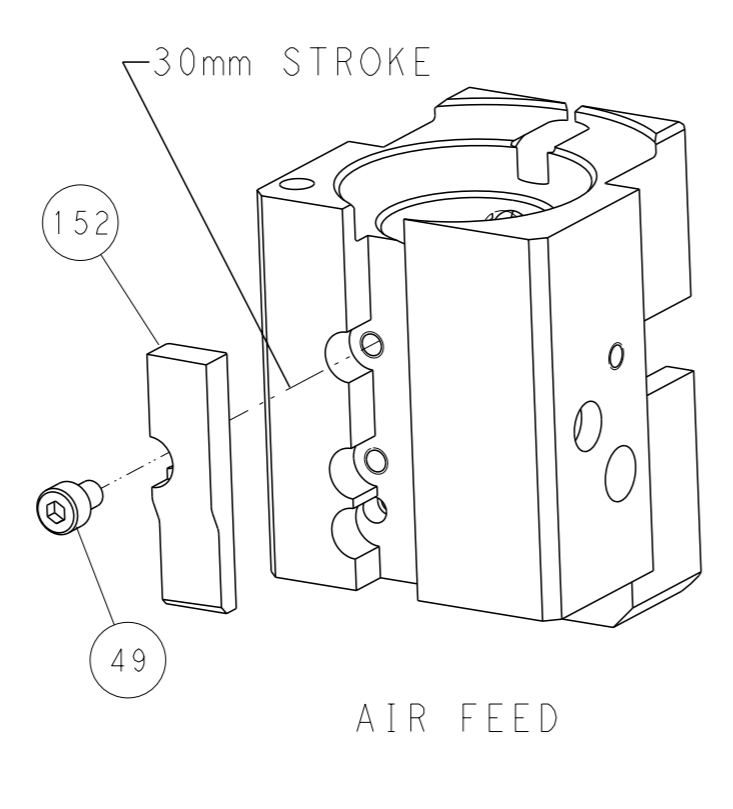
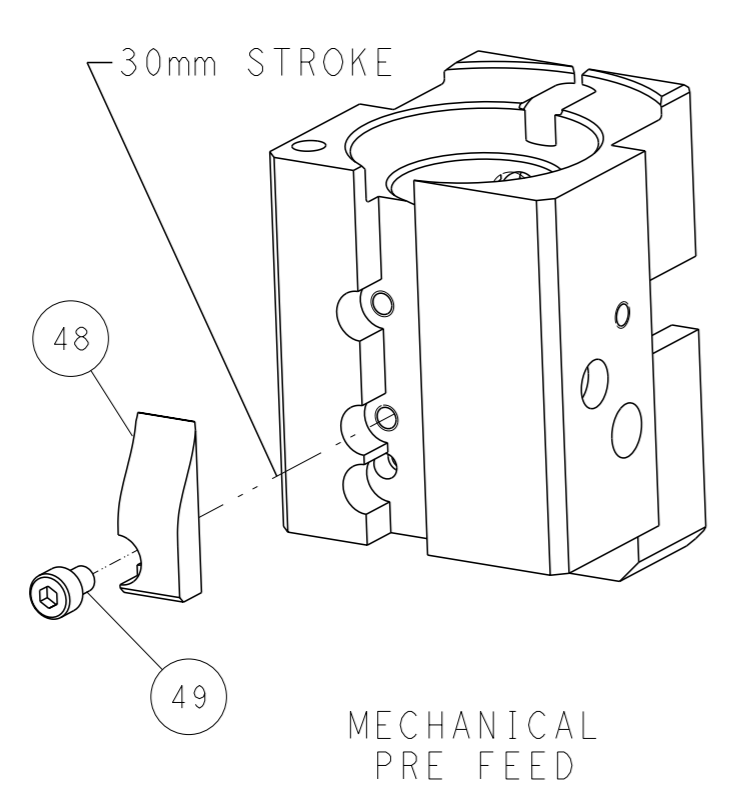
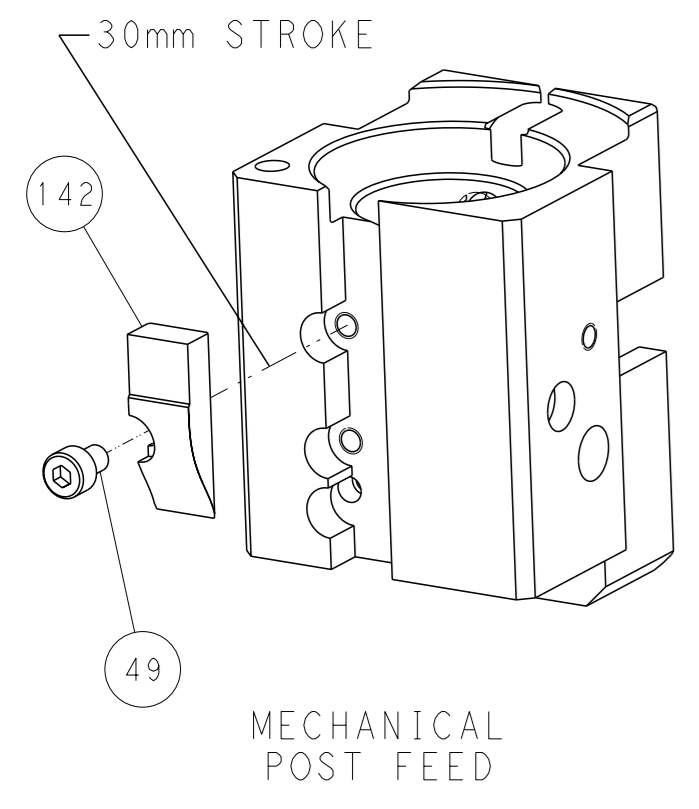


RAM AND HOLDDOWN SET-UP

FEED TYPE
MECHANICAL



CAM POSITIONS



PACIFIC VERSION
 Shown on sheets 3 of 4 & 4 of 4
 (Atlantic version shown on sheets 1 of 4 & 2 of 4)

| | | | | | | | | | |
|-----------------------|--|--|--|--|--|--|--|---|--|
| DIMENSIONS: mm | | TOLERANCES UNLESS OTHERWISE SPECIFIED: 0 PLC ± 1 PLC ± 2 PLC ± 3 PLC ± 4 PLC ± ANGLES FINISH * | | OWN: K. HUANG CHK: L. ZHANG APVD: J. GUO PRODUCT SPEC APPLICATION SPEC WEIGHT Customer Accessible Production Drawing | | Z1MAR2014 Z1MAR2014 Z1MAR2014 NAME: Ocean End Feed Applicator SIZE: A1 CAGE CODE: 00779 DRAWING NO: C=2150424 SCALE: 1:1 SHEET: 4 of 4 REV: B | | STE TE Connectivity Harrisburg, PA 17105-3608 RESTRICTED TO | |
|-----------------------|--|--|--|--|--|--|--|---|--|