

PART NUMBER	REV	FIRST USED	TERMINATOR	FEED TYPE	DESCRIPTION
1339606-1	A	-	BENCH & LEADMAKER	MECH POST FEED	HD-I APPLICATOR
7-1339606-1	A	-	BENCH & LEADMAKER	MECH POST FEED	-1 AND SPARE PARTS
7-1339606-7	A	-	-	-	SPARE PARTS KIT

**CRIMP DATA** JST TERMINAL CUST CRIMP SPECS

TERMINAL NAME: STO SERIES (TAB-ON-STRAIGHT)

CRIMP	SIZE	TYPE	RANGE
WIRE	3.56 [.140 IN]	F	2.50-6.00mm <sup>2</sup> or 14-10 AWG
INSUL	5.59 [.220 IN]	0	3.90-5.10 [.154-.201 IN]
WIRE STRIP LENGTH	APPL INSTRUCTION		
5.80-6.60 [.228-.260 IN]	408-8323		

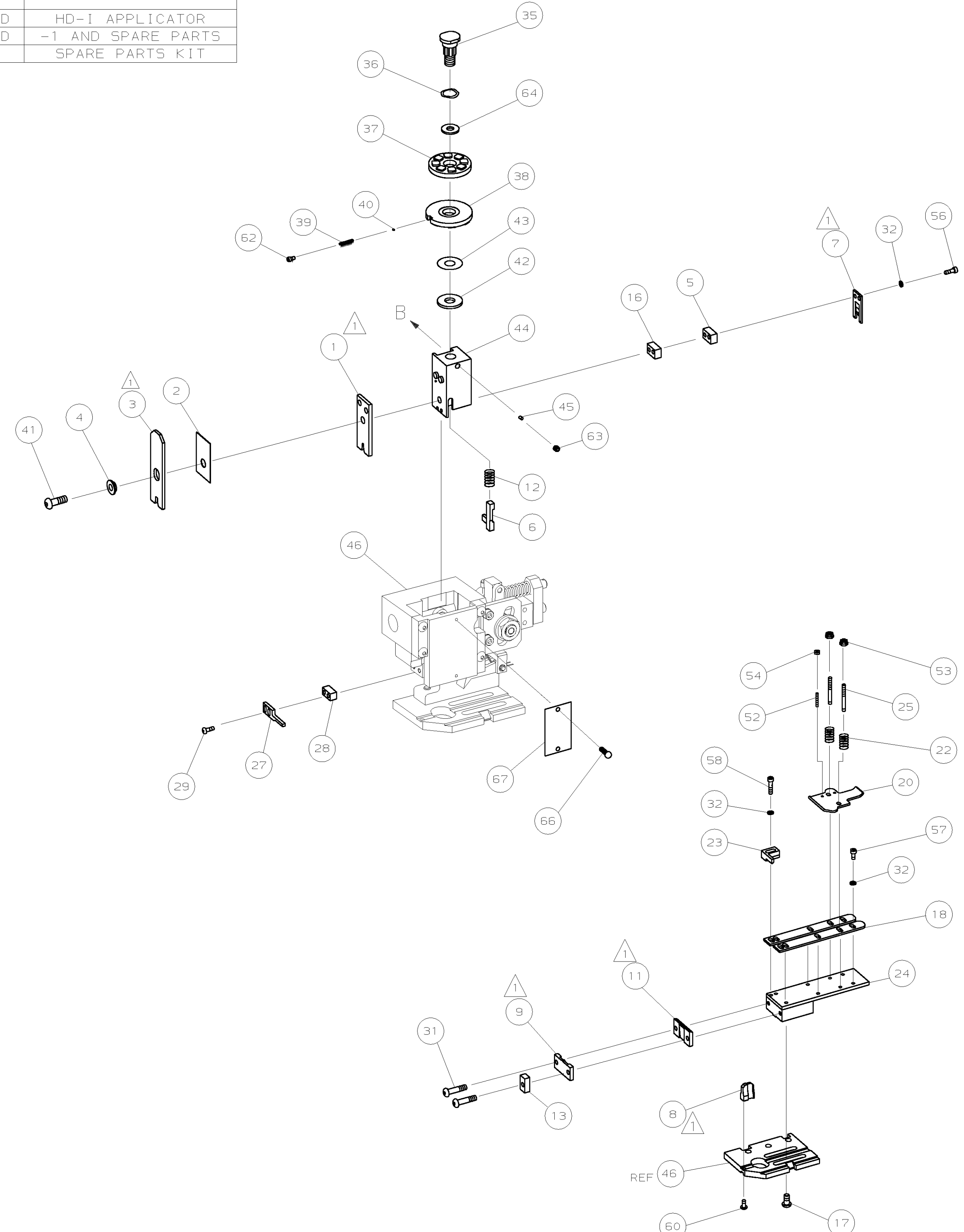
TERMINAL APPL SPEC: 114-3118 FEED: 21.35 [.840 IN]

**TERMINALS APPLIED**

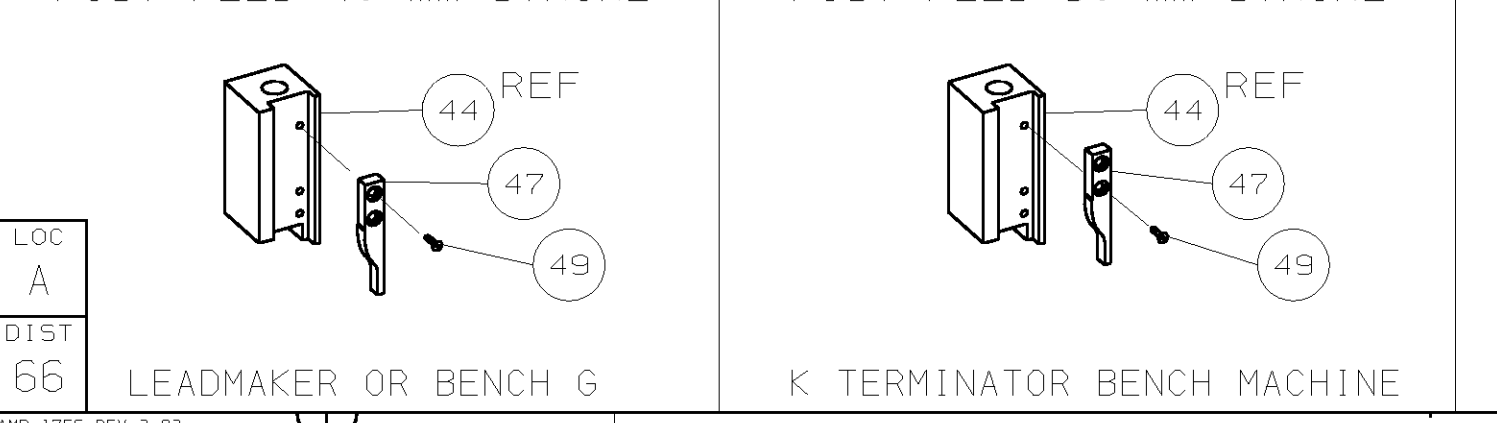
AMP PN	MFR PN	-	-	-
1572040-1	STO-6.0T-250N	-	-	-
-	-	-	-	-
-	-	-	-	-
-	-	-	-	-
-	-	-	-	-
-	-	-	-	-

WIRE SIZE mm <sup>2</sup> AWG	CRIMP HEIGHT	PIN PN AND LENGTH [IN]
2 x 1.50mm <sup>2</sup>	2.28 ±0.05 [.090 ±.002 IN]	6-354778-0 [.2795]
-	-	-
-	-	-
-	-	-
-	-	-
-	-	-
-	-	-
-	-	-
-	-	-
-	-	-
-	-	-
-	-	-
-	-	-
-	-	-
-	-	-
-	-	-
-	-	-
-	-	-
-	-	-
-	-	-
-	-	-
-	-	-
-	-	-
-	-	-
-	-	-
-	-	-
-	-	-
-	-	-
-	-	-

- △ RECOMMENDED SPARE PARTS.
- 2. GREASE RAM, CAM, CAM FOLLOWER AND FEED ROD LIGHTLY.
- 3. LUBRICATE DAILY PER THE APPLICATOR INSTRUCTION SHEET SUPPLIED WITH THE APPLICATOR.
- 4 THIS APPLICATOR HAS BEEN DESIGNED FOR DOUBLE WIRE APPLICATION ONLY.
- 5 CRIMP DATA SUPPLIED BY ORIGINAL CUSTOMER.
- 6 WIRE RANGE QUOTED IS THAT OF THE TERMINAL, NOT OF THE APPLICATOR.



**VIEW B ROTATED 180°**



QTY	REQD PER ASSY	PART NO	DESCRIPTION	ITEM NO		
-	1	1	1339606	PRINT, APPLICATOR LOG SHEET	73	
-	1	1	1338705-2	DOCUMENTATION PACKAGE	72	
-	-	-	-	-	71	
-	-	-	-	-	70	
-	-	-	-	-	69	
-	-	-	-	-	68	
-	1	1	461264-1	PLATE, IDENTIFICATION	67	
-	2	2	21017-2	SCR, DRIVE (#2X.19) ID PLATE	66	
-	-	-	-	-	65	
-	1	1	986950-1	WASHER, FLAT PRECISION	64	
-	1	1	3-18031-0	SCR, SKT SET (M6X6) RAM	63	
-	1	1	18023-9	SCR, SKT CAP (M4X6) CP D5C	62	
-	-	-	-	-	61	
-	1	1	18024-7	SCR, BHC (M4X10) ANVIL	60	
-	-	-	-	-	59	
-	2	2	1-18023-4	SCR, SHC (M4X20) HOLD DOWN	58	
-	5	5	1-18023-0	SCR, SHC (M4X8) STRIP GUIDE	57	
-	2	2	1-18023-2	SCR, SHC (M4X12) SLUG BLADE	56	
-	-	-	-	-	55	
-	2	2	18029-1	NUT, HEX (M3) DRAG	54	
-	2	2	986965-1	NUT, HEX SL (M4) DRAG STUD	53	
-	2	2	2-18032-2	SCR, SKT SET (M3X10) DRAG	52	
-	-	-	-	-	51	
-	-	-	-	-	50	
-	1	1	18024-3	SCR, BHC (M3X10) CAM	49	
-	-	-	-	-	48	
-	1	1	1338676-1	CAM, POST-FEED 30 & 40 mm ST	47	
-	1	1	1338662-2	APPLICATOR, BASIC (SUBASSY)	46	
-	1	1	690191-1	PLUG, NYLON	45	
-	1	1	1320998-1	RAM	44	
-	1	1	690125-1	WASHER, LAMINATED	43	
-	1	1	690124-1	WASHER, RAM	42	
-	1	1	2-18024-6	SCREW, BHC (M8X25) CRIMPER	41	
-	1	1	23241-1	BALL, STEEL	40	
-	1	1	2-22278-7	SPRING, COMPRESSION	39	
-	1	1	1320922-1	DISC, INSULATION	38	
-	1	1	354777-1	WIRE DISC, PLASTIC	37	
-	1	1	22480-5	WASHER, SPRING	36	
-	1	1	690212-1	POST, RAM	35	
-	-	-	-	-	34	
-	-	-	-	-	33	
-	9	9	18025-2	WASHER, LOCK (M4) SHEAR BL	32	
-	2	2	1-18024-0	SCR, BHC (M4X20) SHEAR PL	31	
-	-	-	-	-	30	
-	2	2	18024-8	SCR, BHC (M4X12) STRIPPER	29	
-	1	1	3-690451-2	SPACER, STRIPPER	28	
-	1	1	240639-1	STRIPPER	27	
-	-	-	-	-	26	
-	2	2	1320906-1	DRAG, STUD	25	
-	1	1	1320995-1	STRIP GUIDE	24	
-	1	1	240825-2	PLATE, STRIP HOLD DOWN	23	
-	2	2	4-22281-1	SPRING, DRAG	22	
-	-	-	-	-	21	
-	1	1	1338665-1	DRAG, STOCK	20	
-	-	-	-	-	19	
-	2	2	1338663-8	GUIDE, LOWER STRIP	18	
-	4	4	1-18024-8	SCR, BHC (M6X12) STRIP 6D PL	17	
-	1	1	1338708-1	SPACER, SLUG BLADE	16	
-	-	-	-	-	15	
-	-	-	-	-	14	
-	1	1	690481-2	SPACER, HOLD DOWN	13	
-	1	1	23846-1	SPRING, HOLD DOWN	12	
-	1	1	240644-1	PLATE, REAR SHEAR	11	
-	-	-	-	-	10	
-	1	1	690482-3	PLATE, FRONT SHEAR	9	
△	1	2	1	1333222-3	ANVIL	8
△	1	1	1	690474-3	BLADE, SLUG	7
△	1	1	1	1-455892-1	HOLD DOWN, TERMINAL	6
-	1	1	1	6-240641-9	SPACER, SLUG BLADE	5
-	1	1	1	238009-1	SPACER, BLOCK CRIMPER	4
△	1	2	1	1583690-1	CRIMPER, INSULATION	3
△	1	1	1	1-455888-0	SPACER, CRIMPER	2
△	1	2	1	456411-2	CRIMPER, WIRE	1

DIMENSIONS: mm [INCHES]		MATL	HT TR	FIN
DO NOT SCALE PRINT.		-	-	-
TOLERANCES UNLESS OTHERWISE SPECIFIED:				
1	PLC DEC ±	-	-	-
2	PLC DEC ±	-	-	-
3	PLC DEC ±	-	-	-
ANGLES ±				
SURF TEXTURE: ✓				
REMOVE BURRS, BREAK SHARP EDGES RO.38 MAX				
DR	06DEC01	APP	06DEC01	
M	CLIFFORD	F	BACKHURST	
CHK	-	REL	13-05-02	
NAME		END FEED HD-I APPLICATOR		MACHINE REF
SCALE	-	DWG NO	1339606	HD-I APPL
CASE CODE	00779	REVISION RECORD	REVISION OF EACH ASSY NO (WHEN BLANK, USE DWG REVISION)	SHEET 1 OF 1
CUSTOMER AND ASSEMBLY DRAWING				RESTRICTED TO

THIS DRAWING IS A CONTROLLED DOCUMENT.  
 THIS DRAWING IS UNRELEASED.  
 THIS DRAWING IS UNRELEASED.  
 RELEASED FOR PUBLICATION.  
 SET UP GAGE 458638-3  
 LAYOUT L1339606  
 AMP 1756 REV 3-92  
 COPYRIGHT 2000  
 BY AMP INCORPORATED. ALL RIGHTS RESERVED.