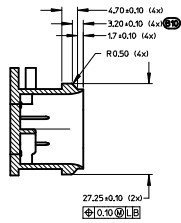
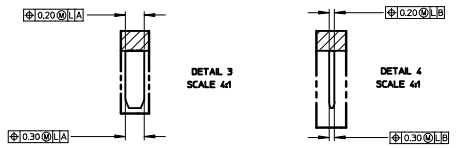
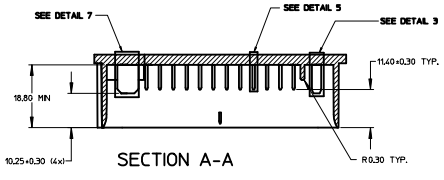
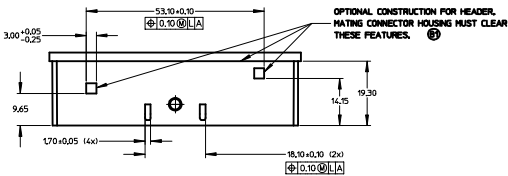
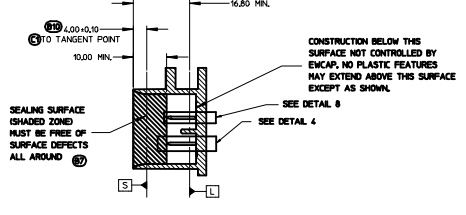
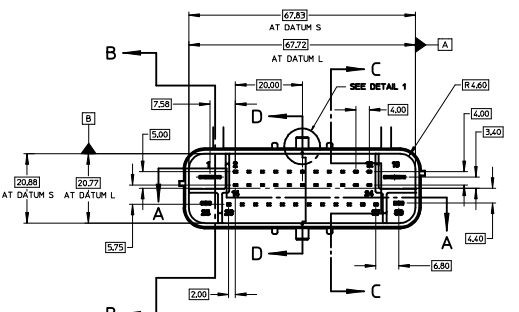


NOTES:

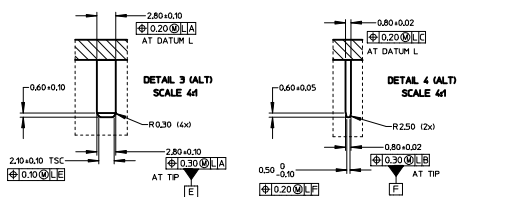
- 1. ALL DIMENSIONS SHOWN IN MILLIMETERS.
- 2. DIMENSIONING AND TOLERANCING PER ASME Y14.5-1994.
- 3. RADIUS ON ALL CORNERS SHOWN SHARP OR ALL UNSPECIFIED RADII 0.25 EXCEPT AS NOTED.
- 4. REFER TO "SAE/USCAR-12 CONNECTOR DESIGN GUIDELINES" FOR ADDITIONAL INFORMATION.
- 5. 0.25 DEGREE DRAFT ON ALL INSIDE SURFACES, UNLESS OTHERWISE SPECIFIED.
- 6. STANDARD COLORS FOR POLARIZATION - DEVIATION REQUIRES APPROVAL OF AUTHORIZED PERSON.
- 7. REFER TO DRAWING ENCAP-001 FOR TERMINAL GEOMETRY AND PLATING DETAILS.



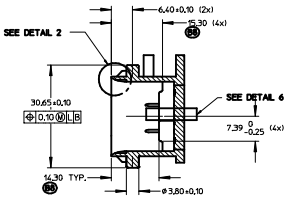
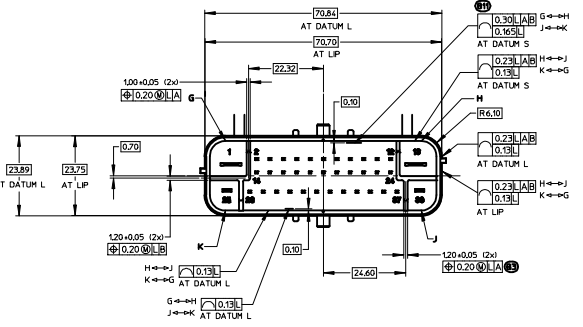
SECTION C-C



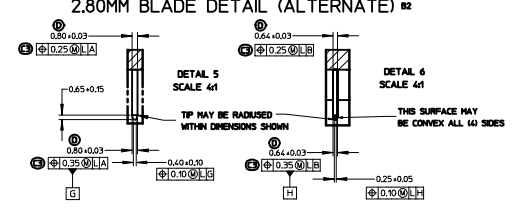
SECTION B-B



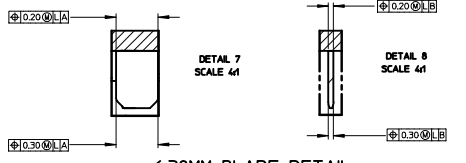
2.80MM BLADE DETAIL (ALTERNATE) B2



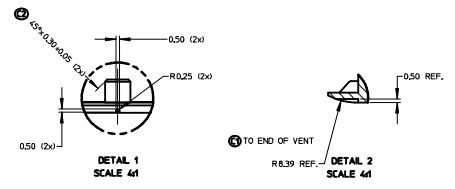
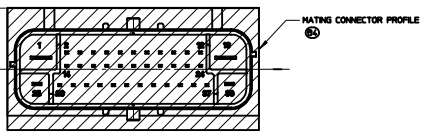
SECTION D-D



0.80X0.64MM BLADE DETAIL



6.30MM BLADE DETAIL

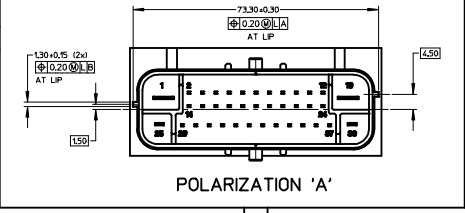


TO BE DETERMINED

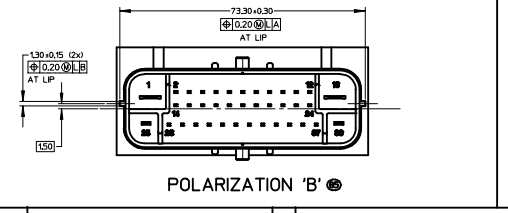
POLARIZATION 'C'



999-S-038-C01	C	BROWN
999-S-038-001	B	GRAY
999-S-038-A01	A	BLACK
USCAR PART NO.	OPTION	COLOR



POLARIZATION 'A'



POLARIZATION 'B'

REV	DESCRIPTION	DATE	BY	CHK
001	REVISED 0.64mm x 0.80mm PIN SIZE TOLERANCE ±0.03	03/29/2005	MCD	BBW
002	REVISED 0.64mm POS. 0.25 BASE/0.35 TIP			
003	ADDED CHAMFER DIMENSION 45°±0.30±0.05			
004	CLARIFIED LOCATION OF TANGENT POINT	10/25/2004	MCD	BBW
005	INCREASED TOLERANCE ON LONG SIDES			
006	DIMENSION FEATURES TO FRONT OF SHROUD			
007	REVISED GD&T ON 0.80X0.64 BLADE			
008	ADDED CIRCUIT DIVIDER HEIGHT			
009	ADDED SEALING AREA DESCRIPTION			
010	REMOVED ENCAP FROM TITLE BLOCK			
011	ADDED POLARIZATION 'B'			
012	ADDED MATING CONN. PROFILE			
013	CHANGED DIVIDER WALL TOLERANCE TO 0.20			
014	ADDED OPTIONAL BLADE CONSTRUCTION			
015	ADDED STANDOFF RIBS	12/22/2005	MCD	BBW
002	RELEASED	08/25/2003	MCD	BBW

DATE	08/25/2003
SCALE	2:1
DRAWN BY	DIANEELS
CHECKED BY	WILSON
TITLE	36 CIRCUIT ABS CONNECTOR INTERFACE -OPTION 2

TABLE OF CONTENTS

SHEET NO.	SHEET DESCRIPTION
1	NOTES AND BOM
2	CONFIGURATIONS
3	RECEPTACLE CONNECTOR ASSEMBLY
4	WIRE SHIELD

MATING INTERFACE DRAWINGS

SERIES	INTERFACE DEFINITION
31380	*999-S-038-3-Z01
31381	*999-S-038-3-Z02

NOTES: VALID UNLESS OTHERWISE SPECIFIED

- CONNECTOR TO BE SHIPPED WITH TPA IN PRE-LOAD POSITION AS SHOWN IN SECTION Z-Z.
- ALL TEXT TO BE CLEARLY LEGIBLE AND 1.50MM MIN. HEIGHT. MARKING ORIENTATION MAY BE PARALLEL TO THE LENGTH OF THE PART, AS SHOWN, OR PERPENDICULAR TO THE LENGTH OF THE PART.

DATE CODE DESCRIPTION:

-1st THROUGH 3rd DIGIT = "DAY#" OF THE CALENDAR YEAR. (EXAMPLE FEB. 3rd = '034')

-LAST DIGIT = LAST DIGIT OF CALENDAR YEAR. (EXAMPLE: 2000 = '0')

SERIAL NUMBER DESCRIPTION:

-FIRST CHARACTER "M." = ASSEMBLY MACHINE NUMBER

-FOLLOWING NUMBER STARTS AT "00001" AND IS RESET FOR EACH NEW "DAY#".

MOLEX PART NUMBER:

- SEE TABLE

3. DIMENSIONS NOT SHOWN CAN BE OBTAINED FROM THE ASSOCIATED MODEL.

4. GENERAL:

a. APPLICATION SPECIFICATION SEE: AS-31380-001

-CONTAINS: PRODUCT INTRODUCTION, PRODUCT SUMMARY, HARNESS ASSEMBLY, CONNECTOR MATING, AND SERVICE INSTRUCTIONS.

-DESIGNED TO MATE WITH DEVICE AS SPECIFIED IN THE MATING INTERFACE DRAWINGS CHART.

*DENOTES DRAWINGS THAT CAN BE ACCESSED AT <<http://ewcap.uscarteams.org/>>.

b. PRODUCT SPECIFICATION SEE: PS-31380-100

CONTAINS: PRODUCT INTRODUCTION, PRODUCT SUMMARY, RATINGS (CURRENT AND TEMPERATURE).

TERMINALS, WIRE DIAMETER RANGE, PRODUCT VALIDATION, AND PRODUCT DEVIATIONS.

c. PACKAGING SPECIFICATION PER MOLEX DRAWING: PK-31300-550

d. PARTS MUST BE IN COMPLIANCE TO MOLEX CHEMICAL SUBSTANCES FOR PRODUCTS AND PACKAGING SPECIFICATION: QEHS-699000-300

e. DATA MUST BE SUBMITTED UNDER THE MOLEX PART NUMBER TO IMDS (COMPANY ID#13255)

5. DESIGN - MATERIALS:

a. SEE BOM TABLE IN SD-31380-0002

6. DESIGN - GEOMETRY:

a. THE 3-D CAD DATA IS BASIC (WITHOUT TOLERANCE) AND MASTER FOR THIS PART WITH THE EXCEPTION OF UNDERLINED DIMENSIONS. DIMENSIONAL INFORMATION NOT SHOWN ON THIS DRAWING IS DEFINED BY THE DATA FILE AT ITS LATEST REVISION.

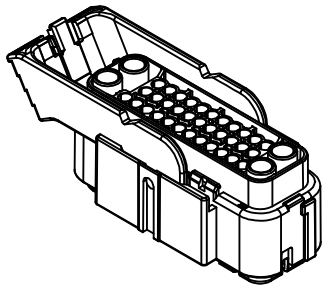
b. GEOMETRIC DIMENSIONS AND TOLERANCES PER ASME Y14.5M-2009

c. EDGES AND UNDIMENSIONED DETAILS PER ISO13715

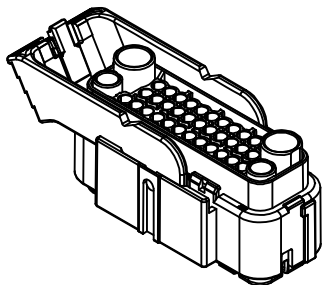
d. CORNERS SHOWN AS SHARP TO BE R 0.2 MAX.

e. VISUAL DEFECTS SHALL MEET COSMETIC STANDARD PS-45499-002 (Class B).

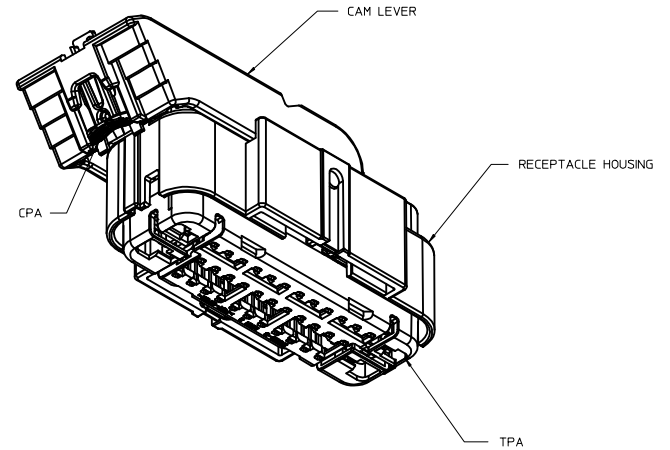
7. MUST BE USED WITH WIRE SHIELD - MOLEX PART NUMBER 31382-1001. WIRE SHIELD SHIPPED SEPARATELY.



31381 SERIES



31380 SERIES



INSPECTION NUMBER LOG	
LAST NUMBER: 2	A
ADDED:	INITIAL RELEASE
REMOVED:	

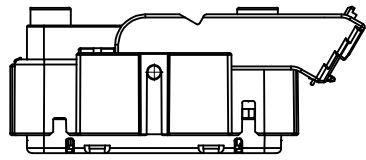
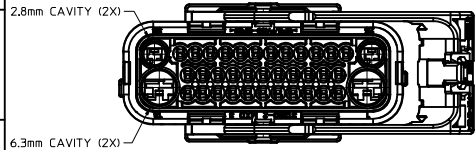
ENTER DESCRIPTION EC NO: UAU2014-1972 DRAWN/PROFIT: 2014/06/26 CHKD/CRIZZI: 2014/06/27 APPR/WKOSHY: 2014/06/30	QUALITY SYMBOLS	GENERAL TOLERANCES (UNLESS SPECIFIED)		DIMENSION STYLE		DRAWN BY DATE	DATE	TITLE
		mm	INCH	MM ONLY	SCALE			
REV DESCRIPTION	▽=0	4 PLACES	± --- ± ---	APPROFIT	2014/06/26	APPROVED BY DATE VKOSHY 2014/06/30	MATERIAL NO.	DOCUMENT NO. SD-31380-0001
	▽=0	3 PLACES	± --- ± ---	CHECKED BY	DATE			
	▽=0	2 PLACES	± 0.13 ± ---					
	▽=0	1 PLACE	± 0.25 ± ---					
		0 PLACE	± --- ± ---			SEE NOTE 5a.		SHEET NO. 1 OF 4
		ANGULAR ± 1 °				THIS DRAWING CONTAINS INFORMATION THAT IS PROPRIETARY TO MOLEX INCORPORATED AND SHOULD NOT BE USED WITHOUT WRITTEN PERMISSION		
		DRAFT WHERE APPLICABLE MUST REMAIN WITHIN DIMENSIONS						

USCAR 38 WAY HYBRID RCPT SEALED ASSEMBLY

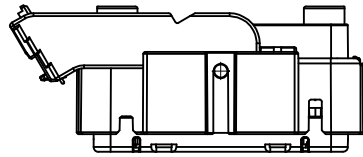
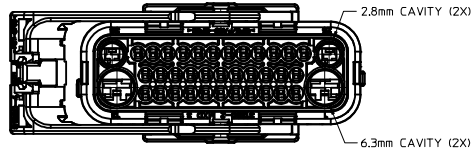


SHEET DESCRIPTION

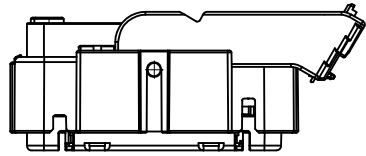
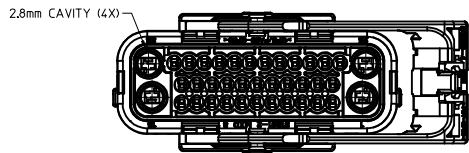
CONFIGURATIONS



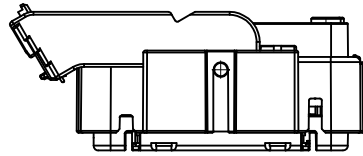
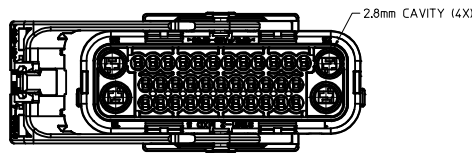
31380-10XX
TYPE II HARNESS ASSEMBLY
COUNTERCLOCKWISE LEVER THROW



31380-11XX
TYPE II HARNESS ASSEMBLY
CLOCKWISE LEVER THROW



31381-10XX
TYPE I HARNESS ASSEMBLY
COUNTERCLOCKWISE LEVER THROW

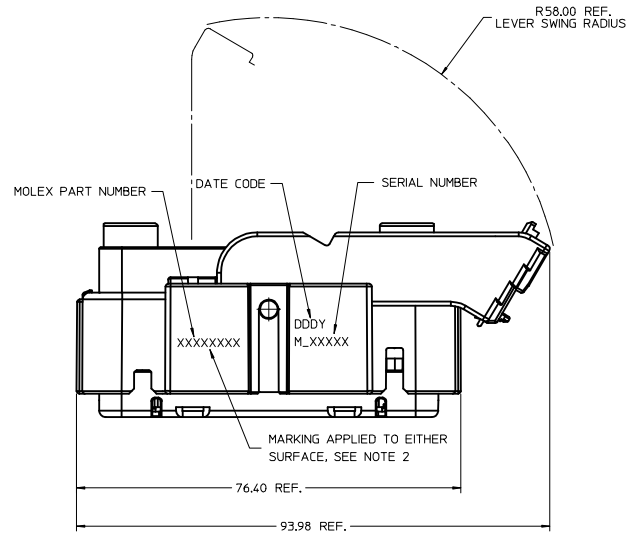
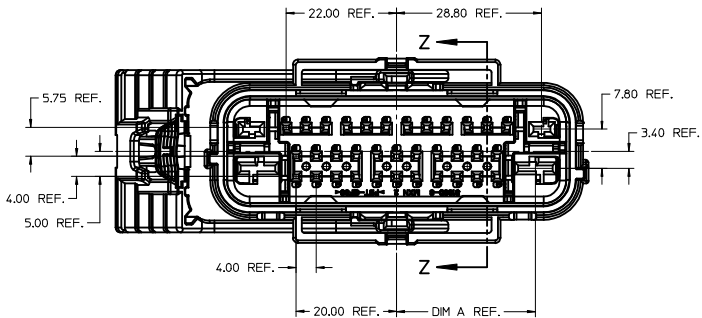
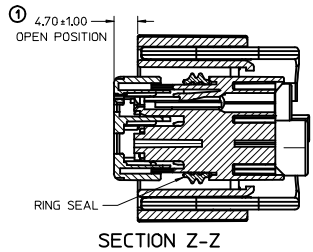
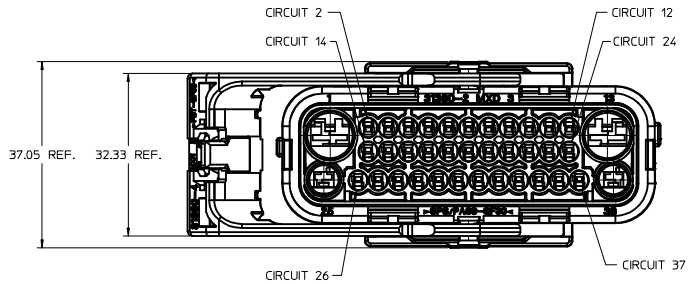


31381-11XX
TYPE I HARNESS ASSEMBLY
CLOCKWISE LEVER THROW

ENTER DESCRIPTION EC NO: UAU2014-1972 DRAWN BY: APROFF ITT 2014/06/26 CHECKED BY: CHYKOR IZZI 2014/06/27 APPR: VKOSHY 2014/06/30 REV: A	QUALITY SYMBOLS	GENERAL TOLERANCES (UNLESS SPECIFIED)	DIMENSION STYLE	SCALE	DESIGN UNITS	THIRD ANGLE PROJECTION
	▽=0	mm INCH	MM ONLY	1.5:1	METRIC	
	▽=0	4 PLACES ± --- ± ---	DRAWN BY DATE	TITLE		
	▽=0	3 PLACES ± --- ± ---	APPROFF ITT 2014/06/26	USCAR 38 WAY HYBRID RCPT SEALED ASSEMBLY		
▽=0	2 PLACES ± 0.13 ± ---	CHECKED BY DATE	molex			
▽=0	1 PLACE ± 0.25 ± ---	APPROVED BY DATE	DOCUMENT NO.			
▽=0	0 PLACE ± --- ± ---	VKOSHY 2014/06/30	SD-31380-0001			
	ANGULAR ± 1 °	MATERIAL NO.	SHEET NO.			
	DRAFT WHERE APPLICABLE MUST REMAIN WITHIN DIMENSIONS	SEE NOTE 5a.	2 OF 4			
		SIZE 1	THIS DRAWING CONTAINS INFORMATION THAT IS PROPRIETARY TO MOLEX INCORPORATED AND SHOULD NOT BE USED WITHOUT WRITTEN PERMISSION			

SHEET DESCRIPTION
RECEPTACLE CONNECTOR ASSEMBLY

CHARTED DIMENSIONS	
SERIES	DIMENSION
31380	A
31381	27.58
	27.90

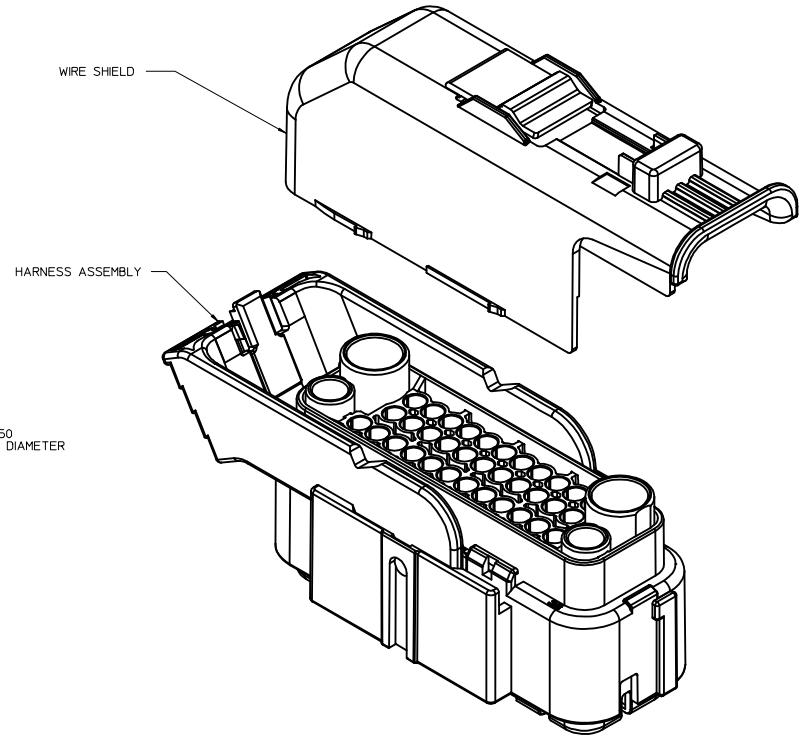
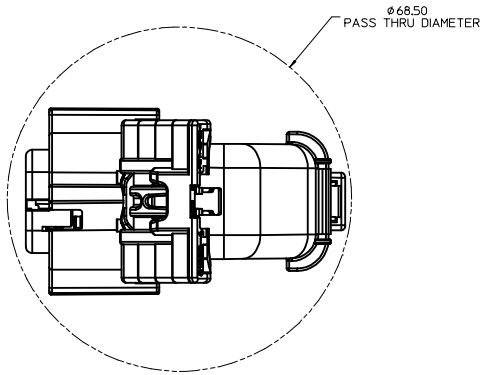
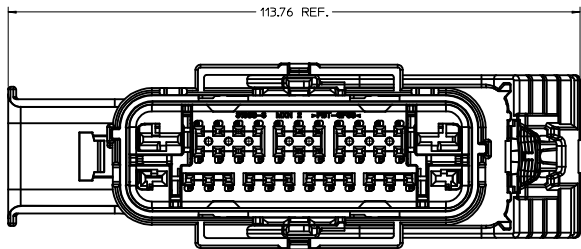


ENTER DESCRIPTION EC NO: UAU2014-1972 DRW/APPROF/ITT CHY/KCR/IZZ APPR:VKOSHY 2014/06/26 2014/06/27 2014/06/30	QUALITY SYMBOLS ▽=0 ▽=0 ▽=0	GENERAL TOLERANCES (UNLESS SPECIFIED) 4 PLACES ± --- ± --- 3 PLACES ± --- ± --- 2 PLACES ± 0.13 ± --- 1 PLACE ± 0.25 ± --- 0 PLACE ± --- ± ---	DIMENSION STYLE MM ONLY	SCALE 2:1	DESIGN UNITS METRIC	THIRD ANGLE PROJECTION	
	DRAWN BY APROFF/ITT	DATE 2014/06/26	CHECKED BY DATE	APPROVED BY VKOSHY	DATE 2014/06/30	MATERIAL NO. SEE NOTE 5a.	DOCUMENT NO. SD-31380-0001
	ANGULAR ± 1 ° DRAFT WHERE APPLICABLE MUST REMAIN WITHIN DIMENSIONS	SEE NOTE 5a.	THIS DRAWING CONTAINS INFORMATION THAT IS PROPRIETARY TO MOLEX INCORPORATED AND SHOULD NOT BE USED WITHOUT WRITTEN PERMISSION	SHEET NO. 3 OF 4			
				SHEET NO. 3 OF 4			

SHEET DESCRIPTION
WIRE SHIELD

WIRESHIELD NOTES: VALID UNLESS OTHERWISE SPECIFIED

1. GENERAL:
 a. APPLICATION SPECIFICATION SEE: AS-31380-001
 -WIRE SHIELD (MOLEX PART NUMBER 31382-1001) MUST BE USED WITH HARNESS ASSEMBLY
 -WIRE SHIELD SHIPPED SEPARATELY
 -FOR ADDITIONAL INFORMATION SEE THE WIRE SHIELD COMPONENT DRAWING SD-31382-100.



ENTER DESCRIPTION EC NO: UAU2014-1972 DRWNG: APROFF/TT 2014/06/26 CHKDR: R/ZZI 2014/06/27 APPR: VKOSHY 2014/06/30	QUALITY SYMBOLS ∇=0 ∇=0 ∇=0	GENERAL TOLERANCES (UNLESS SPECIFIED)		DIMENSION STYLE MM ONLY		SCALE 2.5:1	DESIGN UNITS METRIC	THIRD ANGLE PROJECTION		
		4 PLACES ± --- ± --- 3 PLACES ± --- ± --- 2 PLACES ± 0.13 ± --- 1 PLACE ± 0.25 ± --- 0 PLACE ± --- ± ---	mm INCH DRAWN BY DATE APROFF/TT 2014/06/26 CHECKED BY DATE	TITLE USCAR 38 WAY HYBRID RCPT SEALED ASSEMBLY		APPROVED BY DATE VKOSHY 2014/06/30		DOCUMENT NO. SD-31380-0001		SHEET NO. 4 OF 4
		ANGULAR ± 1 ° DRAFT WHERE APPLICABLE MUST REMAIN WITHIN DIMENSIONS		MATERIAL NO. SEE NOTE 5a.		SIZE THIS DRAWING CONTAINS INFORMATION THAT IS PROPRIETARY TO MOLEX INCORPORATED AND SHOULD NOT BE USED WITHOUT WRITTEN PERMISSION				
		REV A								

