

MATERIALS AND FINISHES

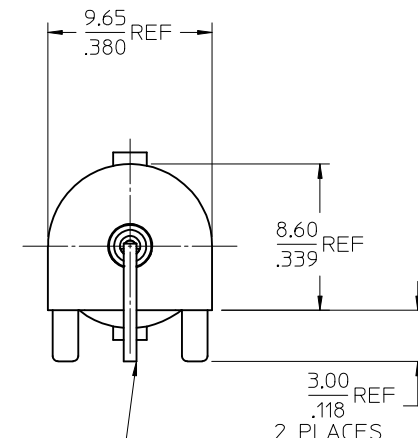
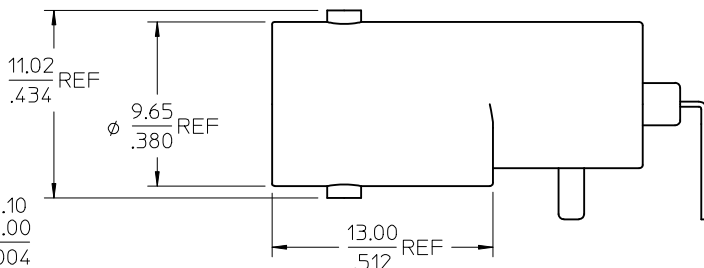
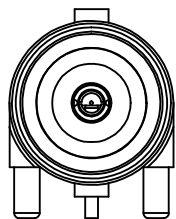
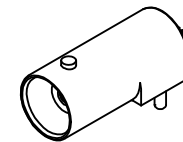
BODY ZINC ALLOY
PLATED NICKEL

CENTER CONTACT PHOSPHOR BRONZE
PLATED GOLD/TIN

INSULATOR POLYPROPYLENE

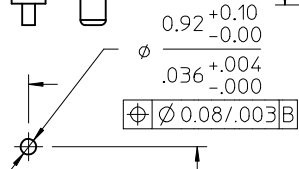
BNC JACK
INTERFACE

TOP VIEW

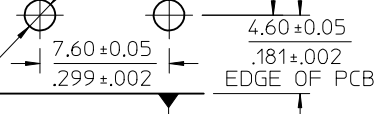


THIS LEAD IS FORMED TO FIT
RECOMMENDED PCB PATTERN
DURING INSTALLATION

3.80 ± 0.05
 $.150 \pm 0.02$

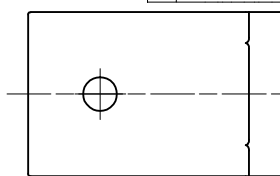


1.80 ± 0.10
 $.071 \pm 0.004$
2 PLACES



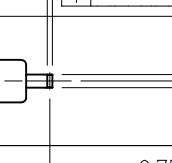
RECOMMENDED PCB PATTERN

1.50 ± 0.05
 $.059 \pm 0.002$
2 PLACES

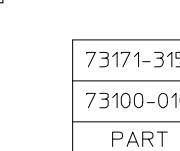


BOTTOM VIEW

0.30
 $.012$ REF



7.80
 $.307$ REF
 4.60
 $.181$ REF



PS-73598-0050	PRODUCT SPECIFICATION
SPECIFICATION	DESCRIPTION

73171-3150	73100-0105, ONE PER BAG
73100-0105	BULK
PART NO.	PACKAGING

CHG: REDREW IN SD ADDED P/N 73100-0105	EC NO: URF2007-0396	DATE: 2007/05/01
	DRW: TELAHERTY	DATE: 2007/05/01
	CHK: S SHAH	DATE: 2007/05/01
	APPR: W IENER	DATE: 2007/05/01
REV: C2	DESCRIPTION	

QUALITY SYMBOLS	▽=0
	▽=0

GENERAL TOLERANCES (UNLESS SPECIFIED)	DIMENSION STYLE MM/IN	SCALE	DESIGN UNITS METRIC	THIRD ANGLE PROJECTION
4 PLACES ± --- ± ---	DRAWN BY THOMPSON TSA	DATE 1994/09/15	TITLE BNC JACK, R/A, RECEPTACLE	
3 PLACES ± --- ± ---	CHECKED BY A CHANG	DATE 1994/09/15	50 OHMS	
2 PLACES ± --- ± ---	APPROVED BY A CHANG	DATE 1994/09/15	BNC-J/RA/PCB	
1 PLACE ± --- ± ---	ANGULAR ± 2 °		MATERIAL NO. SEE TABLE	DOCUMENT NO. SD-73100-0105
DRAFT WHERE APPLICABLE MUST REMAIN WITHIN DIMENSIONS	SHEET NO. 1 OF 1		MOLEX INCORPORATED	
THIS DRAWING CONTAINS INFORMATION THAT IS PROPRIETARY TO MOLEX INCORPORATED AND SHOULD NOT BE USED WITHOUT WRITTEN PERMISSION				