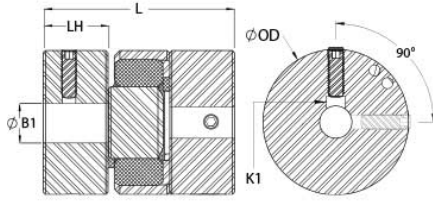




## JSC36-10-A


Ruland JSC36-10-A, 5/8" Jaw Coupling Hub, Aluminum, Set Screw Style With Keyway, 2.250" OD, 1.130" Length



### Description

Ruland JSC36-10-A is a set screw zero-backlash jaw coupling hub with a 0.6250" bore, 3/16" keyway, 2.250" OD, and 1.130" length. It is a component in a three-piece design consisting of two aluminum hubs and an elastomeric insert called the spider creating a lightweight low inertia coupling capable of speeds up to 8,000 RPM. This three-piece design allows for a highly customizable coupling that easily combines clamp or set screw hubs with inch, metric, keyed, and keyless bores. Spiders are available in three durometers allowing the user to tailor coupling performance to their application. Ruland jaw couplings have a balanced design for reduced vibration at high speeds. Hardware is metric and tests beyond DIN 912 12.9 standards for maximum torque capabilities. JSC36-10-A is machined from bar stock that is sourced exclusively from North American mills and is RoHS3 and REACH compliant. It is manufactured in our Marlborough, MA factory under strict controls using proprietary processes.

### Product Specifications

<b>Bore (B1)</b>	0.6250 in	<b>Keyway (K)</b>	3/16 in
<b>B1 Max Shaft Penetration</b>	1.130 in	<b>Outer Diameter (OD)</b>	2.250 in (57.2 mm)
<b>Bore Tolerance</b>	+0.001 in / -0.000 in	<b>Hub Width (LH)</b>	1.130 in
<b>Length (L)</b>	3.150 in (80.0 mm)	<b>Recommended Shaft Tolerance</b>	+0.0000 in / -0.0005 in
<b>Forged Set Screw</b>	M8	<b>Number of Screws</b>	2 ea 90° apart
<b>Screw Material</b>	Alloy Steel	<b>Screw Finish</b>	Black Oxide
<b>Hex Wrench Size</b>	4.0 mm	<b>Seating Torque</b>	17 Nm
<b>Torque Specifications</b>	Torque ratings vary with insert selection	<b>Misalignment</b>	Misalignment ratings vary with insert selection
<b>Maximum Speed</b>	8,000 RPM	<b>Moment of Inertia</b>	0.3343 lb-in <sup>2</sup>
<b>Full Bearing Support Required?</b>	Yes	<b>Recommended Inserts</b>	<a href="#">JD36/57-98R</a> , <a href="#">JD36/57-92Y</a>
<b>Zero-Backlash?</b>	Yes	<b>Balanced Design</b>	Yes
<b>Fail Safe?</b>	Yes	<b>Weight (lbs)</b>	0.468500
<b>Temperature</b>	-10°F to 180°F (-23°C to 82°C)	<b>Material Specification</b>	2024-T351 Aluminum Bar
<b>Finish</b>	Bright	<b>Finish Specification</b>	Bright, No Plating
<b>Manufacturer</b>	Ruland Manufacturing	<b>Recommended Gap Between Hubs</b>	0.050 in (1.25 mm)
<b>Country of Origin</b>	USA	<b>UPC</b>	634529113493
<b>UNSPC</b>	31163011	<b>Tariff Code</b>	8483.60.8000
<b>Note 1</b>	Stainless steel hubs are available upon request.		
<b>Note 2</b>	Performance ratings are for guidance only. The user must determine suitability for a particular application.		
<b>Note 3</b>	Torque ratings for the couplings are based on the physical limitations/failure point of the spiders. Under normal/typical conditions the hubs are capable of holding up to the nominal torque of the spiders. Please consult technical support for more assistance.		
<b>Prop 65</b>	 <b>WARNING</b> This product can expose you to the chemical Ethylene Thiourea, known to the State of California to cause cancer and birth defects or other reproductive harm. For more information go to <a href="http://www.P65Warnings.ca.gov">www.P65Warnings.ca.gov</a> .		

### Installation Instructions

1. Align the bores of the JSC36-10-A jaw coupling hubs on the shafts that are to be joined and determine if the misalignment parameters are within the limits of the coupling. (See spider for misalignment parameters.)
2. Fully tighten the M8 screw(s) on the first hub to the recommended seating torque of 17 Nm using a

- 4.0 mm hex torque wrench.
3. Insert a spider into the jaws of one hub until the raised points contact the base of the hub.
  4. Insert the jaws of the second hub into the spider openings until the raised points contact the base of the second hub. Some force will be required to insert the second hub. This is normal.
  5. Assure that a gap is maintained between the two hubs so there is no metal to metal contact. Fully tighten the screw(s) on the second hub to the recommended seating torque.
-