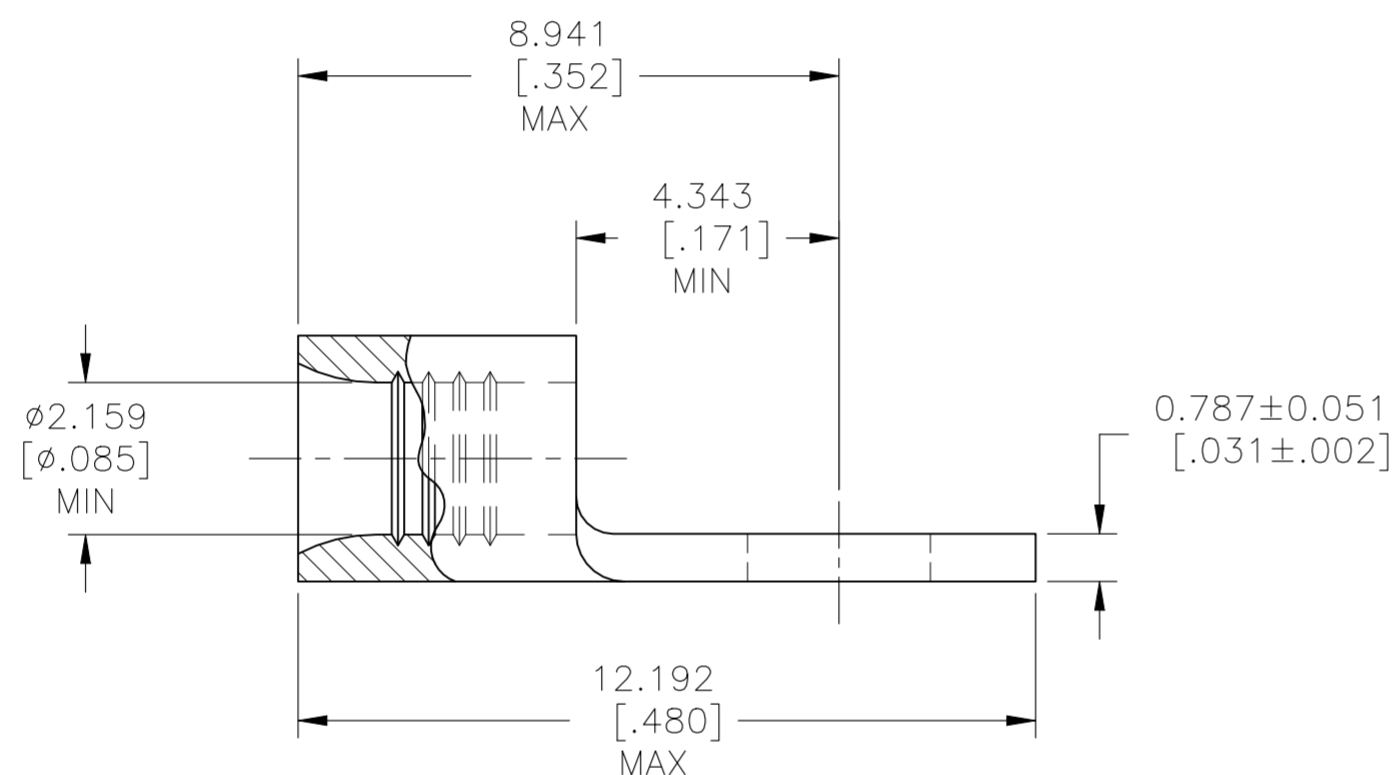
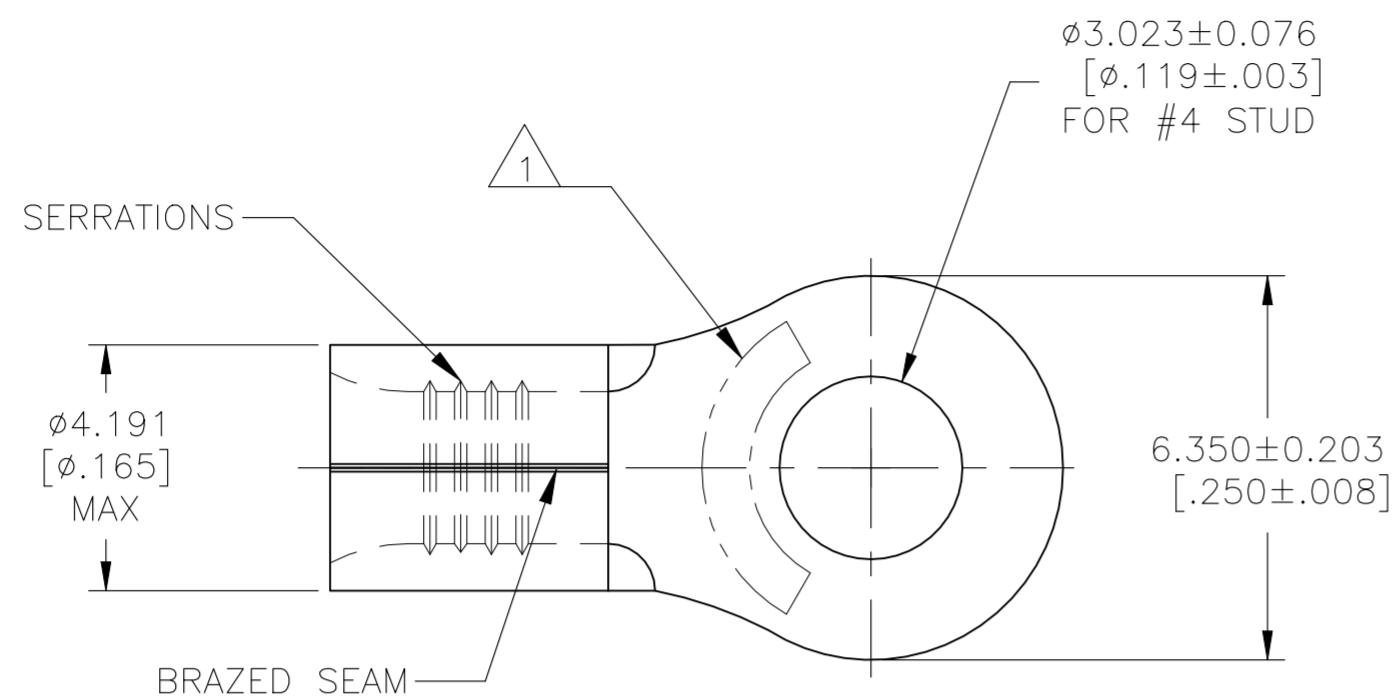


REVISIONS					
P	LTR	DESCRIPTION	DATE	DWN	APVD
D3		REVISED PER ECN-22-150900	28APR2022	RK	CSD



AMP WIRE RANGE	E13288 Listed
16-14 AWG SOLID OR STRANDED	16-14 AWG SOLID OR STRANDED

LR7189 Certified
16-14 AWG SOLID OR STRANDED

- 1 STAMP AMP 16-14* APPROX AS SHOWN
- 2 0.00254 [.000100] MIN TIN PLATE PER ASTM B-545
- 3 NOTE DELETED
- 4 0.00254 [.000100] MIN TIN/LEAD(93/7) PLATE PER ASTM B545 (3% MIN LEAD CONTENT)

AMP INCORPORATED CUSTOMER SERVICE SYSTEMS

MAX RECOMMENDED OPERATING TEMPERATURE:
170° C [338°F] MAX

FOR ADDITIONAL PRODUCT INFORMATION OR COPIES OF DRAWINGS AND TECHNICAL DOCUMENTS

PRODUCT INFORMATION CENTER
1-800-522-6752

VOLTAGE RATING:
NOT APPLICABLE

FOR APPLICATION TOOLING INFORMATION

TOOLING ASSISTANCE CENTER
1-800-722-1111

WIRE CROSS SECTIONAL AREA RANGE:
1.04-2.62mm² [2,050-5,180] CIR MILS
SOLID OR STRANDED

FOR ORDER ENTRY

1-800-526-5142

THIS DRAWING IS A CONTROLLED DOCUMENT FOR AMP INCORPORATED. IT IS SUBJECT TO CHANGE AND THE CONTROLLING ENGINEERING ORGANIZATION SHOULD BE CONTACTED FOR THE LATEST REVISION.

4	1000	LOOSE PIECE	34119-2
2	5000	ON TAPE	2-34119-1
	1000	LOOSE PIECE	34119
FINISH	QUANTITY	PACKAGING TYPE	PART NO

THIS DRAWING IS A CONTROLLED DOCUMENT.		DWN TA BRINKMAN 3-11-93	TE Connectivity	
		CHK DA PATTERSON 3-11-93		
		APVD DE MILLER 3-11-93	NAME	
		PRODUCT SPEC UL486 A-B	TERMINAL, RING TONGUE, SOLISTRAND 16-14 AWG	
		APPLICATION SPEC	SIZE CAGE CODE DRAWING NO	
		FINISH	RESTRICTED TO	
MATERIAL COPPER PER ASTM B-152 ANNEALED		SEE TABLE	WEIGHT -	A2 00779 C=34119
			CUSTOMER DRAWING	SCALE 10:1 SHEET 1 OF 1 REV D3