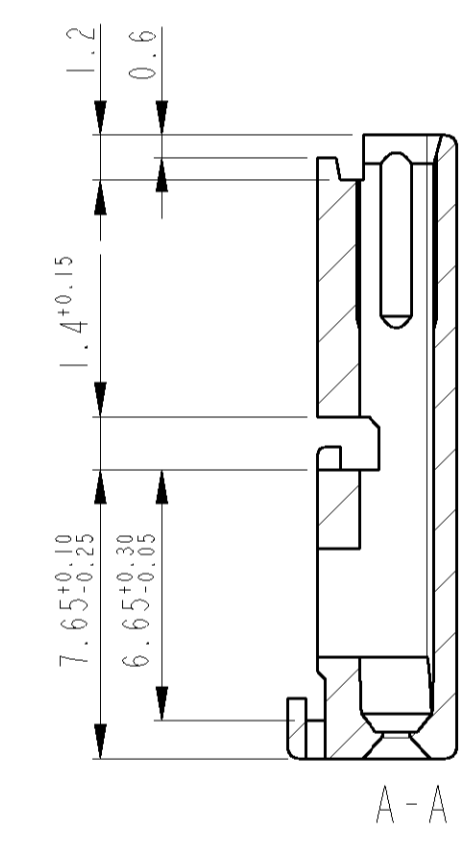
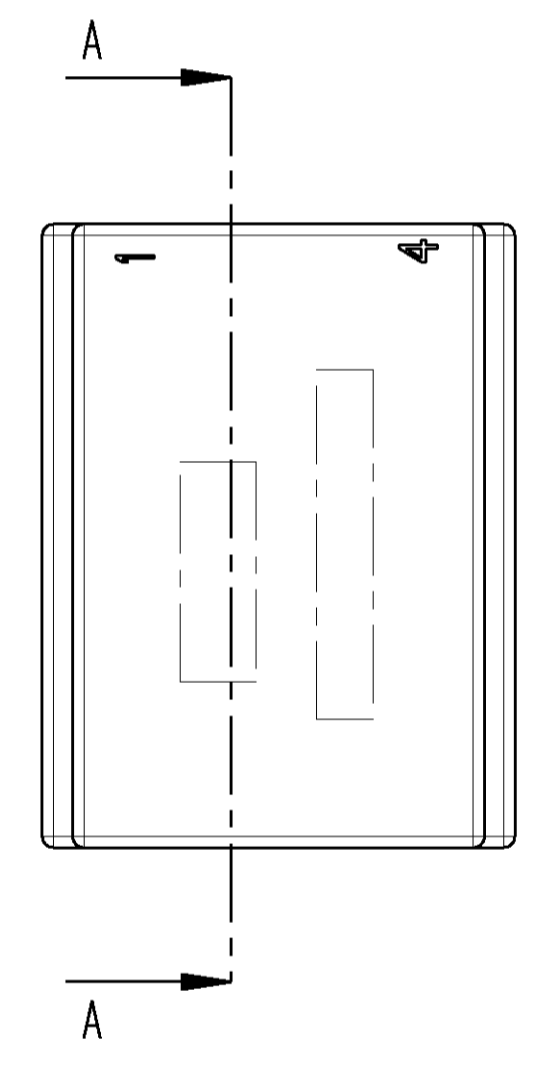
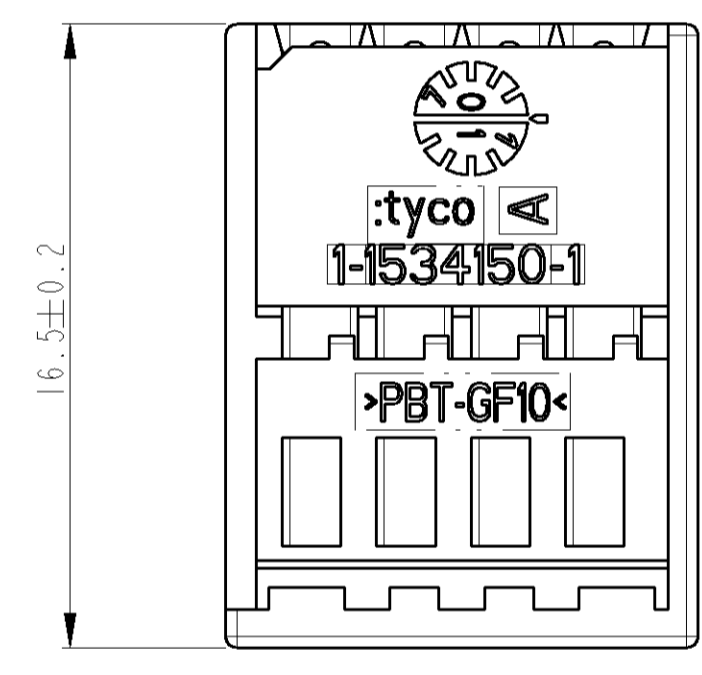
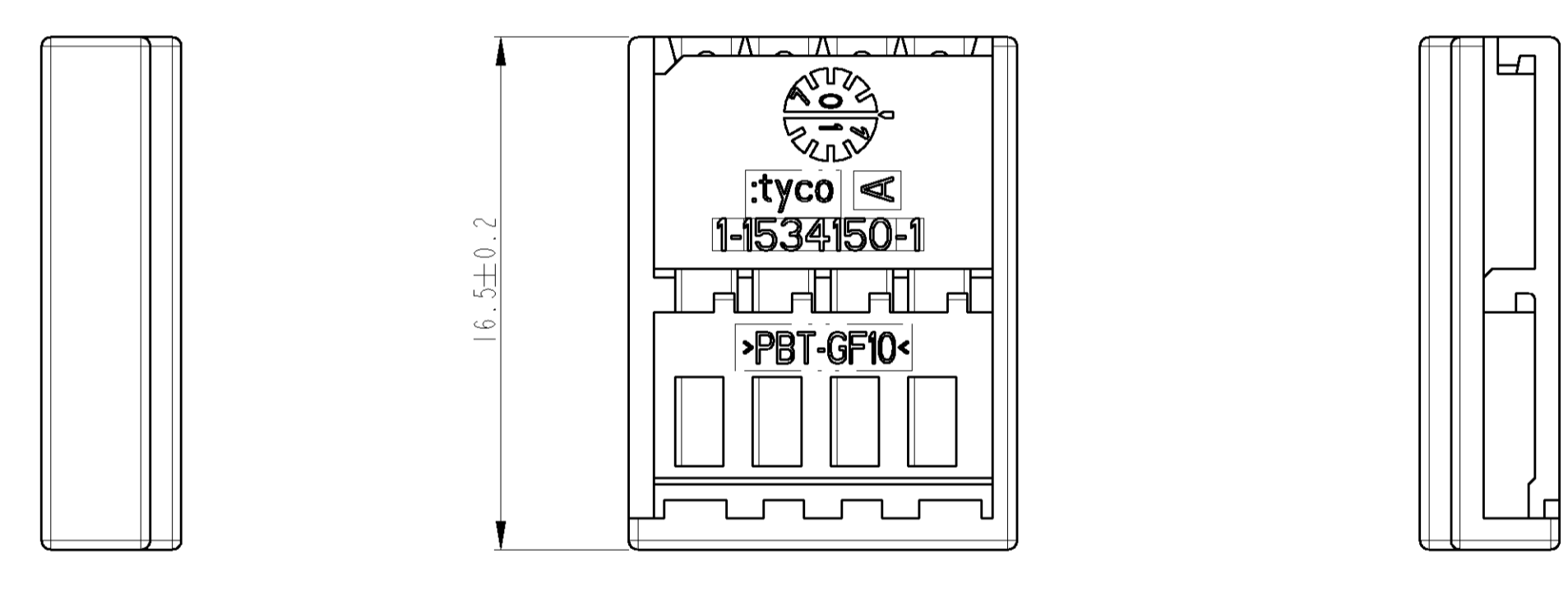
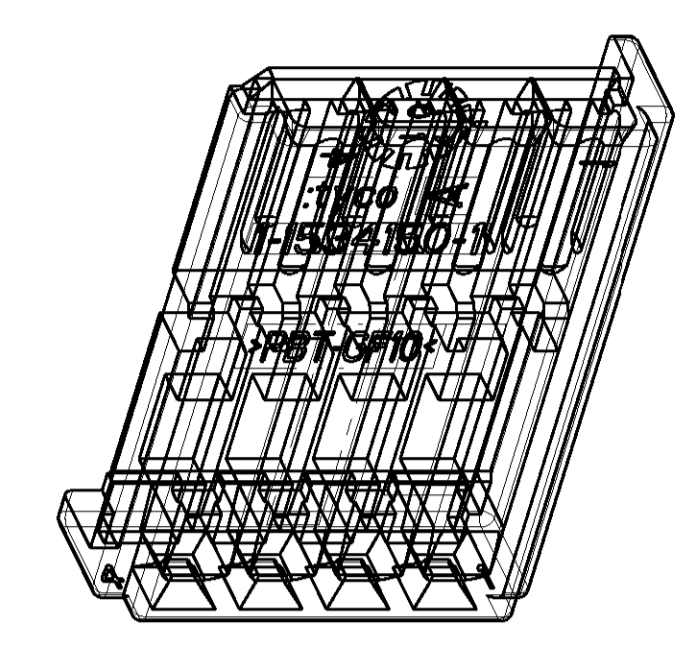
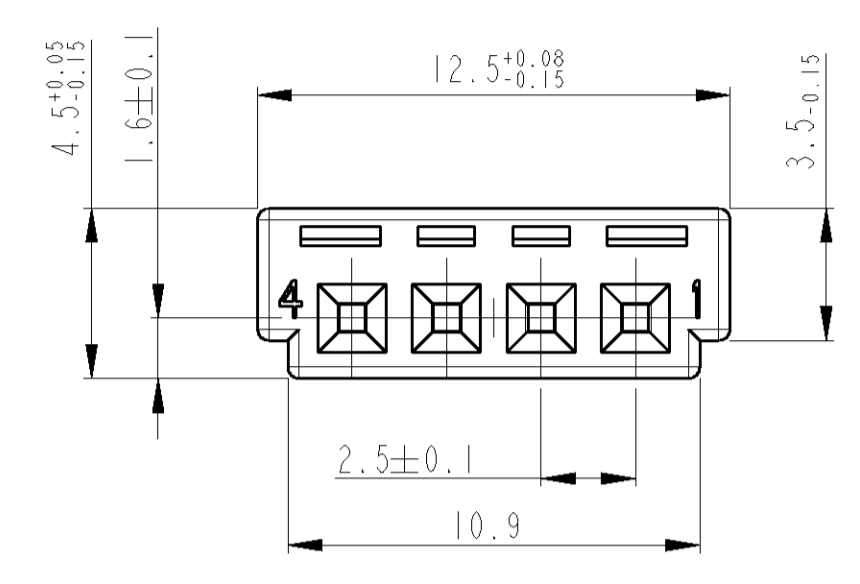


| LOC | DIST | P | LTR | REVISIONS ÄNDERUNGEN DESCRIPTION BESCHREIBUNG | DATE | DWN | APVD |
|-----|------|----|-----|--|-----------|-----|------|
| A1 | - | | | NEW DRAWINGS | 04MAR02 | GF | BK |
| | | A1 | | ToI.: DIN 16901-140 war DIN 16901-120 | 11JUL2002 | GF | BL |
| | | A3 | | update drawing | 10JAN2003 | PS | BL |
| | | A4 | | I-...-1 ACTIVATED | 02JUN2003 | GF | BL |



Bemerkungen

- Verwendet mit Verriegelung 1534149
- Gegenstecker nach Zeichnung 114-18491
- Passende Kontakte 1355717 (DGB 0.14 - 0.22 mm²)
928999 (DGB 0.20 - 0.50 mm²)
963715 (DGB 0.75 mm²)
- Passender Gegenstecker 1534156

NOTES

- USED WITH RETAINER 1534149
- MATING PART EXECUTION ACC. TO DRAWING 114-18491
- SUITABLE CONTACTS 1355717 (WIRE RANGE 0.14 - 0.22 mm²)
928999 (WIRE RANGE 0.20 - 0.50 mm²)
963715 (WIRE RANGE 0.75 mm²)
- SUITABLE MATING PART 1534156

PARTS PROVIDED, BUT TILL NOW NOT ORDERED !
 Teile vorgesehen, aber noch nicht beauftragt !

| ORDER-NO. Bestell-Nr. | COD. | REV. | QTY. | ITEM NO. | MATERIAL | COLOUR FARBE | DESCRIPTION Benennung |
|--------------------------|------|------|------|----------|----------|-----------------|--------------------------|
| 1-1534150-3 | C | A | 1 | 1 | PBT-GF10 | RED/rot | REC.HSG./ Bu.-Geh. |
| 1-1534150-2 | B | A | 1 | 1 | PBT-GF10 | BROWN/braun | REC.HSG./ Bu.-Geh. |
| 1-1534150-1 | A | A | 1 | 1 | PBT-GF10 | BLACK/schwarz | REC.HSG./ Bu.-Geh. |

| | | | | | | | |
|--|--|--|--|---|--|---|--|
| DIMENSIONS: MASSEINHEITEN: TITEL | | TOLERANCES: UNLESS OTHERWISE SPECIFIED: ALLSEITE INTOLERANZEN | | DWN G. Fischer 04MAR02 | | NAME tyco Electronics AMP GmbH D - 64625 Bensheim | |
| ACC. TO 1. PLC ±0.10 2. PLC ±0.15 3. PLC ±0.20 NOMINAL DIM | | ACC. TO 1. DIN 16901-140 2. ELECTRIC TO 3. NOMINAL DIM | | PRODUCT SPEC PRODUKTSPEZ. APPLICATION SPEC. VERARBEITUNGSSPEZ. | | tyco Esconics REC.HSG., 4 POSN., MOS Buchsengehäuse, 4 pol., MOS | |
| MATERIAL - | | FINISH/OBERFLÄCHE/FARBE - | | WEIGHT GEWICHT - | | SIZE CAGE CODE DRAWING NO. ZEICHNUNGS-NR. A1 00779 1534150 | |
| CUSTOMER DRAWING /KUNDENZEICHNUNG | | | | SCALE MASSSTAB 5:1 | | SHEET BLATT 1 OF 1 | |