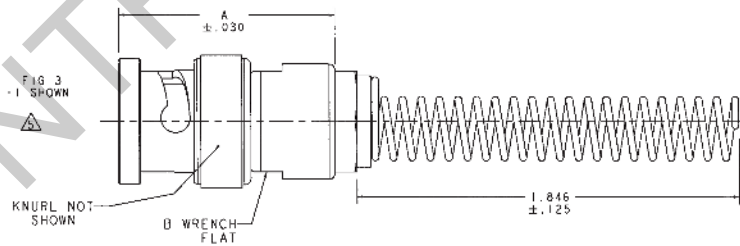
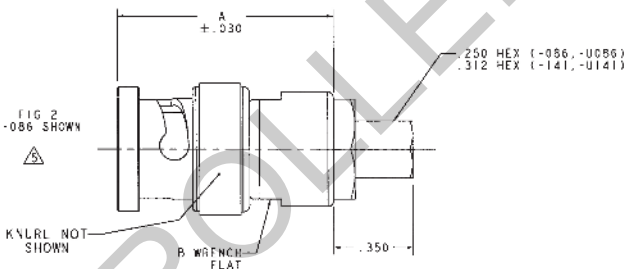
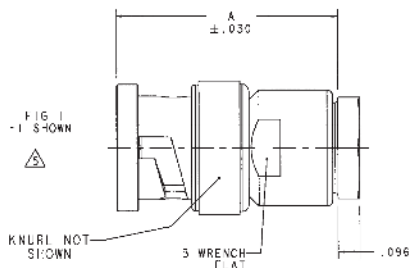
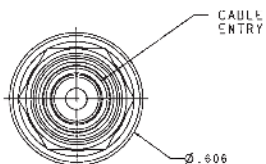
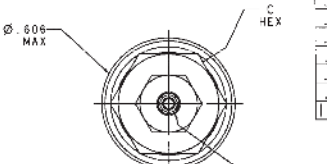
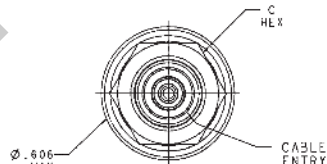


RED INDICATES ORIGINAL

DASH NO	FIG	CABLES ACCOMMODATED	A DIM	B FLATS	C HEX	ASSEMBLY PER
-1		RG-58				
-U1		ESSEX 621-715				
-2		RG-59				
-U2		BELDEN 8279				
-2A		AT&T 730A				
-U2A						
-2B						
-3		RG-223				
-U3		RG-55	.931	.437	.437	TAI-01
-3A		RG-22				
-4		BELDEN 8218				
-U4		RG-74				
-5		RG-87				
-U5		RG-96				
-5A		HEWLETT-PACKARD 8120-1107				
-U5A						
-5B						
-U5B						
-6		BELDEN 9231				
-U6		RG-5	.988	.500	.500	TAI-119
-6E		RG-6				
-U6E		RG-303				
-7						
-U7		RG-180				
-72						
-U72		GRUYMAN GC875GPI				
-31		RG-187 DBL SHLD				
-U31		BELDEN 8228	.931	.437	.437	TAI-101
-34		275-3991 MICRODOT				
-U34		616-569 AMPEX				
-36		810 RAYCHEM				
-J36		RG-304				
-37		9248 BELDEN				
-U37		BRAND-REX 6749	.988	.500	.500	TAI-119
-41		GORE C06C032				
-U41		88281 BELDEN				
-44		89120 BELDEN				
-U44		89555 BELDEN				
-51		734A AT&T	.931	.437	.437	TAI-101
-U51						
-52						
-U52						
-53						
-U53						
-63						
-U63						
-086						
-U086						
-141						
-U141						



REVISONS		1-0169	SH 1C
REV	LOC NO	DESCRIPTION	DATE
AE	11583	DASH NO CORR. TO 11583. SHEET 2. MADE CORRECTION IN 1-1 SECTION VIEW. SEE LOG.	10-22-73



INCH	MM
.005	0.13
.030	0.76
.096	2.44
.125	3.18
.250	6.35
.312	7.92
.350	8.89
.437	11.0
.500	12.70
.606	15.39
.931	23.65
.988	25.10
1.846	46.89

- IF BEND RELIEF SPRING REQUIRED ADD SUFFIX "SR" TO MODEL NO. (SEE FIG 3) (NOT AVAILABLE WITH CABLE GROUPS -6, -U6, -6E, -LEE, -51, -U51, -52, -U52, -63, -U63, -086, -U086, -141 & -U141)
- BNC COAXIAL CABLE PLUG BOTH 50 & 75 OHM VERSIONS
- DASH NO DENOTES CABLE GROUP EXCEPT "U" PREFIX DENOTES 75 OHM VERSION
- FINISH: TFS-1A(NICKEL)(TOTAL BUILD-UP .000180-.000450)
- ALL DIM ARE IN INCHES

- FOR CABLE GROUPS -1 & -U1 SUPPLY 1 EA ACA1
- FOR CABLE GROUPS -2 & -U2 SUPPLY 1 EA ACA2
- FOR CABLE GROUPS -5 & -U5 SUPPLY 1 EA ACA5
- MAY BE ASSEMBLED TO CABLE/CONNECTOR ASSY USING 3M SCOTCHGRIP NO. 1099 PLASTIC ADHESIVE, OR EQUIV.

- IF PLASTIC STRAIN RELIEF REQUIRED, ADD SUFFIX "ST" TO MODEL NO. (ONLY AVAILABLE WITH: -1, -U1, -2, -U2, -5, -U5)

110-0363				DESCRIPTION	PART NUMBER	ITEM
12-09	105-1064	1-0294	110-0022	TOL UNLESS SPECIFIED	PL20/BR/	
05-0717	105-0870	1-0204	1-0227		UPL20/BR	
305-0541	105-0668	1-0212	105-3944			
105-0158	105-0697	1-0215	105-3007			
305-0383	105-0659	1-0216	105-2449			
305-0187	105-0461	1-0218	105-2364			
105-1316	105-0295	1-0220	1-0504			
NEXT ASSY						

TROMPETER
BY CONSISTENCY

DWG: 1SR 6-26-98
CHK: [Signature]
FRGR: [Signature]

MATERIAL: [Blank]
CODE IDENT: 14949
DRAWING NO.: I-0369
DATE: 10-22-73 SHEET 1C