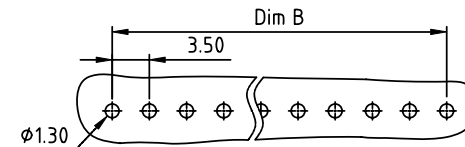
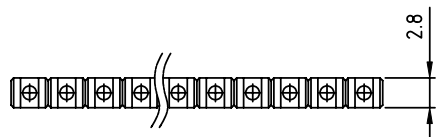
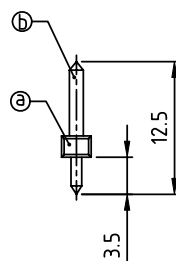
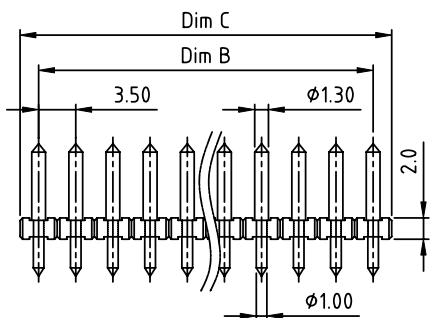


PRODUCT NUMBER	PITCH
OPxx22x000J0G	3.50 mm



RECOMMENDED P.C.B LAYOUT
TOP VIEW



- Material:
- Item (a) Housing: Thermoplastic, Black color (UL94V-0)
 - Item (b) Contact pin: Brass, Tin or Au plated.

- Electrical:
- Voltage rating: 300V
 - Current rating: 10A
 - Withstanding Voltage: 1.6KV
 - Operating temperature: -40°C to +115°C
 - Soldering temperature: 260°C±5°C/5 Sec
 - Safety Approval:

DIMENSION

Dim B	(N-1)×3.50
Dim C	N×3.50

N=Number of poles

Poles	Tolerance
2p-5p	±0.10
6p-9p	±0.15
10p-13p	±0.20
14p-17p	±0.25
18p-24p	±0.30

PART NO.: OP xx 22 x 0 00J0 G

- Solid block
- No. of poles
- 02 2 poles
- 03 3 poles
-
- 24 24 poles
- 0 Tin plating 120u" Min
- 1 Gold plating 10u"
- 2 Gold flash
- RoHS compliant (lead<4%)
- In copper Alloy

mat'l. code		surface ASME Y14.5	tolerance ASME Y14.5	projection 	product family TERMINAL BLOCK
ltr	ecn no	dr	date	tolerances unless otherwise specified	title TERMINAL BLOCK
				angles 	scale PLUGGABLE SOCKET, VERTICAL, 12.5mm HEIGHT
				X°±1'	MM
				dr	dwg no
				ENGR	sheet 1 of 1
				EVIN ZHONG	size
				041714	A4
				chr	OPxx22x000J0G
				HANKE FENG	type
				041714	CUSTOMER Drawing
				appd	
				SHI JUN	
sheet index	revision	A			
	sheet	1			