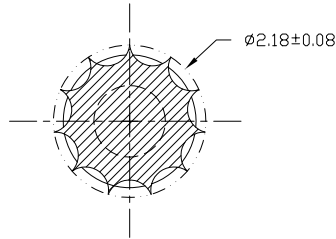
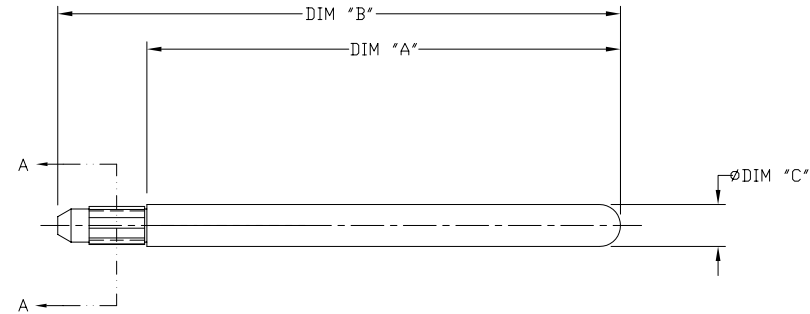


PRODUCT NUMBER	DIM "A"	DIM "B"	DIM "C"	LF OPTION
74749-101	27.10	32.20	2.40	NOTE 4
74749-102 **	10.00	15.10		
74749-202 **	10.00	15.10	3.43	

** CUSTOMER SPECIAL - THIS PART WILL NOT WORK IN ALL APPLICATIONS.

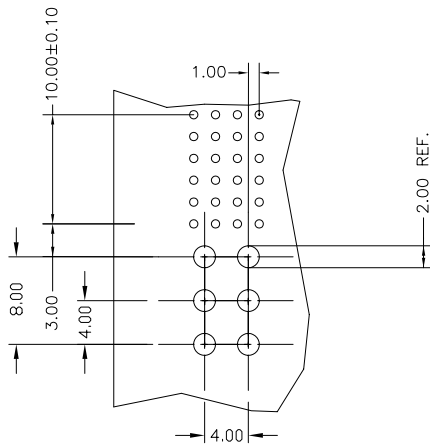


SECTION A - A
SCALE 4:1



NOTES:

- MATERIAL: STAINLESS STEEL, TYPE 303.
FINISH: PASSIVATED.
- THIS GUIDE PIN IS INTENDED TO BE INSERTED INTO A 2.00±.08 NONPLATED THROUGH HOLE.
- THIS KEYING PIN IS TO BE USED WITH RECEPTACLE P/N 88916.
- ADD 'LF' SUFFIX AT THE END OF PART NUMBER FOR LEAD FREE OPTION.
- THIS PRODUCT MEETS EUROPEAN UNION DIRECTIVES AND OTHER COUNTRY REGULATION AS DESCRIBED IN GS-22-008.



RECOMMENDED HOLE PATTERN
COMPONENT SIDE

mat'l. code SEE NOTE 1		surface ISO 1302 ✓		tolerance ISO 406 ISO 1101		projection MM		product family METRAL (tm)	
ltr		ecn no		date		tolerances unless otherwise specified		title	
A	V80809	MDF	4/24/98	angles	linear	.X±0.3 .XX±0.13 .XXX±0.051		PRESS-FIT KEYING PLUG PIN	
B	V81424	GCR	8/18/98			scale 3:1		dwg no 74749	
C	V20723	CGD	4/15/02	σ±2'				sheet 1 of 1 size A3	
D	V21645	TAB	10/15/02	dr		M. FETROW 4/24/98		FCI	
E	V04-0068	HTB	2/06/04	enfr		C. PENDLETON 4/24/98		type Product Customer Drawing	
F	M06-0286	MNR	7/27/06	chr		C. PENDLETON 4/24/98			
G	M06-0400	MHT	10/10/06	appd		C. PENDLETON 4/24/98			
sheet index	revision	G							
sheet	sheet	1							