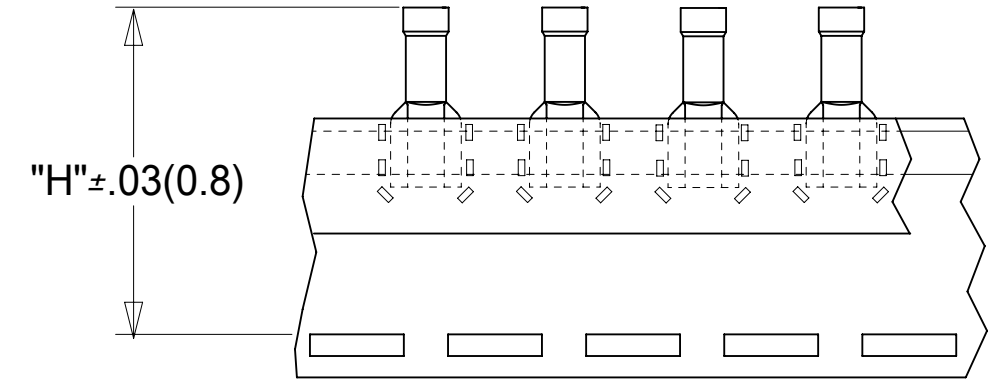
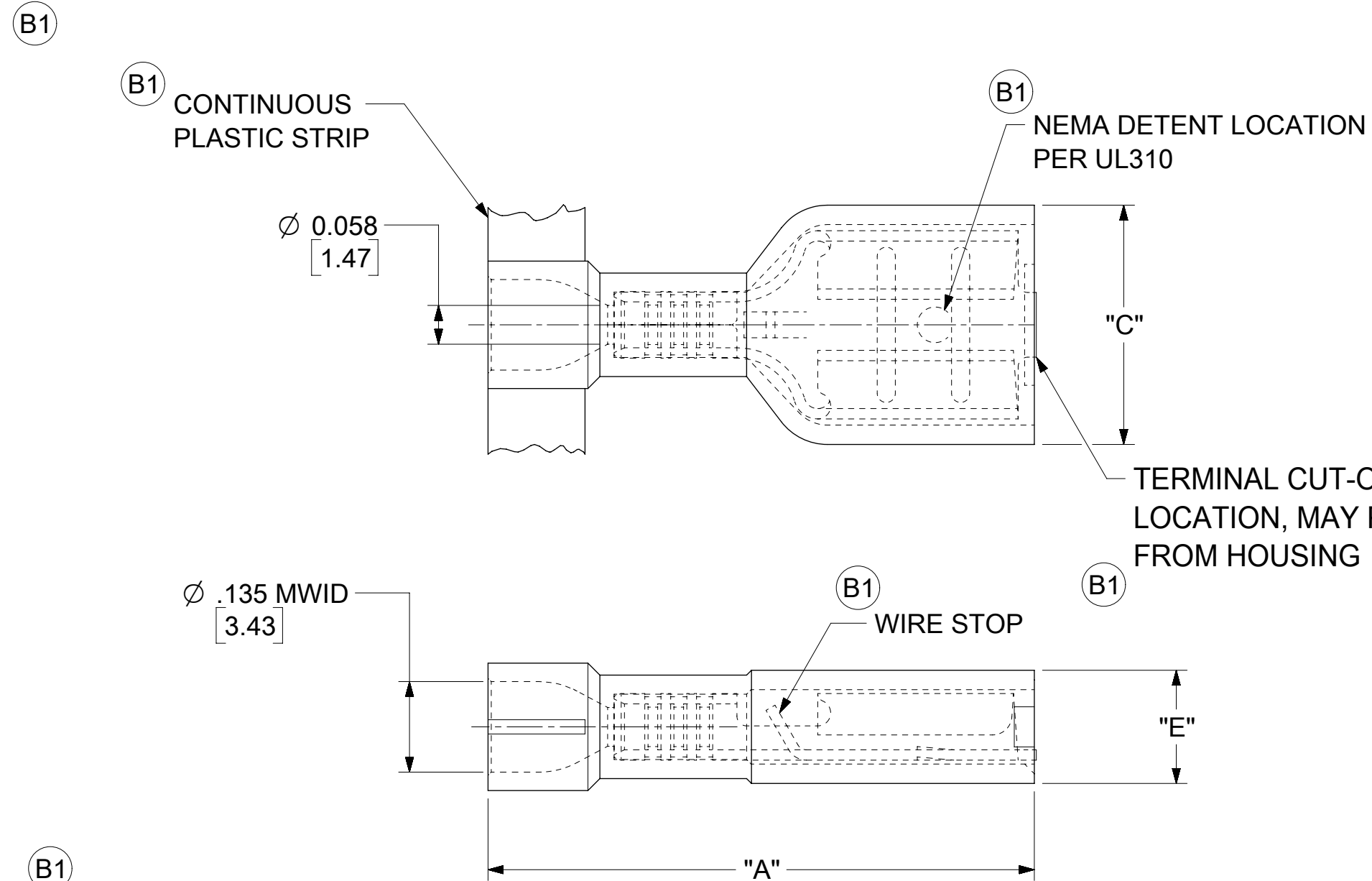


10	9	8	7	6	5	4	3			
LOOSE PIECE MAT'L NO.	LOOSE PIECE ENGRNG NO.	CONTINUOUS STRIP MAT'L NO.	CONTINUOUS STRIP ENGRNG NO.	TAPE MAT'L NO.	TAPE ENGRNG NO.	FITS MALE TAB SIZE	"A" MAX	"C" MAX	"E" MAX	"H" NOMINAL
190030126	AA-2202V	190030128	AA-2202VC	190030127	AA-2202VT	.187 X .020	.78 (19.8)	.316 (8.03)	.160 (4.06)	1.38 (35.1)
190030129	AA-2203V	190030131	AA-2203VC	190030130	AA-2203VT	.187 X .032	.78 (19.8)	.316 (8.03)	.160 (4.06)	1.38 (35.1)
190030005	AA-2201VN	190030111	AA-2201VNC	190030007	AA-2201VNT	.250 X .032	.86 (21.8)	.380 (9.65)	.180 (4.57)	1.42 (35.6)



- B1** NOTE(S):
- MATERIAL:  
 TERMINAL: BRASS .016/ 0.41  
 PLATING: ELECTRO-TIN  
 INSULATION: NYLON 6/6 94V-0 RATING  
 COLOR: RED
  - MWID = MAXIMUM WIRE INSULATION DIAMETER.
  - PRODUCT SPECIFICATION: PS-19902-008
  - PARTS ARE RoHS COMPLIANT.

SYMBOLS	THIS DRAWING CONTAINS INFORMATION THAT IS PROPRIETARY TO MOLEX ELECTRONIC TECHNOLOGIES, LLC AND SHOULD NOT BE USED WITHOUT WRITTEN PERMISSION		CURRENT REV DESC: ADD TERM CUTOFF		
	DIMENSION UNITS	SCALE	NOTE		
▽ = 0	IN/MM	NTS			EC NO: 607062 DRWN: DMYRICK 2018/11/01 CHK'D: JMACNEIL 2018/11/02 APPR: JMACNEIL 2018/11/02
▽ = 0	GENERAL TOLERANCES (UNLESS SPECIFIED)				
▽ = 0		MM	INCH		INITIAL REVISION: DRWN: HBEITZEL 2001/06/11 APPR: RDEROSS 2001/06/11
▽ = 0	4 PLACES ±				
▽ = 0	3 PLACES ±		± 0.005		DOCUMENT NUMBER: SD-19003-001 DOC TYPE: PSD DOC PART: 001 REVISION: B1
▽ = 0	2 PLACES ±	0.13	± 0.01		
▽ = 0	1 PLACE ±	0.25			
▽ = 0	0 PLACES ±				
▽ = 0	ANGULAR TOL	± °			
▽ = 0	DRAFT WHERE APPLICABLE MUST REMAIN WITHIN DIMENSIONS	THIRD ANGLE PROJECTION	DRAWING	SERIES	MATERIAL NUMBER
▽ = 0			B-SIZE	19003	SEE CHART
					CUSTOMER
					GENERAL MARKET
					SHEET NUMBER
					1 OF 1