

32.768kHz SMD Low ESR Crystal

ABS07-LR

Request Samples



Check Inventory



3.2 x 1.5 x 0.9 mm
RoHS/RoHS II Compliant
MSL Level = N/A



Features

- Guaranteed ESR of 50kΩ maximum for low power designs
- 0.9mm height ideal for high density circuit boards
- Seam sealed ceramic package offers excellent environmental & heat resistance
- Extended operating temperature of -40°C to +85°C for industrial applications

Applications

- Power sensitive designs requiring low ESR crystal
- Communication & measurement equipment
- Commercial, consumer & industrial applications
- Wireless communications

Key Electrical Specifications

Parameters	Min.	Typ.	Max.	Units	Notes
Frequency	32.768			kHz	
Operation Mode	Flexural Mode (Tuning Fork)			°C	
Operating Temperature	-40		+85	°C	
Storage Temperature	-55		+125	°C	
Frequency Tolerance @+25°C	-20		+20	ppm	See options
Temperature Coefficient:	-0.040	-0.034	-0.028	ppm/°C ²	
Turn-over temperature:	+20	+25	+30	°C	
Equivalent series resistance @+25°C			50	kΩ	
Shunt capacitance (C0)		1.3		pF	
Load capacitance (CL)		6		pF	
Drive Level		0.1	0.5	μW	
Q value		25000			
Aging@25°C±3°C	-3		3	ppm	First year
Insulation Resistance	500			MΩ	@ 100Vdc ± 15V



5101 Hidden Creek Ln Spicewood TX 78669
Phone: 512-371-6159 | Fax: 512-351-8858
For terms and conditions of sales, please visit:
www.abracon.com

REVISED: 02-10-23

ABRACON IS
ISO9001-2015
CERTIFIED

32.768kHz SMD Low ESR Crystal

ABS07-LR

Request Samples



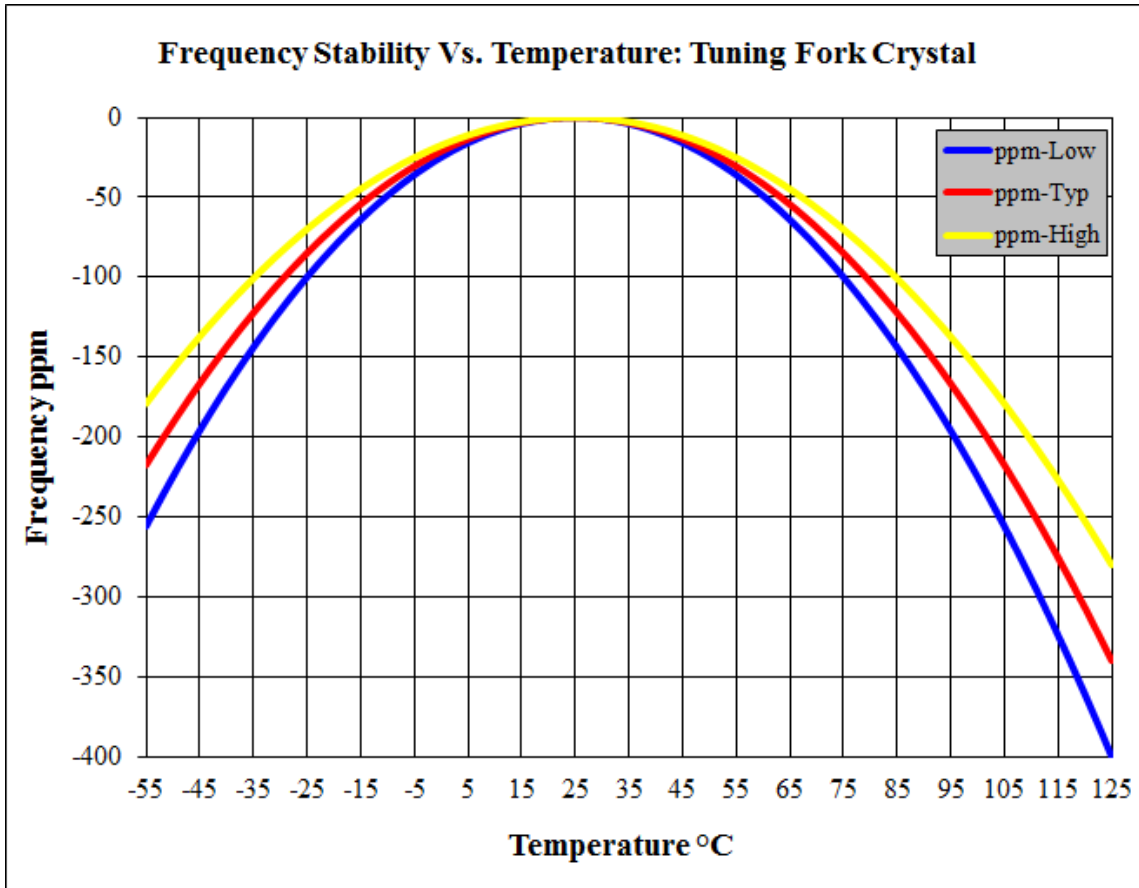
Check Inventory



3.2 x 1.5 x 0.9 mm
RoHS/RoHS II Compliant
 MSL Level = N/A



Typical Frequency vs. Temperature Characteristics



Options and Part Identification (left blank if standard)

ABS07-LR-32.768 kHz-6- -

Freq. Tolerance
Blank: ±20ppm
1: ±10ppm

Packaging
Blank: Bulk
T: Tape & Reel (3000pcs/reel)



5101 Hidden Creek Ln Spicewood TX 78669
 Phone: 512-371-6159 | Fax: 512-351-8858
 For terms and conditions of sales, please visit:
www.abracon.com

REVISED: 02-10-23

ABRACON IS
 ISO9001-2015
 CERTIFIED

32.768kHz SMD Low ESR Crystal

ABS07-LR

Request Samples



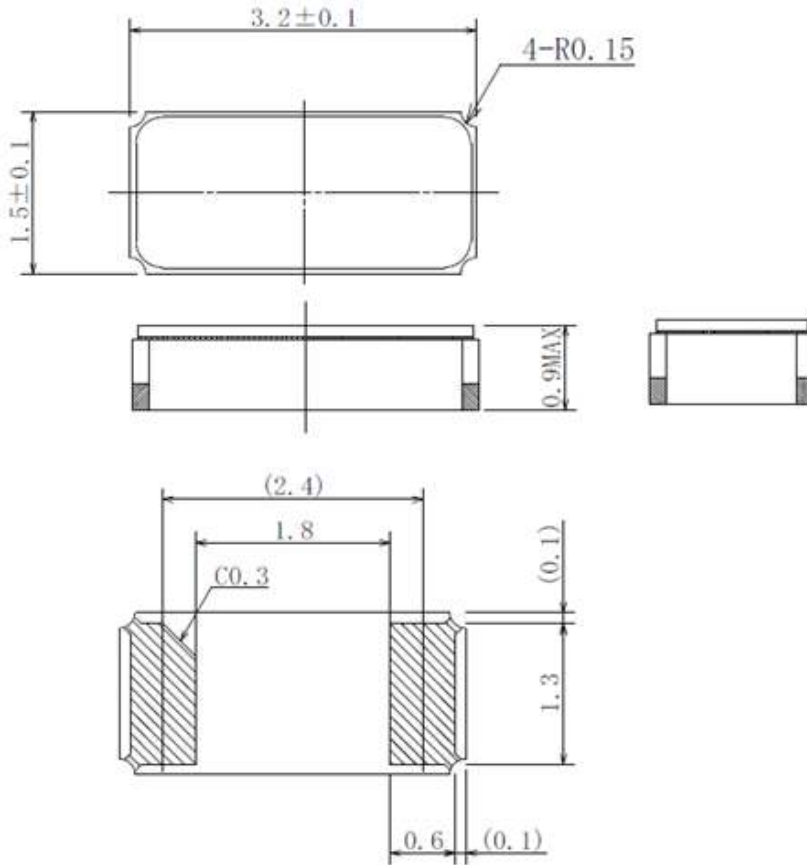
Check Inventory



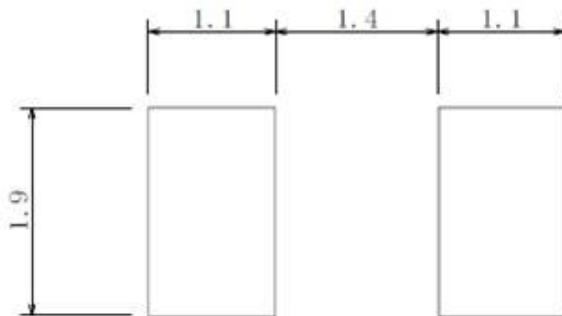
3.2 x 1.5 x 0.9 mm
RoHS/RoHS II Compliant
MSL Level = N/A



Mechanical Dimensions



Recommended Land Pattern



Dimensions: mm

32.768kHz SMD Low ESR Crystal

ABS07-LR

Request Samples



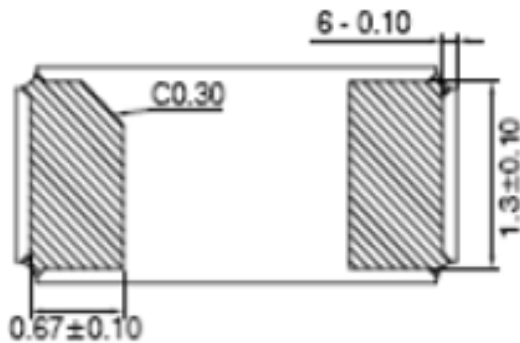
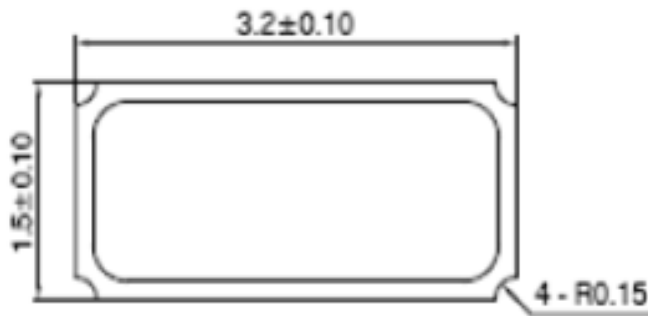
Check Inventory



3.2 x 1.5 x 0.9 mm
RoHS/RoHS II Compliant
MSL Level = N/A



Alternative Mechanical Dimensions #1:



Dimensions: mm

Sealing Method = Seam Sealing

32.768kHz SMD Low ESR Crystal

ABS07-LR

Request Samples



Check Inventory



3.2 x 1.5 x 0.9 mm
RoHS/RoHS II Compliant
MSL Level = N/A



Reflow Profile [JEDEC J-STD-020]

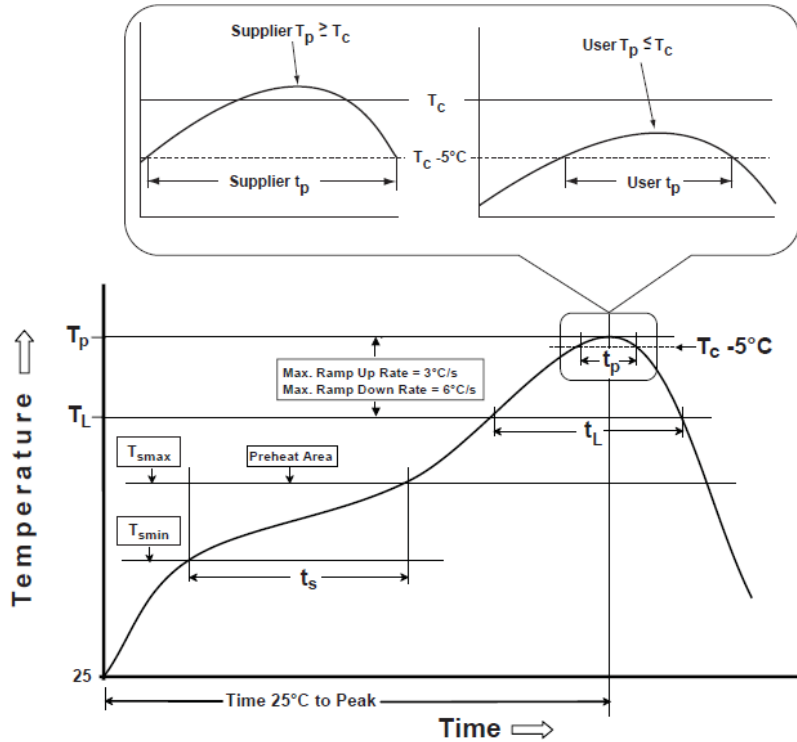


Table 1

SnPb Eutectic Process
Classification Temperatures (T_c)

Package Thickness	Volume mm ³ <350	Volume mm ³ ≥350
<2.5 mm	235 °C	220 °C
≥2.5 mm	220 °C	220 °C

Table 2

Pb-Free Process
Classification Temperatures (T_c)

Package Thickness	Volume mm ³ <350	Volume mm ³ 350-2000	Volume mm ³ >2000
<1.6 mm	260 °C	260 °C	260 °C
1.6 mm - 2.5 mm	260 °C	250 °C	245 °C
>2.5 mm	250 °C	245 °C	245 °C

Profile Feature	Sn-Pb Eutectic Assembly	Pb-Free Assembly
Preheat / soak		
Temperature minimum (T_{smin})	100°C	150°C
Temperature maximum (T_{smax})	150°C	200°C
Time (T_{smin} to T_{smax}) (t_s)	60 - 120 sec.	60 - 120 sec.
Average ramp-up rate (T_{smax} to T_p)	3°C/sec. max	3°C/sec. max
Liquidous temperature (T_L)	183°C	217°C
Time at liquidous (t_L)	60 - 150 sec.	60 - 150 sec.
Peak package body temperature (T_p)*	see Table 1	see Table 2
Time (t_p)** within 5°C of the specified classification temperature (T_c)	20 sec.	30 sec.
Ramp-down rate (T_p to T_{smax})	6°C/sec. max	6°C/sec. max
Time 25°C to peak temperature	6 min. max	8 min. max
Reflow cycles	2 max	2 max

*Tolerance for peak profile temperature (T_p) is defined as a supplier minimum and a user maximum.

**Tolerance for time at peak profile temperature (t_p) is defined as supplier minimum and a user maximum.



5101 Hidden Creek Ln Spicewood TX 78669
Phone: 512-371-6159 | Fax: 512-351-8858
For terms and conditions of sales, please visit:
www.abracon.com

REVISED: 02-10-23

ABRACON IS
ISO9001-2015
CERTIFIED

32.768kHz SMD Low ESR Crystal

ABS07-LR

Request Samples



Check Inventory

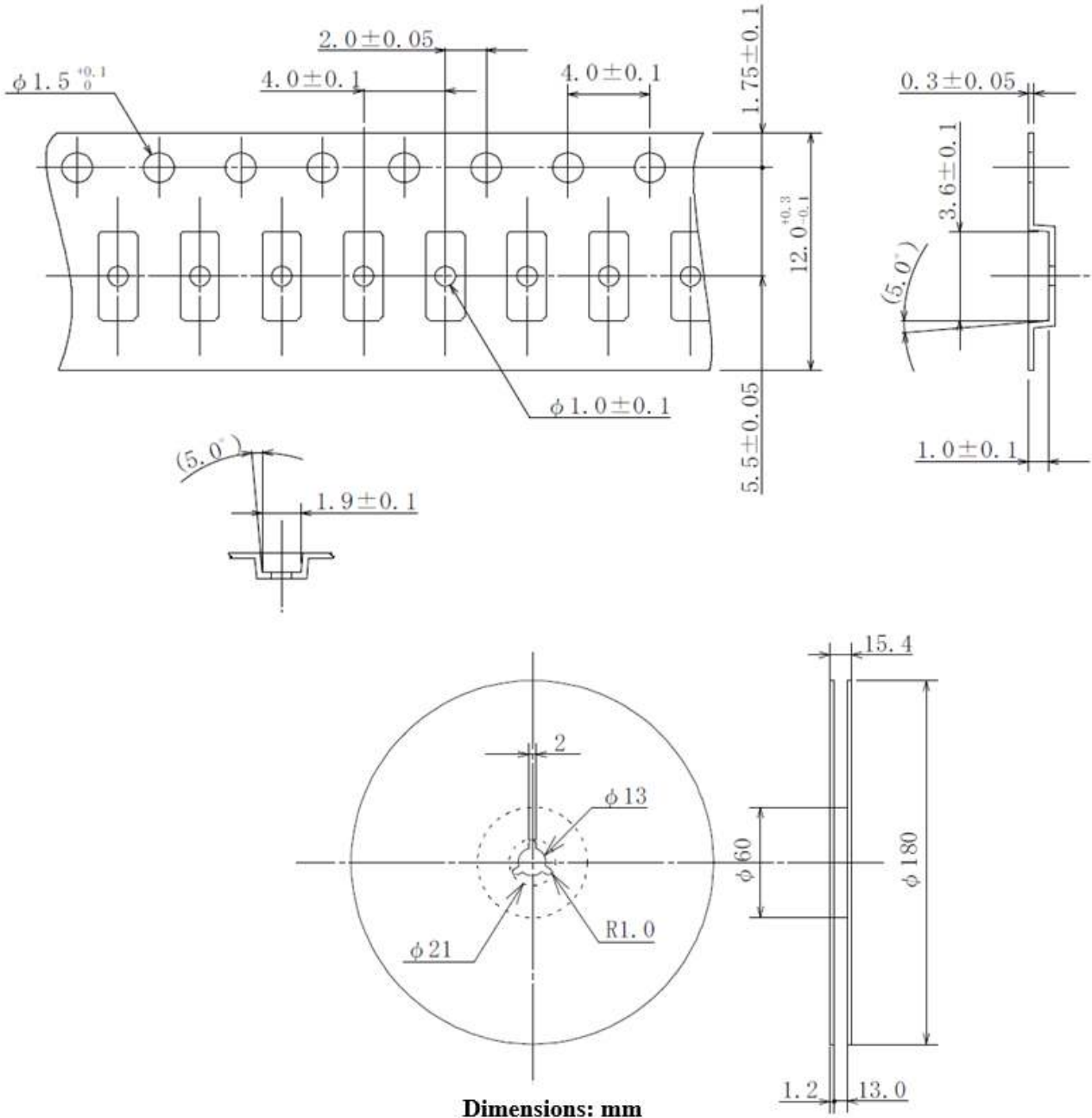


3.2 x 1.5 x 0.9 mm
 RoHS/RoHS II Compliant
 MSL Level = N/A



Packaging:

T=Tape and reel (3,000pcs/reel)



ATTENTION: Abracon LLC's products are COTS – Commercial-Off-The-Shelf products; suitable for Commercial, Industrial and, where designated, Automotive Applications. Abracon's products are not specifically designed for Military, Aviation, Aerospace, Life-dependent Medical applications or any application requiring high reliability where component failure could result in loss of life and/or property. For applications requiring high reliability and/or presenting an extreme operating environment, written consent and authorization from Abracon LLC is required. Please contact Abracon LLC for more information.



5101 Hidden Creek Ln Spicewood TX 78669
 Phone: 512-371-6159 | Fax: 512-351-8858
 For terms and conditions of sales, please visit:
www.abracon.com

REVISED: 02-10-23

ABRACON IS
 ISO9001-2015
 CERTIFIED