



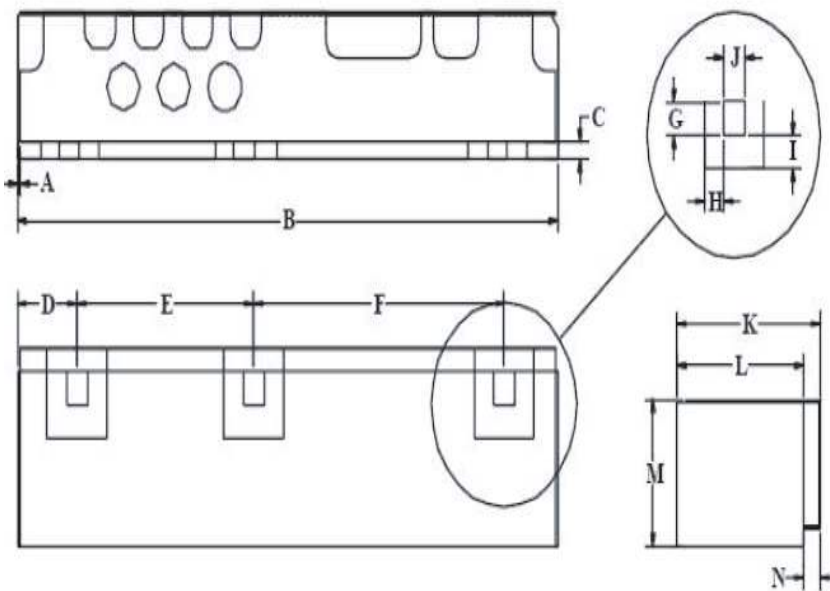
| <u>Characteristics</u> | <u>Band 1</u> | <u>Band 2</u> |
|----------------------------------|---------------|---------------|
| Passband: | 1850-1910 MHz | 1930-1990 MHz |
| Bandwidth: | 60 MHz | 60 MHz |
| Passband Return Loss: | 11 dB min | 11 dB min |
| Passband Insertion Loss: | 3.2 dB max | 3.7 dB max |
| Passband Ripple: | 2.6 dB max | 3.0 dB min |
| Input / Output Impedance: | 50 Ohms | 50 Ohms |
| Isolation: | 56 dB min | 47 dB min |
| Power Handling: | 2 W max | 2 W max |

| <u>Mechanical</u> | |
|-------------------------|------------------------|
| Mounting Method: | SMT |
| Dimensions: | 23.18 x 6.52 x 4.60 mm |

| <u>Environmental</u> | |
|-------------------------------|------------------|
| Operating Temperature: | -40 to +70 deg.C |
| Storage Temperature: | -50 to +90 deg.C |

This product is RoHs compliant.

Outline Drawing:



| Dim | Nominal (mm) | Tolerance (mm) +/- or max |
|-----|--------------|------------------------------|
| A | 0.25 | 0.25 |
| B | 23.18 | max |
| C | 0.33 | min |
| D | 2.50 | 0.25 |
| E | 7.43 | 0.13 |
| F | 10.52 | 0.13 |
| G | 1.00 | 0.13 |
| H | 0.80 | 0.13 |
| I | 1.00 | 0.13 |
| J | 0.90 | 0.13 |
| K | 6.52 | max |
| L | 5.51 | 0.13 |
| M | 4.60 | max |
| *N | 0.71 | 0.13 |

* Indicates Reference Only

Available at our Web store:

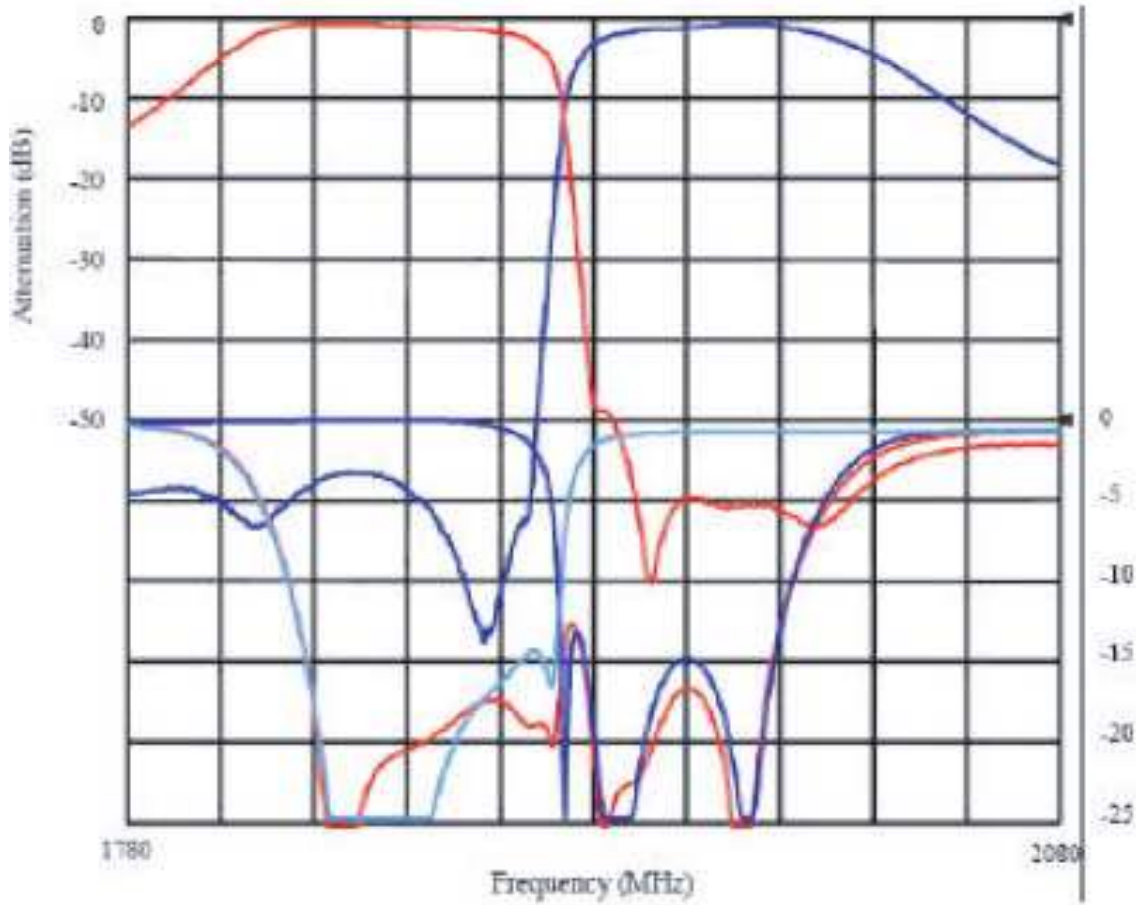


ANATECH ELECTRONICS INC
RF & Microwave Filters & Products

Part Number: AM1900D806



Response Plot:



Available at our Web store:

70 Outwater Lane Phone: (973) 772-4242
Garfield, NJ 07026 Fax : (973) 772-4646



Email: sales@anatechelectronics.com
Web: www.anatechelectronics.com