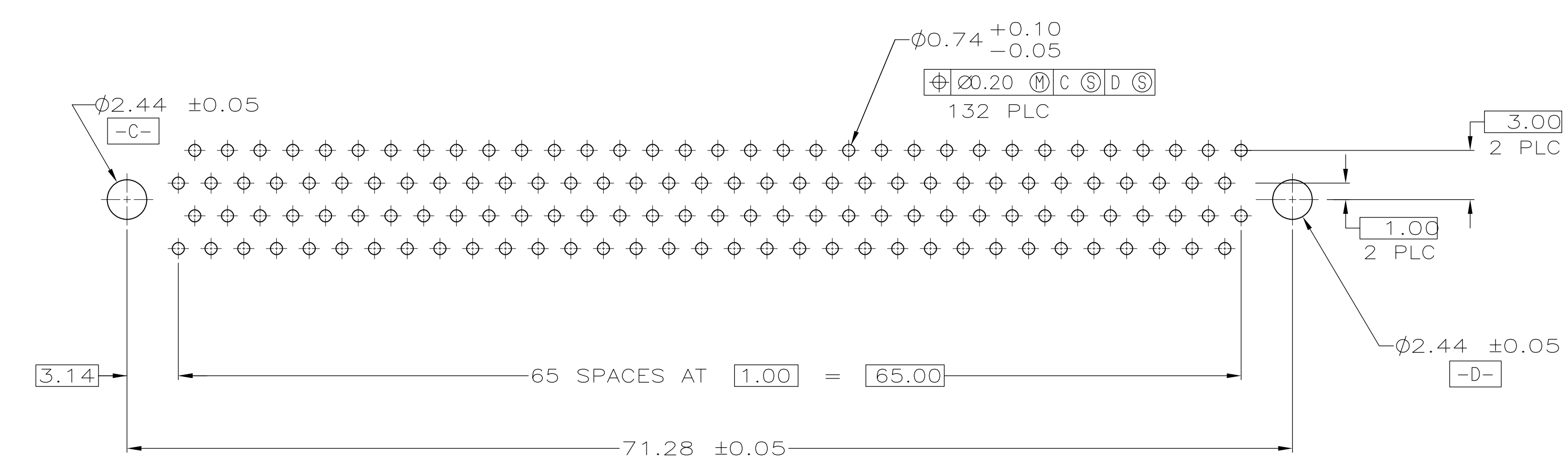
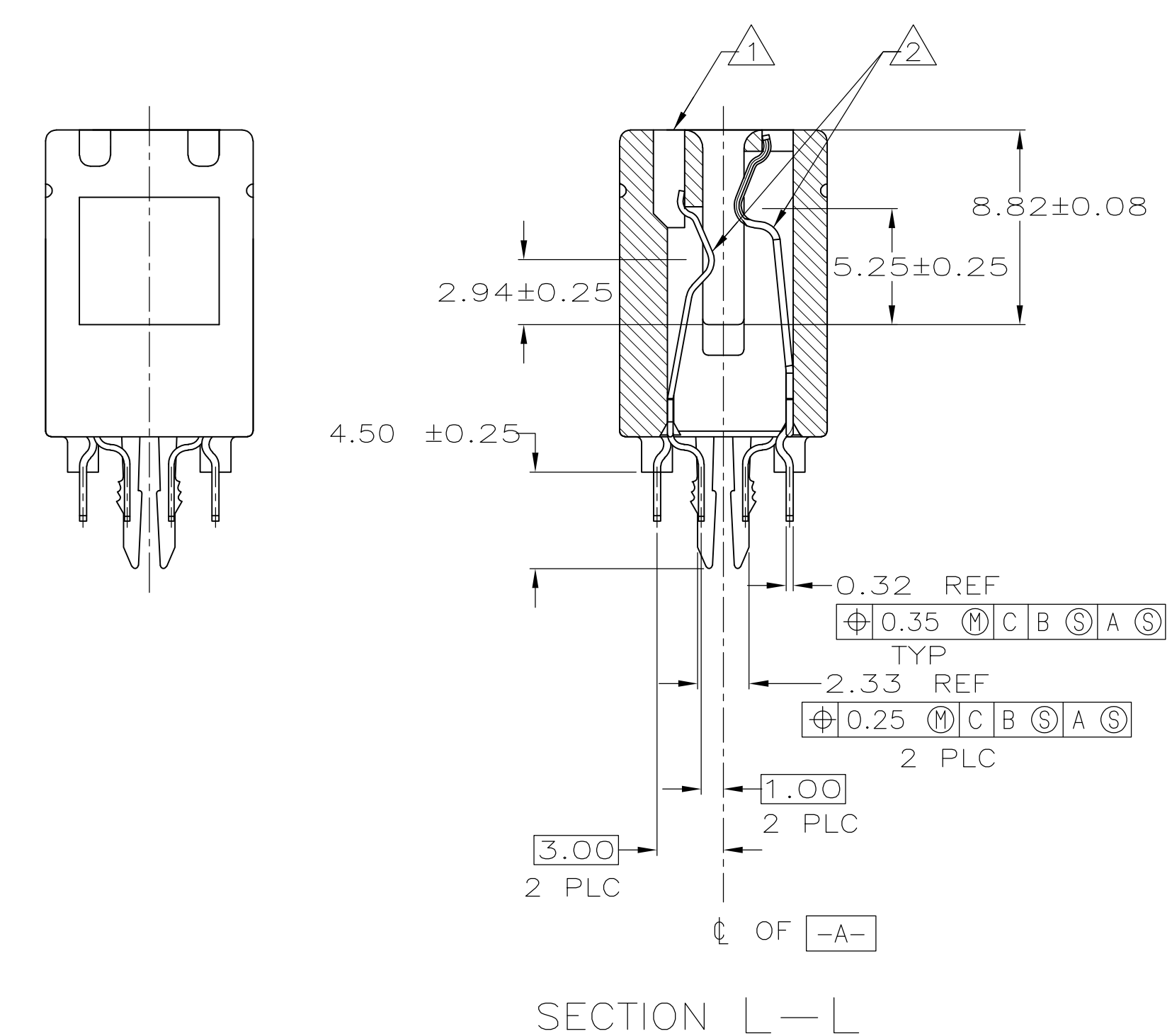
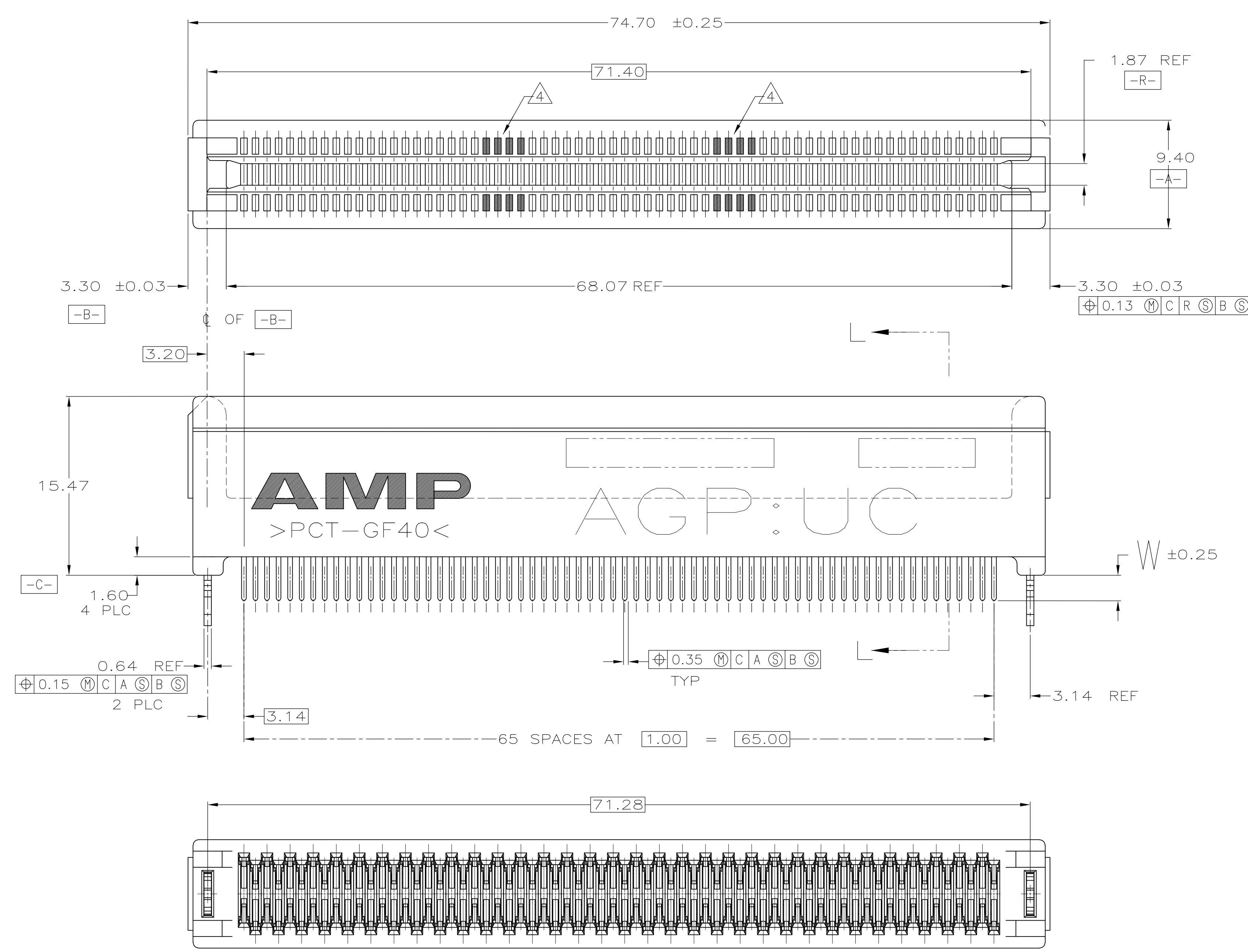


LOC		DIST		REVISIONS			
P	LTR	DESCRIPTION	DATE	OWN	APVD	DD	DD
C		REVISED PER OG51-0008-99	06APR99	RB			
D		REV PER OG51-0062-99	05/18/99	MM			
D1		REVISED ECR-09-010116	08MAY2009	AZ			
D2		REVISED PER ECO-09-020689	31AUG09	KK			



- 1 MATERIAL: HOUSING, THERMOPLASTIC, COLOR: BROWN. CONTACTS, PHOSPHOR BRONZE. HOLD-DOWNS, BRASS.
- 2 FINISH: CONTACTS, 1.27 MIN. MICROMETERS NICKEL ALL OVER, 0.38 MIN. MICROMETERS GOLD OVER NICKEL IN CONTACT AREA, 2.54 MIN MICROMETERS TIN-LEAD OVER NICKEL ON SOLDER TAILS.
- 3. REFER TO INTEL ACCELERATED GRAPHICS PORT INTERFACE SPECIFICATION FOR RECOMMENDED MATING PAD PATTERNS FOR AGP 1X, 2X AND 4X BOARDS.
- 4 SHADED CONTACT LOCATIONS ARE AT RISK OF DAMAGE DURING MATING AND UNMATING WITH AGP-1X AND AGP-2X/4X CIRCUITS.
- 5 FINISH: CONTACTS, 1.27 MIN. MICROMETERS NICKEL ALL OVER, 0.0254-0.0762 MICROMETERS GOLD OVER NICKEL IN CONTACT AREA. 2.54 MIN. MICROMETERS TIN-LEAD OVER NICKEL ON SOLDER TAILS.
- 6 OBSOLETE PARTS: OBSOLETE CIS STREAMLINING PER D.RENAUD/D.SINISI

\triangle OBSOLETE	\triangle	3.18	145376-6
\triangle OBSOLETE	\triangle	2.54	145376-5
	\triangle	3.18	145376-3
	\triangle	2.54	145376-2
\triangle OBSOLETE	\triangle	2.16	145376-1
		PLATING	W
			PART NO

THIS DRAWING IS A CONTROLLED DOCUMENT.		DWN R BROWN	6/25/98	AMP Incorporated Harrisburg, PA 17105-3608
DIMENSIONS: mm		CHK D DIXON	6/25/98	
TOLERANCES UNLESS OTHERWISE SPECIFIED:		APVD V RUMINSKI	6/25/98	
0 PLC ±- 1 PLC ±- 2 PLC ±0.13 3 PLC ±- 4 PLC ±-		NAME		
MATERIAL \triangle		FINISH $\triangle \triangle$		PRODUCT SPEC - APPLICATION SPEC - SIZE A1 CAGE CODE 00779 DRAWING NO C-145376
CUSTOMER DRAWING		SCALE 4:1	SHEET 1 OF 1	REV D2

RECOMMENED CONNECTOR MOUNTING HOLE PATTERN (CONNECTOR SIDE SHOWN)