

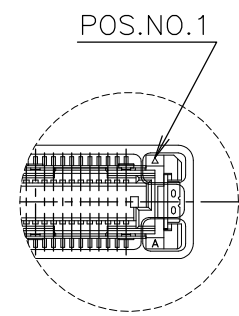
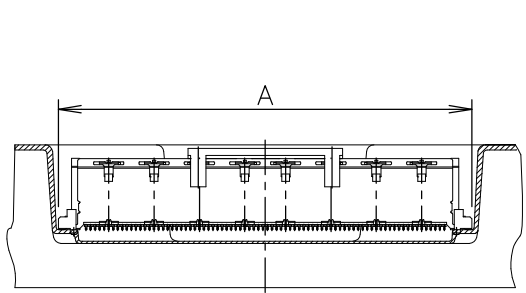
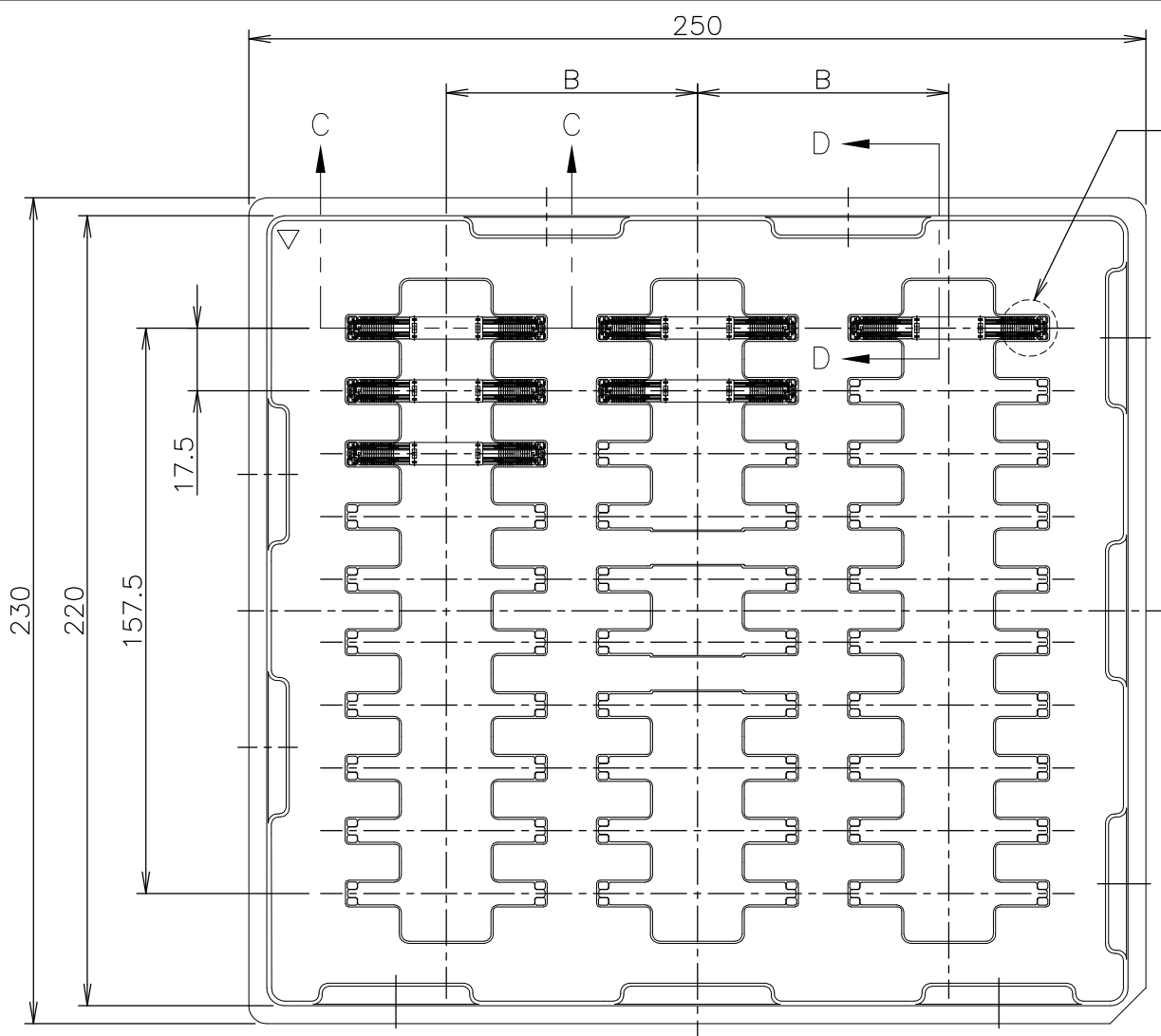
THIS DRAWING IS UNPUBLISHED. RELEASED FOR PUBLICATION APR, 1998.
 © COPYRIGHT 1998 BY TYCO ELECTRONICS CORPORATION. ALL RIGHTS RESERVED.

LOC J DIST

REVISIONS		DATE	DWN	APVD
P	LTR	DESCRIPTION		
A	REVISED	ECR-08-000339	01FEB08	T.T T.F

AS SHOWN: TYPE-1

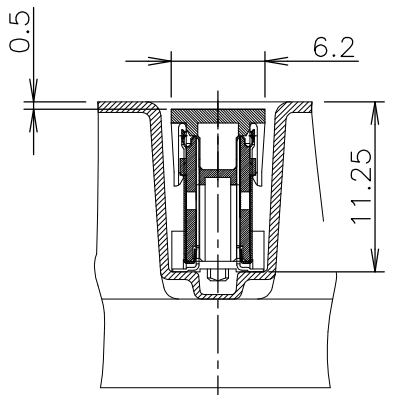
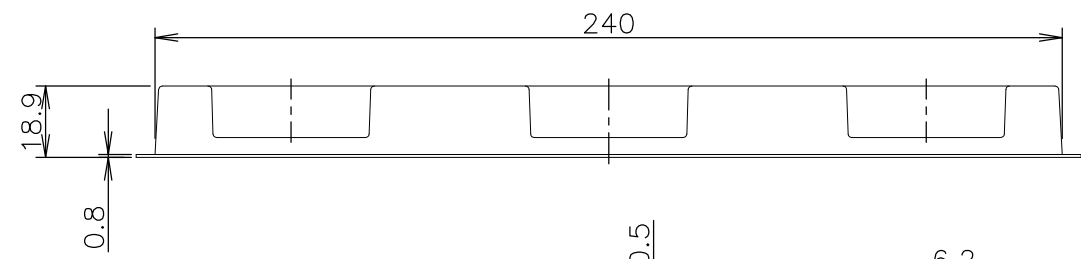
SEE DETAIL E



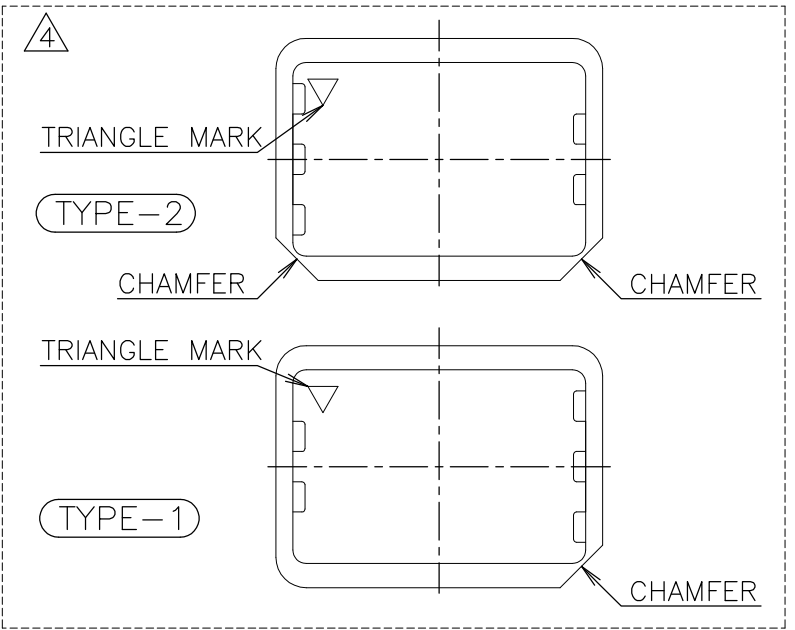
C-C (SCALE 1:1)

DETAIL E (SCALE 2:1)

⚠ TRAY TYPE-1 AND TYPE-2 MUST BE
 PILED UP BY TURNS.
 (REFER TO PACKING SPECIFICATIONS)



D-D (SCALE 2:1)



GENERAL TOLERANCE
 一般公差

10 ≥	±0.2
30 ≥	>10: ±0.25
100 ≥	>30: ±0.3
ANGLES: ±3°	

SEALANT	AVAILABLE	3	30	70	54.7	160	912074-4	6-6123845-1
SEALANT	TOOLING STATUS	LOW	QTY	B	A	POS.	TRAY P/N	PART NO.

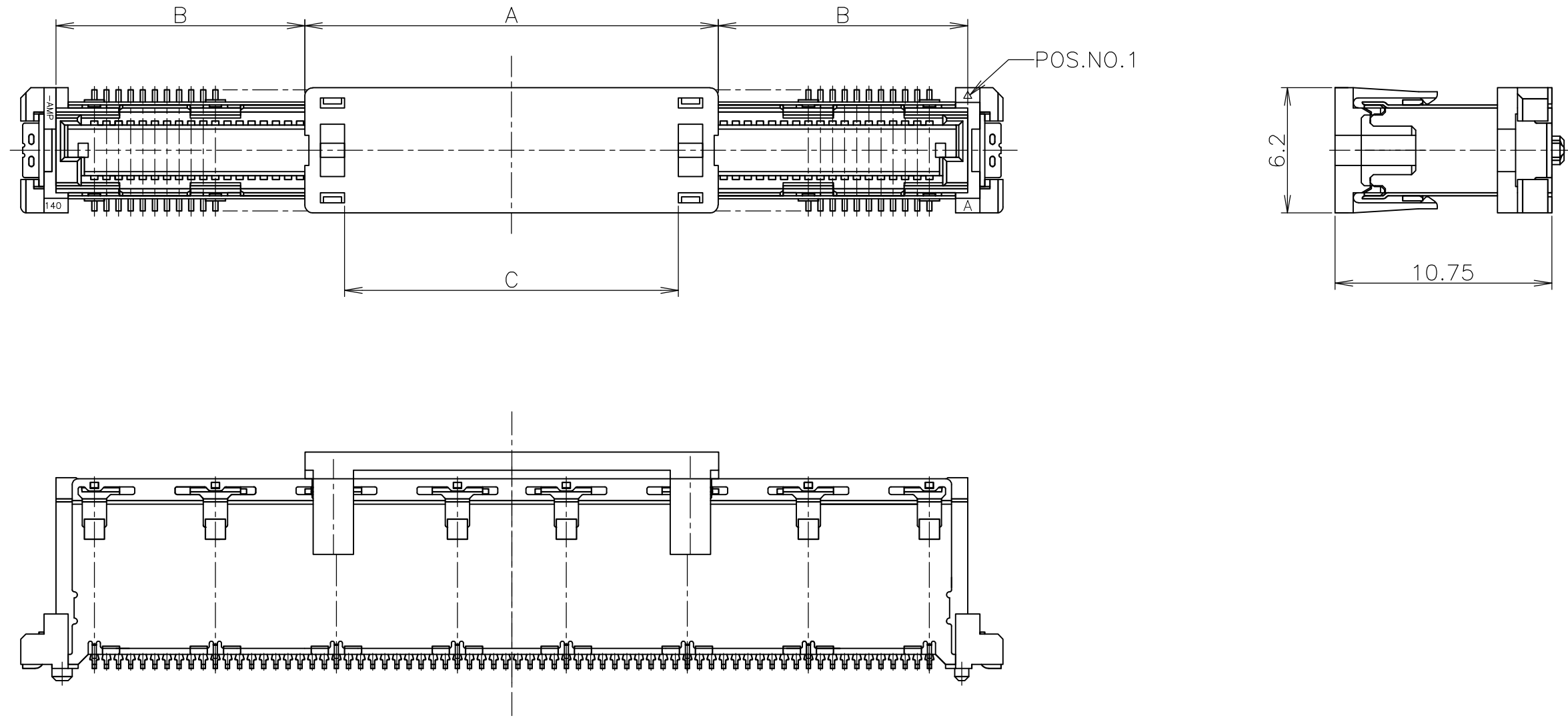
THIS DRAWING IS A CONTROLLED DOCUMENT.

DIMENSIONS: 单位: 耗 mm	TOLERANCES UNLESS OTHERWISE SPECIFIED: 一般公差
	0 PLC ±
	1 PLC ±
	2 PLC ±
	3 PLC ±
	4 PLC ±
	ANGLES ±
	FINISH 仕上
MATERIAL 材料	

DWN WENKE HE 8JUN05	Tyco Electronics Corporation Kawasaki, Japan
CHK GAVIN ZHANG 8JUN05	
APVD STEVEN YAO 8JUN05	
PRODUCT SPEC 製品規格 108-60047	NAME 名称 SOFT TRAY ASSY FH 0.6BTB CONNECTOR PLUG 10H W/G-PLATE WITH 1ROW CAP
APPLICATION SPEC 取付適用規格 114-5255	SIZE A3
WEIGHT	CAGE CODE 00779
CUSTOMER DRAWING	DRAWING NO 番号 G-6123845
	RESTRICTED TO
SCALE 尺度 1:2	SHEET 1 OF 4
	REV A

THIS DRAWING IS UNPUBLISHED. RELEASED FOR PUBLICATION APR , 1998.
 © COPYRIGHT 1998 BY TYCO ELECTRONICS CORPORATION. ALL RIGHTS RESERVED.

LOC	DIST	REVISIONS			DATE	DWN	APVD
J		P	LTR	DESCRIPTION			
			-	SEE SHEET 1	-	-	-



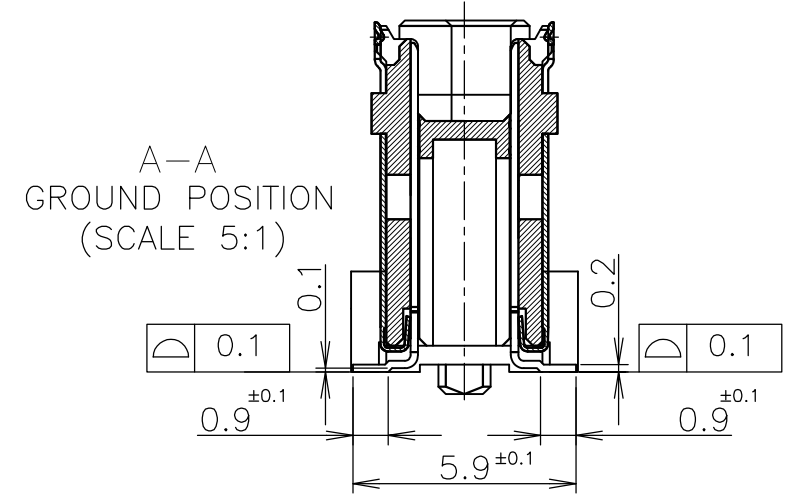
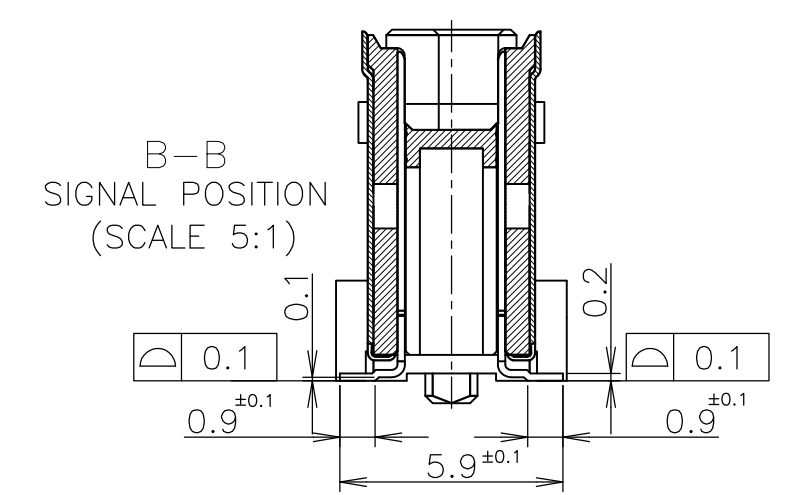
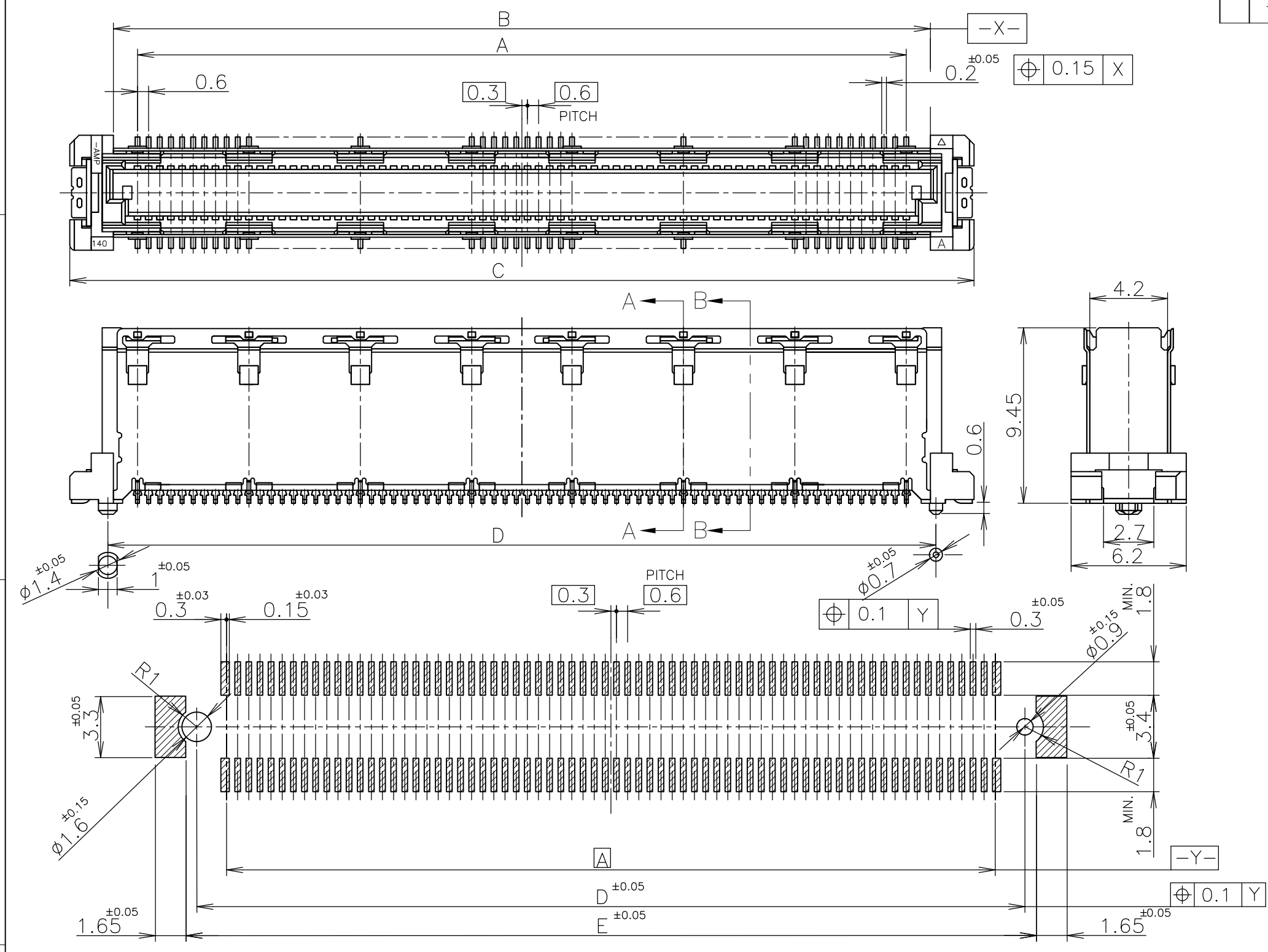
5 CONNECTORS DIMENSION AND REFERENCE P.C BOARD LAYOUT : SEE SHEET 3.

AVAILABLE	16.5	15.4	20.5	160	1123835-1	6-6123845-1
TOOLING STATUS	C	B	A	POS	CAP PART NO.	PART NO.

THIS DRAWING IS A CONTROLLED DOCUMENT.		DWN		Tyco Electronics Corporation Kawasaki, Japan	
DIMENSIONS: 単位: 耗 mm		TOLERANCES UNLESS OTHERWISE SPECIFIED: 一般公差		NAME 名称	
		0 PLC ± -		PRODUCT SPEC 製品規格	
		1 PLC ± -		APPLICATION SPEC 取付適用規格	
MATERIAL 材料		FINISH 仕上		SIZE CAGE CODE DRAWING NO RESTRICTED TO	
				A3 00779 C-6123845	
CUSTOMER DRAWING				SCALE 4:1 SHEET 2 OF 4 REV A	

THIS DRAWING IS UNPUBLISHED. RELEASED FOR PUBLICATION APR, 1998.
 © COPYRIGHT 1998 BY TYCO ELECTRONICS CORPORATION. ALL RIGHTS RESERVED.

LOC	DIST	REVISIONS					
J		P	LTR	DESCRIPTION	DATE	DWN	APVD
			-	SEE SHEET 1	-	-	-



REFERENCE P.C.BOARD LAYOUT

AVAILABLE	51.8	50.6	54.7	50	47.4	160	6-6123845-1
TOOLING STATUS	E	D	C	B	A	POS	PART NO.

GENERAL TOLERANCE 一般公差

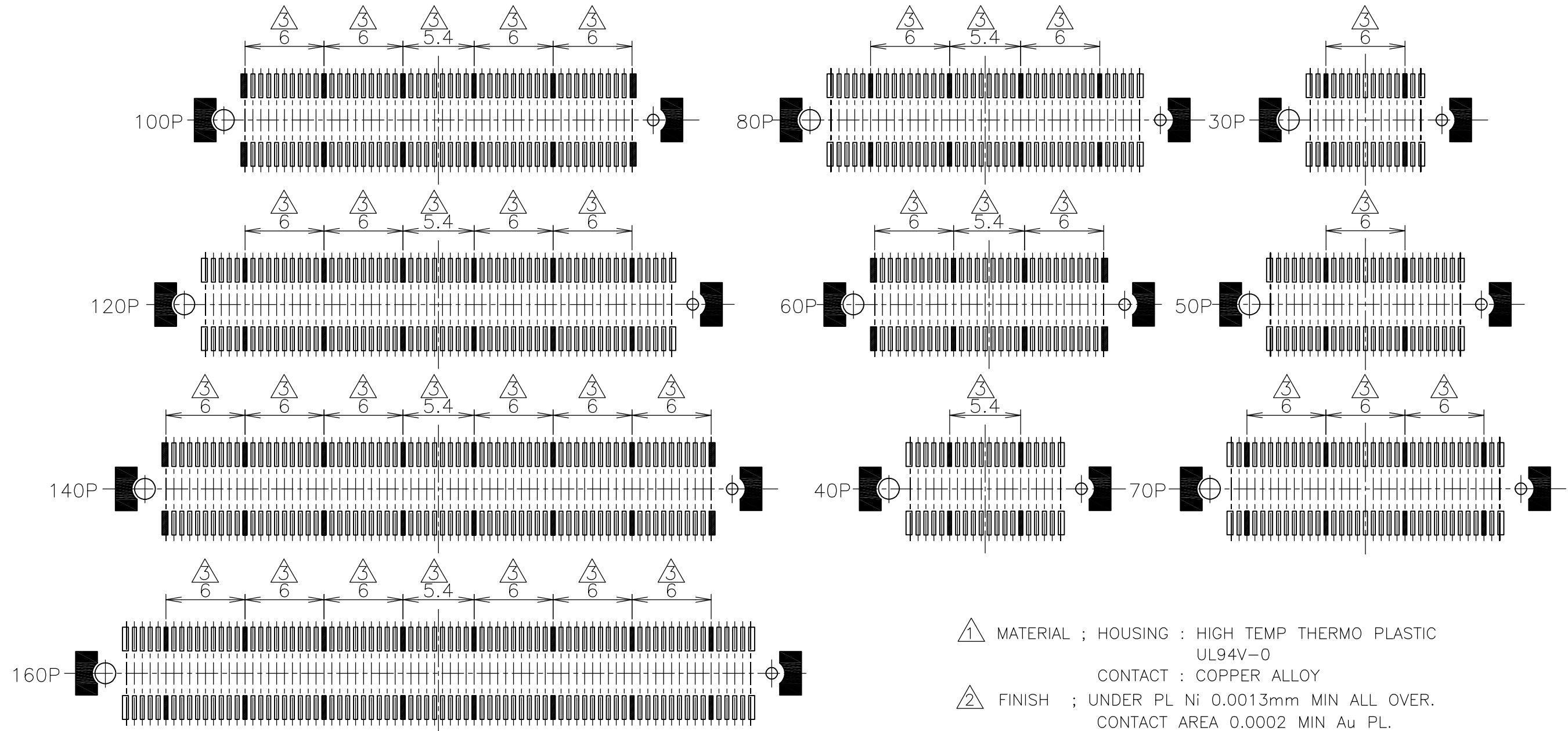
10 ≥	±0.2
30 ≥	>10: ±0.25
100 ≥	>30: ±0.3
ANGLES: ±3°	

THIS DRAWING IS A CONTROLLED DOCUMENT.

DIMENSIONS: 单位: 耗 mm	TOLERANCES UNLESS OTHERWISE SPECIFIED: 一般公差	DWN	Tyco Electronics Corporation Kawasaki, Japan
0 PLC ±-	1 PLC ±-	CHK	
2 PLC ±-	3 PLC ±-	APVD	
4 PLC ±-	ANGLES ±-	PRODUCT SPEC 製品規格	
MATERIAL 材料	FINISH 仕上	APPLICATION SPEC 取付適用規格	NAME 名称
		WEIGHT	SOFT TRAY ASSY FH 0.6BTB CONNECTOR PLUG 10H W/G-PLATE WITH 1ROW CAP
		CUSTOMER DRAWING	SIZE CAGE CODE DRAWING NO 番号 A3 00779 C-6123845
			RESTRICTED TO
			SCALE 尺度 4:1 SHEET 3 OF 4 REV A

THIS DRAWING IS UNPUBLISHED. RELEASED FOR PUBLICATION APR , 1998.
 © COPYRIGHT 1998 BY TYCO ELECTRONICS CORPORATION. ALL RIGHTS RESERVED.

LOC	DIST	REVISIONS 変更					
J		P	LTR	DESCRIPTION	DATE	DWN	APVD
			-	SEE SHEET 1	-	-	-



- ① MATERIAL ; HOUSING : HIGH TEMP THERMO PLASTIC UL94V-0
CONTACT : COPPER ALLOY
- ② FINISH ; UNDER PL Ni 0.0013mm MIN ALL OVER.
CONTACT AREA 0.0002 MIN Au PL.
SOLDERING AREA 0.001 MIN TIN PL.
- ③ THIS POSITION IS GROUND CIRCUIT.

GENERAL TOLERANCE
一般公差

10 ≥	±0.2
30 ≥	>10: ±0.25
100 ≥	>30: ±0.3
ANGLES: ±3°	

THIS DRAWING IS A CONTROLLED DOCUMENT.		DWN		Tyco Electronics		Tyco Electronics Corporation	
DIMENSIONS: 単位: 耗 mm		TOLERANCES UNLESS OTHERWISE SPECIFIED: 一般公差		CHK		Kawasaki, Japan	
		0 PLC ± -		APVD		NAME 名称	
		1 PLC ± -		PRODUCT SPEC 製品規格		SOFT TRAY ASSY	
MATERIAL 材料		2 PLC ± -		APPLICATION SPEC 取付適用規格		FH 0.6BTB CONNECTOR	
		3 PLC ± -		WEIGHT		PLUG 10H W/G-PLATE WITH 1ROW CAP	
FINISH 仕上		4 PLC ± -		SIZE		DRAWING NO	
		ANGLES ± -		A3		C-6123845	
CUSTOMER DRAWING		RESTRICTED TO		SCALE 尺度 3:1		SHEET 4 OF 4	
						REV A	