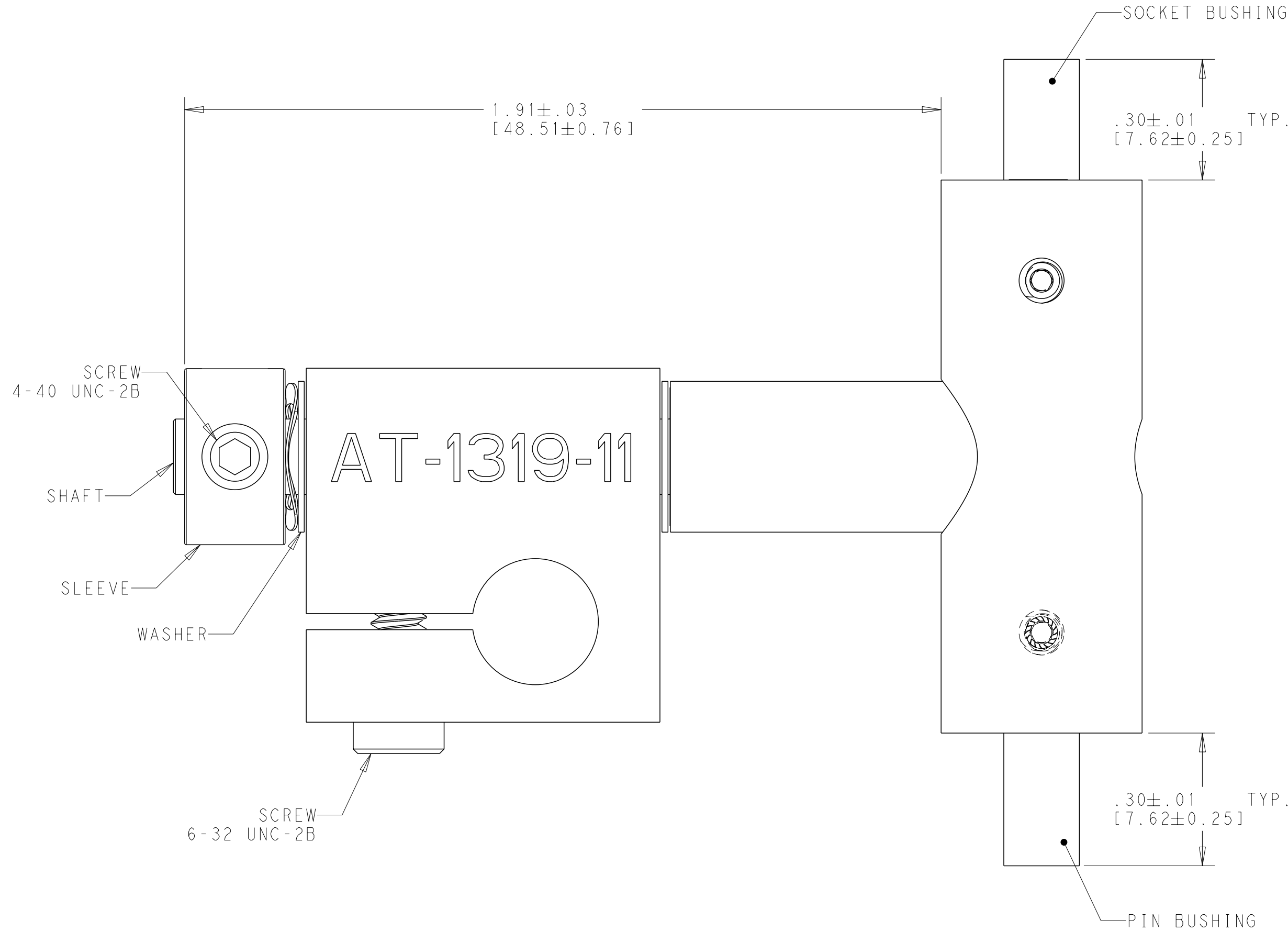
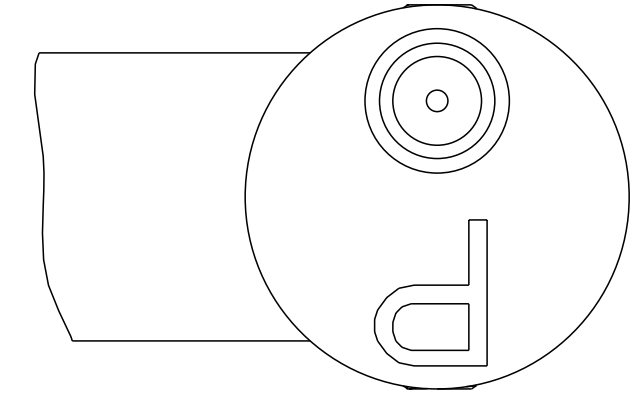
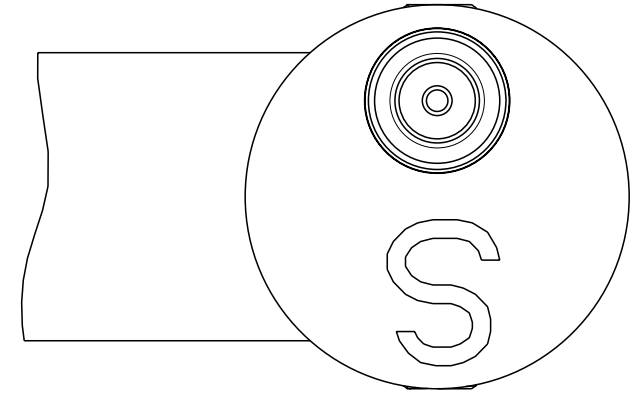


THIS DRAWING IS UNPUBLISHED. RELEASED FOR PUBLICATION
 © COPYRIGHT TE CONNECTIVITY ALL RIGHTS RESERVED.

REVISIONS					
P	LTR	DESCRIPTION	DATE	DWN	APVD
A		REVISED PER ECO-09-016603	15JUL2009	-	MH
B		REVISED PER ECO-16-001928	22FEB2016	AG	MP



NOTES:

- FOR TERMINATION INSTRUCTIONS AND APPLICATIONS SEE ENGINEERING STANDARD (ES-61161 FOR SIZE 12 CONTACTS D-602-16 (SOCKET) AND D-602-17 (PIN)).
- MATERIAL: ADAPTER HOUSING: ALUMINIUM 6061-T6 PER ASTM B221. FINISH: CLEAR ANODIZED.
 SHAFT, SLEEVE AND BUSHING HOUSING: 303 STAINLESS STEEL PER ASTM A484.
 BUSHING INNER STOP: BRASS 360 1/2 HARD PER ASTM B16/16M.
 WASHER: 18-8 STAINLESS STEEL.
 SCREW: 4-40 UNC-2B SOCKET SETSCREW, STAINLESS STEEL.
 6-32 UNC-2B SOCKET HEAD SCREW, STAINLESS STEEL.

#12 SOLDER TACT ADAPTER SUB-ASSEMBLY	993871-000
DESCRIPTION	PART NO.

THIS DRAWING IS A CONTROLLED DOCUMENT.		DWN A. GAD 22FEB2016	TE Connectivity			
DIMENSIONS: INCHES [mm]		CHK N. NAGAR 22FEB2016				
		APVD M. POPE 22FEB2016				
TOLERANCES UNLESS OTHERWISE SPECIFIED:		NAME ADAPTER ASSEMBLY PIN AND SOCKET HOLDING FIXTURE FOR SIZE 12, SOLDER TACT	SIZE A206090	CAGE CODE C-AT-1319-11	DRAWING NO.	RESTRICTED TO
0 PLC ± 1 PLC ± 2 PLC ±.01 [.25] 3 PLC ±.005 [.13] 4 PLC ± ANGLES ± FINISH ±		PRODUCT SPEC -	SCALE NTS	SHEET 1	OF 1	REV B
MATERIAL -		APPLICATION SPEC -	CUSTOMER DRAWING			