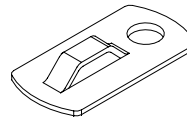
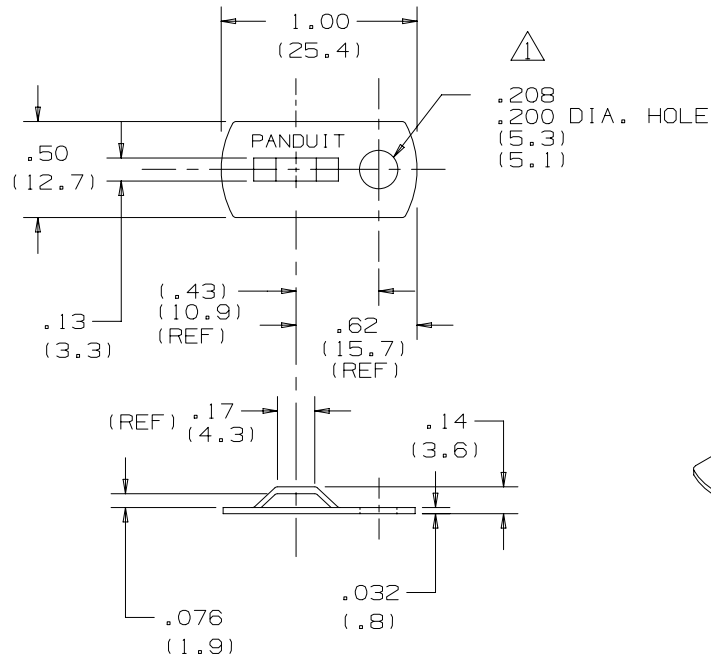


THIS COPY IS PROVIDED ON A RESTRICTED BASIS AND IS NOT TO BE USED IN ANY WAY DETRIMENTAL TO THE INTERESTS OF PANDUIT CORP.

PANDUIT PART NUMBER*	WEIGHT lbs/100 pcs (g)/100 pcs	USE WITH ANY OF THESE CABLE TIE CROSS-SECTIONS	MAX. SCREW SIZE
△ MBMS-S10 (SEE NOTE 4)	.123 (55.8)	MINIATURE INTERMEDIATE STANDARD	#10 (M5)



NOTES:

1. SEE CURRENT PRICE SHEET FOR PART NUMBER SUFFIX DESIGNATION FOR PACKAGE SIZE.
2. MATERIAL: ALUMINUM ALLOY - 3003-H14 (HALF HARD, TEMPER).
3. FINISH: RoHS COMPLIANT TCP COATING  
CORROSION RESISTANCE: 168 HRS SALT SPRAY PER ASTM-B-117
- △ 4. MBMS-S10-CY = 100 PC PACKAGE  
MBMS-S10-MY = 1000 PC PACKAGE

DIMENSIONS IN BRACKETS ARE METRIC [ mm ]

CAD FILENAME/LAYERS



MBMS-S10  
METAL MOUNT

UNLESS OTHERWISE SPECIFIED,  
DIMENSIONAL TOLERANCES ARE:  
(.X) ±0.05 (1.3) (.XXX) ±0.010 (0.25)  
(.XX) ±0.02 (0.5) ANGLES ± 5°

UNLESS OTHERWISE SPECIFIED,  
ALL DIMENSIONS ARE GIVEN  
IN INCHES, THIRD ANGLE PROJECTION.

REV	DATE	BY	CHK	DESCRIPTION	ECN	R	CUST	SUP
O1	10/15/19	BMAG	JHAC	UPDATED PART # & SCREW SIZE TO .20-.208 AND ADDED NOTE 4.	GAECN05506			
R	7/27/06	JAD		INITIAL RELEASE	GB0239LW	R		

DRAWN BY JAD	MAT'L:	SCALE NONE
DATE 7/27/06	SEE NOTE 2,3	DRAWING NO. GB0239LW
CHK'D		DWG A SIZE