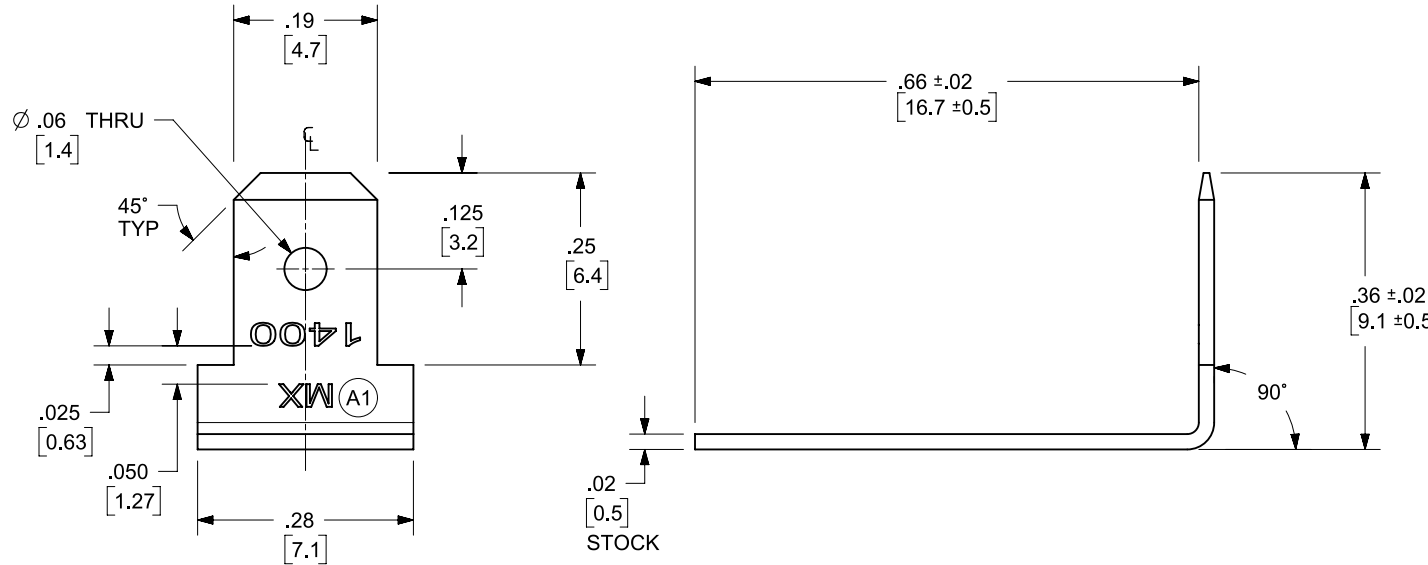
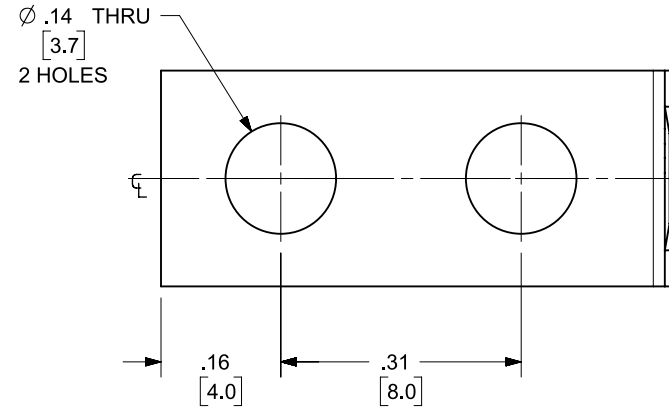


MATERIAL NO.	ENGINEERING NO	DESCRIPTION	MATERIAL	FINISH
380020183	1415	TERMINAL, FAST-TAB VR	BRASS	TIN OVER COPPER PLATED

NOTES:  
 1. ALL DIM'S SHOWN ARE BEFORE PLATING.  
 2. PART IS RoHS COMPLIANT.



FUNCTIONAL SYMBOLS	THIS DRAWING CONTAINS INFORMATION THAT IS PROPRIETARY TO MOLEX ELECTRONIC TECHNOLOGIES, LLC AND SHOULD NOT BE USED WITHOUT WRITTEN PERMISSION		
	DIMENSION UNITS	SCALE	CURRENT REV DESC: "MX" WAS "BEAU"
$\frac{E}{A} = 0$	in/[mm]	4:1	<p><b>molex</b></p> <p>TERMINAL, FAST-TAB VR</p> <p>PRODUCT CUSTOMER DRAWING</p>
$\frac{E}{F} = 0$	GENERAL TOLERANCES (UNLESS SPECIFIED)		
$\frac{E}{P} = 0$	MM	INCH	
DIVISIONAL SYMBOLS	4 PLACES ±	±	
	3 PLACES ±	± 0.005	
	2 PLACES ±	0.13 ± 0.01	
	1 PLACE ±	0.3 ±	
	0 PLACES ±	±	
	ANGULAR TOL	± 2.0 °	
	DRAFT WHERE APPLICABLE MUST REMAIN WITHIN DIMENSIONS	THIRD ANGLE PROJECTION	<p>EC NO: 650468</p> <p>DRWN: RMV02 2020/11/13</p> <p>CHK'D: DMYRICK 2020/12/04</p> <p>APPR: EJOHNSON04 2020/12/18</p> <p>INITIAL REVISION:</p> <p>DRWN: DRWN BY XXXX/XX/XX</p> <p>APPR: APPR BY XXXX/XX/XX</p>
DOCUMENT STATUS	P1	RELEASE DATE	2020/12/18 14:47:47
DOCUMENT NUMBER	SD-38002-0183	DOC TYPE	PSD
MATERIAL NUMBER	SEE TABLE	DOC PART	001
CUSTOMER	GENERAL MARKET	REVISION	A1
SHEET NUMBER	1 OF 1		