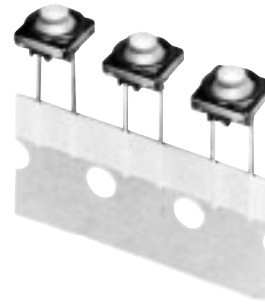


## 8 mm Square Long Travel 2R Light Touch Switches

Type: **EVQQJ**



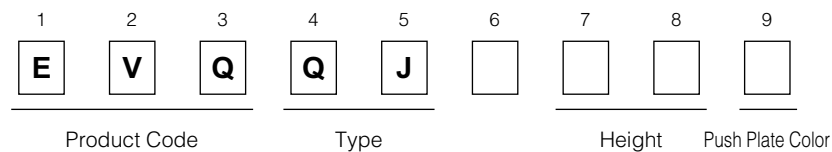
### ■ Features

- External dimensions : 8.0 mm×8.0 mm, Height 5.0 mm, 5.5 mm, 6.1 mm (Including the push plate)
- Long life (self-cleaning)
- Low contact resistance with metal contacts
- Small bouncing

### ■ Recommended Applications

- Operating Switches for car air conditioners, car audio systems, etc.
- Push switches for camcorders
- Ten-key switches for telephones

### ■ Explanation of Part Numbers



### ■ Specifications

|                               |                                 |  |                    |                    |                    |
|-------------------------------|---------------------------------|--|--------------------|--------------------|--------------------|
| Type                          |                                 | Snap action/Push-on 1-pole 1-throw SPST              |                    |                    |                    |
| Electrical                    | Rating                          | 10 $\mu$ A 2 Vdc to 5 mA 12 Vdc. (Resistive load)    |                    |                    |                    |
|                               | Contact Resistance              | 200 m $\Omega$ max.                                  |                    |                    |                    |
|                               | Insulation Resistance           | 50 M $\Omega$ min. (at 100 Vdc)                      |                    |                    |                    |
|                               | Dielectric Withstanding Voltage | 250 Vac for 1 minute                                 |                    |                    |                    |
|                               | Bouncing                        | 10 ms max. (ON, OFF)                                 |                    |                    |                    |
| Mechanical                    | Operating Force                 | 0.8 N $\pm$ 0.4 N                                    | 1.3 N $\pm$ 0.6 N  | 2.5 N $\pm$ 0.6 N  | 3.0 N $\pm$ 0.6 N  |
|                               | Travel                          | 1.0 mm   | 1.0 mm             | 1.2 mm             | 1.75 mm            |
| Endurance                     | Operating Life                  | 1000000 cycles min.                                  | 100000 cycles min. | 100000 cycles min. | 100000 cycles min. |
| Operating Temperature         |                                 | -20 °C to +70 °C                                     |                    |                    |                    |
| Storage Temperature           |                                 | -40 °C to +85 °C (Bulk)<br>-20 °C to +40 °C (Taping) |                    |                    |                    |
| Minimum Quantity/Packing Unit |                                 | 1000 pcs. Radial Taping (Reel Pack)                  |                    |                    |                    |
| Quantity/Carton               |                                 | 10000 pcs.   |                    |                    |                    |

### ■ Application Notes:

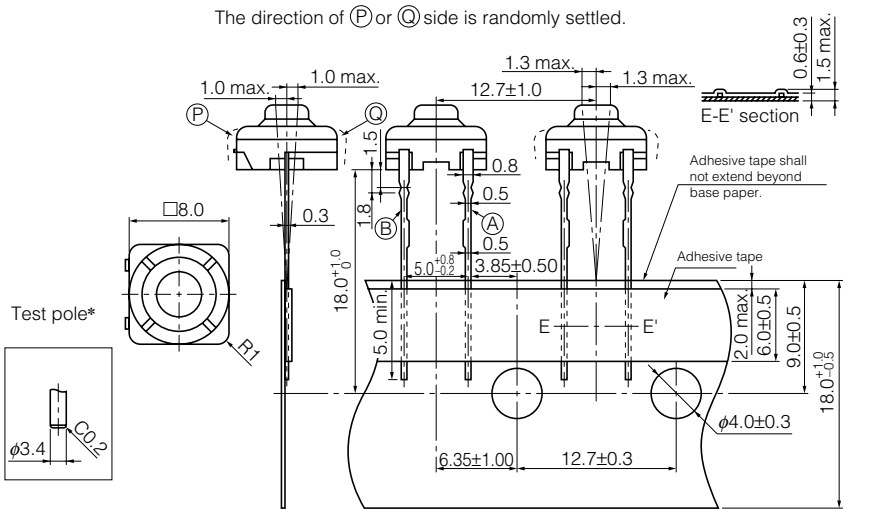
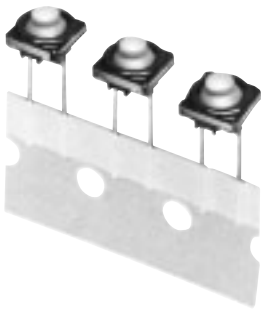
- Washing is not allowed.
- Inclination of pushing knob shall be 3 ° max.

Design and specifications are each subject to change without notice. Ask factory for the current technical specifications before purchase and/or use. Should a safety concern arise regarding this product, please be sure to contact us immediately.

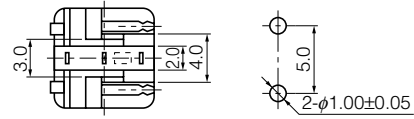
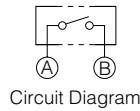
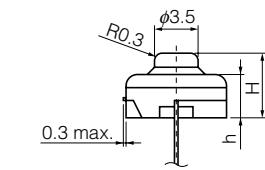
■ Dimensions in mm (not to scale)

EVQQJ

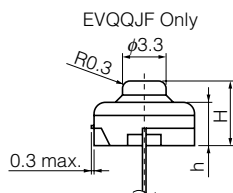
(Radial Taping)



JIS C0806-2 shall be applied to the items not specified here.



PWB mounting hole for reference  
 (Pitch tolerance:  $\pm 0.1$ )  
 View from mounting side



| Part Numbers | Operating Force | Travel  | H=Height | h=Mounting Base | Push Plate Color | Operating Life |
|--------------|-----------------|---------|----------|-----------------|------------------|----------------|
| EVQQJJ05Q    | 0.8 N           | 1.0 mm  | 5.0 mm   | 3.5 mm max.     | Grey             | 1000000 cycles |
| EVQQJE05D    | 1.3 N           | 1.0 mm  | 5.0 mm   | 3.6 mm max.     | Orange           | 100000 cycles  |
| EVQQJD05B    | 2.5 N           | 1.2 mm  | 5.5 mm   | 3.8 mm max.     | Blue             | 100000 cycles  |
| EVQQJF06Q    | 3.0 N           | 1.75 mm | 6.1 mm   | 4.0 mm max.     | Grey             | 100000 cycles  |

Design and specifications are each subject to change without notice. Ask factory for the current technical specifications before purchase and/or use. Should a safety concern arise regarding this product, please be sure to contact us immediately.