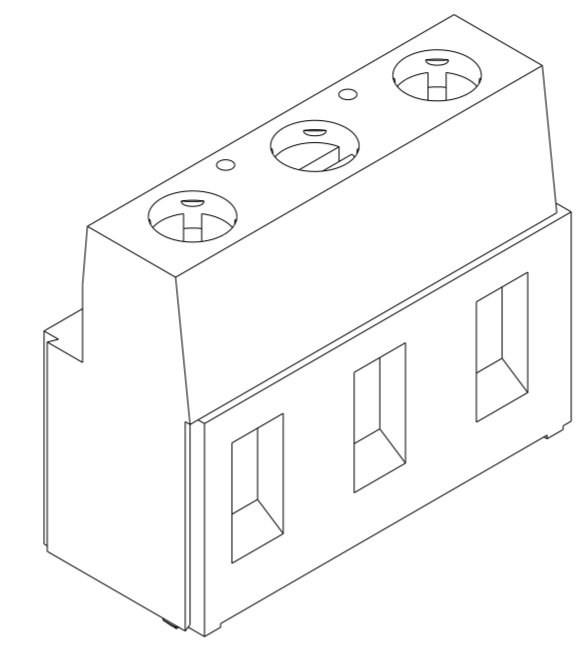
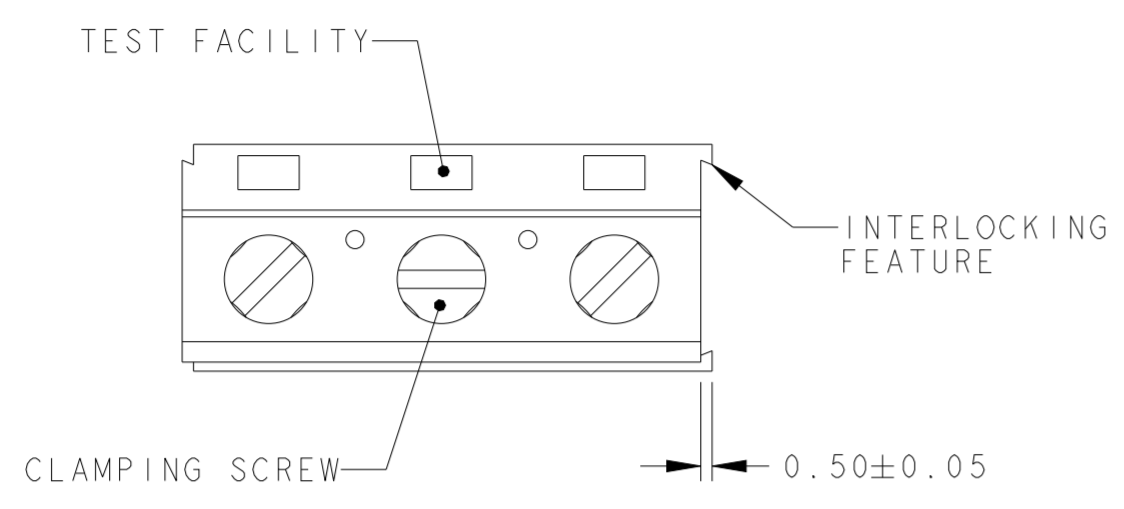


REVISIONS					
P	LTR	DESCRIPTION	DATE	DWN	APVD
D3		PN 282861-4 IS REACTIVATED	17JUL2018	RK	PS
D4		PN 282861-5 OBSOLETE	18OCT2021	SCB	SS

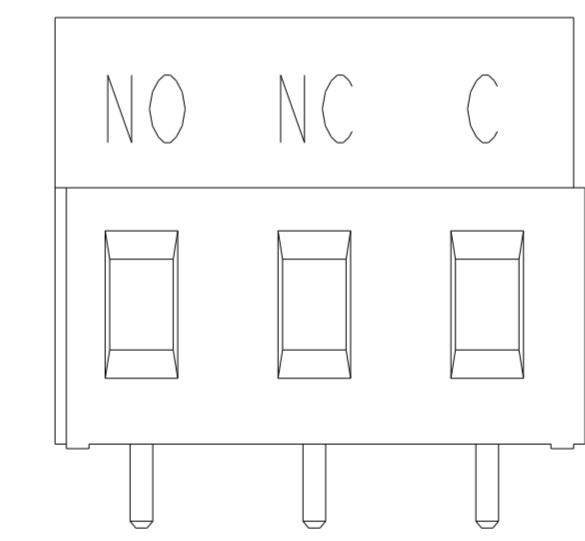
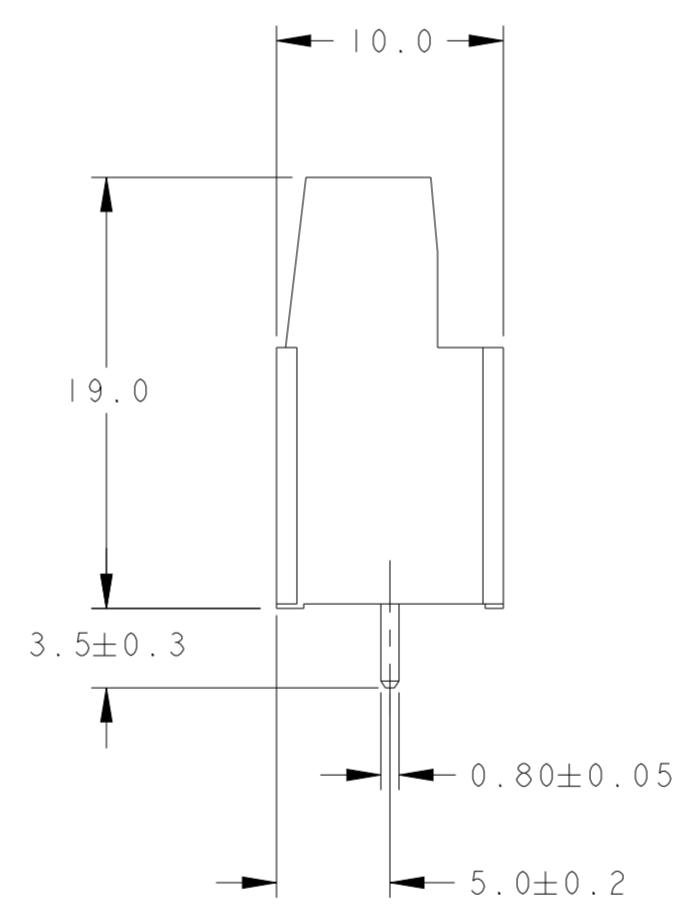
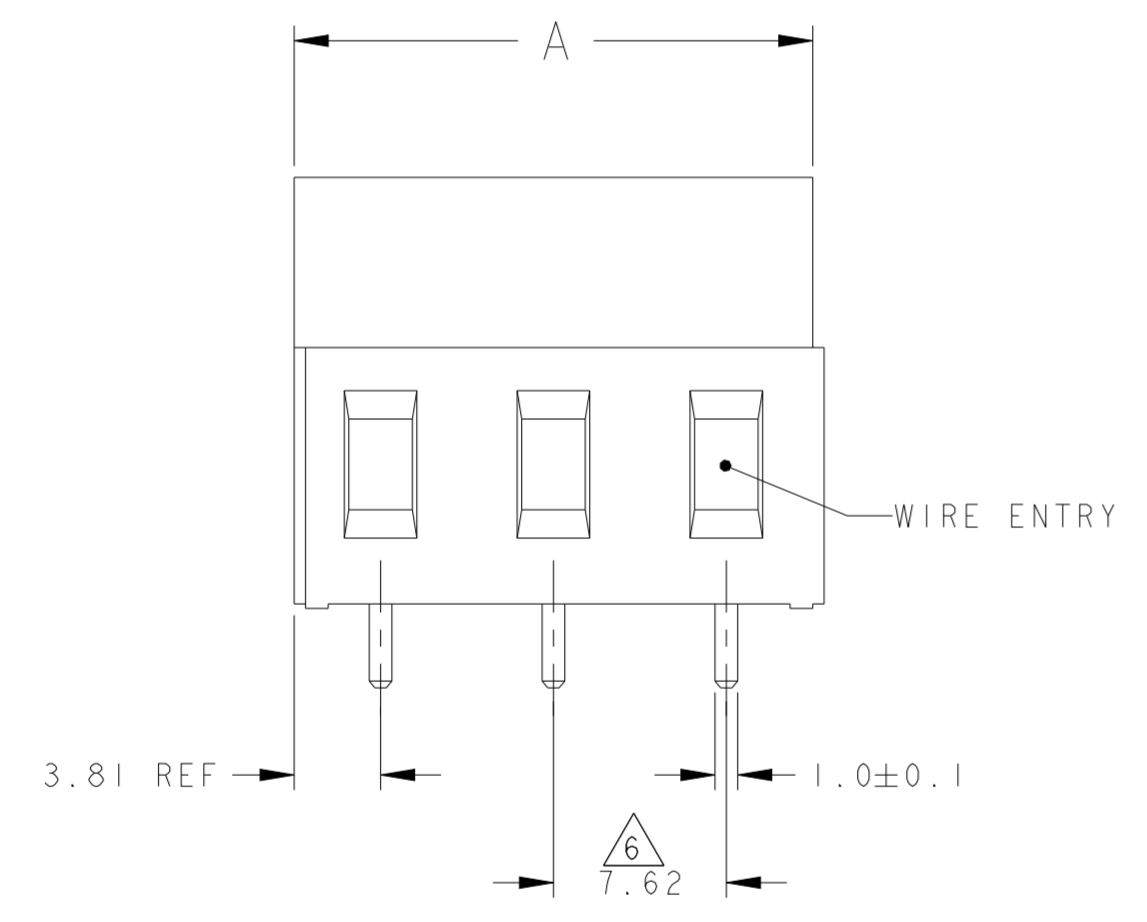


282861-3 AS SHOWN

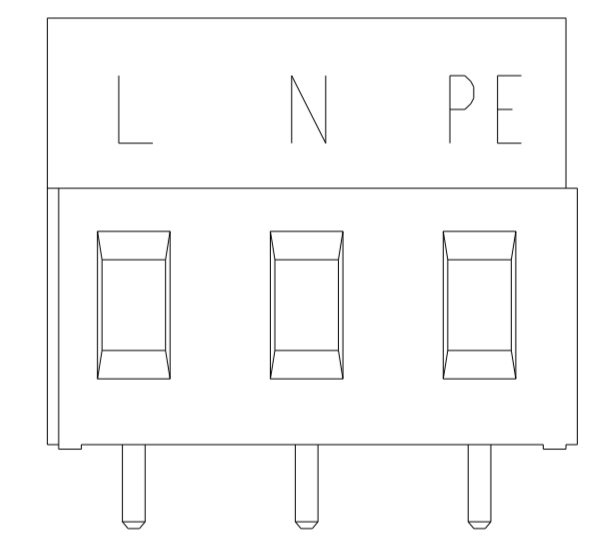
NOTES:

- MATERIALS AND FINISH
HOUSING: PA 6-6, UL 94-V0, COLOR: SEE TABLE.
CLAMP: BRASS, NICKEL PLATED.
TERMINAL: BRASS, TIN PLATED.
CLAMPING SCREW: M3, BRASS, NICKEL PLATED.
- MECHANICAL
MIN. PC BOARD HOLES DIAMETER : 1.4 mm
MAX. PC BOARD THICKNESS : 2.4 mm
WIRE STRIPPING LENGTH : 6.5 - 7.0 mm
RECOMMENDED TIGHTENING TORQUE FOR SCREW : 0.5 Nm.
- ELECTRICAL
WIRE RANGE : 12-30 AWG
MAX. VOLTAGE : 300 V
MAX. CURRENT : 24 A
CONTACT RESISTANCE : <15 m Ohm
INSULATION RESISTANCE : >1000 M Ohm (500V DC)
- END-TO-END STACKABLE W/INTERLOCK WITHOUT LOSS OF CENTERLINE SPACING.
- RECOGNIZED UNDER THE COMPONENT PROGRAM OF UNDERWRITERS LABORATORIES INC. FILE NO E60677.

- 6 NOT CUMULATIVE TOLERANCE.
- 7 INK MARKING, BLACK COLOR.

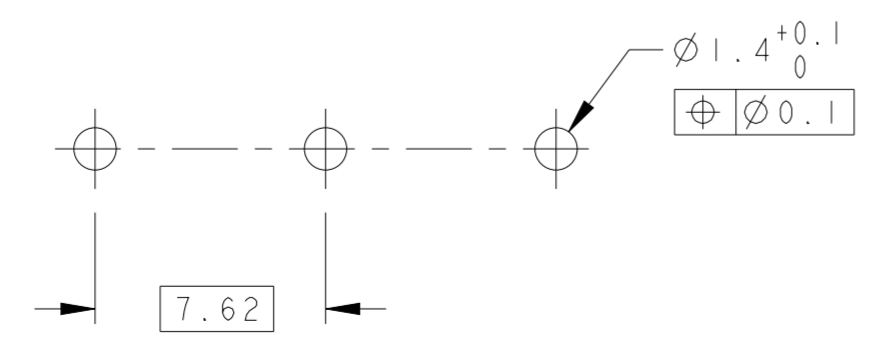


DETAIL L 7



DETAIL M 7

OBSOLETE	GREEN	SEE DETAIL M	22.86	3	282861-5
	GRAY	SEE DETAIL L	22.86	3	282861-4
	GREEN	-	22.86	3	282861-3
	GREEN	-	15.24	2	282861-2
	HOUSING COLOR	MARKING	A	NO OF POSN	PART NUMBER



RECOMMENDED PC BOARD LAYOUT

THIS DRAWING IS A CONTROLLED DOCUMENT.

DWN	E. ZANOLINI	24OCT2001
CHK	D. BIEVENOUR	24OCT2001
APVD	D. BIEVENOUR	24OCT2001

STE TE Connectivity

NAME: TERMINAL BLOCK, PCB MOUNT
SIDE ENTRY WIRE, STACKING
W/ INTERLOCK, 7.62mm PITCH

PRODUCT SPEC	108-20166	SIZE	CAGE CODE	DRAWING NO	RESTRICTED TO
APPLICATION SPEC	114-20079	A2	0779	C-282861	-
MATERIAL	SEE NOTES	WEIGHT	-	CUSTOMER DRAWING	SCALE 3:1 SHEET 1 OF 1 REV D4