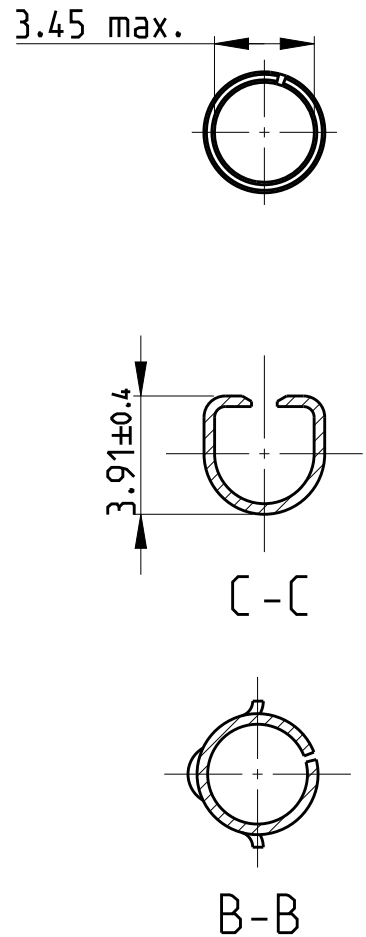
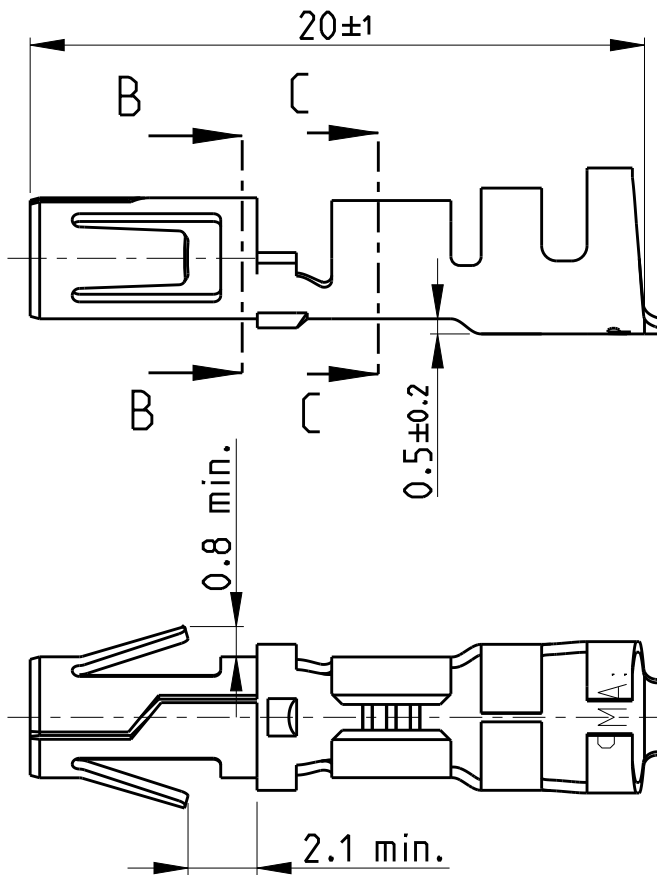


REVISIONS

| P | LTR | DESCRIPTION | DATE | DWN | APVD |
|----|-----|---------------------------|-----------|-----|------|
| N2 | | REVISED PER ECR-17-006577 | 15MAY2017 | JB | DZ |
| N3 | | REVISED PER ECR-20-005051 | 27OCT2020 | SS | VS |



NOTE:

1 OBSOLETE PARTS: OBSOLETE CIS STREAMLINING PER D.RENAUD/D.SINISI

| | | | | | |
|------------|------------------------|------------------------|----------|---------|----------|
| OBSELETE | 2.1-5.3mm ² | max. 4.5mm | Bronze | None | 925663-5 |
| OBSELETE | 2.1-5.3mm ² | max. 4.5mm | Bronze | Plain | 925663-4 |
| 1 OBSELETE | 2.1-5.3mm ² | max. 4.5mm | Bronze | Silver | 925663-3 |
| OBSELETE | 2.1-5.3mm ² | max. 4.5mm | Bronze | Pre-tin | 925663-2 |
| | 2.1-5.3mm ² | max. 4.5mm | Brass | Pre-tin | 925663-1 |
| | DGB | Insulation \emptyset | Material | Finish | Part no. |

2008
 RELEASED FOR PUBLICATION
 ALL RIGHTS RESERVED.
 THIS DRAWING IS UNPUBLISHED.
 COPYRIGHT 2008
 BY -

| | | | | | |
|--|-----------------------------------|------------------|-----------|------------|-------------------------|
| DIMENSIONS: mm | DWN J. Salo 26NOV2008 | MATERIAL | FINISH | | |
| | CHK R. Sole 26NOV2008 | TE Connectivity | | | |
| TOLERANCES UNLESS OTHERWISE SPECIFIED: | APVD P.E.Grassano 26NOV2008 | | | | NAME .140 DIA SOCKET |
| | PRODUCT SPEC | SIZE | CAGE CODE | DRAWING NO | RESTRICTED TO |
| 0 PLC ± 1 P/C ± 2 PLC ±0.4 3 P/C ± 4 PLE ± ANGLES ±1° 30' | APPLICATION SPEC | A 4 | - | C-925663 | |
| | WEIGHT | CUSTOMER DRAWING | | SCALE | SHEET |
| | | | | 4:1 | 1 OF 1 |
| | | | | REV | N3 |