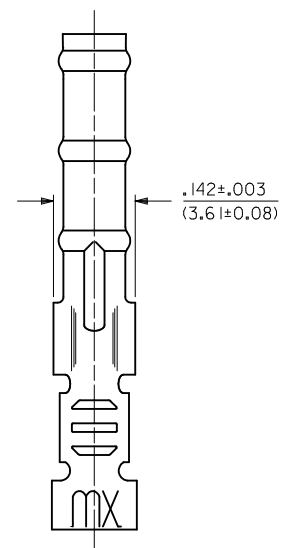
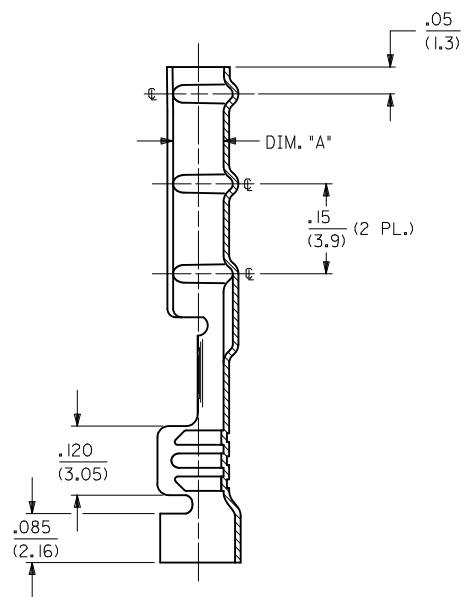
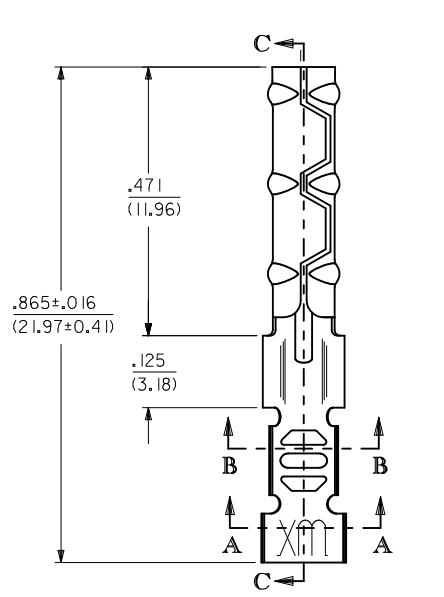
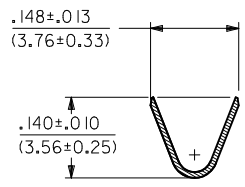


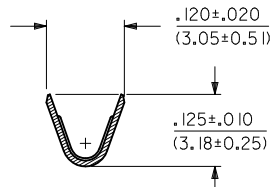
1881-2\*\*\* TERMINAL SHOWN (16-24 AWG)  
SEE SHEET 2 FOR 1881-3\*\*\* TERMINAL



**SECTION C-C**



**SECTION A-A**



**SECTION B-B**

UPDATE	2011/04/11	QUALITY	GENERAL TOLERANCES	DIMENSION STYLE	SCALE	DESIGN UNITS	THIRD ANGLE
REV. LEVELS	2011/04/11	SYMBOLS	(UNLESS SPECIFIED)	IN/MM	6:1	INCH	PROJECTION
EC NO: UCP2011-3131	2011/04/11	▽=0					
DRWN: AELHAG	2011/04/11	▽=0					
CHKD: JBELL	2011/04/11						
APPR: FSMITH	2011/05/23						
DESCRIPTION							

4 PLACES	± ---	± ---
3 PLACES	± ---	± .010
2 PLACES	± 0.25	± .014
1 PLACE	± 0.36	± ---
ANGULAR ±1/2°		
DRAFT WHERE APPLICABLE MUST REMAIN WITHIN DIMENSIONS		

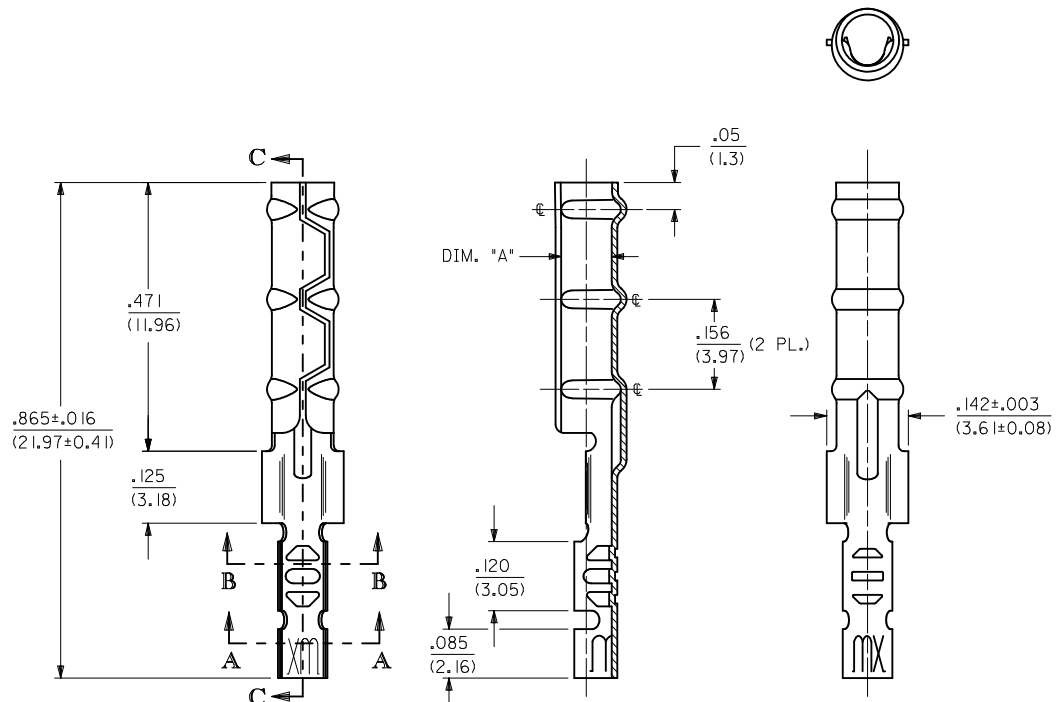
DRAWN BY	DATE
AELHAG	2011/04/11
CHECKED BY	DATE
JBELL	2011/04/11
APPROVED BY	DATE
MATERIAL NO.	DOCUMENT NO.
SEE CHART	SD-1881-*
SIZE	
C	

TITLE		SHEET NO.	
CRIMP TERMINAL SOCKET, CLASPCON		1 OF 2	
MOLEX INCORPORATED			
THIS DRAWING CONTAINS INFORMATION THAT IS PROPRIETARY TO MOLEX INCORPORATED AND SHOULD NOT BE USED WITHOUT WRITTEN PERMISSION			

2	L2
1	L2
SHT/REV	

CHART				
PART NUMBER	ENG. NUMBER	DIMENSION "A" (DIA.)	INTERLEAF PAPER OPTION	
02-08-1102	1881-2L IA	.085/.090 (2.16/2.29)	YES	
02-08-1101	1881-2C IA			
02-08-5101	1881-2C1A-I			
02-08-1106	1881-2L IB	.083/.088 (2.11/2.24)		OBSOLETE
02-08-1105	1881-2C IB			OBSOLETE
02-08-1104	1881-3L IA	.085/.090 (2.16/2.29)		
02-08-1103	1881-3C IA			
02-08-1107	1881-4C IA	.085/.090 (2.16/2.29)		OBSOLETE
02-08-1108	1881-4L IA			OBSOLETE

1881-3\*\*\* TERMINAL SHOWN (24-30 AWG)  
SEE SHEET 1 FOR 1881-2\*\*\* TERMINAL



**LEGEND**

1881-\*\*\*-\*

**CRIMP STYLE**  
2 = 16-24 AWG  
3 = 24-30 AWG  
4 = 22 AWG

**INTERLEAF PAPER OPTION**  
BLANK : INTERLEAF PAPER ON FIRST FEW WRAPS ONLY.  
I : INTERLEAF PAPER THROUGH OUT REEL.

**FORM**  
L = LOOSE  
C = CHAIN

**BARREL I.D.**  
A = .085/.090 BARREL I.D.

**FINISH**  
(\*P\* PRECEEDING FINISH NO. DESIGNATES PREPLATED MATERIAL)  
1 = P901 - HOT TIN DIP: .000020/(0.0005) MIN.

- NOTES:
1. MATERIAL: CARTRIDGE BRASS
  2. FINISH: SEE LEGEND
  3. PRODUCT SPECIFICATION: N/A
  4. PACKAGING SPECIFICATION: N/A
  5. 1881 "CLASPCON" SERIES TERMINAL WITH THE STANDARD BARREL I.D. IS INTENDED FOR MATING TO .093/(2.36) DIA. P.C. BOARD PINS.
  6. INITIAL EXTRACTION FORCE TO BE 4.0±1.5 LBS. FROM AN .093/.092 / (2.36/2.34) DIA. PIN AND 2 LBS. MIN. AFTER THE 10TH EXTRACTION ON STANDARD BARREL I.D.

ADD P/N 02-08-5101 EC NO: UCP2011-3131 DRWN: AELHAG 2011/04/11 CHKD: JBELL 2011/04/11 APPR: FSMITH 2011/05/23	QUALITY SYMBOLS	GENERAL TOLERANCES (UNLESS SPECIFIED)	DIMENSION STYLE	SCALE	DESIGN UNITS	THIRD ANGLE PROJECTION															
	$\nabla=0$ $\nabla=0$	<table border="1"> <tr> <th></th> <th>mm</th> <th>INCH</th> </tr> <tr> <td>4 PLACES</td> <td>± ---</td> <td>± ---</td> </tr> <tr> <td>3 PLACES</td> <td>± ---</td> <td>± .010</td> </tr> <tr> <td>2 PLACES</td> <td>± 0.25</td> <td>± .014</td> </tr> <tr> <td>1 PLACE</td> <td>± 0.36</td> <td>± ---</td> </tr> </table>		mm	INCH	4 PLACES	± ---	± ---	3 PLACES	± ---	± .010	2 PLACES	± 0.25	± .014	1 PLACE	± 0.36	± ---	IN/MM DRAWN BY: AELHAG DATE: 2011/04/11 CHECKED BY: JBELL DATE: 2011/04/11 APPROVED BY: _____ DATE: _____	6:1	INCH	
		mm	INCH																		
	4 PLACES	± ---	± ---																		
3 PLACES	± ---	± .010																			
2 PLACES	± 0.25	± .014																			
1 PLACE	± 0.36	± ---																			
DRAFT WHERE APPLICABLE MUST REMAIN WITHIN DIMENSIONS	MATERIAL NO. <b>SEE CHART</b>	DOCUMENT NO. <b>SD-1881-*</b>	SHEET NO. <b>2 OF 2</b>																		
L2	THIS DRAWING CONTAINS INFORMATION THAT IS PROPRIETARY TO MOLEX INCORPORATED AND SHOULD NOT BE USED WITHOUT WRITTEN PERMISSION	<b>MOLEX INCORPORATED</b> CRIMP TERMINAL SOCKET, CLASPCON																			