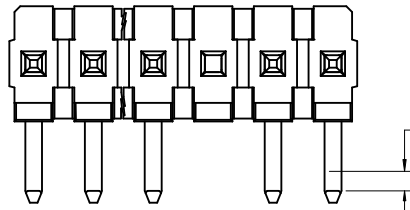
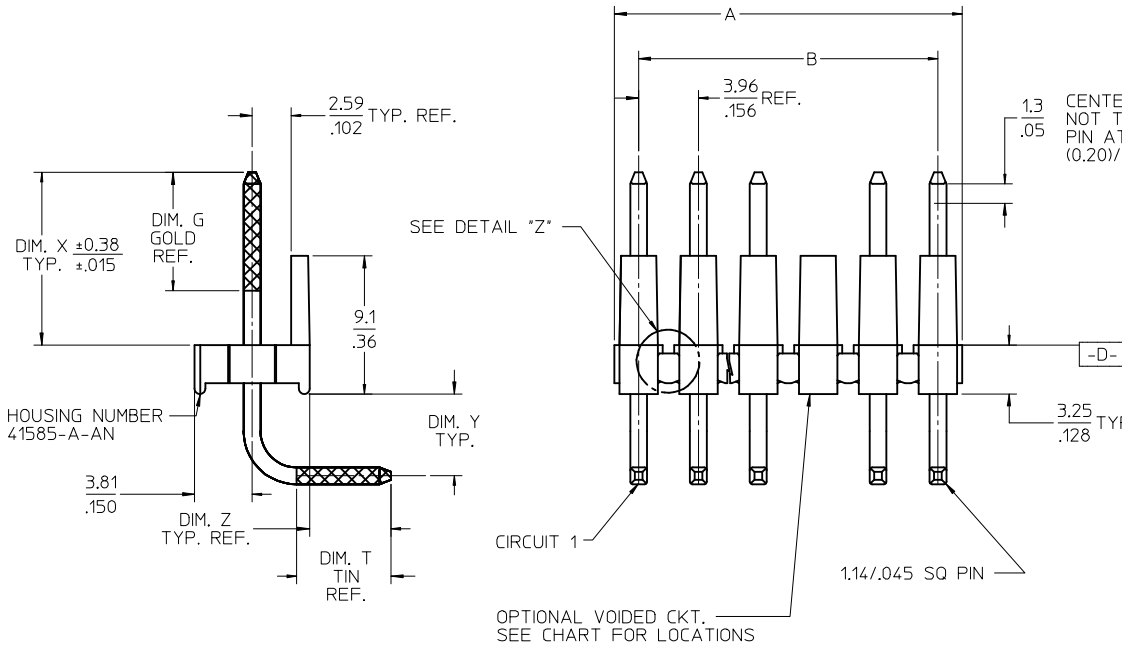


DETAIL "Z"  
SCALE 10:1



1.3  
.05 CENTERLINE OF PIN IN AREA SHOWN NOT TO VARY FROM CENTERLINE OF PIN AT DATUM -D- BY MORE THAN (0.20)/.008 IN ANY DIRECTION.



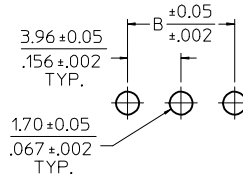
1.3  
.05 CENTERLINE OF PIN IN AREA SHOWN NOT TO VARY FROM CENTERLINE OF PIN AT DATUM -D- BY MORE THAN (0.20)/.008 IN ANY DIRECTION.

OPTIONAL VOIDED CKT.  
SEE CHART FOR LOCATIONS

- NOTES:
1. MATERIAL: GLASS FILLED POLYESTER, 94V-0, MOLDED BLACK
  2. FINISH: (197) OVERALL REFLOWED MATTE TIN: 0.00152/.000060 MIN. OVER 0.00127/.000050 MIN. NICKEL OVERALL.  
(208) SELECT GOLD: 0.00038/.000015 MIN.  
SELECT TIN: 0.00254/.000100 MIN  
OVERALL NICKEL UNDERPLATE: 0.00127/.000050 MIN.  
(228) SELECT GOLD: 0.00076/.000030 MIN.  
SELECT TIN: 0.00254/.000100 MIN.  
OVERALL NICKEL UNDERPLATE: 0.00127/.000050 MIN.  
(241) SELECT GOLD: 0.00051/.000020 MIN.  
SELECT TIN: 0.00254/.000100 MIN.  
OVERALL NICKEL UNDERPLATE: 0.00127/.000050 MIN.
  3. PRODUCT SPECIFICATION: PS-08-50
  4. PACKAGING SPECIFICATION: SEE CHARTS
  5. PIN PUSH OUT FORCE: PRIOR TO SOLDERING, A 3 LB MINIMUM FORCE (IN EITHER DIRECTION) SHALL BE REQUIRED TO PUSH THE PIN OUT OF THE HEADER. (PARTS ARE STACKABLE END TO END ON (3.96)/.156 CENTERS. (SPACING TABS MUST BE REMOVED ON CIRCUIT SIZES 1 THROUGH 23 BEFORE PARTS ARE STACKABLE.)
  6. SOLDERABILITY: WHEN PARTS ARE SOLDERED AT A TEMPERATURE OF (230°C) OR 446°F FOR 5 SECONDS, EACH SOLDERED SURFACE SHALL BE A MINIMUM OF 95% COVERED WITH A SMOOTH CONTINUOUS ADHERENT COATING. FOR OTHER INFORMATION SEE SMES-152.
  8. THIS PART CONFORMS TO CLASS B REQUIREMENTS OF COSMETIC SPECIFICATION PS-45499-002.

A-41681- \* N \* \* \* \*  
PACKAGING AND OPTIONS  
NO OF CKTS  
PIN DIMENSIONS  
PLATING

VOID LOCATIONS  
BLANK=NO VOIDS  
NO.=CKT NO, VOIDED  
MULT-VOIDS=51 UP



PCB LAYOUT: COMPONENT SIDE  
RECOMMENDED PCB THICKNESS:  
(1.57±0.18)/.062±.007

2-*	AG
1	AG1
SHT.	REV

CIRCUIT	A	B
2	6.78/7.87	3.96
	.267/.310	.156
3	10.74/11.84	7.92
	.423/.466	.312
4	14.71/15.80	11.89
	.579/.622	.468
5	18.67/19.76	15.85
	.735/.778	.624
6	22.63/23.72	19.81
	.891/.934	.780
7	26.59/27.69	23.77
	1.047/1.090	.936
8	30.56/31.65	27.74
	1.203/1.246	1.092
9	34.52/35.61	31.70
	1.359/1.402	1.248
10	38.48/39.57	35.66
	1.515/1.558	1.404
11	42.44/43.54	39.62
	1.671/1.714	1.560
12	46.41/47.50	43.59
	1.827/1.870	1.716
13	50.37/51.46	47.55
	1.983/2.026	1.872
14	54.33/55.42	51.51
	2.139/2.182	2.028
15	58.29/59.39	55.47
	2.295/2.338	2.184
16	62.26/63.35	59.44
	2.451/2.494	2.340
17	66.22/67.31	63.40
	2.607/2.650	2.496
18	70.18/71.27	67.36
	2.763/2.806	2.652
19	74.14/75.23	71.32
	2.919/2.962	2.808
20	78.11/79.20	75.29
	3.075/3.118	2.964
21	82.07/83.16	79.25
	3.231/3.274	3.120
22	86.03/87.12	83.21
	3.387/3.430	3.276
23	89.94/91.08	87.17
	3.541/3.586	3.432
24	93.85/95.00	91.14
	3.695/3.740	3.588

PC TAIL TOLERANCE EC NO: UCP2014-3093 IDRWINK/PPER 2014/01/28 CHKD: BANDERSON 2014/01/28 APPR: FSM/TH 2014/02/10	QUALITY SYMBOLS ▽=0 ▽=0 ▽=0	GENERAL TOLERANCES (UNLESS SPECIFIED)		DIMENSION STYLE MM/IN		SCALE 4:1	DESIGN UNITS INCH	THIRD ANGLE PROJECTION
		4 PLACES ± --- ± ---	3 PLACES ± --- ± .010	2 PLACES ± 0.25 ± ---	1 PLACE ± --- ± ---	0 PLACE ± ±	ANGULAR ±1/2°	DRAFT WHERE APPLICABLE MUST REMAIN WITHIN DIMENSIONS
AG1	REV	MATERIAL NO. SEE CHART		DOCUMENT NO. SD-41682-001		SHEET NO. 1 OF *		
THIS DRAWING CONTAINS INFORMATION THAT IS PROPRIETARY TO MOLEX INCORPORATED AND SHOULD NOT BE USED WITHOUT WRITTEN PERMISSION								