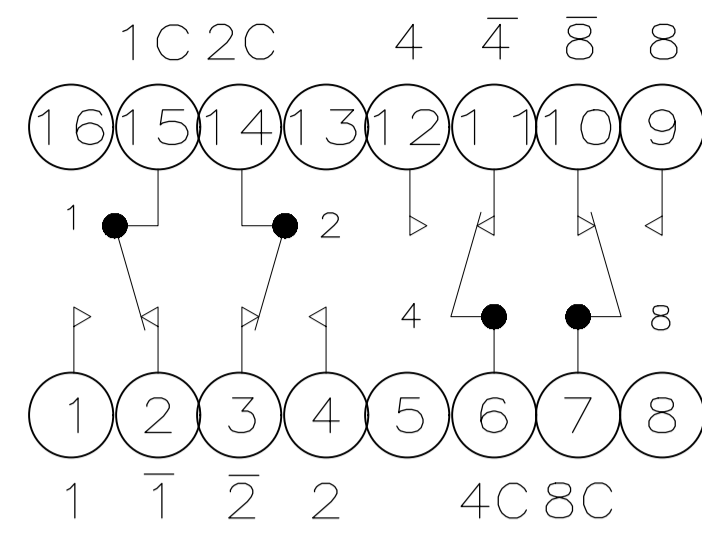


DETAIL A
SCALE 10:1

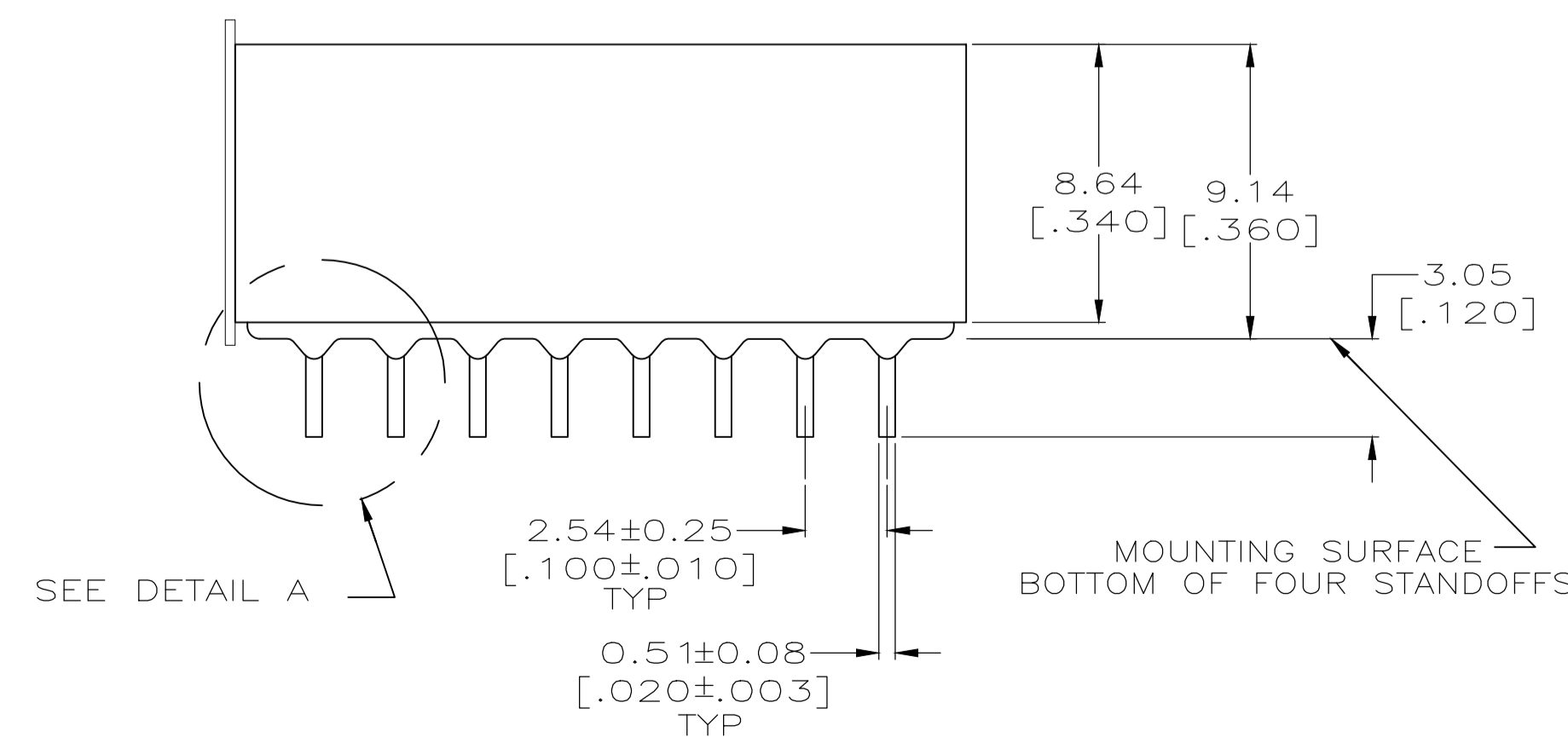
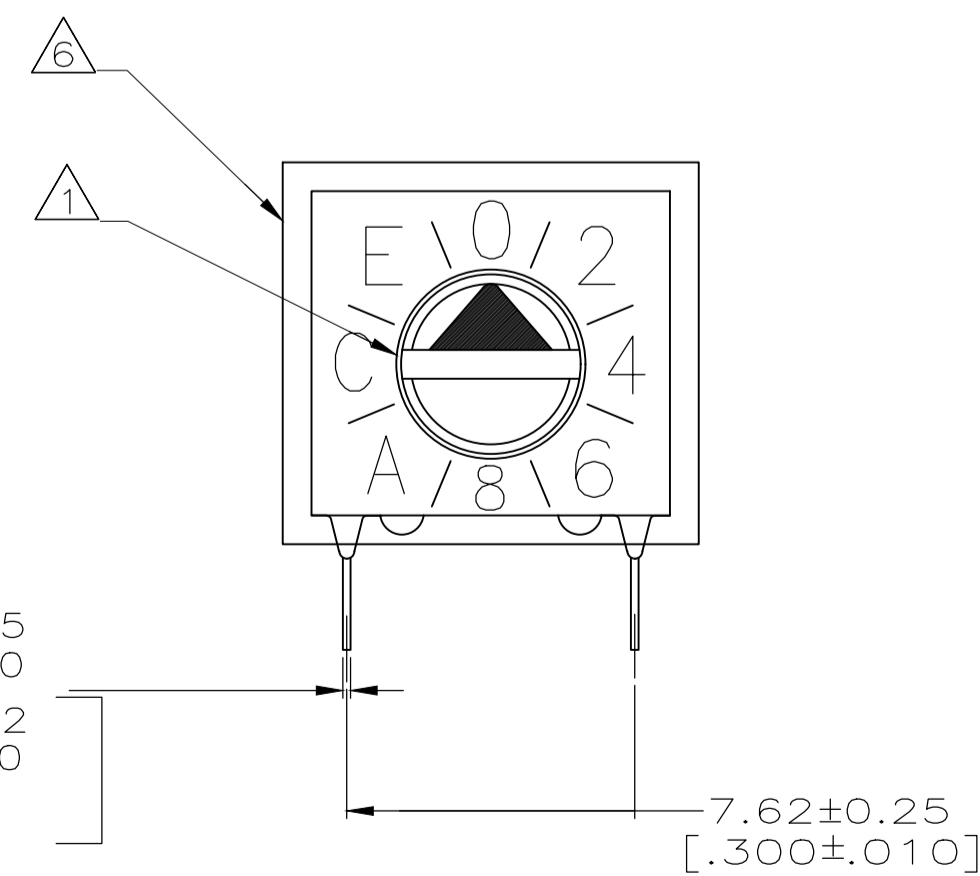
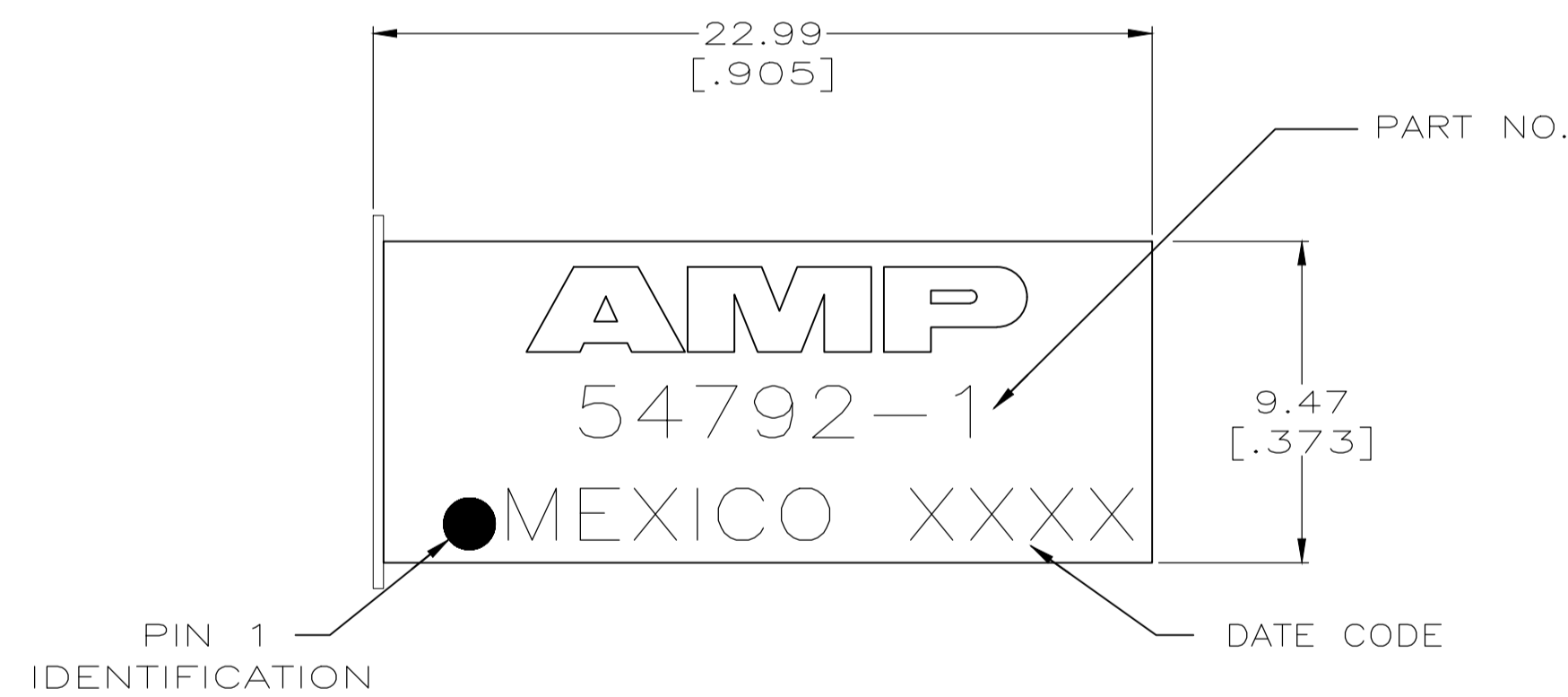


SCHEMATIC
(POSITION 0)

1. SLOT FOR SCREWDRIVER ACTUATION, AFTER REMOVAL OF TAPE.
2. FOR ADDITIONAL SPECIFICATIONS SEE AMP PRODUCT SPEC 108-7066 AND INSTRUCTION SHEET 6811.
3. SWITCH BOTTOM IS SEALED.
4. CONTACT FINISH TO BE 0.00076 [.000030] GOLD OVER NICKEL.
5. MATERIAL:
HOUSING : BLACK POLYESTER
CONTACTS : BERYLLIUM COPPER.
6. REMOVABLE TAPE TO SEAL ACTUATOR END.
7. MARKS WILL BE ADDED BY LASER MARK PROCESS

		POSITION															
		0	1	2	3	4	5	6	7	8	9	A	B	C	D	E	F
COMMON TO	1		●		●		●		●		●		●		●		●
	2			●	●			●	●				●	●			●
	4					●	●	●	●					●	●	●	●
	8										●	●	●	●	●	●	●
	1̄	●		●		●		●		●		●		●		●	
	2̄	●	●			●	●			●	●			●	●		
	4̄	●	●	●	●					●	●	●	●				
	8̄	●	●	●	●	●	●	●	●								

HEXADECIMAL: WITH COMPLEMENT



54792-1
PART NUMBER

THIS DRAWING IS A CONTROLLED DOCUMENT.		DIN W. SORAH 1-8-97	TE Connectivity
DIMENSIONS: mm [INCHES]		CHK R. TALLEY 1-8-97	
TOLERANCES UNLESS OTHERWISE SPECIFIED:		APVD J. ROBB 1-8-97	NAME SWITCH ASSY, PREPROGRAMMED DIP, 16 POSITION, SCREWDRIVER SLOT
0 PLC ± - 1 PLC ± - 2 PLC ± 0.30 [.012] 3 PLC ± - 4 PLC ± - ANGLES ± -		APPLICATION SPEC	RESTRICTED TO
MATERIAL	FINISH	WEIGHT	SIZE A1
CUSTOMER DRAWING		SCALE 5:1	SHEET 1 OF 1