

**Technical specification:**

Rated voltage: IEC 61076-2-104	30V
Current rating: IEC 61076-2-104	3A at 40°C
Insulation resistance: IEC 60512	>=100 MΩ
Pollution degree: IEC 60664-1	3/2
Degree of protection: IEC 60529	IP 67, in mated condition
Temperature range: IEC 60664-1	-30°C ... +80°C
Mating cycles: IEC 60512-9a	>=100

**Materials:**

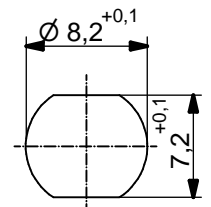
Contact:	CuZn
Contact plating:	Nickel, gold plated
Contact carrier:	PA6, UL 94
Sealing:	NBR
Socket housing:	CuZn, nickel plated
Grouting:	Polyurethane-resin, UL 94

**Installation specification:**

Recommended torque:	0,6 - 0,8 Nm
Conec installation tool:	Torque wrench: 36-000200 Insert across flats 10: 36-000270

**Contact assignment:**

- 1 brown
- 2 white
- 3 blue
- 4 black
- 5 grey



Minimum wall thickness 1,5mm, alternativ panel cut-out d=8,2

Part no:	Description:	Pos	Length L:	Wire:
42-01102	SAL - 8B - FSH5.1 - 0,2	5	0,2m	AWG 24 PVC, UL
42-xxxxx	SAL - 8B - FSH5.1 - ...	5	x	

DO NOT ALTER CAD DRAWING BY HAND Directive 2002/95/EC RoHS compliant	dim. in mm		title: <b>Male socket M8x1 with wire, backmounting</b>		
					dwg no: <b>42K1A392</b>
	tolerance of wire: L <= 0,5m: L + 20mm L > 0,5m: L + 4%		drawn 16.08.12 Franz	part no: <b>see table</b>	
	general tolerance: 0 ± 0,50mm 0,0 ± 0,25mm 0,00 ± 0,10mm		appd. 16.08.12 Mankopf		
THIS DRAWING MAY NOT BE COPIED OR REPRODUCED IN ANY WAY, AND MAY NOT BE PASSED ON TO A THIRD PARTY WITHOUT WRITTEN PERMISSION. OWNERSHIP AND COPYRIGHT OF CONEC GmbH					