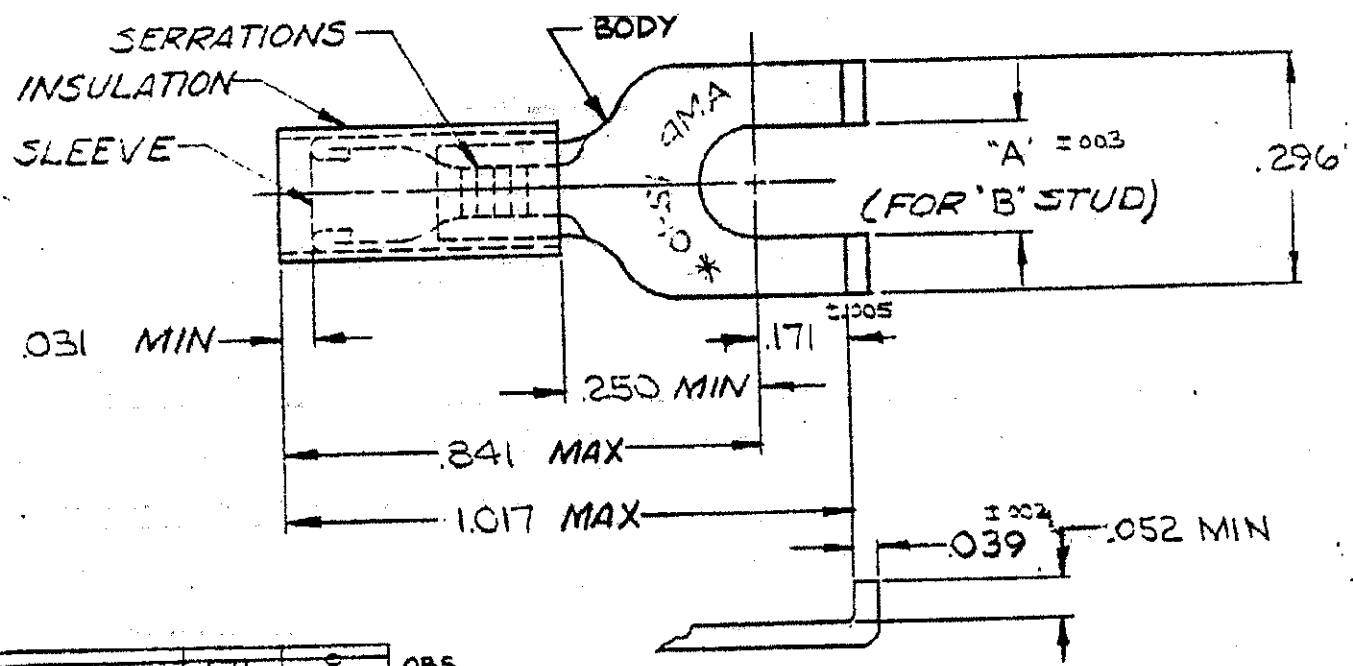


DRAWING MADE IN AMERICAN PROJECTION

REVISIONS			
LTR	DESCRIPTION	DATE	APPROVED
K1	REVISED PER ECO-11-005294	11APR11	HMR



<del>1-325150-0</del>	<del>.171</del>	<del>S</del>	OBS.
1-325150-0	.145	G	
325150	"A"	"B"	

FOR .150 TO .250 WIRE INS. DIA.

1	WIRE TERMINAL	<del>1-325150-0</del>
1	325150 ON TAPE	1-325150-0
50	LOOSE PC. BOX	3-325150-2
1	WIRE TERMINAL	325150

SLEEVE: COPPER (QQ-C-576)  
 BODY: COPPER (QQ-C-576)  
 TIN PL (MIL-T-10727)  
 INSULATION: NYLON  
 COLOR: YELLOW  
 MATERIAL & FINISH

UNLESS OTHERWISE SPECIFIED DIMENSIONS ARE IN INCHES  
 TOLERANCES ON:  
 DECIMALS = .008  
 ANGLES = 5°  
 MATERIAL  
 SEE TABLE

CONTRACT NO. <i>1</i>	
DR. <i>5-13-70</i>	
CHK. <i>5-13-70</i>	
APPD. <i>L. Wabel 5-13-70</i>	
REL. <i>5-14-70</i>	
DSGN/APPD. <i>U</i>	
OTHER APPD.	

**TE** TE Connectivity

NAME: WIRE TERMINAL  
 P.I.D.G. - FLANGED SPADE  
 WIRE SIZE: 12-10

SIZE <b>A</b>	CODE IDENT NO. <b>00779</b>	NUMBER <b>325150</b>
---------------	-----------------------------	----------------------

SCALE: NTS