

# ***DLP5531-Q1 Electronics Evaluation Module User's Guide***

---



---



---

TI's DLP® technology for automotive headlight applications is the only technology on the market that is both fully programmable and offers the highest resolution available. With more than one million addressable pixels per headlight, DLP technology exceeds the resolution of existing adaptive driving beam (ADB) technologies by more than 10,000 times. Automakers and Tier-1 suppliers can use this new programmable ADB solution to maximize brightness for drivers while minimizing the glare of oncoming traffic and reflections from high-gloss traffic signs. DLP technology works with any light source, including LED and laser illumination, and gives designers more precise light distribution on the road, with customizable beam patterns controlled by programmable software. Automakers and Tier-1 suppliers can partially or fully dim individual pixels with this solution, paving the way for the creation of headlight systems that allow drivers to keep their highbeams on in any condition.

The DLP5531-Q1 Electronics Evaluation Module (EVM) allows for evaluation of the DLP5531-Q1 chipset. This module brings together a set of components including the DLP5531-Q1, the DLPC230-Q1, and the TPS99000-Q1 to provide an efficient system for evaluation of high resolution headlight technology. When combined with optics, an input video source, and a computer or other means of control, the evaluation module can be used in a laboratory setting to demonstrate features such as:

- Adaptive Driving Beams
- Glare-Free Beam Steering
- Reflective Traffic Sign Dimming
- Pedestrian Dimming
- Symbol Projection
- OEM Branding

## **Contents**

1	DLP5531-Q1 Electronics EVM Overview .....	3
2	Quick Start .....	11
3	LED Driver.....	13
4	Optics and Mechanics .....	14
5	Programming Flash Steps .....	14
6	SPI & I <sup>2</sup> C Timing.....	14

## **List of Figures**

1	DLP5531-Q1 EVM Formatter Board .....	5
2	DLP5531-Q1 EVM LED Driver Board.....	7
3	Cables Included in DLP5531-Q1 Electronics EVM.....	8
4	DLP5531-Q1 Electronics EVM LED Driver Board Timing Specifications .....	10
5	Cable Connections .....	11
6	Connecting to the DLPC230-Q1 Device Using the DLPC230-Q1 Automotive Control Program .....	12
7	Connecting to the DLPC230-Q1 Device Using the DLPC230-Q1 Automotive Control Program .....	13

## **List of Tables**

1	Formatter Board Ports .....	4
2	Formatter Board Switches .....	4
3	Formatter Board LED Indicators .....	4
4	LED Driver Board Ports.....	6

---

5	LED Driver Board Switches .....	6
6	Electrical Specifications.....	9
7	EVM Components Which Are Not Rated for –40°C to 105°C .....	9
8	LED Driver Board Timing Specifications .....	10
9	Typical Timing for Supported Source Resolutions .....	11
10	LED PWM Drive Current Conversion Reference.....	13

## Trademarks

DLP is a registered trademark of Texas Instruments.  
All other trademarks are the property of their respective owners.

## 1 DLP5531-Q1 Electronics EVM Overview

This user's guide presents an overview of the DLP5531-Q1 Electronics EVM and a general description of the main features and functions. It will also provide first steps for getting started as well as a description of system functions and configurations.

### 1.1 What Is in the DLP5531-Q1 Electronics EVM

The DLP5531-Q1 Electronics EVM consists of two subsystems:

- Formatter Board — Includes the DLP5531-Q1 DMD, the DLPC230-Q1 DMD Controller, and the TPS99000-Q1.
- Illumination Driver Board — Includes illumination drivers and provides power to the formatter board.

### 1.1.1 Formatter Board

The formatter board contains the following ports and switches, see [Figure 1](#).

**Table 1. Formatter Board Ports**

SCHEMATIC REFERENCE	FUNCTION
J1	Host I <sup>2</sup> C, PROJ_ON, HOLD_BOOT, HOST_IRQ
J2	Host SPI
J3	Micro HDMI
J4	OpenLDI (Flex connector)
J5	Photodiode 1 <sup>(1)</sup>
J6	TPS99000-Q1 SPI Debug
J7	Photodiode 2 <sup>(1)</sup>
J8	HUD Driver Interface <sup>(1)</sup>
J9	LED Thermistor <sup>(1)</sup>
J10	Headlight Driver Interface
J11	Formatter Power

<sup>(1)</sup> Port unused for headlight application. Cable not provided.

**Table 2. Formatter Board Switches**

SCHEMATIC REFERENCE / SIGNAL NUMBER	FUNCTION
SW1 (1)	Spread Spectrum Enable Off: Disabled On: Enabled
SW1 (2)	Test Point 4 <b>Must be set to OFF position</b>
SW2 (1)	Host Port Checksum Select Off: CRC On: Checksum
SW2 (2)	Host Interface Select Off: Host SPI On: Host I <sup>2</sup> C
SW2 (3)	Host SPI Mode Off: Mode 0 or 3 On: Mode 1 or 2
SW3	Hold in Boot Off: Do not hold in boot (continue to main application) On: Hold in boot
SW4	PROJ_ON Off: Turn off system On: Turn on system On state is to the left in <a href="#">Figure 1</a>

**Table 3. Formatter Board LED Indicators**

SCHEMATIC REFERENCE	FUNCTION
D6 (Green)	Input power to Formatter Board (from LED Driver Board) Off: No power connected On: Power connected
D7 (Green)	PROJ_ON Off: System Off On: System On
D8 (Red)	HOST_IRQ Off: Interrupt not asserted On: Interrupt asserted

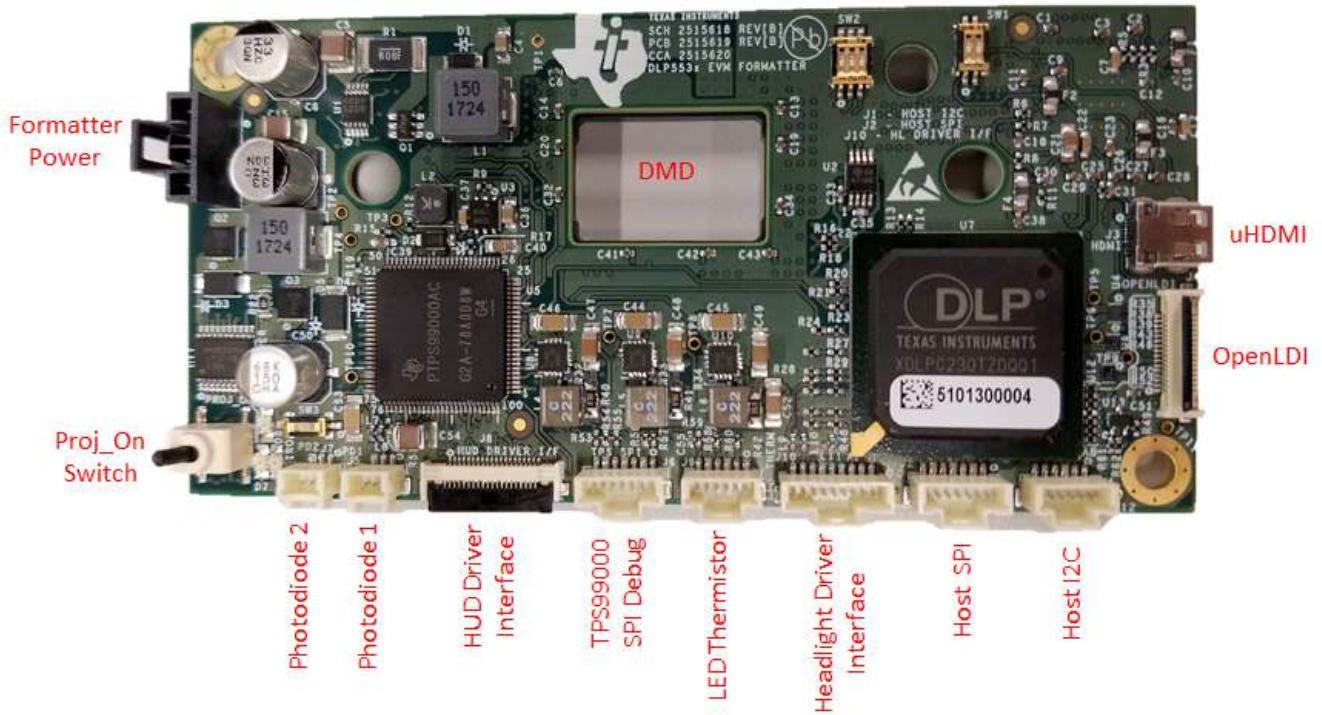



Figure 1. DLP5531-Q1 EVM Formatter Board

### 1.1.1.1 LED Driver Board

The headlight LED driver board contains the following ports and switches, see [Figure 2](#).

**CAUTION**



Hot surface. Contact may cause burns. Do not touch!

**Table 4. LED Driver Board Ports**

SCHEMATIC REFERENCE	FUNCTION
J1	Formatter Power
J2	Input Power
J3	Fan
J4	Headlight Driver Interface
J5	Fan
J6	Fan
J7	LED 0
J8	LED 1
J9	LED 2

**Table 5. LED Driver Board Switches**

SCHEMATIC REFERENCE / SIGNAL NUMBER	FUNCTION
SW1	Fan Enable On position is down in <a href="#">Figure 2</a> .

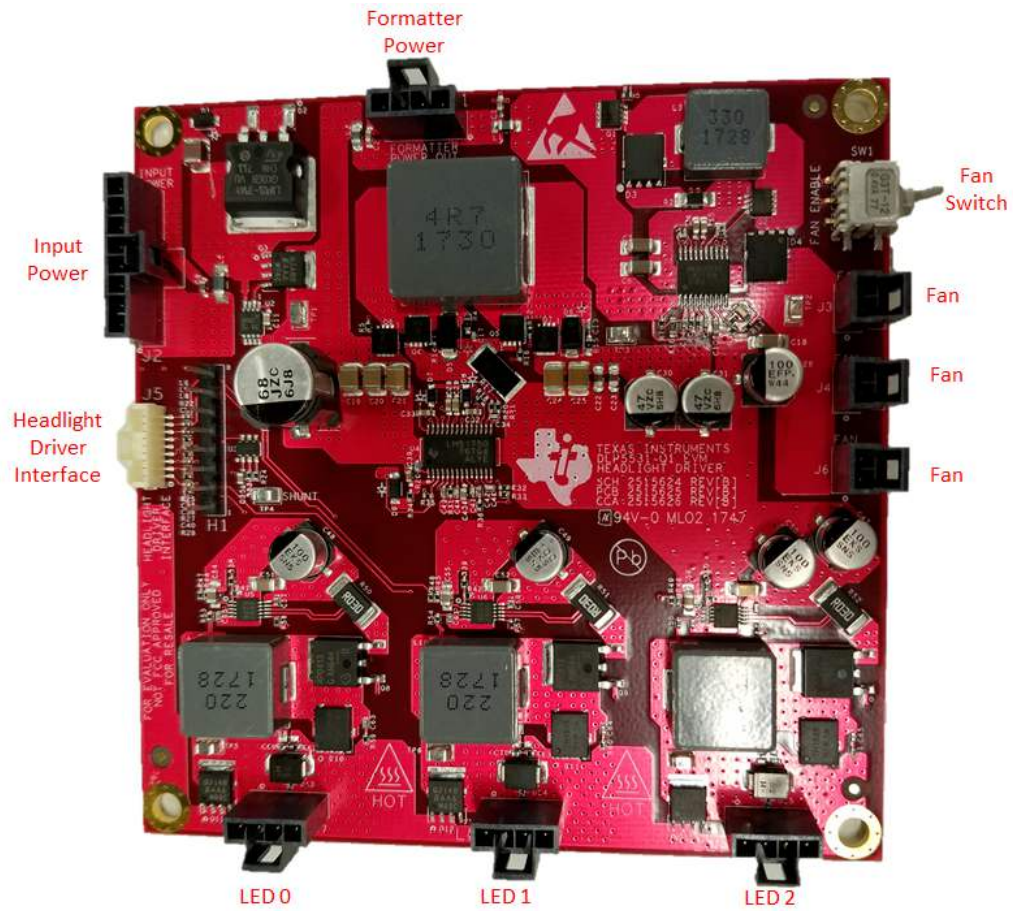


Figure 2. DLP5531-Q1 EVM LED Driver Board

### 1.1.2 Cables

The DLP5531-Q1 Electronics EVM kit contains the following cables, see [Figure 3](#).

NAME	REFERENCE	QUANTITY
Cheetah™ SPI Host Adapter	A	1
Host SPI Cable	B	1
Host I <sup>2</sup> C Cable (Includes PROJ_ON, HOLD_BOOT, HOST_IRQ signals)	C	1
Headlight Driver Interface Cable	D	1
LED Power Cable	E	3
Formatter Power Cable	F	1
Input Power Cable	G	1
Micro HDMI Cable	H	1
OpenLDI Flex Cable	I	1
Fan Power Cable	J	3



Figure 3. Cables Included in DLP5531-Q1 Electronics EVM



## 1.2 Specifications

### 1.2.1 Electrical Specifications

**Table 6. Electrical Specifications**

PARAMETER	MIN	NOM	MAX	UNIT
<b>INPUT</b>				
Voltage	8	12	18	V
Power			96	W
<b>LED DRIVER OUTPUT LOAD</b>				
Voltage (Per LED Channel)	3		12	V
Current (Per LED Channel)			6 <sup>(1)</sup>	A
Power (Sum of All LED Channels)			72	W
<b>FAN LOAD</b>				
Voltage		12		V
Current (Sum of All Fan Channels)			1	A
<b>TEMPERATURE</b>				
Operating DMD Temperature <sup>(2)</sup>	−40		105 <sup>(3)</sup>	°C

<sup>(1)</sup> 8 A may be used, but care must be taken to ensure that individual components and the PCB do not exceed their maximum temperature.

<sup>(2)</sup> Care must be taken to ensure that individual components and PCB do not exceed their maximum temperature when driving high-power load.

<sup>(3)</sup> Some components are only rated to 85°C. Refer to [Table 7](#) for a list of these components.

### 1.2.2 Component Temperature Ratings

The boards and most of the board components are rated to operate between −40°C to 105°C, including the DLP5531-Q1, the DLPC230-Q1, and the TPS99000-Q1.

Some components on board, such as switches, connectors, and indicator LEDs, do not meet this temperature rating. The specifications for all EVM components which are not rated between −40°C to 105°C are listed in [Table 7](#). Please refer to the EVM bill of materials to review the temperature specifications of all components used in the EVM design.

**Table 7. EVM Components Which Are Not Rated for −40°C to 105°C**

Board	Reference	Part Number	Manufacturer	Description	Temperature Minimum (°C)	Temperature Maximum (°C)
Formatter	D6, D7	LTST-C171KGKT	Lite-On	LED, GREEN 0805	−55	85
Formatter	D8	LTST-C171KRKT	Lite-On	LED, RED 0805	−55	85
Formatter	J3	685119248123	Würth	CONN MICRO HDMI RIGHT ANGLE	−40	85
Formatter	SW1	CVS-02TB	Copal Electronics Inc	SWITCH DIP SLIDE 2-POS 1 MM 6 V	−40	85
Formatter	SW2	CVS-03TB	Copal Electronics Inc	SWITCH DIP SLIDE 3-POS 1 MM 6 V	−40	85
Formatter	SW3	CVS-01TB	Copal Electronics Inc	SWITCH DIP SLIDE 1-POS 1 MM 6 V	−40	85
Formatter	SW4	GT12MSCBE	C&K Comp	SWITCH, SPST, GULL	−30	85
Formatter	U4, U6, U12, U503, U505	PCMF2HDMI2SZ	Nexperia	COMMON MODE CHOKE 4LN SMD ESD	−40	85

**Table 7. EVM Components Which Are Not Rated for –40°C to 105°C (continued)**

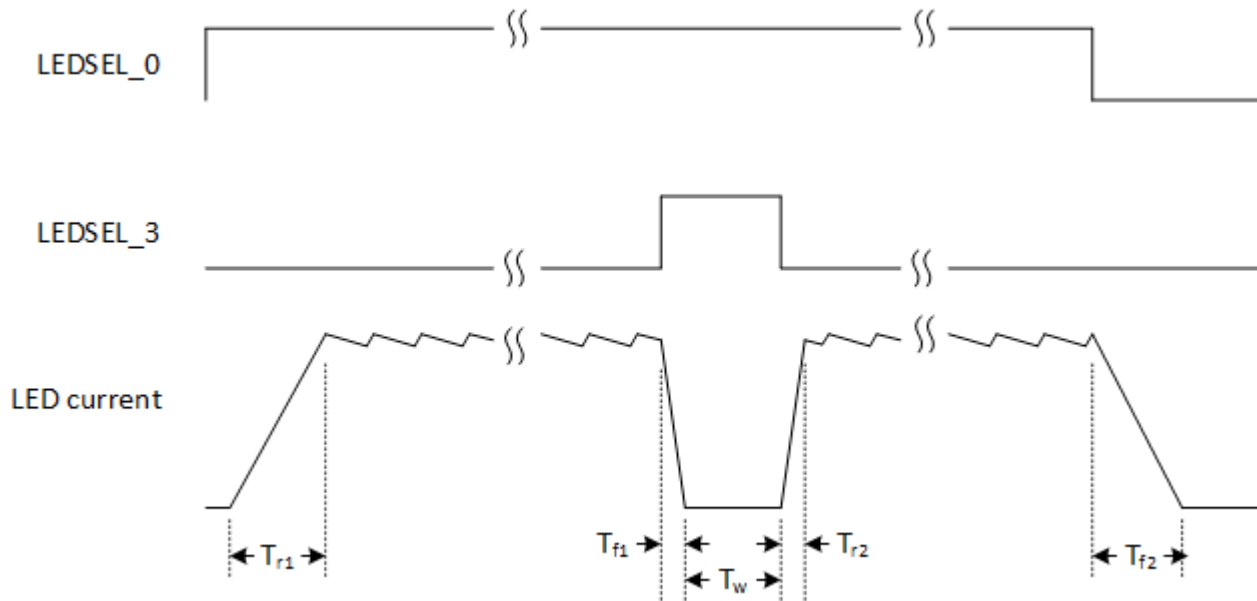
Board	Reference	Part Number	Manufacturer	Description	Temperature Minimum (°C)	Temperature Maximum (°C)
Formatter	U504	TFP401AIPZPRQ1	Texas Instruments	IC PANELBUS DVI RCVR 100-HTQFP	–40	85
LED Driver	SW1	G3T12AH-R	NKK Switches	SWITCH, SPDT, 28 V, 100 mA	–30	85

The Formatter and LED Driver PCBs have a UL flame rating of 130°C maximum.

The DLP5531-Q1 Electronics EVM is not a production design. It is intended for evaluation only.

### 1.2.3 Driver Requirements

The DLP5531-Q1 chipset, used with LED illumination, requires illumination modulation. This illumination modulation turns off the light output during micromirror reset, which improves system contrast. For the system timing specifications of the DLP5531-Q1 Electronics EVM, see [Figure 4](#).



**Figure 4. DLP5531-Q1 Electronics EVM LED Driver Board Timing Specifications**

The timing specifications are shown in [Table 8](#).

**Table 8. LED Driver Board Timing Specifications**

PARAMETER	VALUE
$T_{r1}, T_{f2}$	<50 $\mu$ s
$T_{f1}, T_{r2}$	<2 $\mu$ s
$T_w$	minimum = 1 $\mu$ s

### 1.2.4 Video Specifications

The following resolutions are programmed in the Extended Display Identification Data (EDID). Some video sources may not support all resolutions.

- 1152 × 1152
- 1152 × 576
- 576 × 288

The input source specifications in the EDID of the EVM are outlined in [Table 9](#).

**Table 9. Typical Timing for Supported Source Resolutions**

Horizontal Resolution	Vertical Resolution	Horizontal Blanking				Vertical Blanking				Vertical Rate (Hz)	Pixel Clock (MHz)
		Total	Sync (Pixel Clocks)	Back Porch (Pixel Clocks)	Front Porch (Pixel Clocks)	Total	Sync (Lines)	Back Porch (Lines)	Front Porch (Lines)		
1152	1152	80	8	32	40	33	8	22	3	60	87.59
1152	576	80	8	32	40	17	8	6	3	60	43.83
576	288	322	8	154	160	181	8	158	15	59.98	25.26

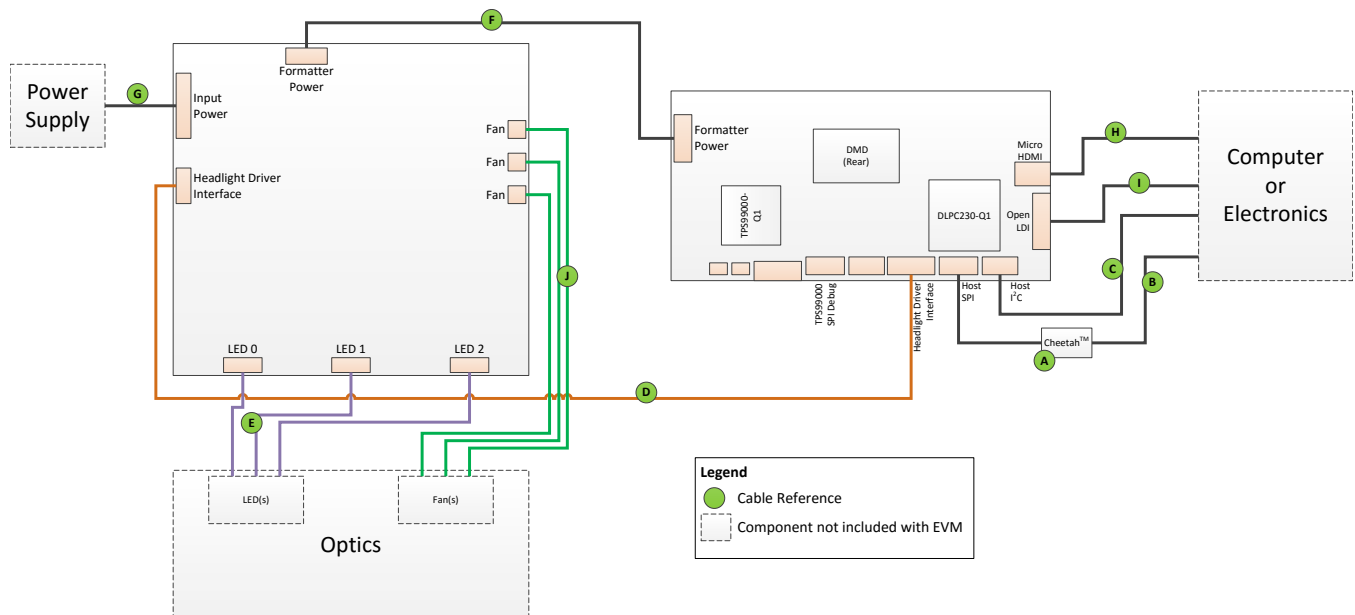
## 2 Quick Start

Use the following instructions to setup your DLP5531-Q1 Electronics EVM and PC.

### 2.1 Kit Assembly Instructions

A diagram of all connections is shown in [Figure 5](#).

1. Connect the Headlight Driver Interface cable to the Formatter Board (J10) and the LED Driver Board (J4).
2. Connect the Host SPI cable to the Formatter Board (J2) and the Cheetah adapter. Connect the Cheetah adapter's USB cable to PC.
3. Connect the Formatter Power cable to the Formatter Board (J11) and the LED Driver Board (J1).
4. Connect the LED power cable to any of the LED Driver Board LED ports (J7, J8, J9). Note that some ports may be disabled by flash setting. LED 0 (J7) is used by default.
5. Connect the Fan Power cable to any of the LED Driver Board fan ports (J3, J5, J6). Confirm the fan switch on the LED Driver Board (SW1) is in the ON position.
6. Connect the Micro HDMI cable to the Formatter Board (J3). Connect the Micro HDMI cable to PC HDMI port.
7. Connect the Power Input cable to the LED Driver Board (J2).



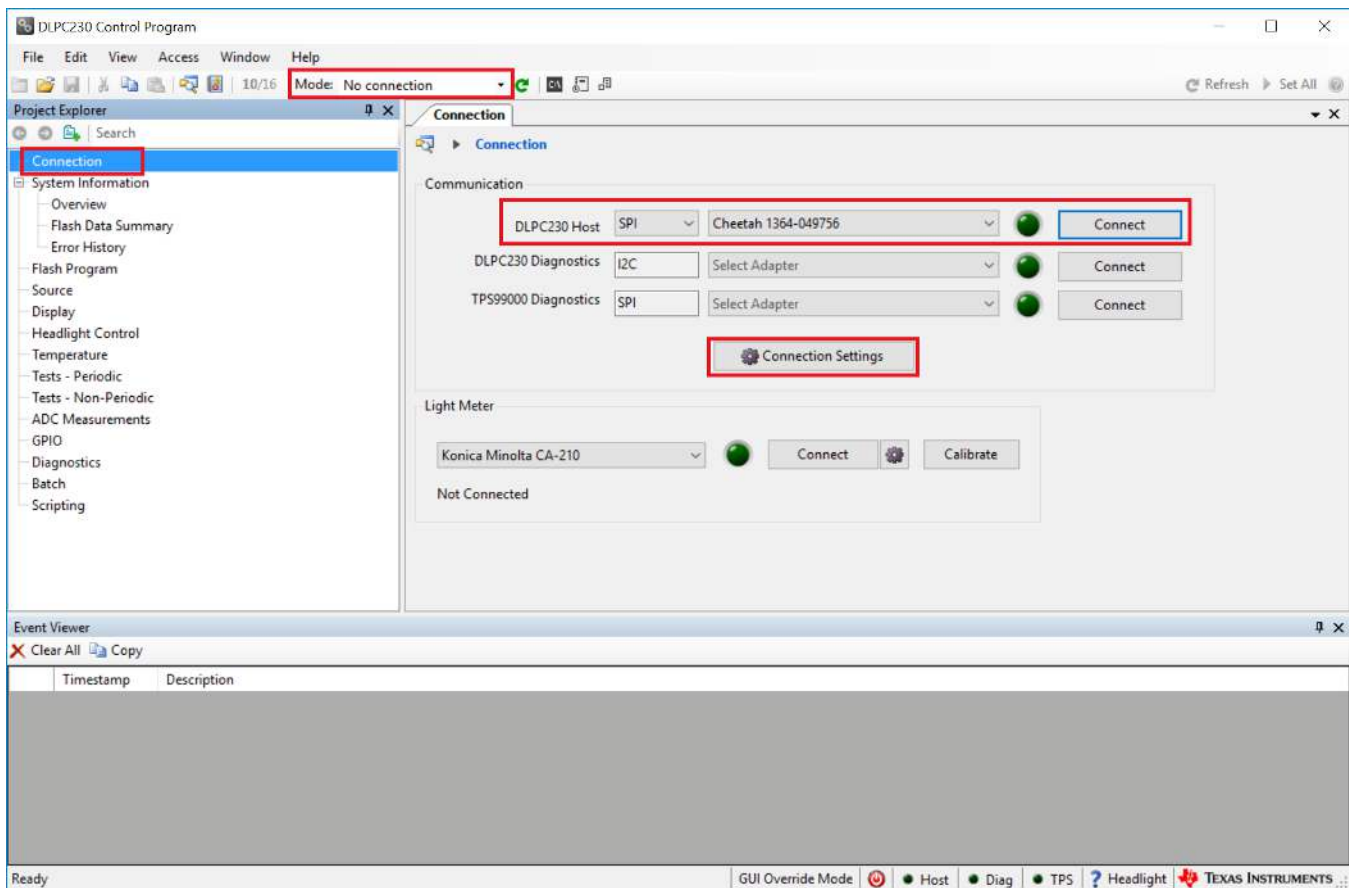
**Figure 5. Cable Connections**

## 2.2 Power-Up

1. Connect input power cable to a power supply that meets input power specifications defined in [Section 1.2](#). The red cable for the V+ terminal and black cable for the V- terminal.
2. Turn on the supply power. Once powered up, a Formatter Board LED indicator (D6) should illuminate green.
3. Turn the PROJ\_ON switch (SW4) ON. The ON position is towards the perimeter of the board, and OFF is towards the DMD. A Formatter Board LED indicator (D7) should illuminate green.

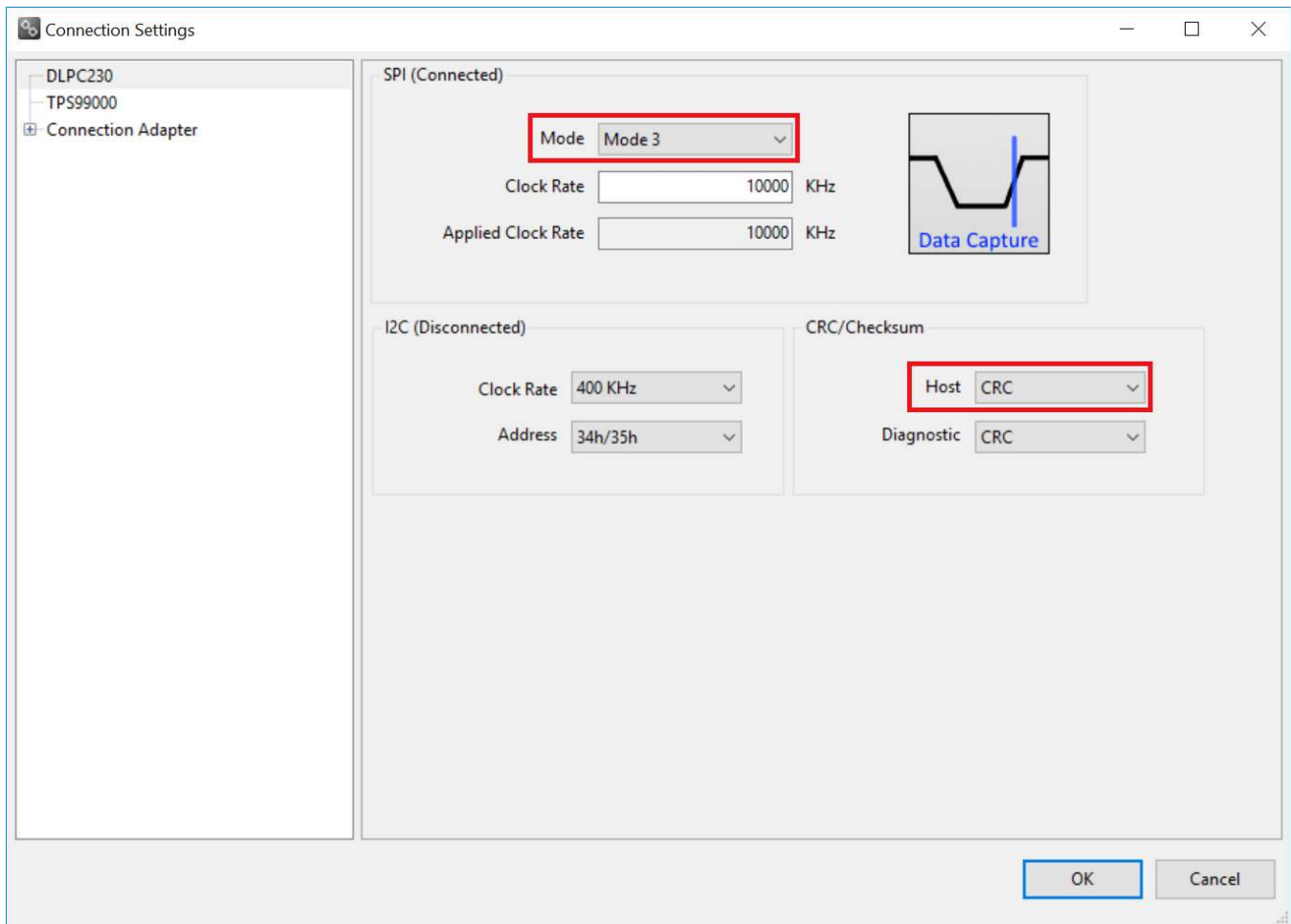
### 2.2.1 Software Setup

- Download and install the DLPC230-Q1 Control Program (<http://www.ti.com/mysecuresoftware>).
- Install Total Phase Cheetah USB adapter (<http://www.totalphase.com/products/usb-driverswindows>).
- Use the DLPC230-Q1 Control Program to connect to the system using the Cheetah USB to SPI adapter and turn the system on.
- To connect, set the DLPC230-Q1 Host to SPI and select the Cheetah from the drop down menu.



**Figure 6. Connecting to the DLPC230-Q1 Device Using the DLPC230-Q1 Automotive Control Program**

- Select "Connection Settings" to confirm the SPI configuration matches the Formatter Board switch settings described in [Table 2](#). Specifically, SPI mode and CRC/Checksum may vary based on switch settings. Press "OK" once configuration is complete.



**Figure 7. Connecting to the DLPC230-Q1 Device Using the DLPC230-Q1 Automotive Control Program**

- Click the Connect button. The green circle should then light up to indicate that connection was successful to the Cheetah Adapter.

### 3 LED Driver

Section 1.2 defines the LED driver load specifications.

The LED brightness can be controlled through PWM output from the DLPC230-Q1. Using the DLPC230-Q1 Automotive Control Program "Headlight Control" tab, the PWM slider bars (PWM0, PWM1, and PWM2) control the current through each LED driver channel. Note that the PWM control may exceed the maximum current specification of some LEDs in certain LED configurations. Table 10 provides reference conversions from PWM level to drive current for commonly used current levels.

**Table 10. LED PWM Drive Current Conversion Reference**

PWM LEVEL	DRIVE CURRENT (A)
0	See <sup>(1)</sup>
256	2
512	4
768	6
1024	8

<sup>(1)</sup> Some current will continue to flow through the LED with a PWM level of 0 and light output may still be visible. To fully remove LED current, the system must be set to standby mode.

## 4 Optics and Mechanics

Optics and mechanics are not included in the DLP5531-Q1 Electronics EVM.

The EVM includes a heat sink and thermal pad, which are attached to the LED driver board. A DMD heatsink is recommended, but is not included in the DLP5531-Q1 Electronics EVM.

## 5 Programming Flash Steps

1. Using the DLPC230-Q1 Automotive Control Program, which is connected to the EVM, navigate to the "Flash Program" tab.
2. Using the folder icon, select an Image File (.bin) and open it.
3. Click "Program and Verify Flash Memory."

Note that if the device is in Display mode, it will automatically be switched to Standby during programming.

## 6 SPI & I<sup>2</sup>C Timing

For more information on SPI and I<sup>2</sup>C specifications, see the DLPC230-Q1 data sheet.

## IMPORTANT NOTICE FOR TI DESIGN INFORMATION AND RESOURCES

Texas Instruments Incorporated ("TI") technical, application or other design advice, services or information, including, but not limited to, reference designs and materials relating to evaluation modules, (collectively, "TI Resources") are intended to assist designers who are developing applications that incorporate TI products; by downloading, accessing or using any particular TI Resource in any way, you (individually or, if you are acting on behalf of a company, your company) agree to use it solely for this purpose and subject to the terms of this Notice.

TI's provision of TI Resources does not expand or otherwise alter TI's applicable published warranties or warranty disclaimers for TI products, and no additional obligations or liabilities arise from TI providing such TI Resources. TI reserves the right to make corrections, enhancements, improvements and other changes to its TI Resources.

You understand and agree that you remain responsible for using your independent analysis, evaluation and judgment in designing your applications and that you have full and exclusive responsibility to assure the safety of your applications and compliance of your applications (and of all TI products used in or for your applications) with all applicable regulations, laws and other applicable requirements. You represent that, with respect to your applications, you have all the necessary expertise to create and implement safeguards that (1) anticipate dangerous consequences of failures, (2) monitor failures and their consequences, and (3) lessen the likelihood of failures that might cause harm and take appropriate actions. You agree that prior to using or distributing any applications that include TI products, you will thoroughly test such applications and the functionality of such TI products as used in such applications. TI has not conducted any testing other than that specifically described in the published documentation for a particular TI Resource.

You are authorized to use, copy and modify any individual TI Resource only in connection with the development of applications that include the TI product(s) identified in such TI Resource. NO OTHER LICENSE, EXPRESS OR IMPLIED, BY ESTOPPEL OR OTHERWISE TO ANY OTHER TI INTELLECTUAL PROPERTY RIGHT, AND NO LICENSE TO ANY TECHNOLOGY OR INTELLECTUAL PROPERTY RIGHT OF TI OR ANY THIRD PARTY IS GRANTED HEREIN, including but not limited to any patent right, copyright, mask work right, or other intellectual property right relating to any combination, machine, or process in which TI products or services are used. Information regarding or referencing third-party products or services does not constitute a license to use such products or services, or a warranty or endorsement thereof. Use of TI Resources may require a license from a third party under the patents or other intellectual property of the third party, or a license from TI under the patents or other intellectual property of TI.

TI RESOURCES ARE PROVIDED "AS IS" AND WITH ALL FAULTS. TI DISCLAIMS ALL OTHER WARRANTIES OR REPRESENTATIONS, EXPRESS OR IMPLIED, REGARDING TI RESOURCES OR USE THEREOF, INCLUDING BUT NOT LIMITED TO ACCURACY OR COMPLETENESS, TITLE, ANY EPIDEMIC FAILURE WARRANTY AND ANY IMPLIED WARRANTIES OF MERCHANTABILITY, FITNESS FOR A PARTICULAR PURPOSE, AND NON-INFRINGEMENT OF ANY THIRD PARTY INTELLECTUAL PROPERTY RIGHTS.

TI SHALL NOT BE LIABLE FOR AND SHALL NOT DEFEND OR INDEMNIFY YOU AGAINST ANY CLAIM, INCLUDING BUT NOT LIMITED TO ANY INFRINGEMENT CLAIM THAT RELATES TO OR IS BASED ON ANY COMBINATION OF PRODUCTS EVEN IF DESCRIBED IN TI RESOURCES OR OTHERWISE. IN NO EVENT SHALL TI BE LIABLE FOR ANY ACTUAL, DIRECT, SPECIAL, COLLATERAL, INDIRECT, PUNITIVE, INCIDENTAL, CONSEQUENTIAL OR EXEMPLARY DAMAGES IN CONNECTION WITH OR ARISING OUT OF TI RESOURCES OR USE THEREOF, AND REGARDLESS OF WHETHER TI HAS BEEN ADVISED OF THE POSSIBILITY OF SUCH DAMAGES.

You agree to fully indemnify TI and its representatives against any damages, costs, losses, and/or liabilities arising out of your non-compliance with the terms and provisions of this Notice.

This Notice applies to TI Resources. Additional terms apply to the use and purchase of certain types of materials, TI products and services. These include; without limitation, TI's standard terms for semiconductor products (<http://www.ti.com/sc/docs/stdterms.htm>), [evaluation modules](#), and [samples](http://www.ti.com/sc/docs/sampterm.htm) (<http://www.ti.com/sc/docs/sampterm.htm>).

Mailing Address: Texas Instruments, Post Office Box 655303, Dallas, Texas 75265  
Copyright © 2018, Texas Instruments Incorporated