

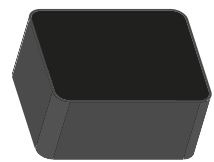
ECN/PCN No.: 3542

For Manufacturer		
Product Description: SAW Filter	Abracon Part Number / Part Series: AFS20A05-719-T3	<input type="checkbox"/> Series <input checked="" type="checkbox"/> Part Number
Affected Revision: A	New Revision: EOL	Application: <input type="checkbox"/> Safety <input checked="" type="checkbox"/> Non-Safety
Prior to Change: AFS20A05-719-T3 https://abracon.com/Filters/SAW%20FILTERS/AFS20A05-719.00-T3.pdf		
After Change: EOL		
Cause/Reason for Change: Product series EOL		
Change Plan		
Effective Date: Immediate	Additional Remarks:	
Change Declaration:		
Issued Date: <div style="text-align: right; margin-right: 100px;">4/27/20</div>		
For Abracon EOL only		
Last Time Buy (if applicable): June 30 th , 2020	Alternate Part Number / Part Series: None Available	
Additional Approval:	Additional Approval:	Additional Approval:
Customer Approval (If Applicable)		
Qualification Status: <div style="text-align: center; margin-top: 5px;"> <input type="checkbox"/> Approved <input type="checkbox"/> Not accepted </div> <i>Note: It is considered approved if there is no feedback from the customer 1 month after ECN/PCN is released.</i>		
Customer Part Number:	Customer Project:	
Company Name:	Company Representative:	Representative Signature:
Customer Remarks:		

Surface Mount 719.0MHz SAW Filter

AFS20A05-719.00-T3

 RoHS/RoHS II Compliant



2.0 x 1.6 x 0.75 mm

Moisture Sensitivity Level (MSL) – This product is Hermetically Sealed and not Moisture Sensitive - MSL = N/A: Not Applicable

FEATURES:

- 2.0 x 1.6 x 0.75 mm low profile SMT package
- Low Insertion loss
- Excellent selectivity with high out-of-band rejection

APPLICATIONS:

- Wireless Communication
- Remote Control
- Cellular Phones

ELECTRICAL SPECIFICATIONS:

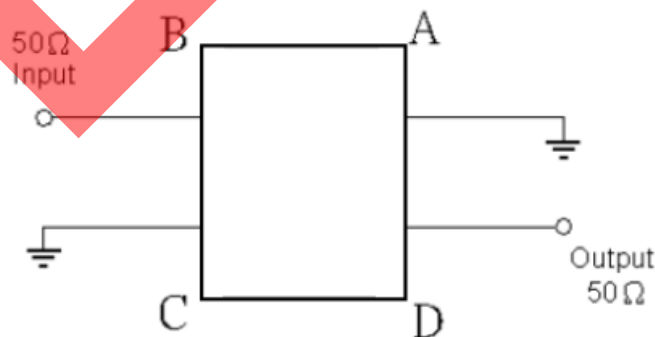
Maximum Ratings

Item	Value
Input Power Level	+10 dBm max.
DC Permissive Voltage	3V DC max.
Operating Temperature Range	-30°C to + 85°C
Storage Temperature Range	-40°C to + 85°C

Parameters	Minimum	Typical	Maximum	Units	Notes
Center Frequency (f_c)		719		MHz	
Insertion Loss (IL)		3.00	3.20	dB	716.5 ~ 721.5MHz
Effective Bandwidth		5.00		MHz	
Amplitude Ripple		0.90	2.20	dB	716.5 ~ 721.5MHz
Group Delay Variation		38	95	ns	716.5 ~ 721.5MHz
Worst-Case Input / Output Return Loss	5	8		dB	716.5 ~ 721.5MHz
Stop-band Attenuation (Referenced to 0.0 dB)	40	49		dB	DC ~ 690MHz
	35	44			690 ~ 704MHz
	30	44			704 ~ 710MHz
	25	30			728 ~ 734MHz
	27	40			734 ~ 750MHz
	37	50			750 ~ 824MHz
	45	51			824 ~ 960MHz
	32	35			960 ~ 2500MHz
Source Impedance (Z_s)		50		Ω	See note # 1
Load Impedance (Z_L)		50		Ω	See note # 1

Note #1: No matching network required for operation into 50 Ω 's

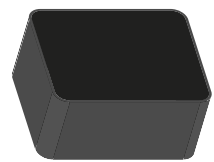
TEST CIRCUIT:



Surface Mount 719.0MHz SAW Filter

AFS20A05-719.00-T3

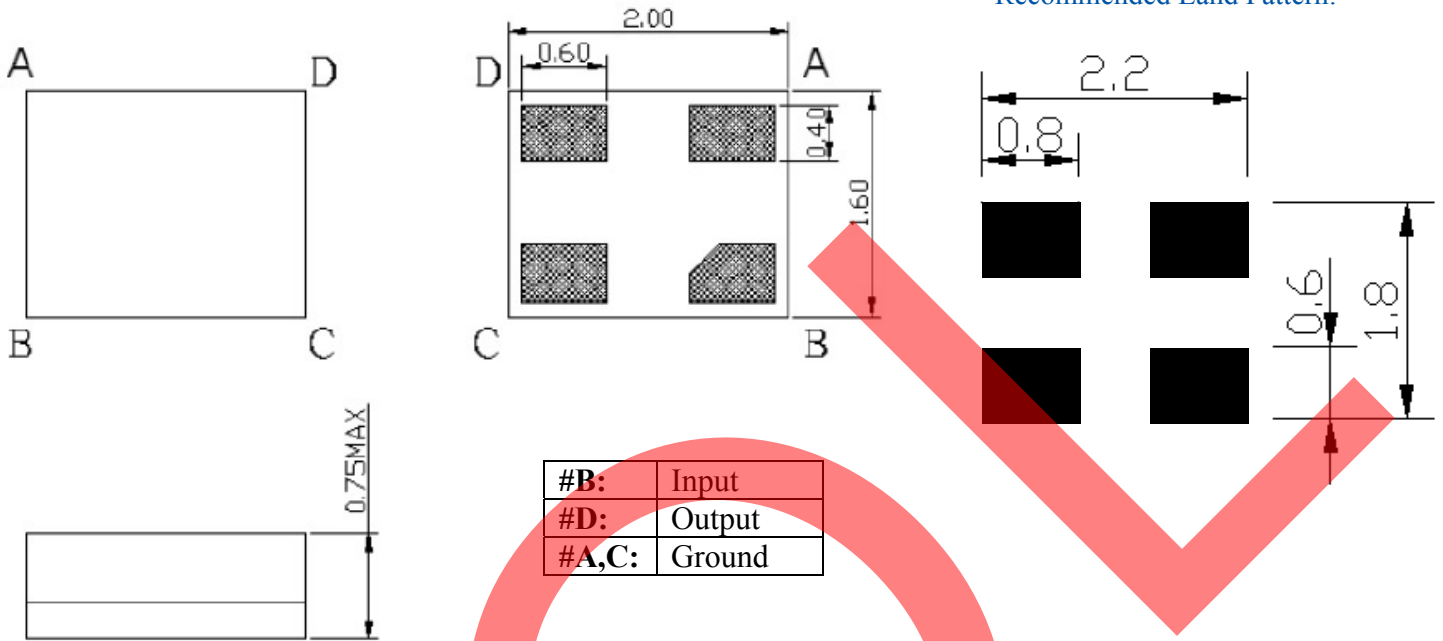
 RoHS/RoHS II Compliant



2.0 x 1.6 x 0.75 mm

OUTLINE DIMENSIONS:

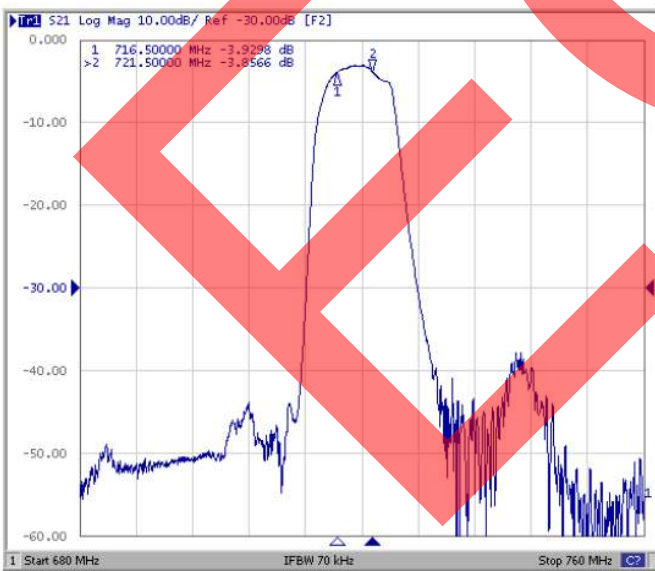
Recommended Land Pattern:



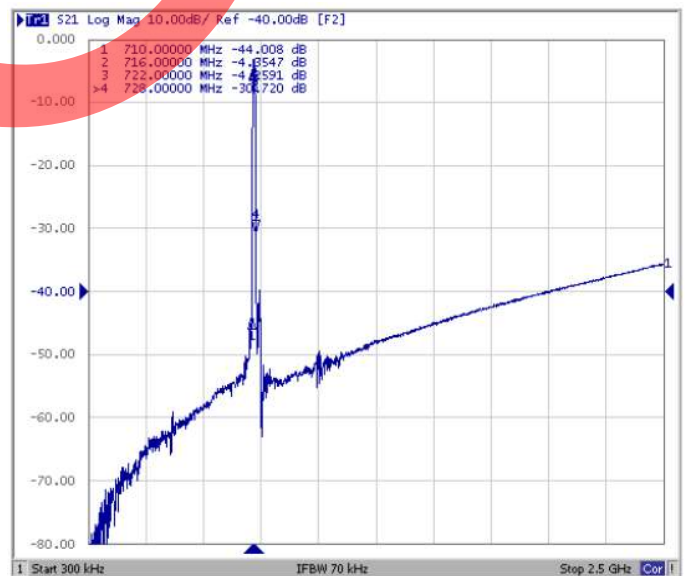
*All Dimensions are in mm

FREQUENCY CHARACTERISTICS:

Filter Frequency Response (Narrowband)



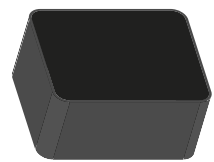
Filter Frequency Response (Wideband)



Surface Mount 719.0MHz SAW Filter

AFS20A05-719.00-T3

 RoHS/RoHS II Compliant



2.0 x 1.6 x 0.75 mm

FREQUENCY CHARACTERISTIC:

Input Return Loss (S11)

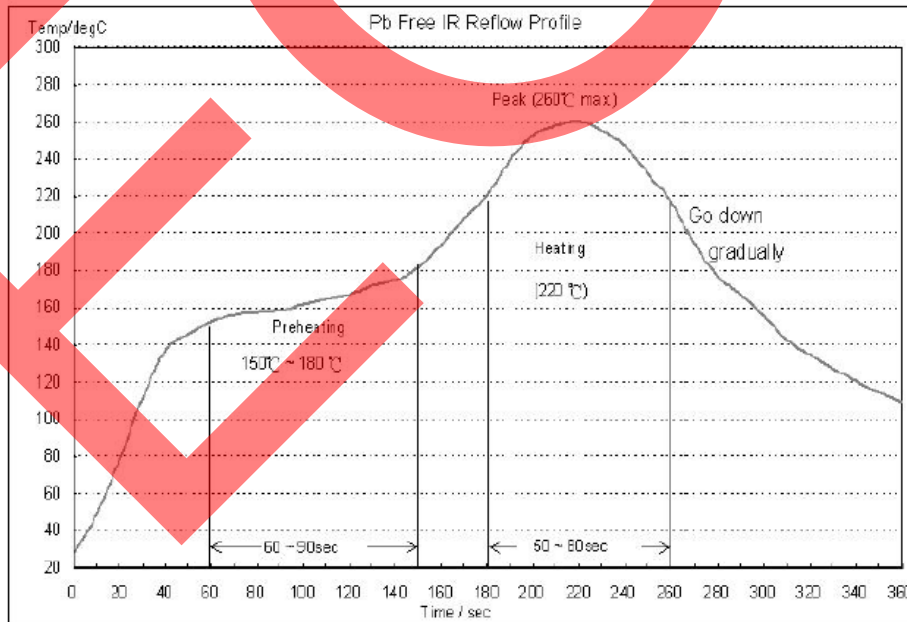


Output Return Loss (S22)



Note # 2: Detail S-parameter information (.s2p file) available upon request

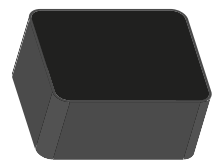
REFLOW PROFILE:



Surface Mount 719.0MHz SAW Filter

AFS20A05-719.00-T3

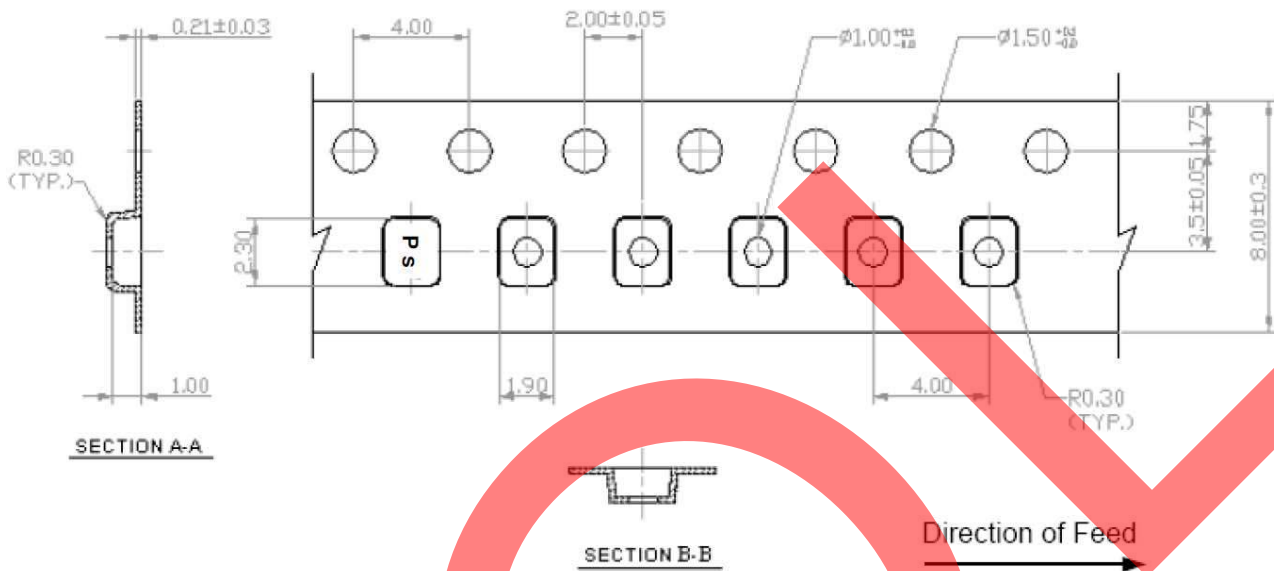
 RoHS/RoHS II Compliant



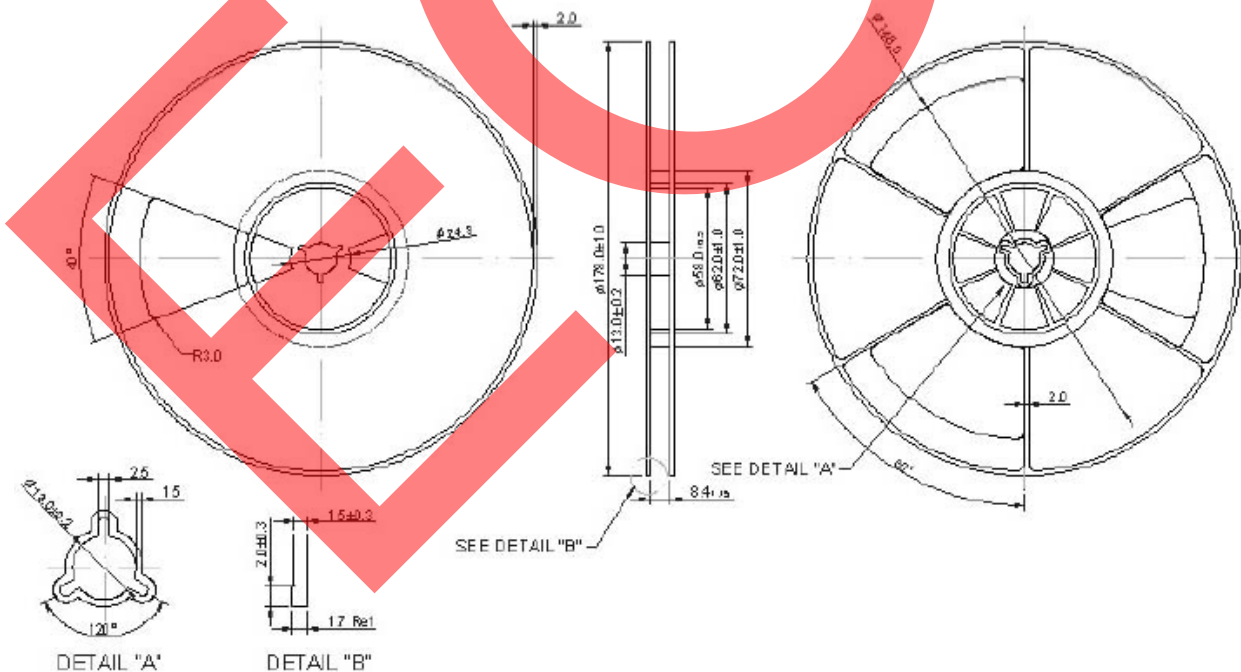
2.0 x 1.6 x 0.75 mm

PACKAGING: 3,000 units/reel

Tape Dimensions



Reel Dimensions



Dimensions: mm

ATTENTION: Abracon Corporation's products are COTS – Commercial-Off-The-Shelf products; suitable for Commercial, Industrial and, where designated, Automotive Applications. Abracon's products are not specifically designed for Military, Aviation, Aerospace, Life-dependant Medical applications or any application requiring high reliability where component failure could result in loss of life and/or property. For applications requiring high reliability and/or presenting an extreme operating environment, written consent and authorization from Abracon Corporation is required. Please contact Abracon Corporation for more information.

ABRACON IS
ISO 9001:2008
CERTIFIED



2 Faraday, Suite# B | Irvine | CA 92618 **Revised: 03.10.15**
Ph. 949.546.8000 | Fax. 949.546.8001
Visit www.abracon.com for Terms and Conditions of Sale