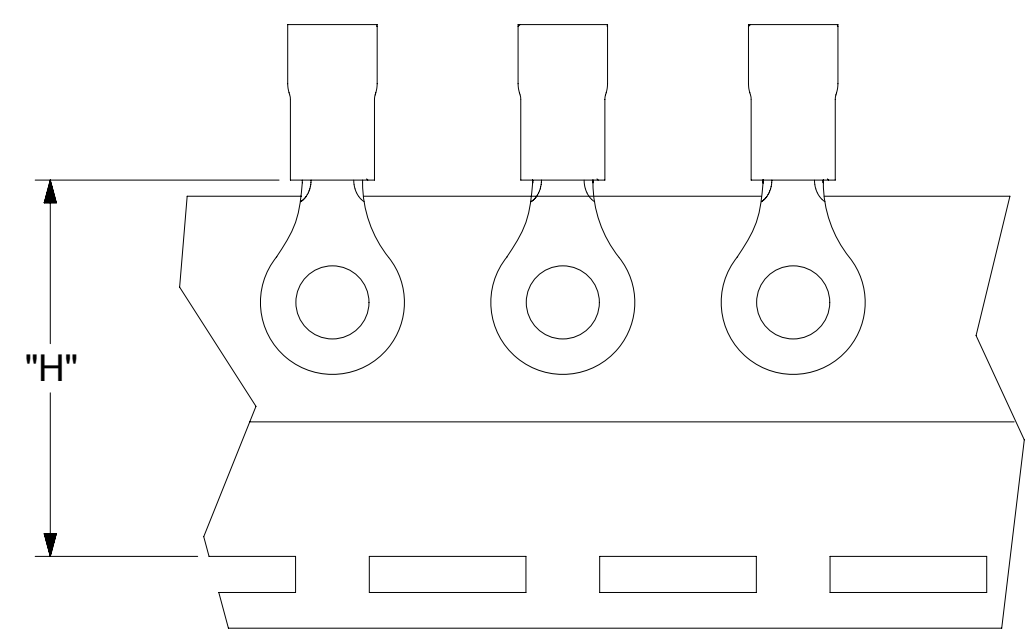
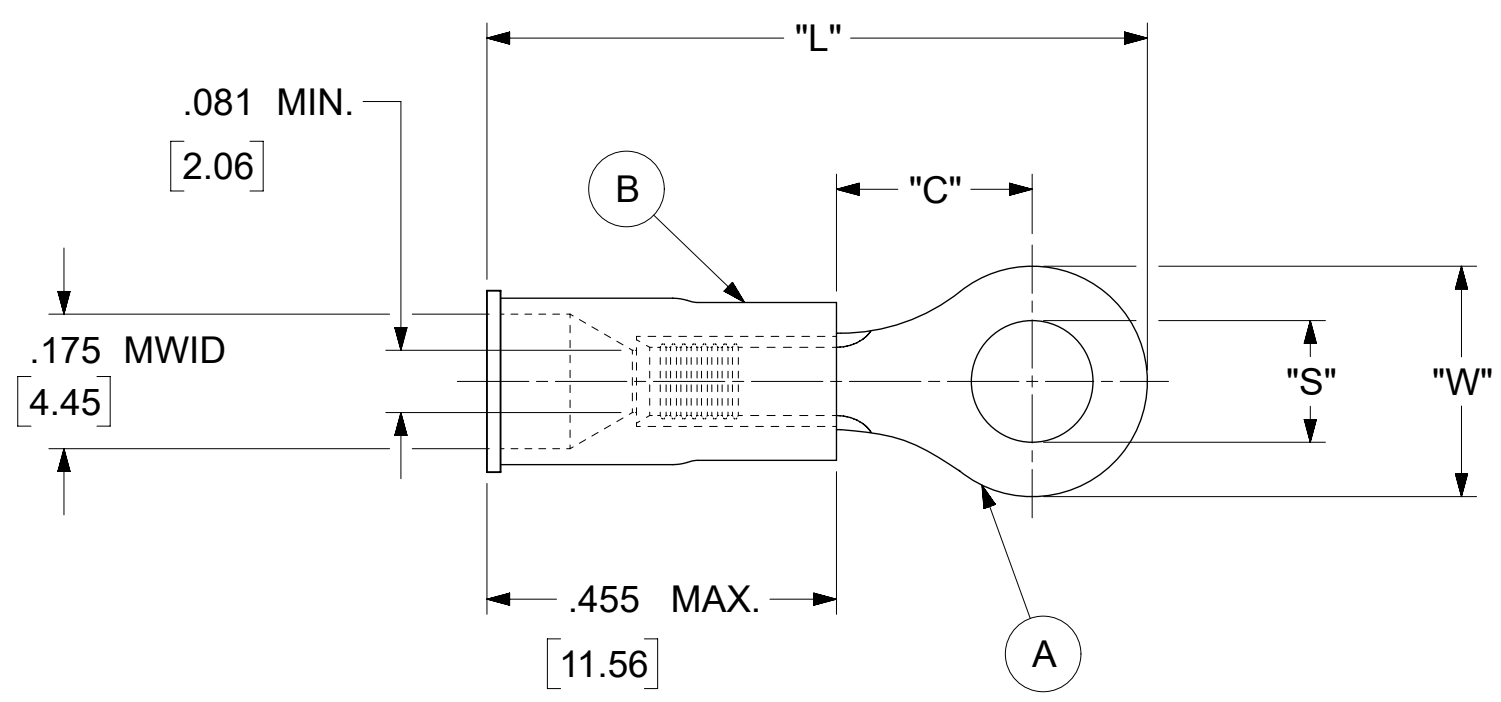


| LOOSE PIECE     |                    | TAPE MOUNTED    |                    | SPECIFICATIONS |                     |                     |              |               |              |                                  |
|-----------------|--------------------|-----------------|--------------------|----------------|---------------------|---------------------|--------------|---------------|--------------|----------------------------------|
| MATERIAL NUMBER | ENGINEERING NUMBER | MATERIAL NUMBER | ENGINEERING NUMBER | STUD SIZE      | "S"<br>±.005 [0.13] | "W"<br>±.010 [0.25] | "C"<br>MIN.  | "L"<br>MAX.   | "H"          | STOCK ±.001 [0.025]<br>THICKNESS |
| 190540073       | B-218-14X          | ---             | ---                | 14             | .265 [6.73]         | .534 [13.56]        | .554 [14.07] | 1.311 [33.30] | .980 [24.89] | .031 [.79]                       |
| 190540075       | B-218-38X          | ---             | ---                | 38             | .390 [9.91]         |                     |              |               |              |                                  |
| 190540077       | B-218-56X          | ---             | ---                | 56             | .328 [8.33]         |                     |              |               |              |                                  |
| 190540080       | B-223-04X          | ---             | ---                | 4              | .119 [3.02]         | .250 [6.35]         | .209 [5.31]  | .835 [21.21]  | .980 [24.89] | .031 [.79]                       |
| 190540081       | B-223-06X          | 190540082       | B-223-06XT         | 6              | .146 [3.71]         |                     |              |               |              |                                  |
| 190540083       | B-223-08X          | ---             | ---                | 8              | .173 [4.39]         |                     |              |               |              |                                  |
| 190540086       | B-225-14X          | 190540087       | B-225-14XT         | 14             | .265 [6.73]         | .467 [11.86]        | .388 [9.86]  | 1.112 [28.24] | .980 [24.89] | .031 [.79]                       |
| 190540088       | B-225-56X          | ---             | ---                | 56             | .328 [8.33]         |                     |              |               |              |                                  |
| 190540107       | B-237-04X          | ---             | ---                | 4              | .119 [3.02]         | .312 [7.92]         | .285 [7.24]  | .926 [23.52]  | .980 [24.89] | .031 [.79]                       |
| 190540108       | B-237-06X          | 190540109       | B-237-06XT         | 6              | .146 [3.71]         |                     |              |               |              |                                  |
| 190540110       | B-237-08X          | 190540112       | B-237-08XT         | 8              | .173 [4.39]         |                     |              |               |              |                                  |
| 190540113       | B-237-10X          | 190540115       | B-237-10XT         | 10             | .198 [5.03]         |                     |              |               |              |                                  |
| 190540117       | B-239-06X          | ---             | ---                | 6              | .146 [3.71]         | .342 [8.69]         | .310 [7.87]  | .971 [24.66]  | ---          | .031 [.79]                       |
| 190540118       | B-239-08X          | ---             | ---                | 8              | .173 [4.39]         |                     |              |               |              |                                  |
| 190540119       | B-239-10X          | ---             | ---                | 10             | .198 [5.03]         |                     |              |               |              |                                  |



- NOTES:
- MATERIAL:
    - (A). RING TONGUE TERMINAL: COPPER
    - PLATING: ELECTRO-TIN (.0003 MIN.)
    - (B). INSULATION: MOLDED PVC (BLUE)
  - MWID: MAXIMUM WIRE INSULATION DIAMETER
  - WIRE SIZE: 16 -14 AWG  
1.0 -2.5 MM<sup>2</sup>
  - ALL DIMENSIONS IN INCHES/[MM].
  - PARTS ARE ROHS COMPLIANT.
  - DIMS. SHOWN ARE FOR REFERENCE ONLY.

|   |  |                     |  |  |  |                        |  |                          |  |   |  |
|---|--|---------------------|--|--|--|------------------------|--|--------------------------|--|---|--|
| THIS DRAWING CONTAINS INFORMATION THAT IS PROPRIETARY TO MOLEX ELECTRONIC TECHNOLOGIES, LLC AND SHOULD NOT BE USED WITHOUT WRITTEN PERMISSION |  |                     |  |  |  |                        |  |                          |  |   |  |
| DIMENSION UNITS<br><b>INCH/MM</b>   |  | SCALE<br><b>NTS</b> |  | CURRENT REV DESC: OBSOLETE PART NUMBERS<br>AS PER PCN#512131 |  |                        |  | <b>molex</b>             |  | RING TONGUE TERMINAL<br>INSULKRIMP 200-SERIES |  |
| GENERAL TOLERANCES<br>(UNLESS SPECIFIED)  |  |                     |  | EC NO: 727779<br>DRWN: ANIKES1<br>CHK'D: GGA<br>APPR: GGA    |  |                        |  |                          |  |   |  |
| 4 PLACES ±  |  | ±                   |  | 2022/09/30   |  |                        |  | DOCUMENT NUMBER          |  | DOC TYPE   DOC PART   REVISION                |  |
| 3 PLACES ±  |  | ± 0.005             |  | 2022/11/29   |  |                        |  | 190540072                |  | PSD   000   A2                                |  |
| 2 PLACES ±  |  | ± 0.13   ± 0.01     |  | 2022/11/29   |  |                        |  | PRODUCT CUSTOMER DRAWING |  |   |  |
| 1 PLACE ±   |  | ± 0.25   ±          |  | INITIAL REVISION:  |  |                        |  | MATERIAL NUMBER          |  | CUSTOMER                                      |  |
| 0 PLACES ±  |  | ±                   |  | DRWN: KO<br>APPR: JMACNEIL                                   |  |                        |  | 1984/10/25<br>2019/07/01 |  | SHEET NUMBER                                  |  |
| ANGULAR TOL ± 0.5 °   |  |                     |  | DRAFT WHERE APPLICABLE<br>MUST REMAIN<br>WITHIN DIMENSIONS   |  | THIRD ANGLE PROJECTION |  | DRAWING<br><b>C-SIZE</b> |  | SERIES<br><b>19054</b>                        |  |
| DOCUMENT STATUS   |  | P1                  |  | RELEASE DATE   |  | 2022/11/29 12:45:00    |  | SEE TABLE                |  | GENERAL MARKET                                |  |