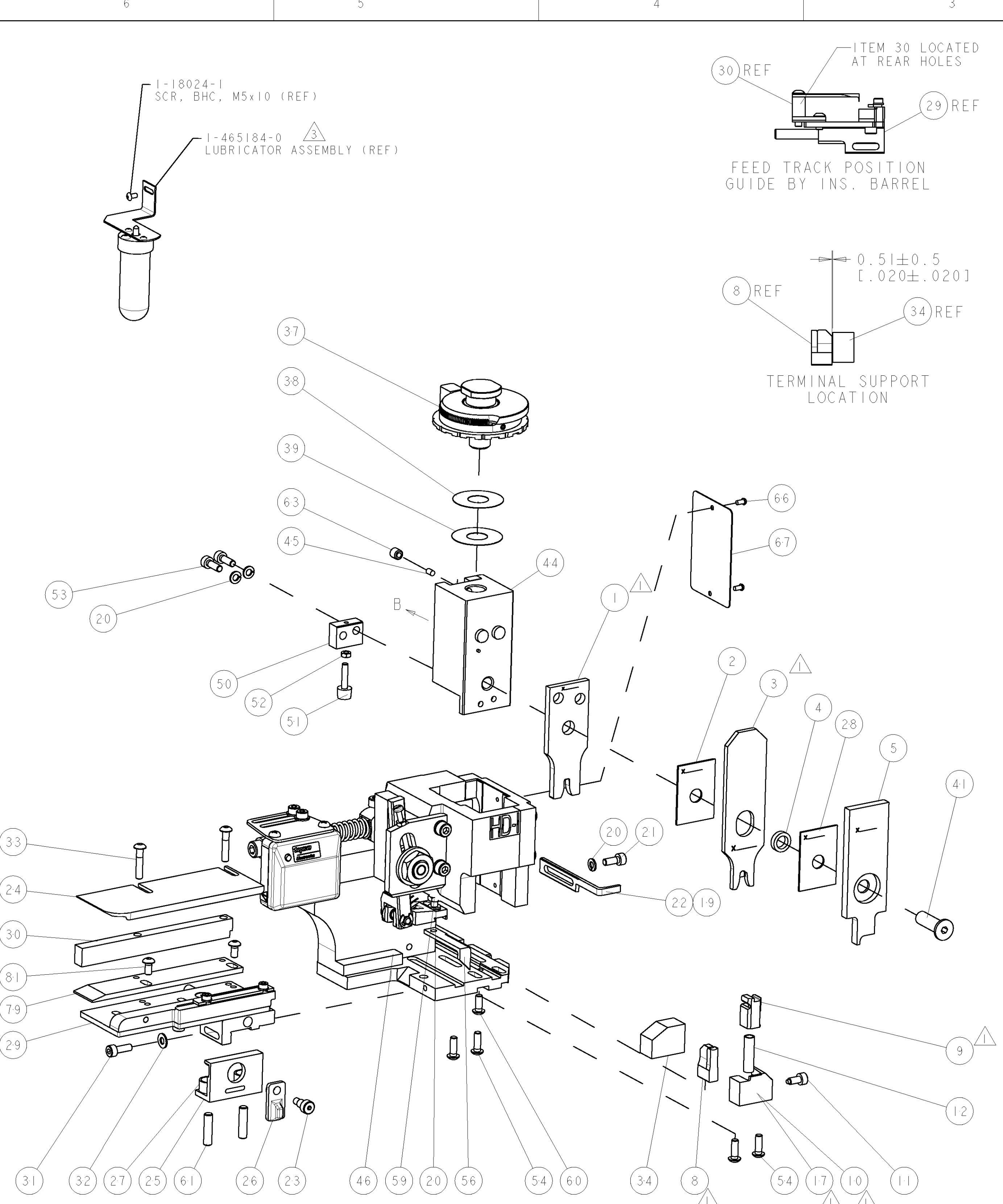
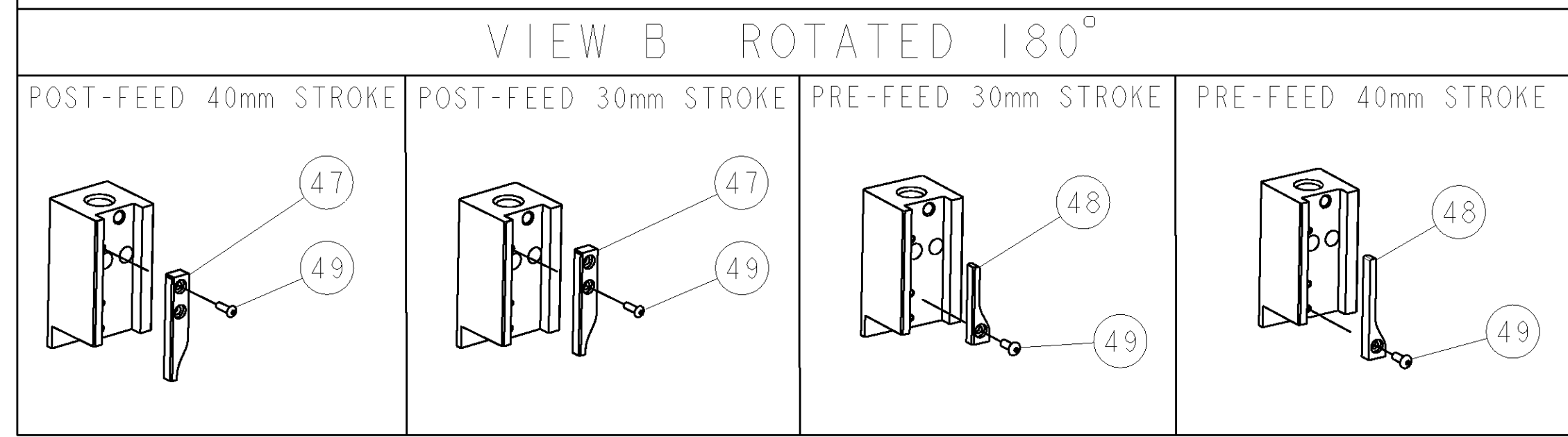


PART NUMBER	REV	TERMINATOR	FEED TYPE	DESCRIPTION
1528856-1	A	LEADMAKER	MECH POST FEED	CUTS CARRIER
1528856-2	A	BENCH	MECH PRE FEED	CUTS CARRIER
1528856-6	A	LEADMAKER	MECH POST FEED	CONTINUOUS CARRIER
7-1528856-1	A	LEADMAKER	MECH POST FEED	-1 AND SPARE PARTS
7-1528856-2	A	BENCH	MECH PRE FEED	-2 AND SPARE PARTS
7-1528856-6	A	LEADMAKER	MECH POST FEED	-6 AND SPARE PARTS
7-1528856-7	A	-	-	SPARE PARTS KIT

CRIMP DATA		TE TERMINAL	TE CRIMP SPECS
TERMINAL NAME: MALE TYPE XII CONTACT			
CRIMP	SIZE	TYPE	RANGE
WIRE	3.56 [1.40 IN]	F	1.50-3.00mm ²
INSUL	5.33 [2.10 IN]	OV	2.55-2.85 [1.00-.112 IN]
WIRE STRIP LENGTH 6.35-7.93 [2.50-.312 IN]		APPL INSTRUCTIONS 408-8322 & 408-8490	
TERMINAL APPL SPEC 114-18022		FEED 21.60 [0.850 IN]	
TERMINALS APPLIED			
66255	-	-	-
66256	-	-	-
66740	-	-	-
164771	-	-	-
164773	-	-	-
WIRE SIZE	CRIMP HEIGHT	REF SETTING	
3.00mm ²	2.54 ± 0.05 [1.00 ± .002 IN]	A 9	
2.50mm ²	2.42 ± 0.05 [0.95 ± .002 IN]	B 8	
1.50mm ²	2.18 ± 0.05 [0.86 ± .002 IN]	D 4	

- △ RECOMMENDED SPARE PARTS.
- 2. GREASE RAM, CAM, CAM FOLLOWER AND FEED ROD LIGHTLY.
- △ CERTAIN TERMINALS REQUIRE LUBRICATION. REFER TO THE APPLICATOR INSTRUCTION SHEET FOR MORE INFORMATION.
- 4. LUBRICATE DAILY PER THE APPLICATOR INSTRUCTION SHEET SUPPLIED WITH THE APPLICATOR.
- △ CRIMP DATA QUOTED IS SUITABLE FOR THE GERMAN MARKET.

*** WARNING**
ON INSTALLATION, SET WIRE DISC TO LARGEST WIRE SIZE SETTING. USE OF SETTINGS BELOW MIN. REQUIRED CRIMP HEIGHT SETTING WILL CAUSE DAMAGE TO CRIMP TOOLING.



LOC	DIST	REV	DESCRIPTION	DATE	BY	APPD
A	66		SEE ECO-07-026134	05NOV2007	LJL	MC

QTY	UNIT	DESCRIPTION	ITEM NO
-	-	-	73
-	-	-	72
-	-	-	71
-	-	-	70
-	-	-	69
-	-	-	68
-	-	-	67
-	-	-	66
-	-	-	65
-	-	-	64
-	-	-	63
-	-	-	62
-	-	-	61
-	-	-	60
-	-	-	59
-	-	-	58
-	-	-	57
-	-	-	56
-	-	-	55
-	-	-	54
-	-	-	53
-	-	-	52
-	-	-	51
-	-	-	50
-	-	-	49
-	-	-	48
-	-	-	47
-	-	-	46
-	-	-	45
-	-	-	44
-	-	-	43
-	-	-	42
-	-	-	41
-	-	-	40
-	-	-	39
-	-	-	38
-	-	-	37
-	-	-	36
-	-	-	35
-	-	-	34
-	-	-	33
-	-	-	32
-	-	-	31
-	-	-	30
-	-	-	29
-	-	-	28
-	-	-	27
-	-	-	26
-	-	-	25
-	-	-	24
-	-	-	23
-	-	-	22
-	-	-	21
-	-	-	20
-	-	-	19
-	-	-	18
-	-	-	17
-	-	-	16
-	-	-	15
-	-	-	14
-	-	-	13
-	-	-	12
-	-	-	11
-	-	-	10
-	-	-	9
-	-	-	8
-	-	-	7
-	-	-	6
-	-	-	5
-	-	-	4
-	-	-	3
-	-	-	2
-	-	-	1

QTY	UNIT	DESCRIPTION	ITEM NO
-	-	-	84
-	-	-	83
-	-	-	82
-	-	-	81
-	-	-	80
-	-	-	79
-	-	-	78
-	-	-	77
-	-	-	76
-	-	-	75
-	-	-	74
-	-	-	73
-	-	-	72
-	-	-	71
-	-	-	70
-	-	-	69
-	-	-	68
-	-	-	67
-	-	-	66
-	-	-	65
-	-	-	64
-	-	-	63
-	-	-	62
-	-	-	61
-	-	-	60
-	-	-	59
-	-	-	58
-	-	-	57
-	-	-	56
-	-	-	55
-	-	-	54
-	-	-	53
-	-	-	52
-	-	-	51
-	-	-	50
-	-	-	49
-	-	-	48
-	-	-	47
-	-	-	46
-	-	-	45
-	-	-	44
-	-	-	43
-	-	-	42
-	-	-	41
-	-	-	40
-	-	-	39
-	-	-	38
-	-	-	37
-	-	-	36
-	-	-	35
-	-	-	34
-	-	-	33
-	-	-	32
-	-	-	31
-	-	-	30
-	-	-	29
-	-	-	28
-	-	-	27
-	-	-	26
-	-	-	25
-	-	-	24
-	-	-	23
-	-	-	22
-	-	-	21
-	-	-	20
-	-	-	19
-	-	-	18
-	-	-	17
-	-	-	16
-	-	-	15
-	-	-	14
-	-	-	13
-	-	-	12
-	-	-	11
-	-	-	10
-	-	-	9
-	-	-	8
-	-	-	7
-	-	-	6
-	-	-	5
-	-	-	4
-	-	-	3
-	-	-	2
-	-	-	1

DIMENSIONS: mm [IN]	TOLERANCES UNLESS OTHERWISE SPECIFIED: 0 PLC ± 1 PLC ± 2 PLC ± 3 PLC ± 4 PLC ± ANGLES ±	DWG: JL LOFTHOUSE CHK: M. CLIFFORD APVD: M. CLIFFORD PRODUCT SPEC: See Table APPLICATION SPEC: See Table WEIGHT: A1 CUSTOMER DRAWING:	Tyco Electronics Harrisburg, PA 17105-3608 FINE ADJUST SIDE FEED HDI APPLICATOR SCALE: 3:5 SHEET: 1 OF 1 REV: A
------------------------	---	---	--