

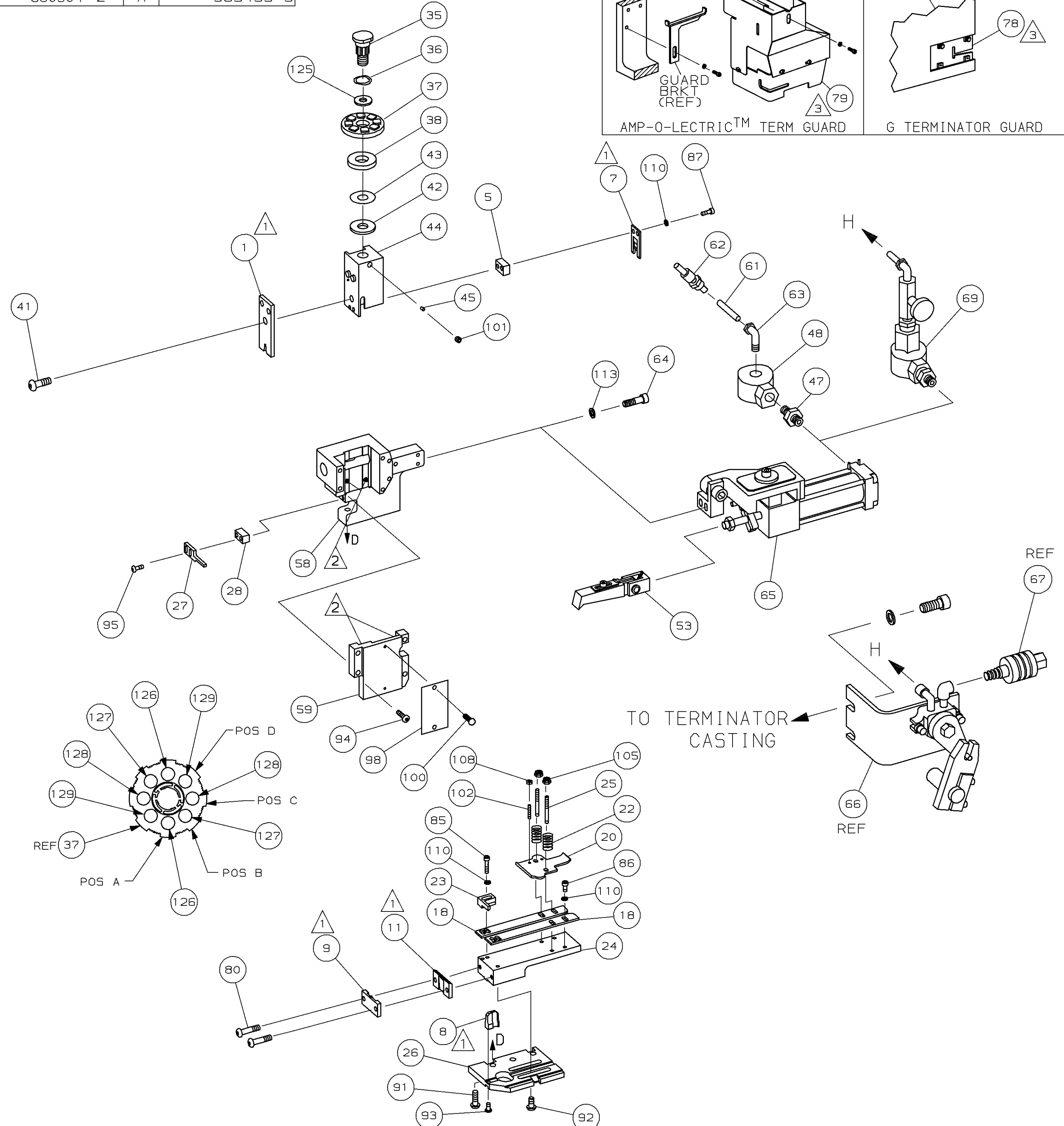
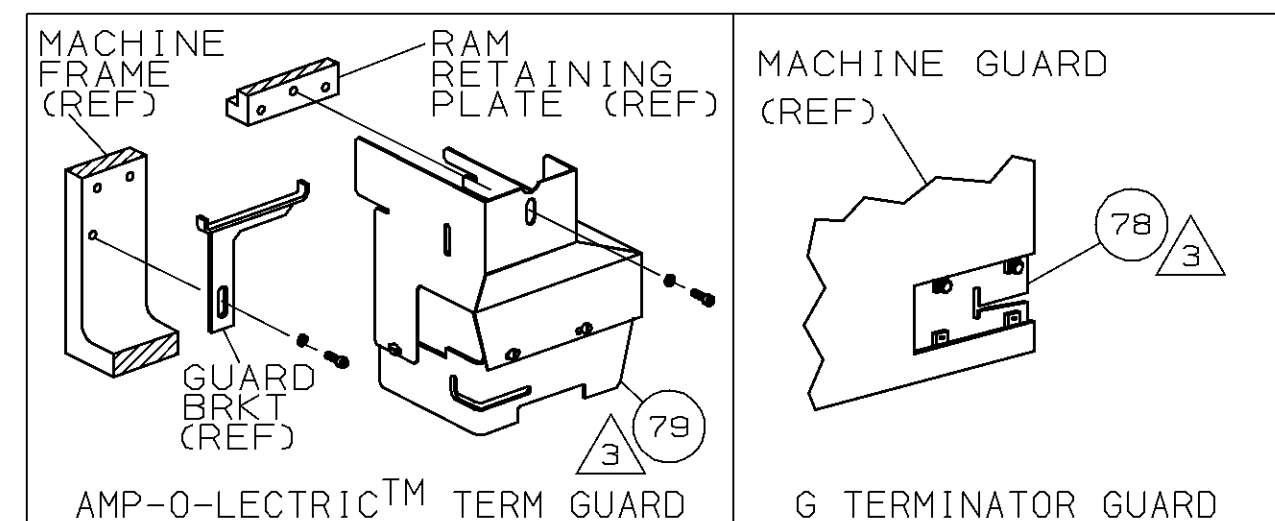
THIS DRAWING IS A CONTROLLED DOCUMENT.

PART NUMBER	REV	FIRST USED
680304-1	A	122500-1
680304-2	A	565435-5

680304

680304

/home/amp07567



- 1 RECOMMENDED SPARE PARTS.
- 2 GREASE LIGHTLY.
- 3 GUARD MUST BE IN PLACE WHEN OPERATING APPLICATOR IN A BENCH MACHINE.
- 4 SEE DRAWING FOR COMPONENTS
- 5 SUBSTITUTE FEED MOUNT BRACKET 459610-3 AT ASSY

PAD LTR		CRIMP HEIGHT		WIRE SIZE	
A	1217021	.126 ± .002 [3.20 ± 0.05mm]		#8	
B		.117 ± .002 [2.97 ± 0.05mm]		(4) #14 1/2	
C		.112 ± .002 [2.84 ± 0.05mm]		(2) #12	
D		.104 ± .002 [2.64 ± 0.05mm]		#10	

WIRE STRIP LENGTH	TERM APPL SPEC	FEED	APPL INSTRUCTION	SET UP GAGE	LAYOUT
-	NONE	.845	408-8039	458638-1	L1765

QTY	2	2	-	C	9-354778-1	PIN, WIRE DISC (.2950)D	129
					7-354778-5	PIN, WIRE DISC (.2870)C	128
					6-354778-1	PIN, WIRE DISC (.2800)B	127
					4-354778-3	PIN, WIRE DISC (.2710)A	126
					986950-1	WASHER, FLAT PRECISION	125
					217238-1	GENERAL INSTRUCTION PACKAGE	124
					4088039	EF APPL INST 408-8039	123
							122
							121
							120
							119
							118
							117
							116
							115
							114
	2	2	-	A	21024-5	WASHER, LOCK (#10) AIR ASSY	113
							112
							111
	7	7	-	A	21024-4	WASHER, LOCK (NO. 8) SHEAR BL	110
							109
	2	2	-	A	21018-4	NUT, HEX (4-40) DRAG	108
							107
							106
	2	2	-	A	21022-2	NUT, HEX SL (8-32) DRAG STUD	105
							104
							103
	2	2	-	A	2-21006-6	SCR, SKT SET (4-40x.62) DRAG	102
	1	1	-	A	21009-2	SCR, SKT SET (1/4-20x.25) RAM	101
	2	2	-	A	21017-2	SCR, DRIVE (#2x.19) ID PLATE	100
							99
	1	1	-	B	461264-1	PLATE, IDENTIFICATION	98
							97
							96
	2	2	-	A	2-21002-2	SCR, BHC (8-32x.50) STRIPPER	95
	4	4	-	A	2-21002-9	SCR, BHC (10-32x.75) CAP	94
	1	1	-	A	22733-8	SCR, BHC (8-32x.38 LW) ANVIL	93
	4	4	-	A	3-21002-3	SCR, BHC (1/4-20x.50) ST GD PL	92
	3	3	-	A	2-22733-8	SCR, BHC (1/4-20x.62) HSG	91
							90
							89
							88
	2	2	-	A	2-21000-7	SCR, SHC (8-32x.50) SLUG BLADE	87
	3	3	-	A	2-21000-6	SCR, SHC (8-32x.38) STRIP GUIDE	86
	2	2	-	A	2-21000-9	SCR, SHC (8-32x.75) R STRIP GUIDE	85
							84
							83
							82
							81
	2	2	-	A	3-21002-0	SCR, BHC (10-32x.88) SHEAR PL	80
	1	-	-	A	455750-8	GUARD ASSY	79
	-	REF	-	A	679532-1	INSERT, GUARD	78
							77
							76
							75
							74
							73
							72
							71

QTY	1	1	- <th>C</th> <th>692655-5</th> <th>AIR FEED VALVE ASSY</th> <th>70</th>	C	692655-5	AIR FEED VALVE ASSY	70
							69
							68
	REF	-	-	A	24042-2	VALVE, SHUT OFF	67
	REF	-	-	C	692655-6	AIR FEED VALVE ASSY	66
	1	1	-	B	460277-1	AIR FEED ASSY (1 INCH)	65
	2	2	-	A	3-21000-9	SCR, SHC (10-32x1.00) AIR ASSY	64
	-	1	-	A	983427-6	ELBOW, SWIVEL 1/8 NPT - 1/4 T	63
	-	1	-	A	23238-1	QUICK DISCONNECT	62
	-	12.00	IN	A	27319-4	TUBING, POLY-FLO Ø.25	61
							60
	1	1	-	C	454220-1	CAP, RAM	59
	1	1	-	D	453736-1	HOUSING	58
							57
							56
							55
							54
	1	1	-	B	460680-2	FEED FINGER ASSY	53
							52
							51
							50
							49
	-	1	-	A	22374-7	VALVE, QUICK EXHAUST	48
	-	1	-	A	22304-1	NIPPLE, HEX 1/8 NPT	47
							46
	1	1	-	A	690191-1	PLUG, NYLON	45
	1	1	-	C	455674-1	RAM	44
	1	1	-	A	690125-1	WASHER, LAMINATED	43
	1	1	-	A	690124-4	WASHER, RAM	42
	1	1	-	A	7-21002-9	BOLT, CRIMPER (5/16-24x1.00)	41
							40
							39
	1	1	-	A	690223-2	SPACER, INSULATION DISC	38
	1	1	-	D	354777-1	WIRE DISC, PLASTIC	37
	1	1	-	A	22480-5	WASHER, SPRING	36
	1	1	-	B	690212-1	POST, RAM	35
							34
							33
							32
							31
							30
							29
	1	1	-	B	3-690451-2	SPACER, STRIPPER	28
	1	1	-	A	240639-1	STRIPPER	27
	1	1	-	D	455676-1	PLATE, BASE	26
	2	2	-	A	22354-8	DRAG, STUD	25
	1	1	-	B	455678-1	PLATE, STRIP GUIDE	24
	1	1	-	C	240825-8	PLATE, STRIP HOLD DOWN	23
	2	2	-	A	4-22281-1	SPRING, DRAG	22
							21
	1	1	-	A	454177-1	DRAG, STOCK	20
							19
	2	2	-	C	454204-4	GUIDE, STRIP (FRONT)	18
							17
							16
							15
							14
							13
							12
	1	1	-	B	240644-1	PLATE, REAR SHEAR	11
							10
	1	1	-	B	690495-3	PLATE, FRONT SHEAR	9
	1	1	-	D	7-240654-2	ANVIL	8
	1	1	-	B	690474-5	BLADE, SLUG	7
							6
	1	1	-	C	1-240641-2	SPACER, SLUG BLADE	5
							4
							3
							2
	1	1	-	C	1-456428-0	CRIMPER, WIRE	1

JUL 6, 1998
RELEASED FOR PUBLICATION
BY AMP INCORPORATED. ALL RIGHTS RESERVED.
THIS DRAWING IS UNPUBLISHED.
COPYRIGHT 1998

LOC A
DIST 66

QTY REQD PER ASSY	2	1	U/M	DWG SIZE	PART NO	DESCRIPTION	ITEM NO
PARTS LIST							

QTY REQD PER ASSY	2	1	U/M	DWG SIZE	PART NO	DESCRIPTION	ITEM NO
REVISION OF EACH ASSY NO (WHEN BLANK, USE DWG REVISION)							

DIMENSIONS IN INCHES. DO NOT SCALE PRINT. TOLERANCES UNLESS OTHERWISE SPECIFIED.		MATL		HT TR		FIN	
2 PLC DEC ± .25		DR J.BAKER 4/24/96		APP T.ELBIN 4/24/96		AMP Incorporated Harrisburg, PA 17105-3608	
3 PLC DEC ± .		CHK 4/24/96		REL 6/10/96		NAME	
4 PLC DEC ± .		C.ERISMAN		B. MORGAN		END FEED HDM APPLICATOR MACHINE REF MINI APPL	
ANGLES ± . SURF TEXTURE: ✓ REMOVE BURRS, BREAK SHARP EDGES R.015 MAX		SCALE		DWG NO 680304		SHEET 1 OF 1 REV A2	