

28GHz 2-way Wilkinson Power Divider

PDW07630

DESCRIPTION

DLI's 28GHz 2-way power divider / combiner offers unmatched size and performance in a surface mount configuration. This power divider utilizes DLI's low loss temperature stable materials which offer small size and minimal performance variation over temperature.

FEATURES

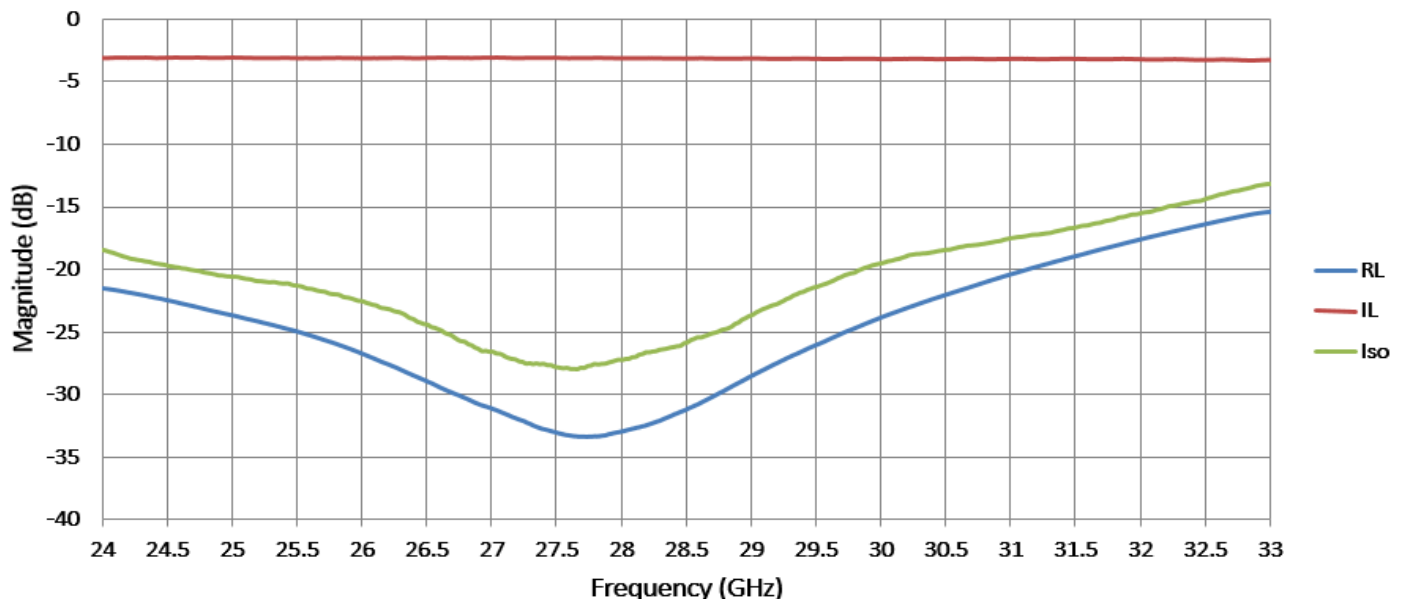
- Small Size
- Solder Surface Mount Package
- Moisture Sensitivity Level: MSL1
- Frequency Stable over Temperature
- Operating & Storage Temp: -55°C to +125°C
- Characteristic Impedance: 50Ω
- Excellent Repeatability

SPECIFICATIONS*

Parameter	Frequency (GHz)	Min	Typ.	Max
Nominal Power Splitting (dB) (excess)	24–32		0.25	0.5
Nominal Phase Shift (Deg)			0.0	
Amplitude Balance (dB)				± .25
Phase Balance (Deg)				± 5.0
Excess Insertion Loss (dB)				0.7
Return Loss (dB)		15	20	
Isolation (dB)		14	15	
Input Power				TBD

*Electrical specifications based on typical mounted performance at room temperature. Insertion loss shall vary ±0.5dB over temperature.

Typical Measured Performance

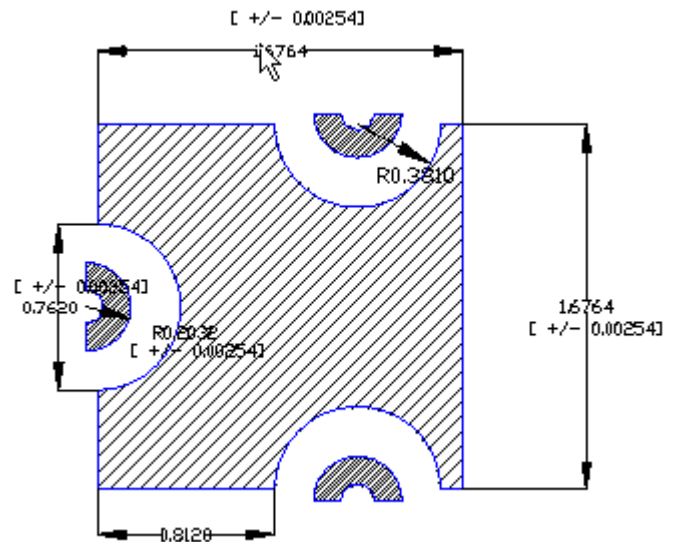
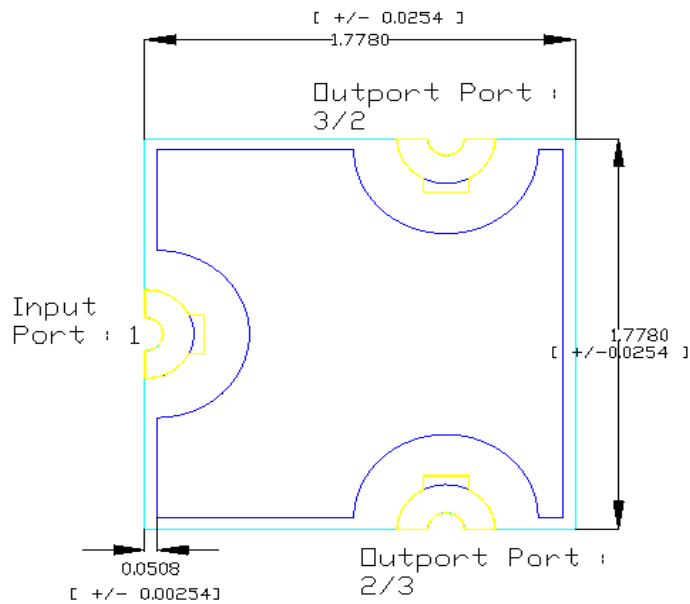


28GHz 2-way Wilkinson Power Divider

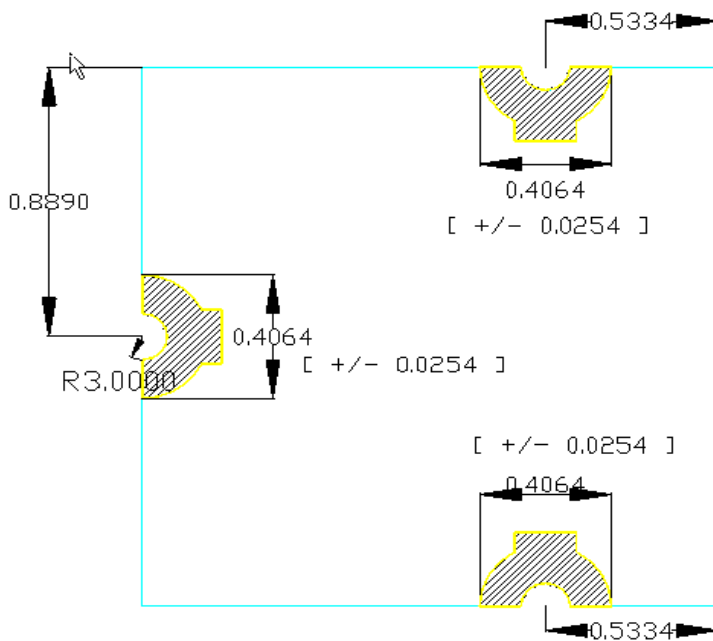
PDW07630

Physical Dimensions

Units = mm [+/- tolerance]

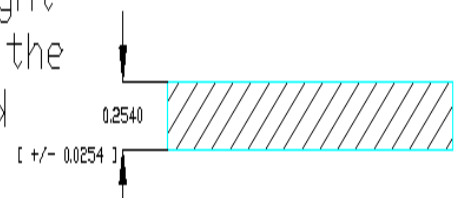


Bottom View: Grounding Layer



Top View : I/O ports

The Height includes the Top and Bottom metalization

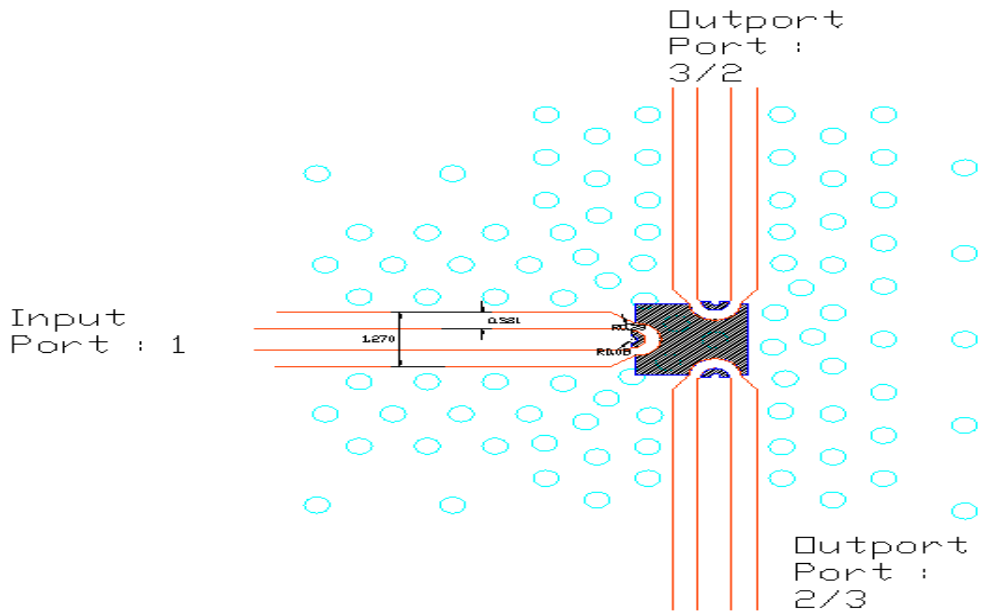
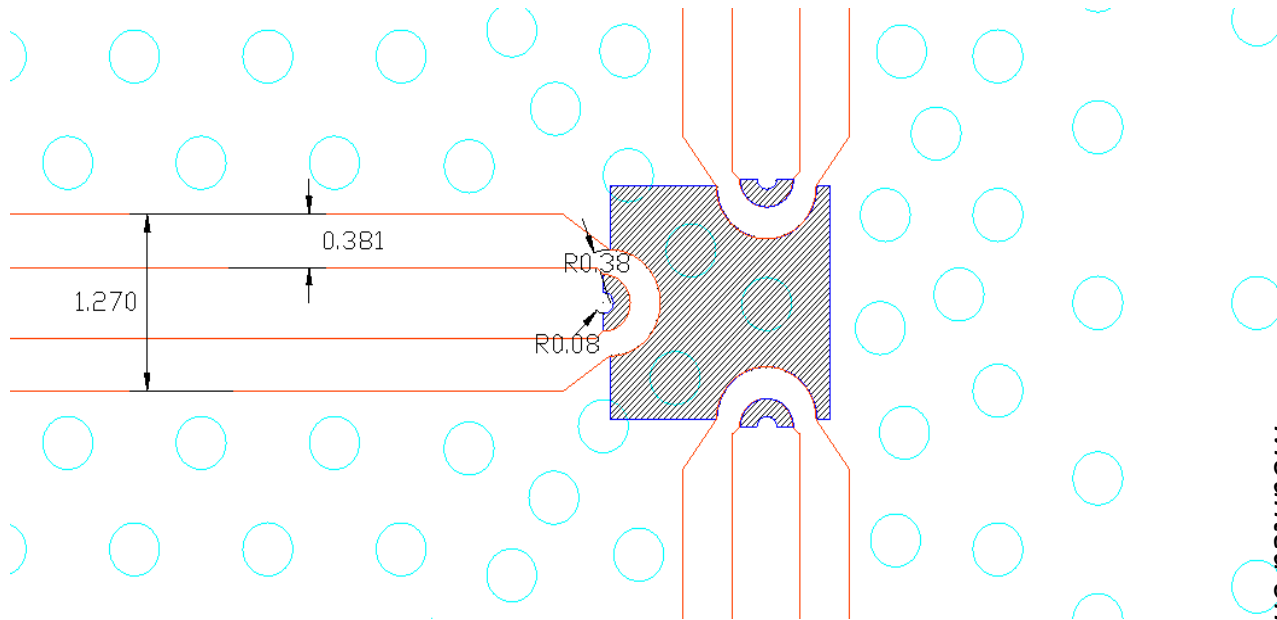


Side View : Substrate

28GHz 2-way Wilkinson Power Divider

PDW07630

Recommended PCB Layout



Mounted on 10.0 mils Roger Board RO4350B

- 50Ω trace dimensions are application specific.
- Ensure adequate grounding beneath the part.

